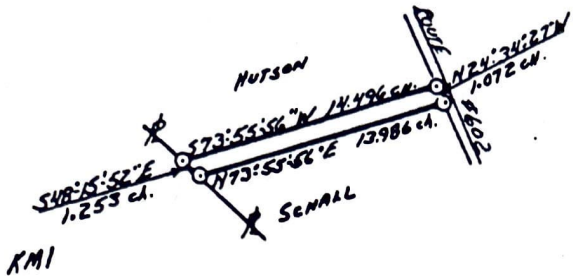
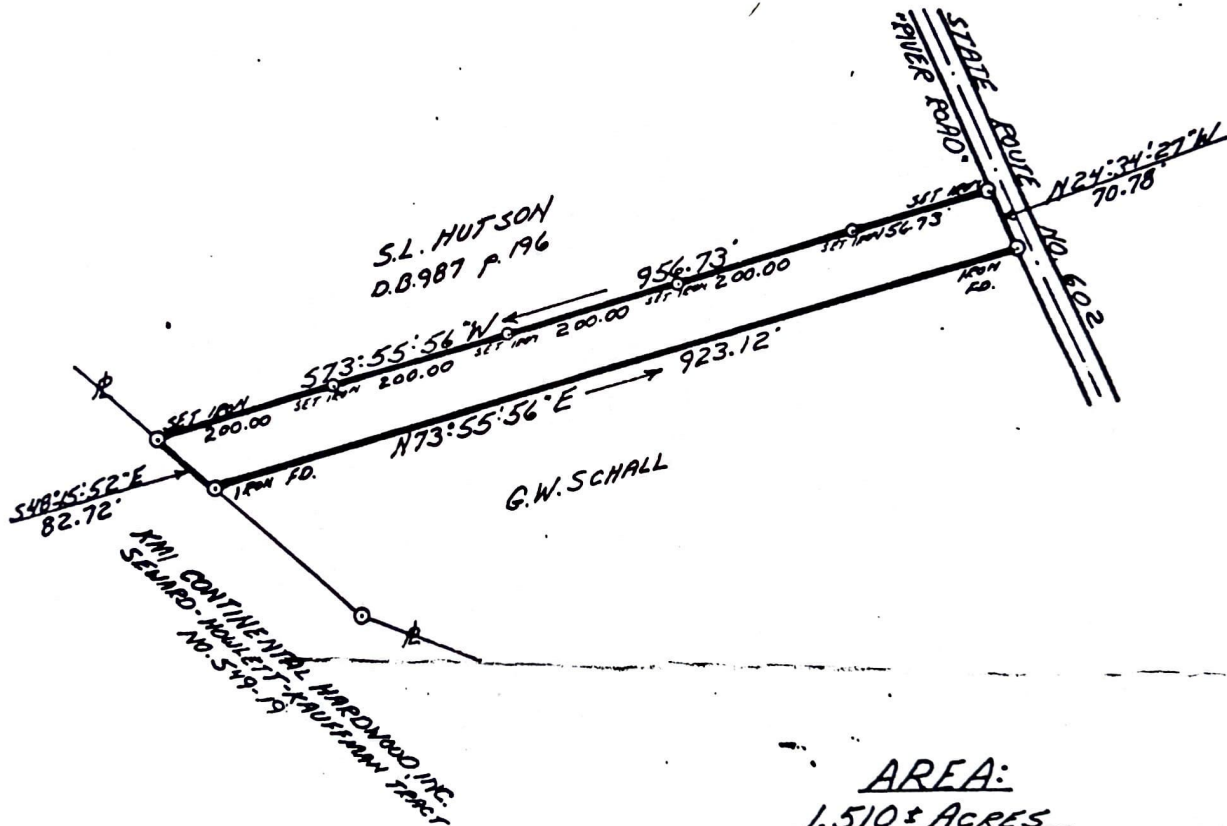


INSERT

SCALE: 1" = 10 CHAINS = 660'



BOOK 1828 PAGE 581



AREA:  
1.510 ± ACRES

**MAP**  
 SHOWING A STRIP OF LAND  
 SITUATED MATOACA DISTRICT  
 CHESTERFIELD COUNTY, VIRGINIA  
 OWNED BY  
 SIDNEY L. & RUBY T. HUTSON  
 SURVEYED FOR  
**KMI CONTINENTAL HARDWOOD, INC.**  
 SCALE: 1" = 200'  
 JERRY H. PATCHETT, III  
 DANVILLE, VIRGINIA  
 Nov. 4, 1986