



LOTS FOR SALE 1.16-11.47 ACRES

Stone City Commercial Center

JOLIET, ILLINOIS 60436

PROPERTY HIGHLIGHTS

- For sale/build to suit
- Lot sizes from 1.16-11.47 acres
- Lots can be combined to form 4.68 and 5.45 acres
- B-3 zoning
- Annexed to the City of Joliet
- All utilities at site
- Traffic light at IL Route 53 and Laraway Road intersection
- 2.29+ miles from I-80 interchange
- Master storm-water detention off-site
- Full access point at Stone City Drive bisects site
- 22,300 VPD
- 6,250 trucks per day

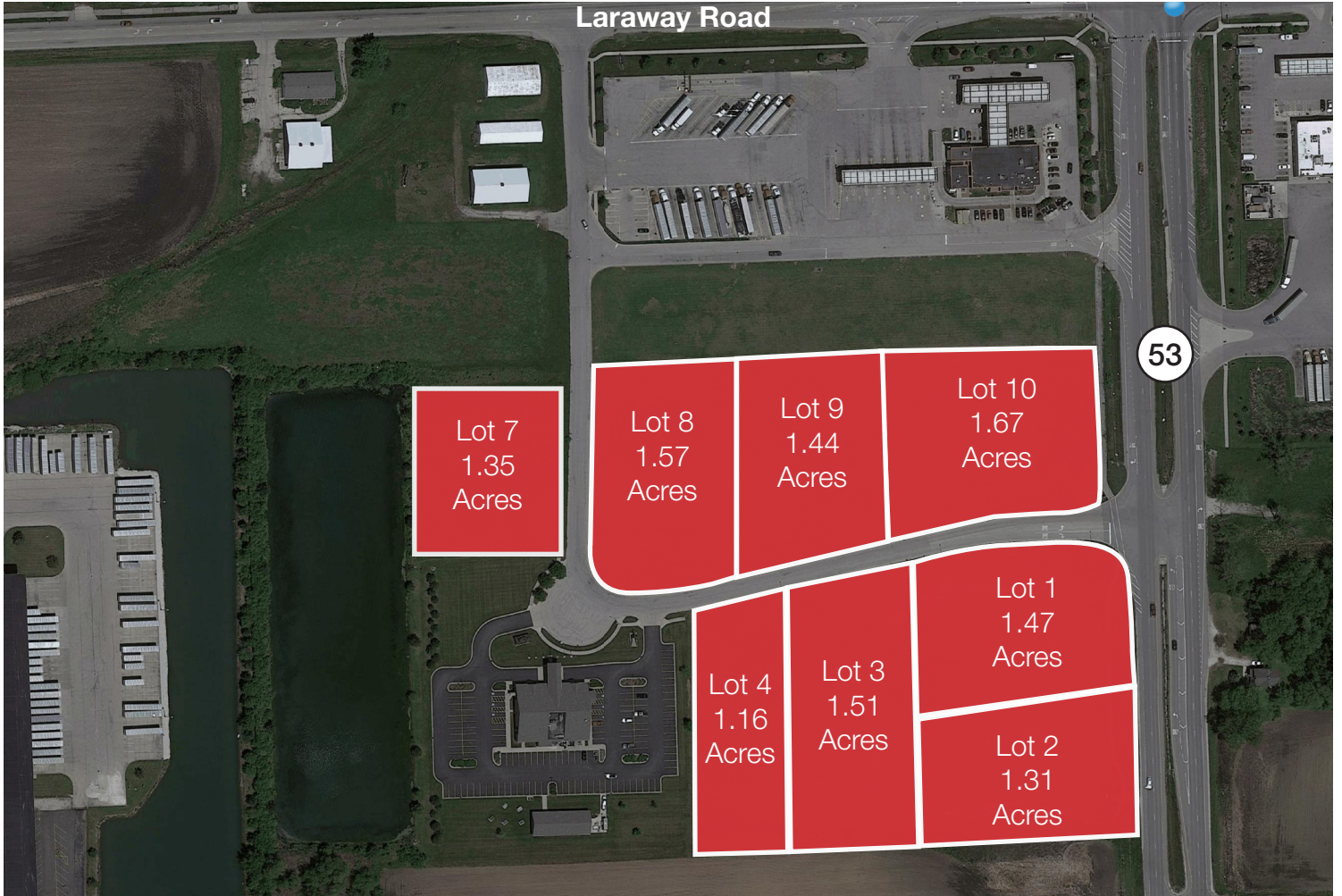
Dan Hiffman
630 693 0655
dan@hiffman.com

Dennis Hiffman
312 505 3555
dhiffman@hiffman.com

LOTS FOR SALE 1.16-11.47 ACRES

Stone City Commercial Center

JOLIET, ILLINOIS 60436



LOT #	SIZE
1	1.47 acres
2	1.31 acres
3	1.51 acres
4	1.16 acres
7	1.35 acres
8	1.57 acres
9	1.44 acres
10	1.67 acres

LOTS FOR SALE 1.16-11.47 ACRES

Stone City Commercial Center

JOLIET, ILLINOIS 60436



Dan Hiffman

630 693 0655
dan@hiffman.com

Dennis Hiffman

312 505 3555
dhiffman@hiffman.com

NAI Hiffman
Commercial Real Estate Services, Worldwide

ONE OAKBROOK TERRACE, SUITE 400
OAKBROOK, TERRACE IL 60181
630 932 1234

HIFFMAN.COM
@NAIHIFFMAN