



# 565 Lakeview Parkway

Vernon Hills, Illinois 60061

One Oakbrook Terrace  
Suite 400  
Oakbrook Terrace, Illinois 60181  
+1 630 932 1234

[hiffman.com](http://hiffman.com)

Single-story, 86,122 SF building situated on beautifully landscaped grounds.



GENERAL OFFICE & MEDICAL SPACE



FLEXIBLE PARKING

## Contact

Jason Wurtz  
+1 630 693 0692  
[jwurtz@hiffman.com](mailto:jwurtz@hiffman.com)

Sarah Walker  
+1 630 389 8911  
[swalker@hiffman.com](mailto:swalker@hiffman.com)

Steve Chrastka  
+1 630 317 0746  
[schrastka@hiffman.com](mailto:schrastka@hiffman.com)



LOCAL OWNERSHIP & MANAGEMENT



QUICK ACCESS TO I-94 VIA ROUTE 60 & ROUTE 21



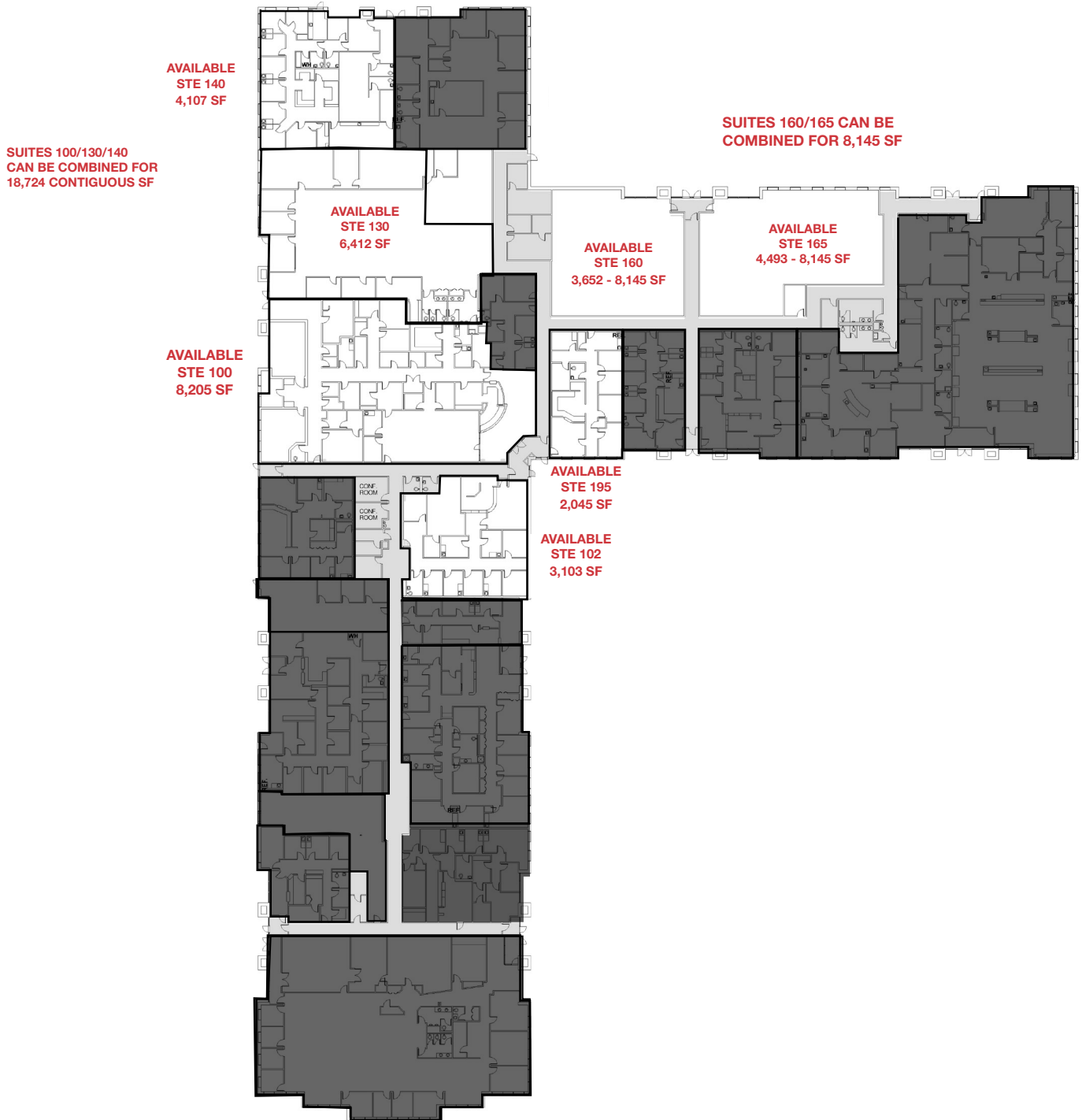
2,045 - 18,724 SF AVAILABLE



LOCATION NEAR SHOPPING, RESTAURANTS & JOGGING TRAIL

NO WARRANTY OR REPRESENTATION, EXPRESS OR IMPLIED, IS MADE AS TO THE ACCURACY OF THE INFORMATION CONTAINED HEREIN, AND THE SAME IS SUBMITTED SUBJECT TO ERRORS, OMISSIONS, CHANGE OF PRICE, RENTAL OR OTHER CONDITIONS, PRIOR SALE, LEASE OR FINANCING, OR WITHDRAWAL WITHOUT NOTICE, AND OF ANY SPECIAL LISTING CONDITIONS IMPOSED BY OUR PRINCIPALS. NO WARRANTIES OR REPRESENTATIONS ARE MADE AS TO THE CONDITION OF THE PROPERTY OR ANY HAZARDS CONTAINED THEREIN ARE ANY TO BE IMPLIED.





Continental Executive Parke is a 86,122 SF single-story office building. The property is well suited for both general office use and medical use. Tenants and guests enjoy the convenient parking, professionally landscaped grounds, and recently renovated interior common areas, which include bright and comfortable seating areas for tenant breaks / gatherings. Nearby retail, namely the Westfield Hawthorn Mall, is not only an amenity to tenants but as a primary economic driver for Vernon Hills, it spurs a strong daytime population and continued area development.



## Contact

Jason Wurtz

+1 630 693 0692

[jwurtz@hiffman.com](mailto:jwurtz@hiffman.com)

Steve Chrastka

+1 630 317 0746

[schrastka@hiffman.com](mailto:schrastka@hiffman.com)

Sarah Walker

+1 630 389 8911

[swalker@hiffman.com](mailto:swalker@hiffman.com)

**NAI**Hiffman

One Oakbrook Terrace  
Suite 400  
Oakbrook Terrace, Illinois 60181  
+1 630 932 1234

[hiffman.com](http://hiffman.com)