

FOR SALE

INDUSTRIAL

CLASS B



## 6785 PROSPER CIRCLE

Edmond, Oklahoma 73034

**\$900,000** OWNER USER | INVESTMENT

**7,000 SF**  
AVAILABLE SF

**0.58 AC**  
LAND AREA

**1,000 SF**  
OFFICE SF

**16 FT**  
CLEAR HEIGHT

**2 OH 14x12**  
GRADE LEVEL DOORS

**2022**  
YEAR BUILT

### PROPERTY HIGHLIGHTS

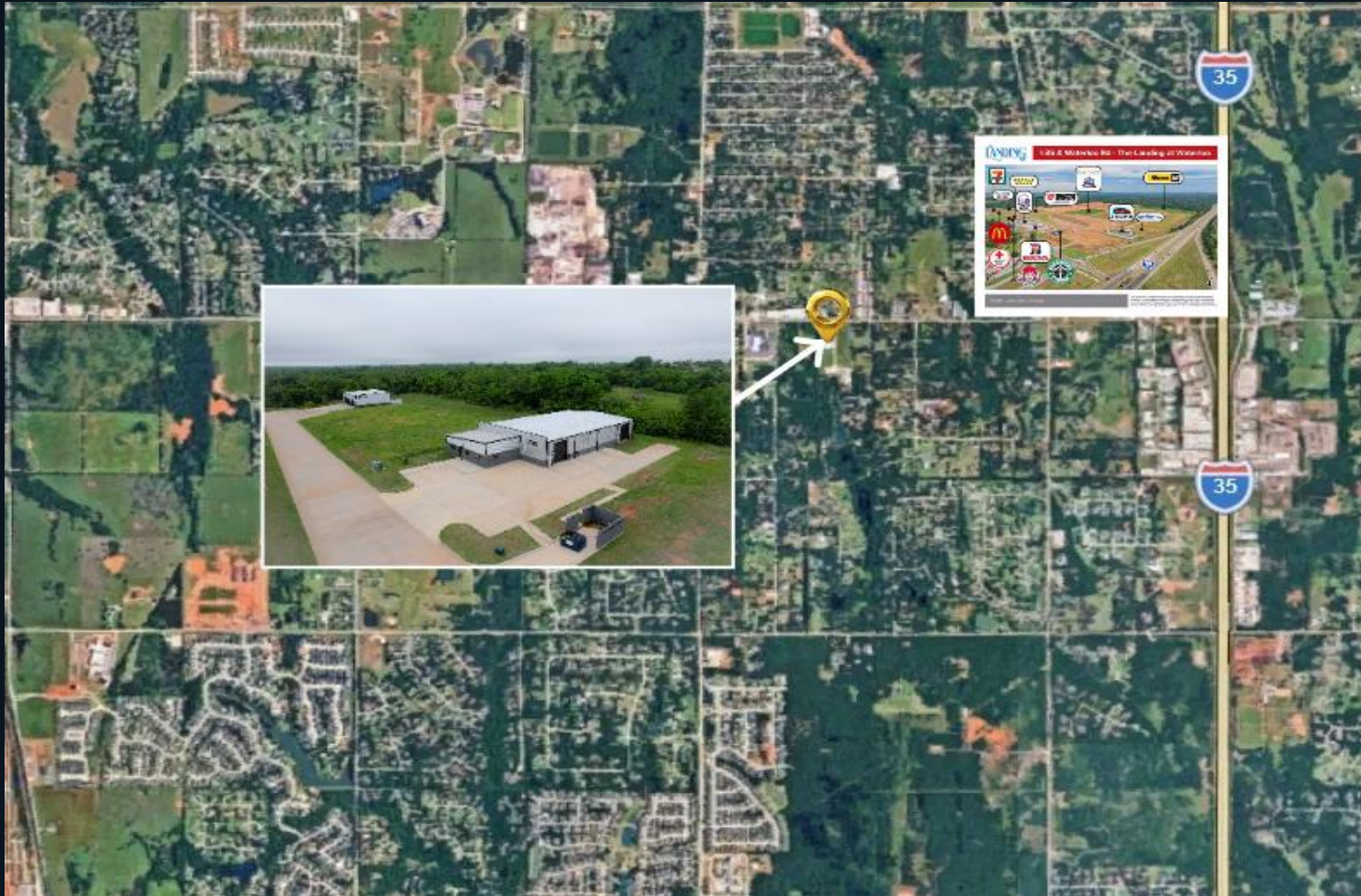
New flex industrial park in NE Edmond · Off Waterloo between I-35 & Oak Tree · SW of the The Landing — Edmond's newest retail corridor · Easy I-35 access



### CONTACT

**Tom H. Vaught, SIOR**

tom@victorycre.com · C: 405.850.6556



## ABOUT THE PROPERTY

Prosper Park is a new flex industrial park in Northeast Edmond, conveniently located off Waterloo Road between I-35 and the prestigious Oak Tree Neighborhood.

## KEY LOCATION ADVANTAGES

### Easy I-35 Access

Direct connectivity to Oklahoma's major north-south corridor

### Off Waterloo Road

Centrally located in high-growth Northeast Edmond

### SW of the The Landing

Edmond's newest premier retail & dining destination

### Near Oak Tree Neighborhood

Prestigious area — ideal for professional image

## CONTACT

**Tom H. Vaught, SIOR**

[tom@victorycre.com](mailto:tom@victorycre.com) · C: 405.850.6556