

**SITE KEYPLAN**

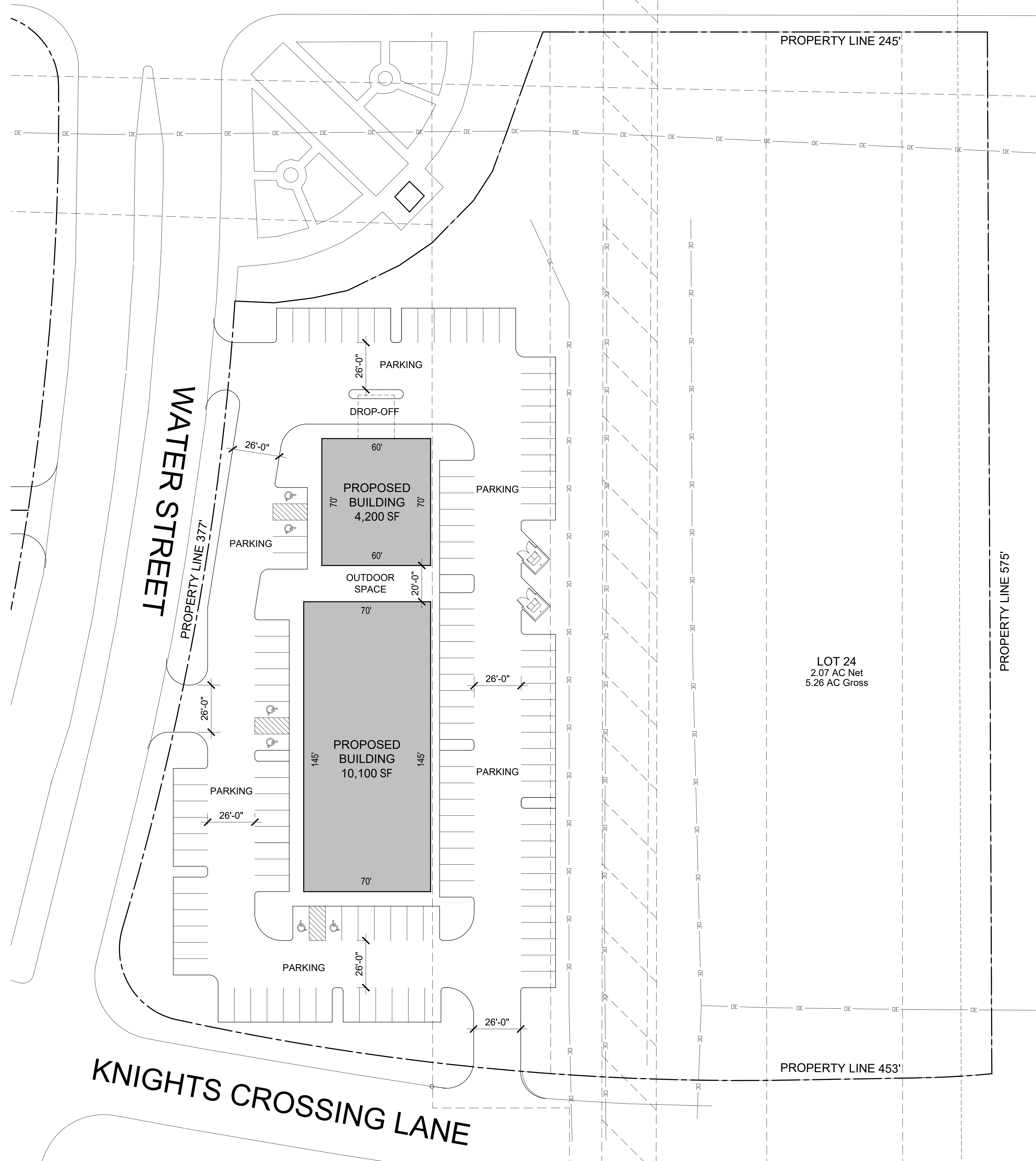
**WEBSTER PARKING REQUIREMENTS**

OFFICE: 1 PER 250 SF  
 RETAIL: 1 PER 250 SF  
 MEDICAL OFFICE: 1 PER 225 SF

GROSS BUILDING AREA = 14,300 SF  
 14,300 SF (MEDICAL) / 225 = 64 SPACES

PARKING REQUIRED: 64  
 PARKING PROVIDED: 122

ACCESSIBLE PARKING REQUIRED: 5  
 ACCESSIBLE PARKING PROVIDED: 6



LOT 24  
 2.07 AC Net  
 5.26 AC Gross

**KNIGHTS CROSSING LANE**



**PROPOSED 5K & 10K BUILDINGS**  
 NASA BYPASS BUSINESS PARK  
 WATER STREET (RESERVE B), WEBSTER TX

Written dimensions on these drawings shall have precedence over scale dimensions. Sub Contractors shall verify and be responsible for all dimensions and conditions on the job and this office must be notified of any variation from the dimensions and conditions shown on these drawings.  
 Copyright 2022 Wycoff Development and Construction, LLC. Drawings & Specifications as instruments of service are and shall remain the property of Wycoff Development and Construction, LLC. They are not to be used on other projects or extensions of this project except by agreement in writing and with appropriate compensation.

SCHEMATIC DESIGN  
 SITE PLAN