

# SHERWOOD COMMONS

17565 & 17625 SW HANDLEY ST | SHERWOOD | OR 97140



**NEW CLASS A+ MEDICAL BUILDINGS**



**BARRINGTON  
MANAGEMENT**

**DAVID EMAMI**  
503.557.3350  
[bm@barringtonpdx.com](mailto:bm@barringtonpdx.com)

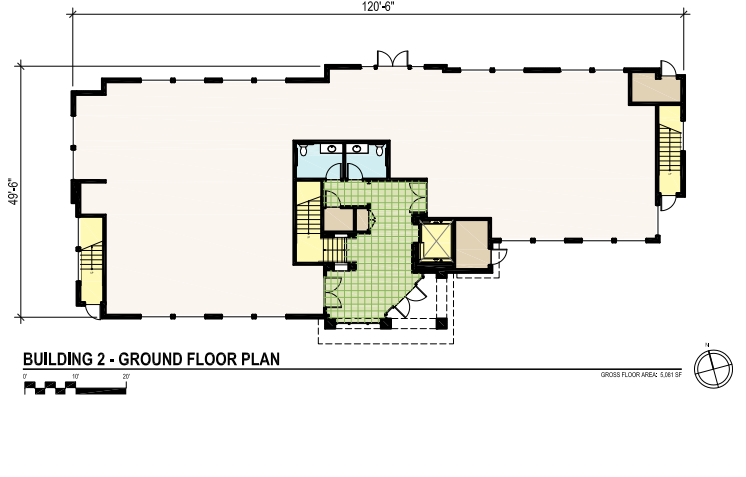
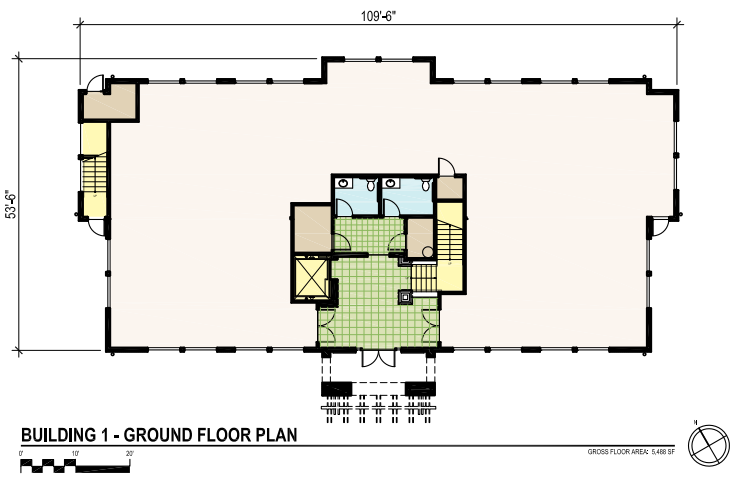
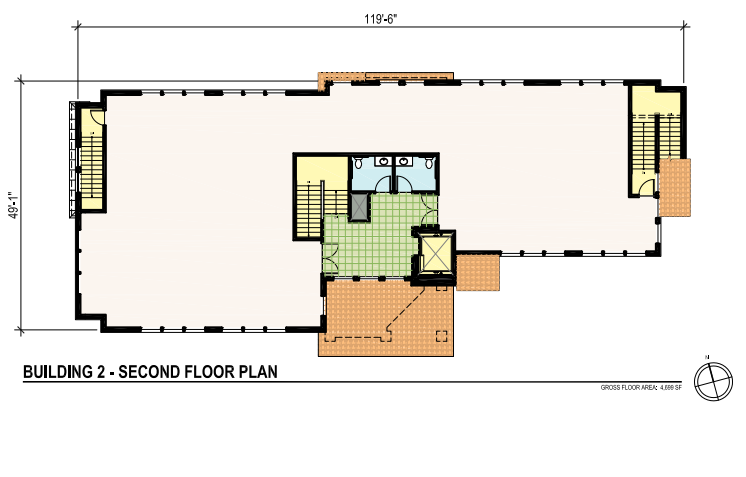
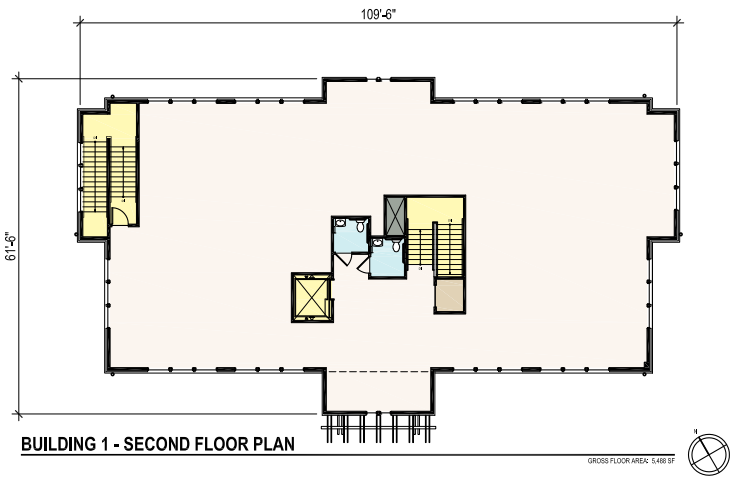
The information contained herein has been obtained from sources deemed reliable, however we do not guarantee its accuracy.



### **Two New Class A+ Medical Buildings**

- 20,000 sq. ft. (10,000 each)
- Established medical area
- Free on site parking - 5/1000
- Bike parking
- Elevator served
- Great signage opportunity
- 99-W frontage
- Bus line in front
- Intersection with a stop light
- Mitsubishi CITY MULTI HVAC system
- ADA compliant





# SHERWOOD COMMONS

17565 & 17625 SW HANDLEY ST | SHERWOOD | OR 97140



## Demographics

	1 mile	3 miles	5 miles
Total Population 2000	6,184	14,711	59,265
Total Population 2010	10,947	21,493	77,746
Avg. HH Income	91,726	89,781	89,041



**DAVID EMAMI**  
503.557.3350  
bm@barringtonpdx.com

The information contained herein has been obtained from sources deemed reliable, however we do not guarantee its accuracy.