



FOR LEASE 7,215 SF

INSPACE AT OAKLAND PARK

3750 NE 4th Avenue
Oakland Park, FL 33334



INSPACE AT OAKLAND PARK

3750 NE 4th Avenue

Property Features

Space Available: 7,215 SF

Office Space: ±661 SF

Clear Height: 18'

Doors: 4 Dock High Doors

Loading Configuration: Cross Dock

Column Spacing: 40 ft

Restrooms: 2

Truck Court: Shared

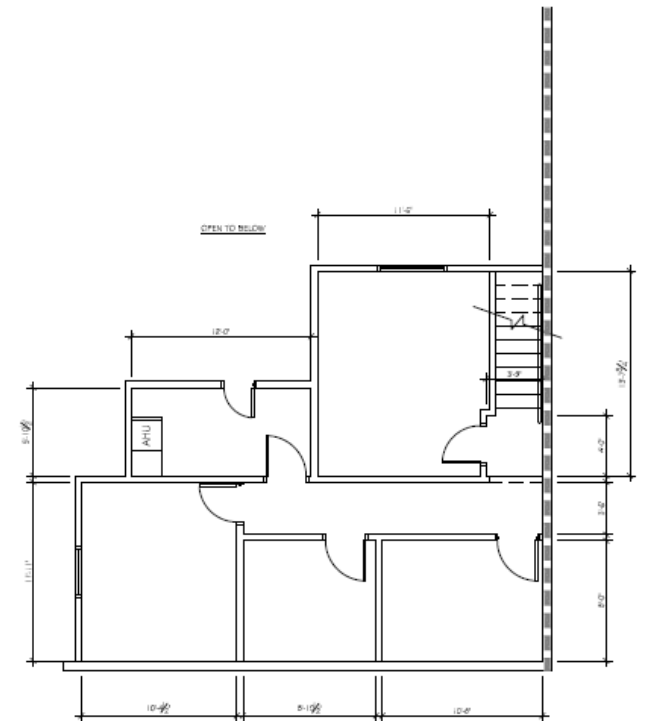
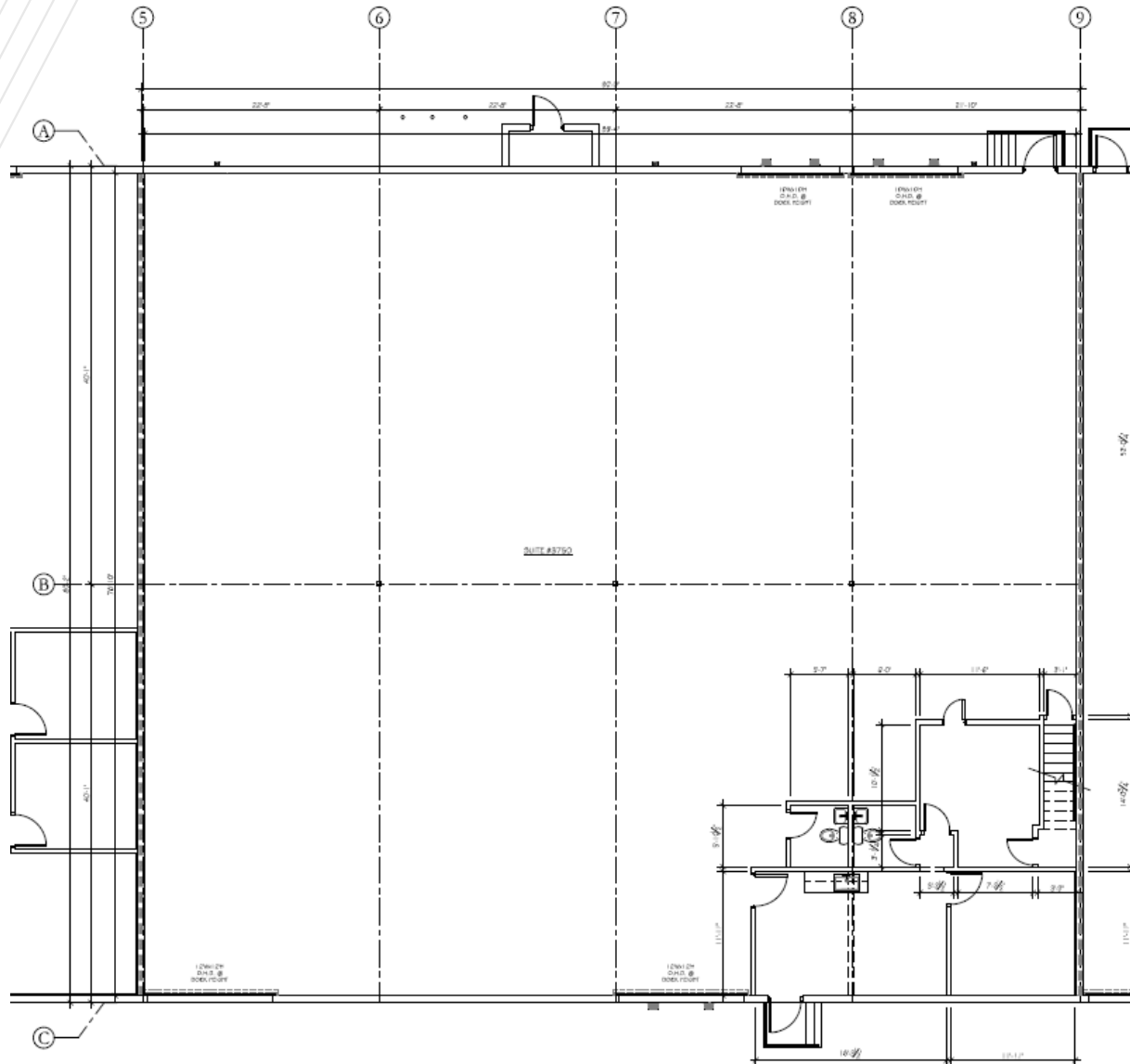
Location: Ideally situated with great proximity to I-95

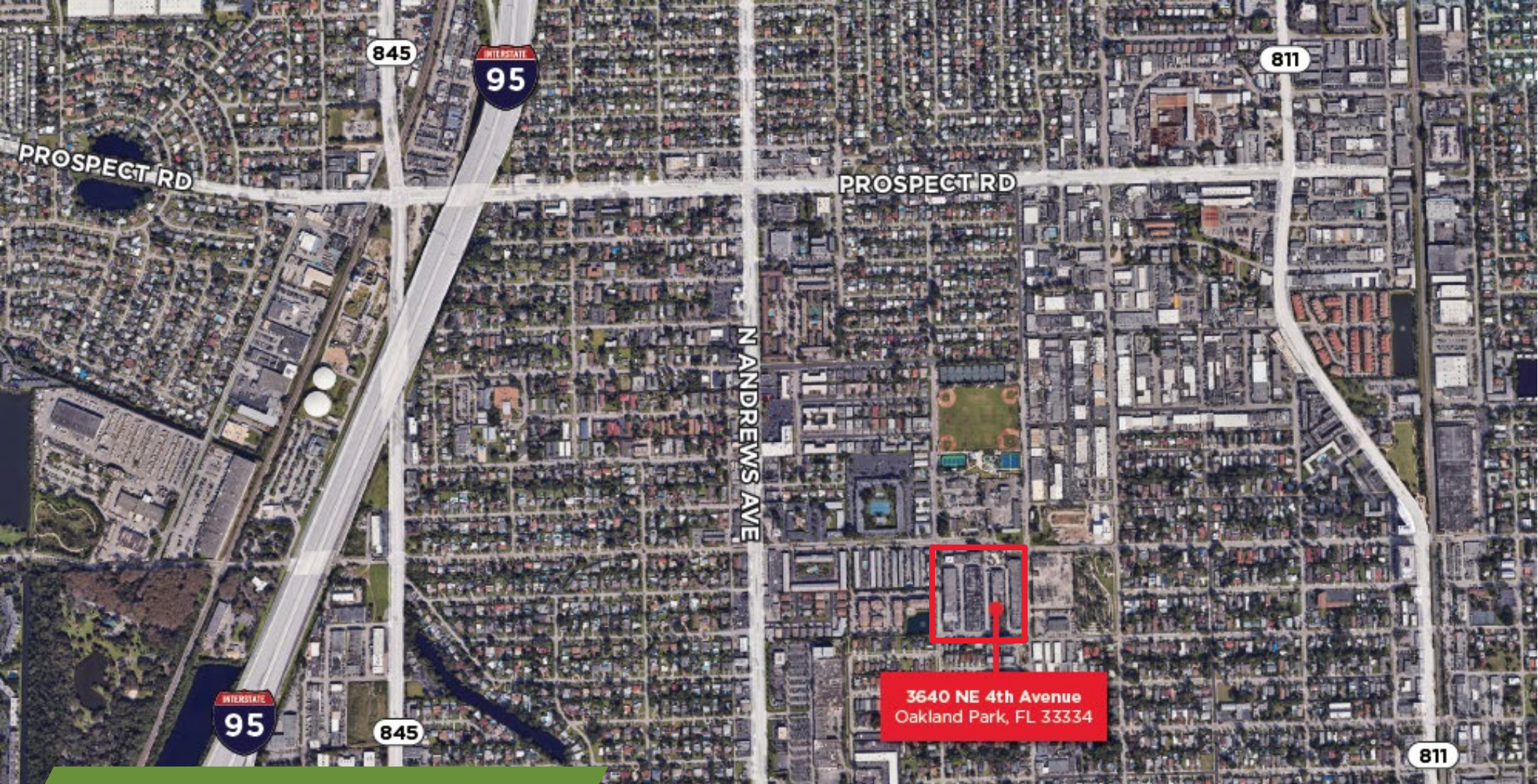


INSPACE AT OAKLAND PARK

3750 NE 4th Avenue

FLOOR PLAN





FOR MORE INFORMATION, CONTACT:

MATTHEW G. MCALLISTER, SIOR
Executive Director
+1 561 901 5216
Matthew.mcallister@cushwake.com

ERIC CANTOR
Senior Associate
+1 561 227 2068
Eric.cantor@cushwake.com

©2024 Cushman & Wakefield. All rights reserved. The information contained in this communication is strictly confidential. This information has been obtained from sources believed to be reliable but has not been verified. NO WARRANTY OR REPRESENTATION, EXPRESS OR IMPLIED, IS MADE AS TO THE CONDITION OF THE PROPERTY (OR PROPERTIES) REFERENCED HEREIN OR AS TO THE ACCURACY OR COMPLETENESS OF THE INFORMATION CONTAINED HEREIN, AND SAME IS SUBMITTED SUBJECT TO ERRORS, OMISSIONS, CHANGE OF PRICE, RENTAL OR OTHER CONDITIONS, WITHDRAWAL WITHOUT NOTICE, AND TO ANY SPECIAL LISTING CONDITIONS IMPOSED BY THE PROPERTY OWNER(S). ANY PROJECTIONS, OPINIONS OR ESTIMATES ARE SUBJECT TO UNCERTAINTY AND DO NOT SIGNIFY CURRENT OR FUTURE PROPERTY PERFORMANCE.

