

FOR LEASE

2781 PLYMOUTH RD.
ANN ARBOR, MICHIGAN



PROPERTY FEATURES

- 12,720 SF Available
- Asking Lease Rate \$21.95 PSF NNN
- Prime Location on Plymouth Rd.
- Well Maintained Plaza
- Diverse Mix of Retail and Office in Plaza
- On-Site Property Management
- Ample Parking
- Easily Accessible to US-23
- Close to U of M and Downtown Ann Arbor



FOR DETAILS CONTACT

Jason Um

jason.um@lee-associates.com

(248) 567-8009

All information furnished regarding property for sale, rental or financing is from sources deemed reliable, but no warranty or representation is made to the accuracy thereof and some is submitted to errors, omissions, change of price, rental or other conditions prior to sale, lease or financing or withdrawal without notice. No liability of any kind is to be imposed on the broker herein.

FOR LEASE

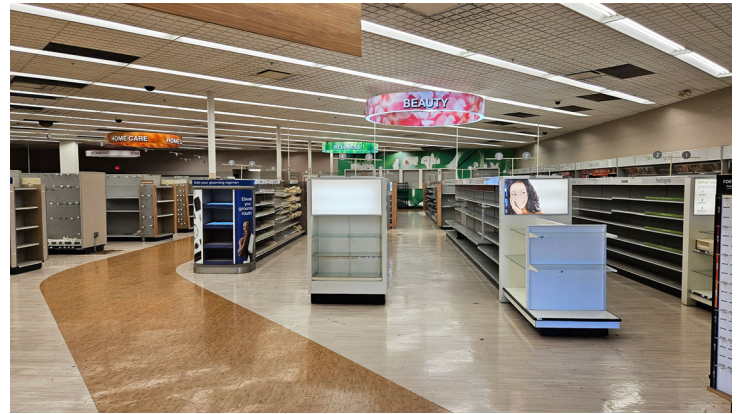
2781 PLYMOUTH RD.
ANN ARBOR, MICHIGAN



COMMERCIAL REAL ESTATE SERVICES



8334 | 248.351.3500 | lee-associates.com



All information furnished regarding property for sale, rental or financing is from sources deemed reliable, but no warranty or representation is made to the accuracy thereof and some is submitted to errors, omissions, change of price, rental or other conditions prior to sale, lease or financing or withdrawal without notice. No liability of any kind is to be imposed on the broker herein.

31440 Northwestern Highway, Suite 130 | Farmington Hills, Michigan, 48334 | 248.351.3500 | lee-associates.com