



**EXPANSION**

Frontier Estates  
271 Homes

Tanner's Mill  
Gated Community

**FRONTIER RD - 13,523 VPD**

Avilla Grove  
200 Units

**PRESTON RD - 37,000 VPD**

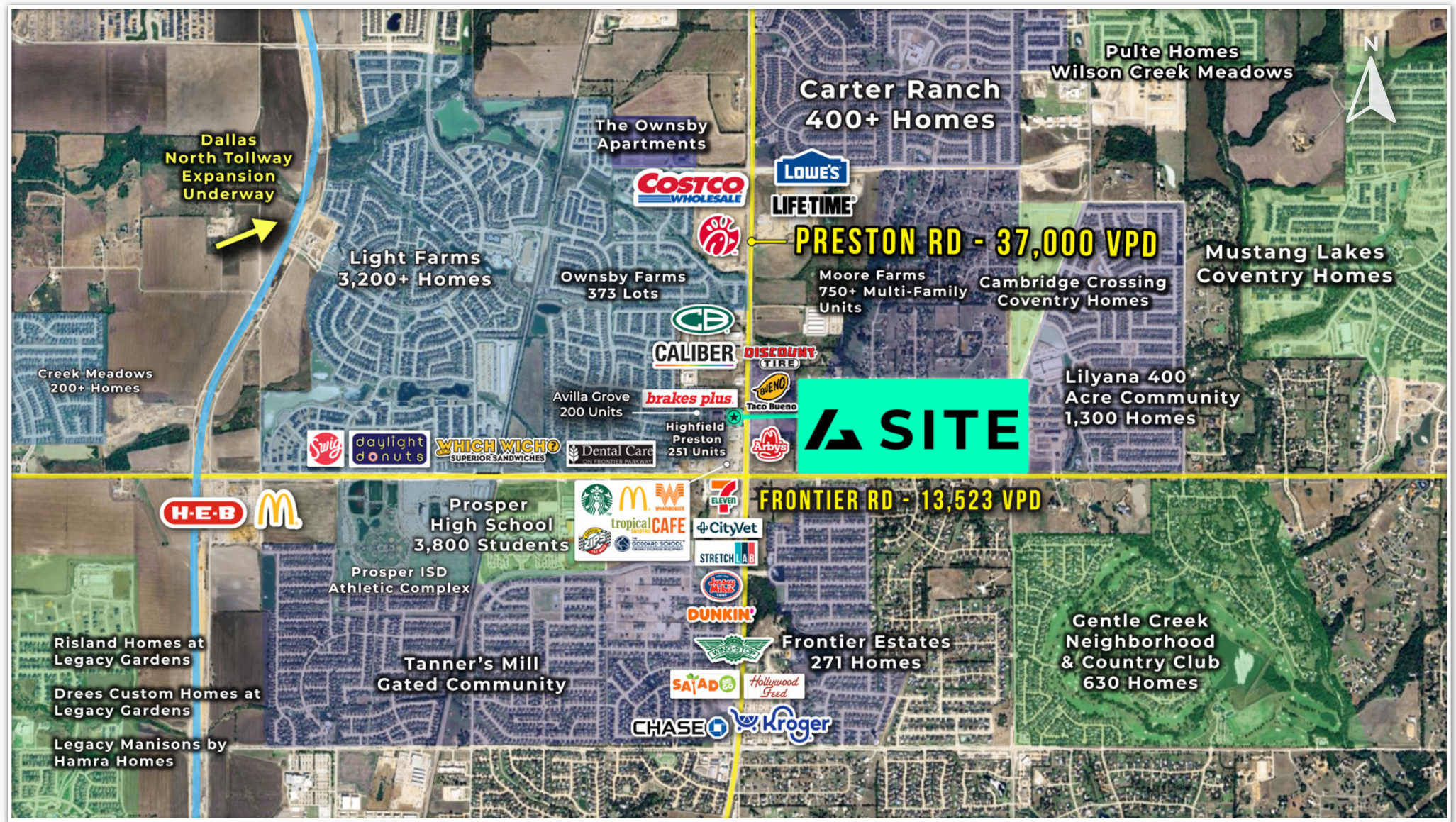


Taco Bueno



# Macro Aerial

Preston & Frontier Rd | Celina, TX 75009



Legal notice: The information herein was obtained from sources deemed reliable; however, Ashton Gray LLC makes no gaurentees, warranties, or representations as to the accuracy or completeness thereof. The presentaion of this property is subject to errors, changes of price, prior sale or lease, or withdrawal without notice.

# Summary

- Lease Rate: Call for Pricing
- Building Size: 8,034 SF
- Available For Lease: 3,000 SF
- Completion Date: Q4 2025
- Co-Tenants: TBD

## Property Overview

- Prime positioned retail center on Preston Rd (37,000 VPD)
- Red hot suburb showing double-digit growth in 1m radius
- AHHI exceeding 175k in all radii
- Rated America's fastest growing area by CoStar in June 24

## Demographics

### 2025 Population

8,397 1 Mile	32,120 3 Mile	95,753 5 Mile
-----------------	------------------	------------------

### 2029 Projected Growth ('25-'29)

13.20% 1 Mile	7.60% 3 Mile	6.60% 5 Mile
------------------	-----------------	-----------------

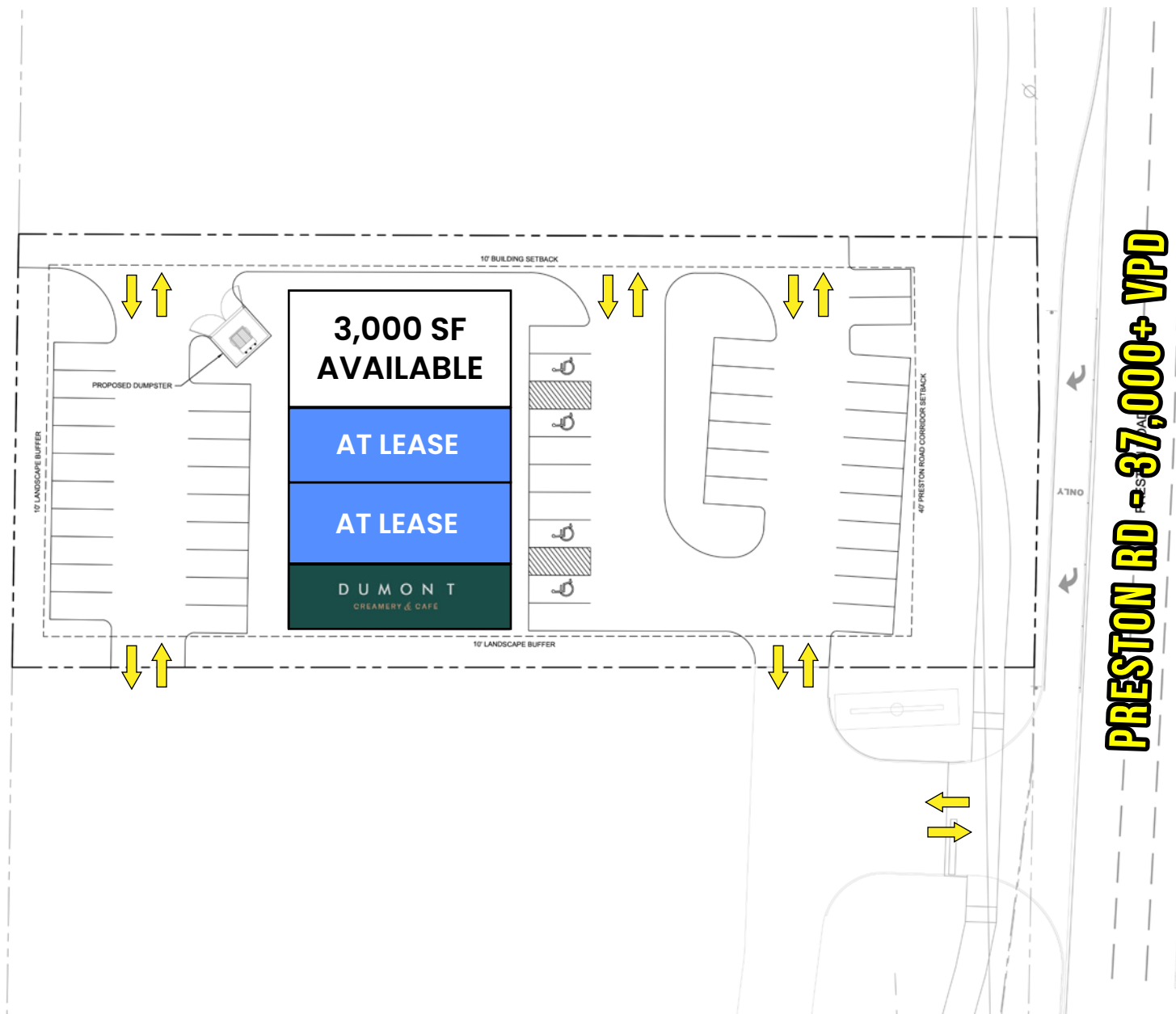
### Avg. Household Income

\$187,909 1 Mile	\$188,975 3 Mile	\$176,884 5 Mile
---------------------	---------------------	---------------------



# Site Plan

Preston & Frontier Rd | Celina, TX 75009



# Floor Plan

Preston & Frontier Rd | Celina, TX 75009





---

**Michael Feighny**  
Director Retail Leasing - Texas

O: +1 (405) 300-4003  
P: +1 (405) 361-9778  
E: [michaelfeighny@ashtongray.com](mailto:michaelfeighny@ashtongray.com)



---

**Jack Geurkink**  
Director Healthcare Leasing

O: +1 (405) 300-4003  
P: +1 (405) 249-0890  
E: [jackgeurkink@ashtongray.com](mailto:jackgeurkink@ashtongray.com)

