

140 EAST TOWN STREET

DOWNTOWN | COLUMBUS, OHIO

OFFICE FOR LEASE

27,799 SF AVAILABLE

ON-SITE PARKING

NEWMARK



140 EAST TOWN STREET

COLUMBUS, OHIO 43215



PROPERTY HIGHLIGHTS

- Office suites available from 2,042 SF to 16,434 SF
- 140 E. Town Street has won BOMA's TOBY Award for the North Central Region, recognizing quality and rewarding excellence in building management, every year since 2009
- On-site property management and building security is manned 24/7/365
- Adjacent to Columbus Commons, a 6 acre park in the heart of downtown offering regular special events as well as many other amenities

BUILDING SIZE

169,309 SF

MAX CONTIGUOUS

16,434 SF

ASKING RATE

\$19.50/SF FSG

ON-SITE PARKING

\$125.00/MONTH



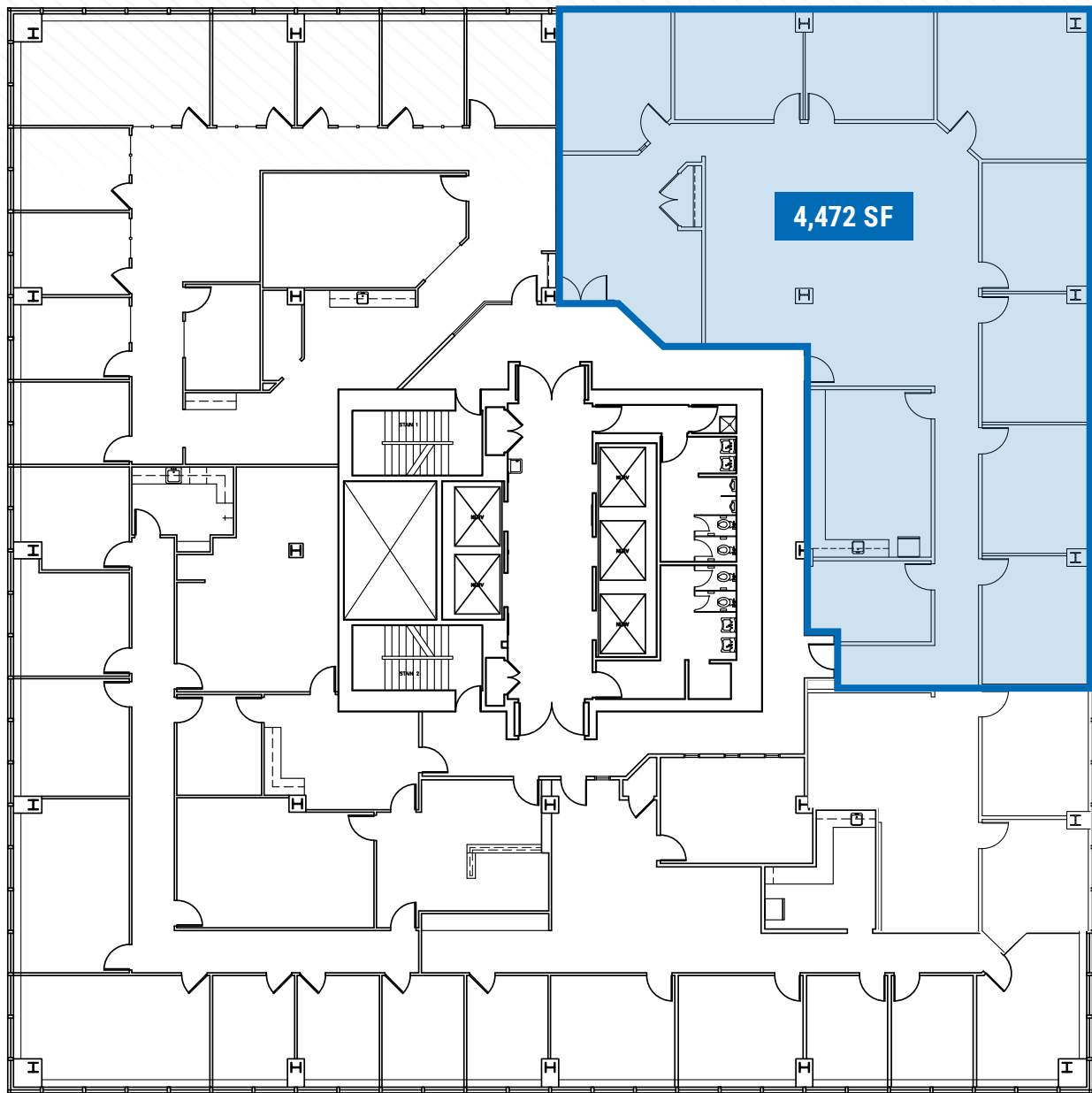
AMENITIES INCLUDE

- Updated common area training facility available to all tenants on a first come first serve basis
- Directly next to a spacious green space with professional landscaping and several seating areas



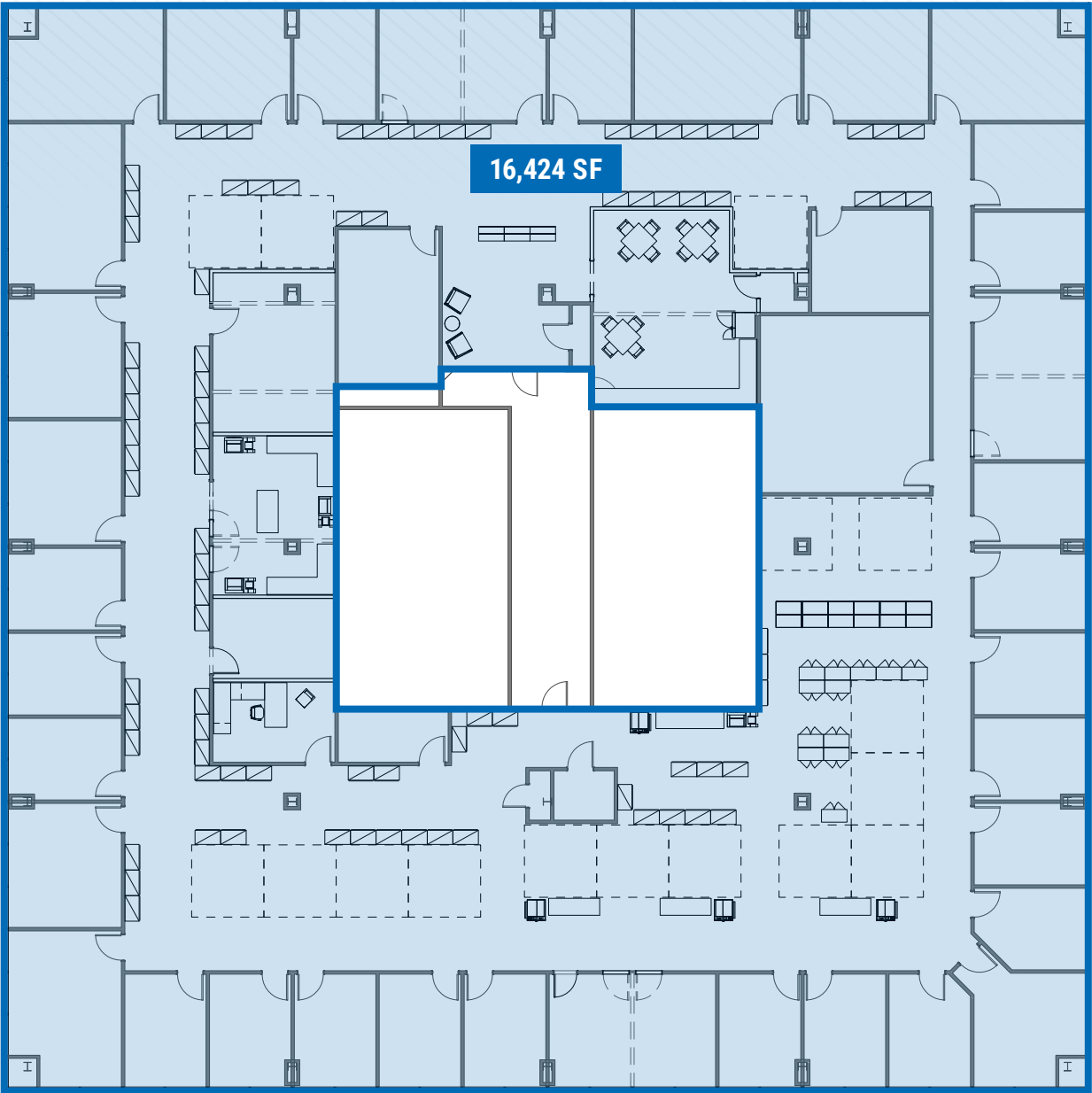
AVAILABLE SPACE

FLOOR 10



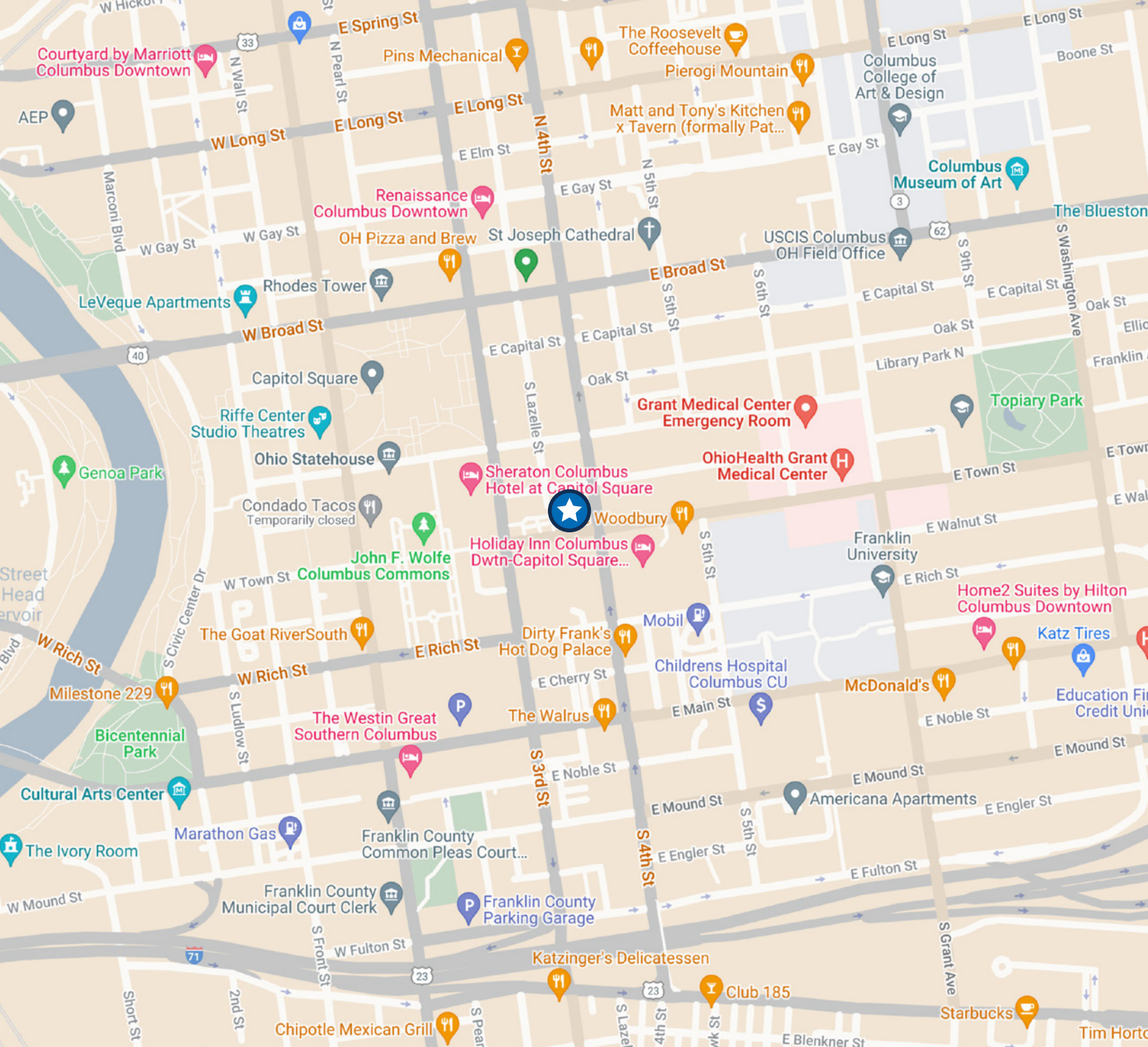
AVAILABLE SPACE

FLOOR 15



15TH FLOOR / SUITE PHOTOS





CORY KOOPERMAN, CCIM

Managing Director

+1 614 883 1035

cory.kooperman@nrmk.com

WAYNE HARER, CCIM, SIOR

Executive Managing Director

+1 614 883 1051

wayne.harer@nrmk.com

nrmk.com

150 E. BROAD STREET, SUITE 500, COLUMBUS, OHIO 43215

NEWMARK

The information contained herein has been obtained from sources deemed reliable but has not been verified and no guarantee, warranty or representation, either express or implied, is made with respect to such information. Terms of sale or lease and availability are subject to change or withdrawal without notice.