



## 7436 TOWER ST

15,000 SF Total | 4,437 SF Office

### OFFERING SUMMARY

Midway Business Park is a premier industrial development spanning 258,846 square feet across twelve versatile buildings in the heart of Richland Hills, Texas. Strategically located in central Tarrant County, this dynamic business hub offers exceptional freeway visibility and immediate access to major highways, placing tenants just minutes from downtown Fort Worth and DFW International Airport. Surrounded by a robust and diverse labor pool, Midway Business Park is designed to accommodate a wide range of tenant needs, with flexible suite sizes from 2,000 to 40,000 square feet. Whether you're a growing business or an established enterprise, Midway Business Park delivers the accessibility, visibility, and workforce proximity essential for success.

Owned by:

Ackerman & Co.

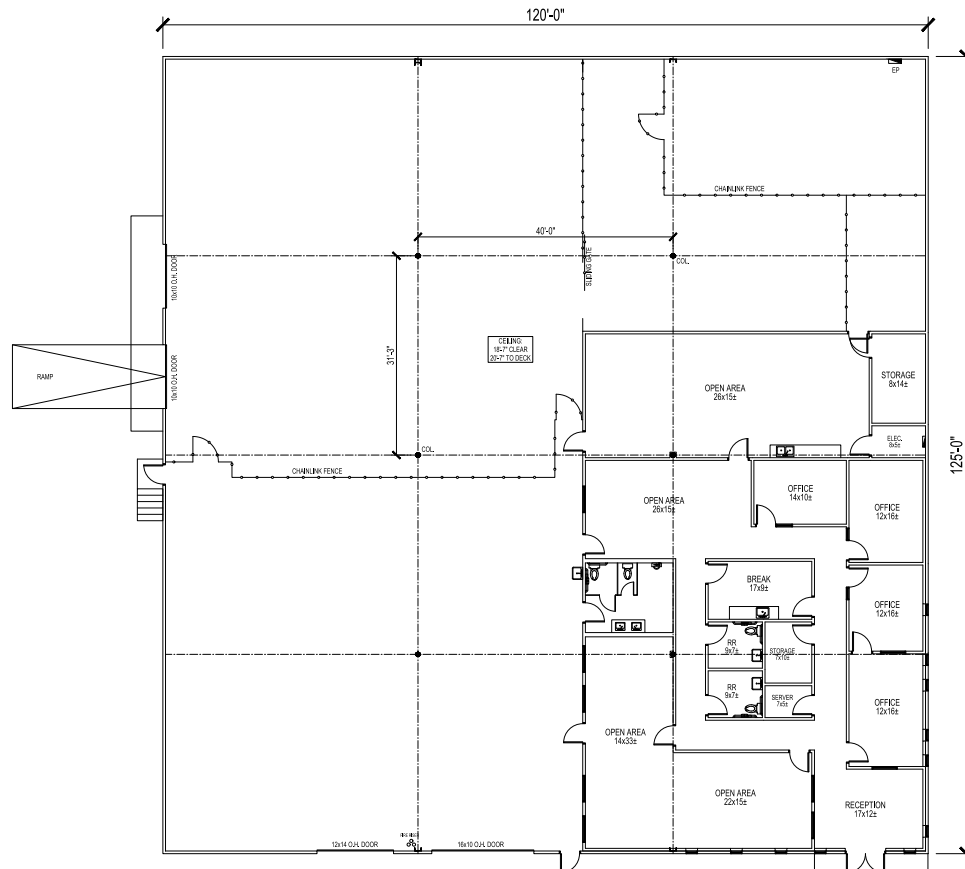
Leased by:

HPI

# 15,000 SF FOR SALE OR LEASE

**MBP** | MIDWAY  
BUSINESS  
PARK

7436 Tower St, Richland Hills, TX 76118



## HIGHLIGHTS

- 15,000 SF
- 4,437 SF of Office
- One (1) 10x10 Dock Door
- One (1) 10x10 Ramp Door
- Two (2) Grade Level Door: 12'x14' & 16'x10'
- Clear Height: 18'
- Single Tenant Building
- Fenced Outdoor Storage



# 15,000 SF FOR SALE OR LEASE

**MBP** | MIDWAY  
BUSINESS  
PARK

7436 Tower St, Richland Hills, TX 76118



# FOR SALE OR LEASE

# MBP | MIDWAY BUSINESS PARK

