

**FOR LEASE**

# Peachtree Corners Office Headquarters

**3495 HOLCOMB BRIDGE ROAD**

Peachtree Corner, GA 30092

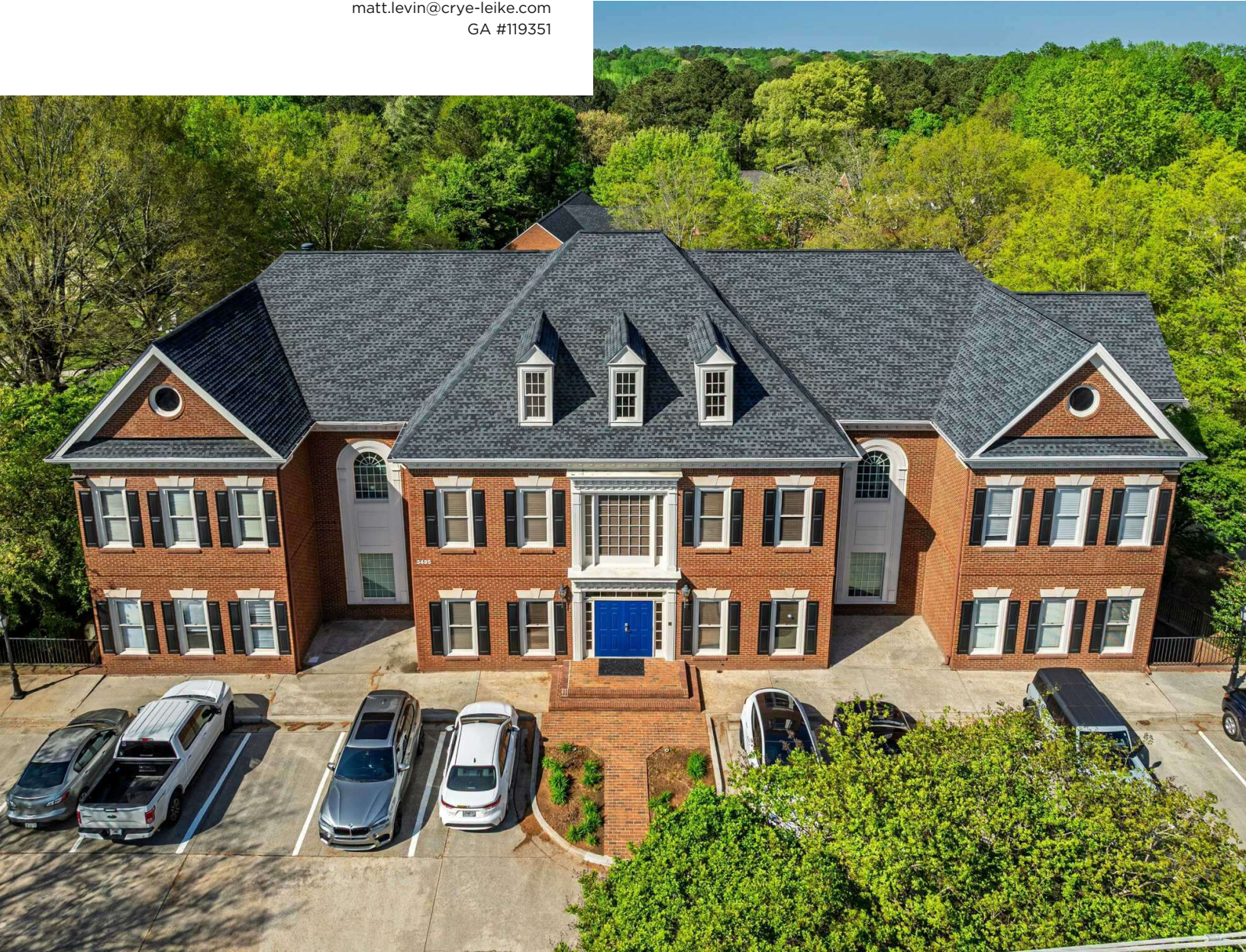
**PRESENTED BY:**

**MATT LEVIN, CCIM**

O: 770.209.1700

[matt.levin@crye-leike.com](mailto:matt.levin@crye-leike.com)

GA #119351



## PROPERTY DETAILS & HIGHLIGHTS

<b>BUILDING NAME</b>	Peachtree Corners Office Headquarters For Lease
<b>ADDRESS</b>	3495 Holcomb Bridge Rd, Peachtree Corners, GA 30092
<b>BUILDING SIZE</b>	16,497 RSF+-
<b>AVAILABLE SPACES</b>	5,499 / 10,988 / 16,497
<b>RENT</b>	Inquire
<b>ELEVATOR SERVED</b>	Yes
<b>FREESTANDING</b>	Yes
<b>NUMBER OF FLOORS</b>	3
<b>AVERAGE FLOOR SIZE</b>	5,499 SF

For lease is a three story 16,497 SF+- elevator served headquarters office building in growing Peachtree Corners, offering businesses a branding opportunity with prominent signage, over 200 feet of frontage and exposure to over 41,000 vehicles per day. Each well-lit floor is a flexible combination of open plan and private offices. The site accommodates 80 parking spaces, a high ratio of 4.8 spaces per 1,000 SF. Spaces are available as 5,499 SF+-, 10,988 SF+- or 16,497 SF+-.

Holcomb Bridge Road is a major east-west artery connecting Cobb, Fulton, Gwinnett and Dekalb counties. The pivotal location provides convenient access to GA 400 (7 miles), I-285 & I-85 (6 miles), Peachtree Industrial Boulevard and Peachtree Parkway.



- Headquarters office for lease 5,499 RSF+- to 16,497 RSF+-
- Three story elevator served office with 80 parking spaces
- Available as 5,499 RSF / 10,998 SF / 16,497 SF
- Each floor a flexible combination of open plan and private offices
- Abundant 80 parking spaces / 4.8 per 1,000 SF
- Branding opportunity 200+ feet of frontage visible by 41,000+ vehicles per day
- 4 lane major east-west artery connecting Cobb, Gwinnett, Fulton and Dekalb counties
- Growing Peachtree Corners location
- 7 miles to GA 400 / 6 miles to I-285 & I-85

**MATT LEVIN, CCIM**  
O: 770.209.1700  
matt.levin@crye-leike.com  
GA #119351

## ADDITIONAL PHOTOS



**MATT LEVIN, CCIM**  
O: 770.209.1700  
matt.levin@crye-leike.com  
GA #119351

# ADDITIONAL PHOTOS

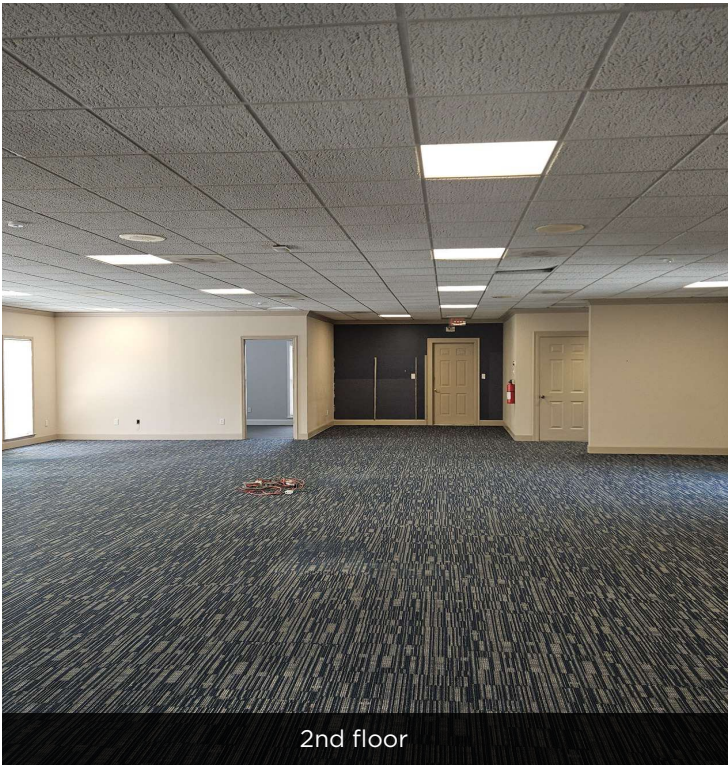


**MATT LEVIN, CCIM**  
O: 770.209.1700  
matt.levin@crye-leike.com  
GA #119351

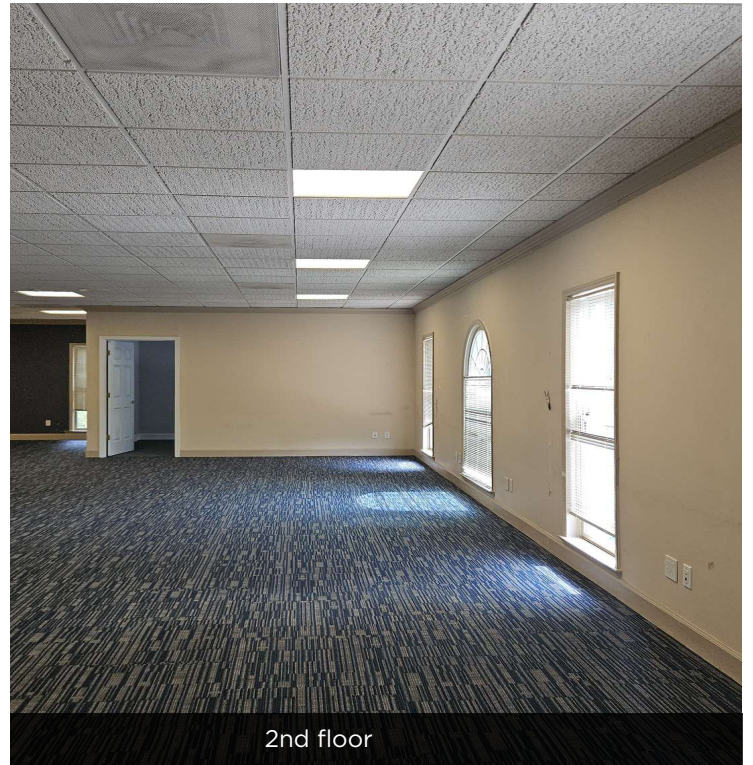
## ADDITIONAL PHOTOS



Each floor is a combination of open plan and private offices.



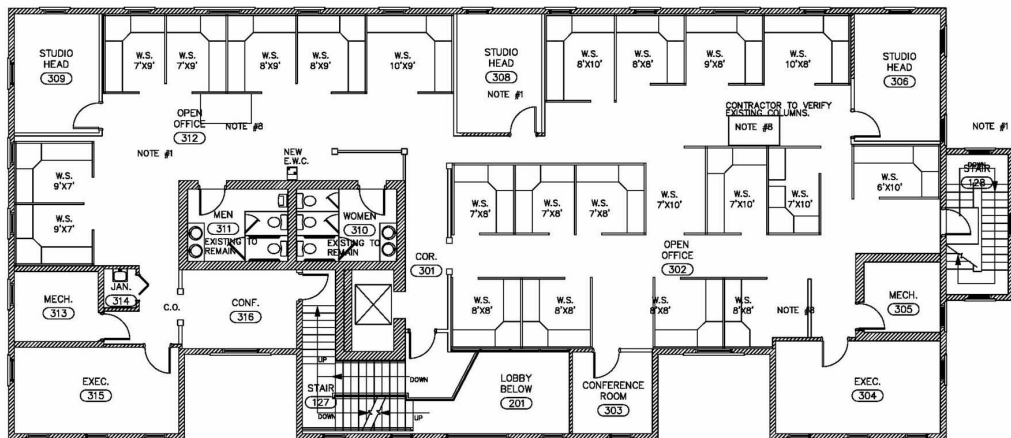
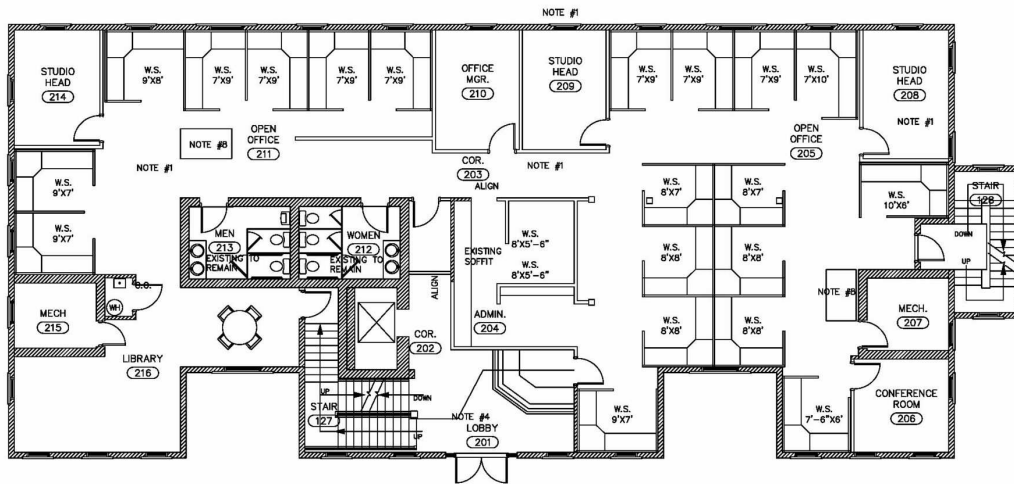
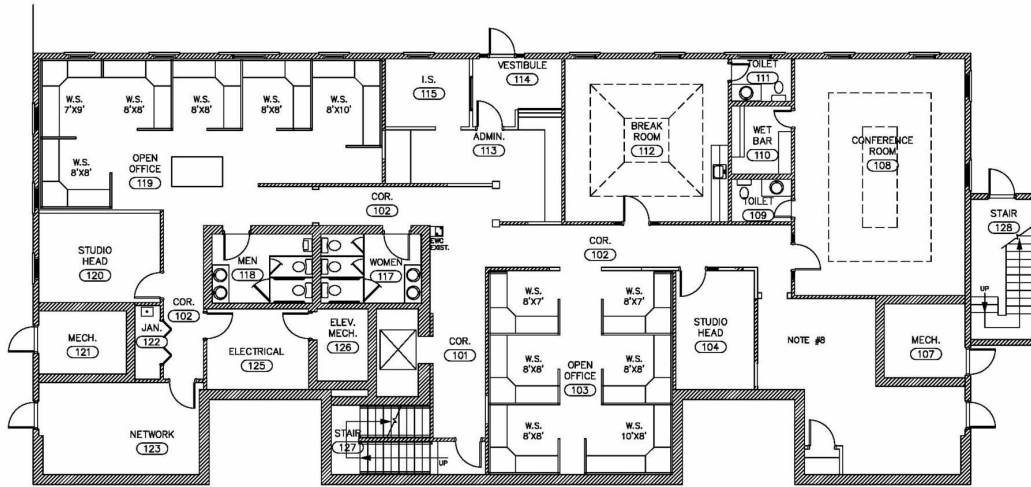
2nd floor



2nd floor

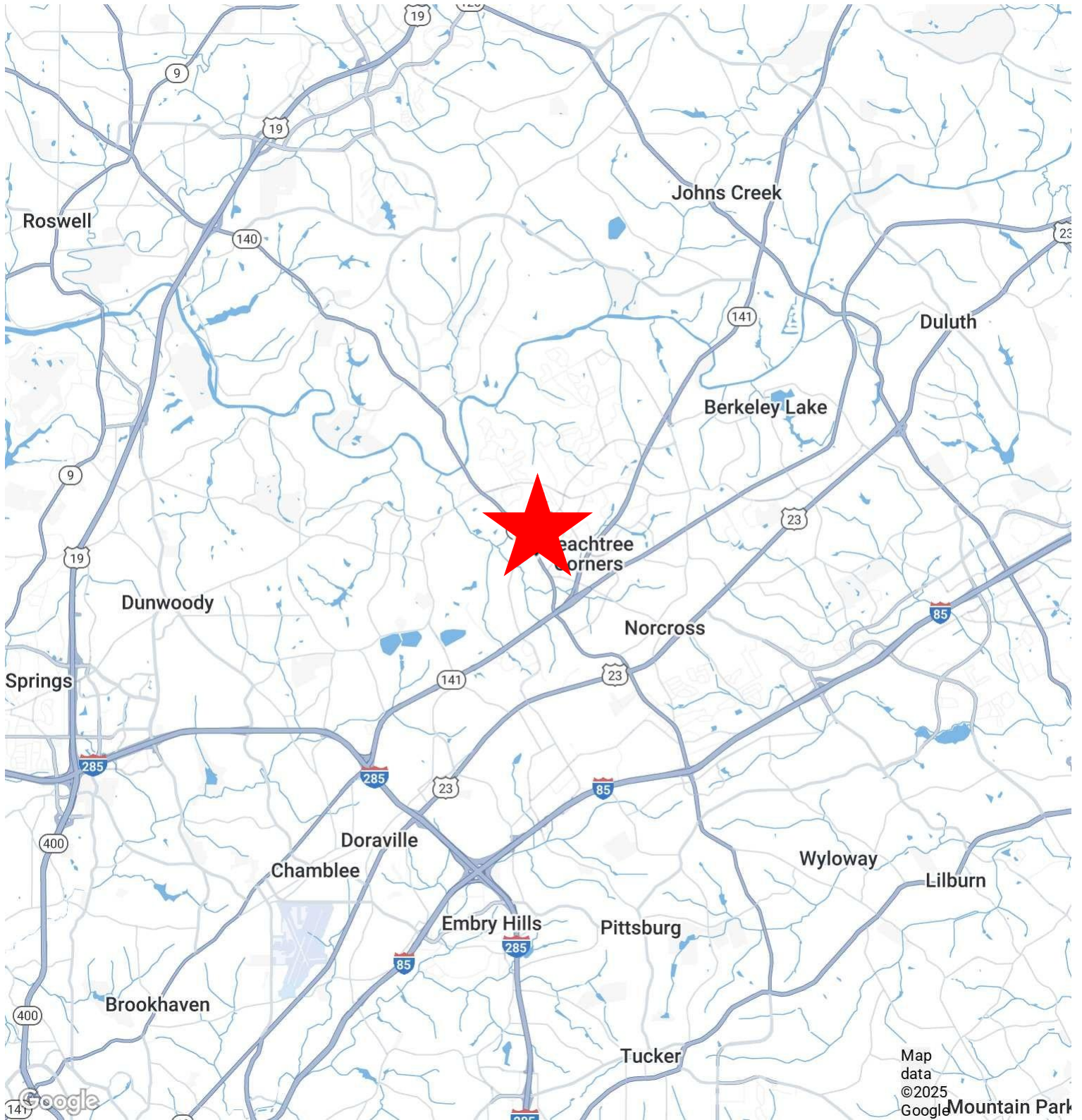
**MATT LEVIN, CCIM**  
O: 770.209.1700  
matt.levin@crye-leike.com  
GA #119351

# FLOOR PLANS



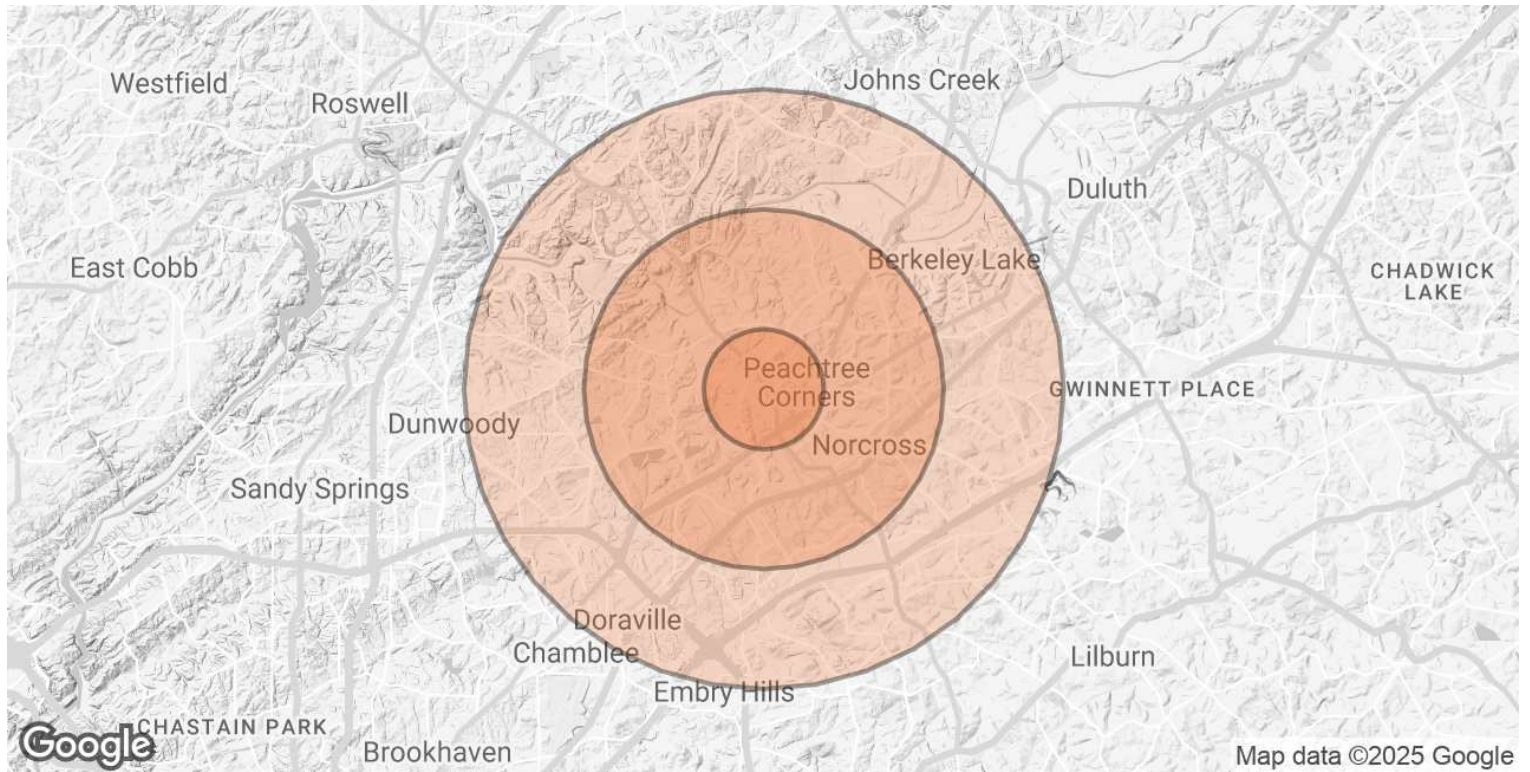
**MATT LEVIN, CCIM**  
 O: 770.209.1700  
 matt.levin@crye-leike.com  
 GA #119351

# MAP



MATT LEVIN, CCI, M  
O: 770.209.1700  
matt.levin@crye-leike.com  
GA #119351

# DEMOGRAPHICS MAP & REPORT



<b>POPULATION</b>	<b>1 MILE</b>	<b>3 MILES</b>	<b>5 MILES</b>
<b>TOTAL POPULATION</b>	16,543	79,189	225,078
<b>AVERAGE AGE</b>	36	38	38
<b>AVERAGE AGE (MALE)</b>	35	38	37
<b>AVERAGE AGE (FEMALE)</b>	37	39	39
<b>HOUSEHOLDS &amp; INCOME</b>	<b>1 MILE</b>	<b>3 MILES</b>	<b>5 MILES</b>
<b>TOTAL HOUSEHOLDS</b>	7,461	30,363	84,397
<b># OF PERSONS PER HH</b>	2.2	2.6	2.7
<b>AVERAGE HH INCOME</b>	\$75,328	\$123,699	\$129,007
<b>AVERAGE HOUSE VALUE</b>	\$419,184	\$522,183	\$505,606

*Demographics data derived from AlphaMap*

**MATT LEVIN, CCIM**  
 O: 770.209.1700  
 matt.levin@crye-leike.com  
 GA #119351

## ADVISOR BIO



### MATT LEVIN, CCIM

matt.levin@rye-leike.com

Direct: **770.209.1700** | Cell: **678.467.9658**

GA #119351

### PROFESSIONAL BACKGROUND

Matt Levin, CCIM, focuses on the sale and leasing of retail, office and industrial properties. With over 30 years experience in the real estate industry, he has completed over 500 transactions valued at \$300 million. Prior to joining Crye-Leike Commercial, Matthew was a multi-year recipient of the Partner Circle Award, SVN Commercial Real Estate's highest recognition, and consistently performed in the top 100 of advisors nationally.

Prior to joining SVN, Matt served as President of Dekalb Realty Company. Previously, he served as a \$250 million Commercial Real Estate Non-Performing Loan Portfolio Manager for the Federal Deposit Insurance Corporation (FDIC).

Mat is a Phoenix Award recipient of the Atlanta Commercial Board of Realtors' Million Dollar Club. He is past president of the Georgia State University, Real Estate Alumni Group, and past chairman of the Scholarship Committee of the Georgia Chapter of CCIM.

Matt received his Bachelor of Arts from Emory University and Master of Science degree in Real Estate from Georgia State University.

He lives with his wife of over 30 years Valerie and daughter Camille. Matt is an avid sailor having first learned from his father. "Sailing is much like life, you're heading for a destination and the changes in weather, wind and current require anticipation, attention and adjustment. Getting there can be as interesting as arriving."

#### CRYE-LEIKE COMMERCIAL

5940 Bethelview Road,  
Cumming, GA 30040  
770.209.1700

#### MATT LEVIN, CCIM

O: 770.209.1700

matt.levin@crye-leike.com

GA #119351