



**FREE RENT AVAILABLE**



**BRIT BANKS**  
**Senior Broker Associate**  
Direct: 303.945.2020  
Cell: 303.903.9775  
bbanks@deancallan.com

**TORREY PATTERSON**  
**Broker Associate**  
Direct: 720.826.2291  
Cell: 303.514.4559  
tpatterson@deancallan.com

**DEAN CALLAN & COMPANY, INC.**  
1510 28th Street, Suite 200  
Boulder, Colorado 80303  
303.449.1420 | [www.deancallan.com](http://www.deancallan.com)

## **OFFICE & WAREHOUSE SPACE FOR LEASE**

**WASHINGTON GARDENS CENTER  
800-850 EAST 73RD AVENUE  
DENVER, COLORADO 80229**

Ideal office and warehouse space at Washington Gardens Center. Located in prime north-central Denver, this property grants exceptional visibility and access to major Denver Metro areas. Enjoy air-conditioned office space, ample parking, and essential features like 16-foot clear height, 3-phase electrical, and drive-in loading doors.

**Call us for more information and to set up a tour.**

## TERMS

Unit 800-1 (Office):

1,190 SF

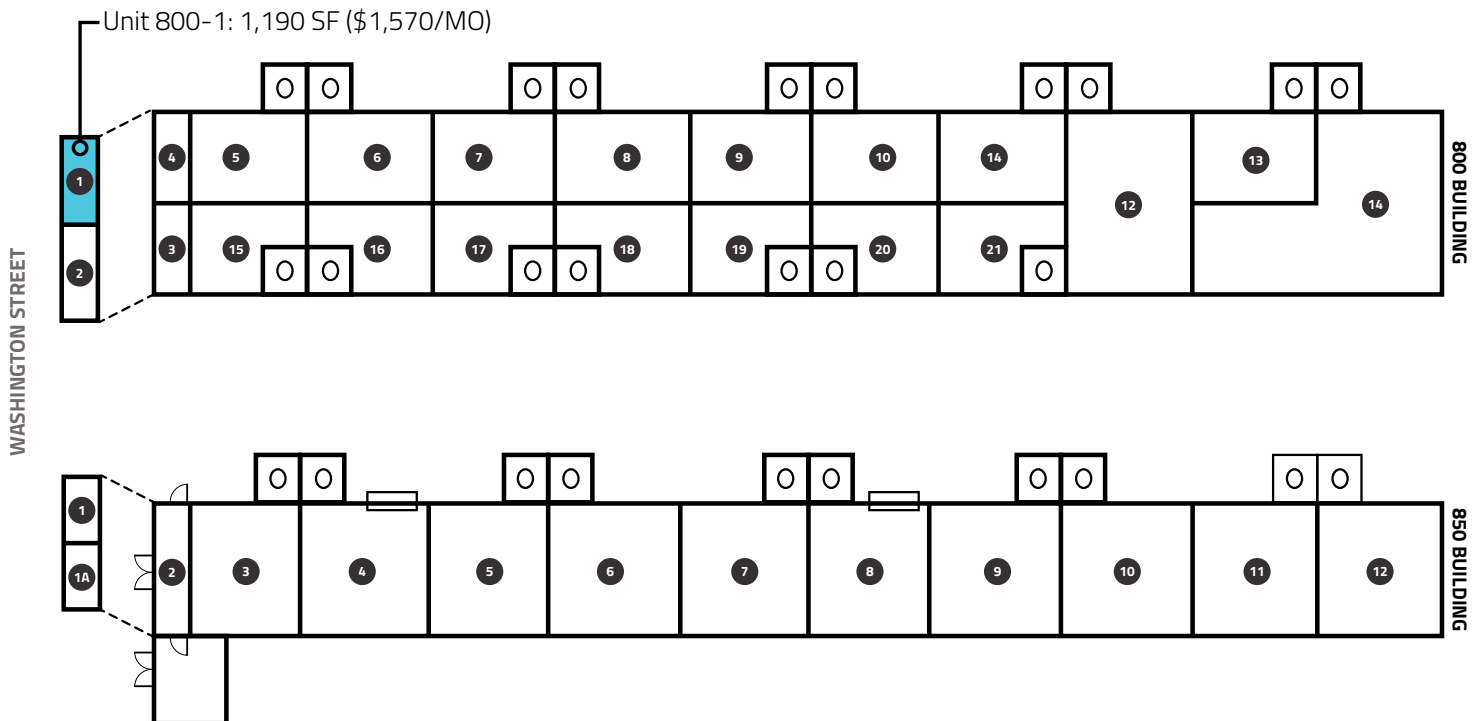
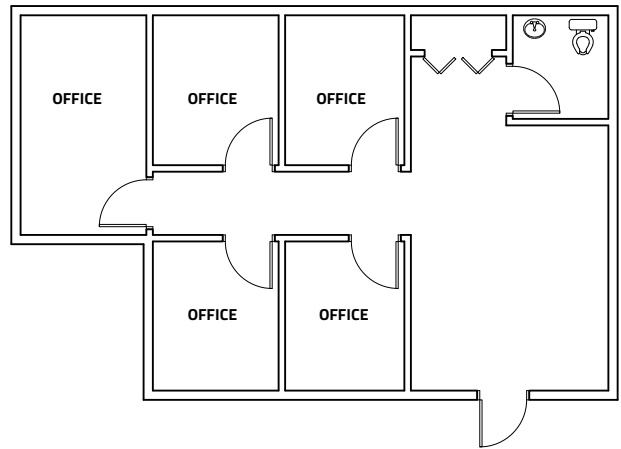
Lease Rate:

\$1,570/Month Gross

## PROPERTY FEATURES

- Unit 800-1 is 100% office space on the second floor with only stair-well access
- Prime north central location
- Excellent highway access and highway visibility
- Air-conditioned
- Ample, convenient parking
- Located at the southeast corner of Washington Street & 73rd Avenue

UNIT 800 - 1 | FLOOR PLAN





## DEAN CALLAN

### & COMPANY INC

#### BRIT BANKS

Senior Broker Associate

Direct: 303.945.2020

Cell: 303.903.9775

[bbanks@deancallan.com](mailto:bbanks@deancallan.com)

#### TORREY PATTERSON

Broker Associate

Direct: 720.826.2291

Cell: 303.514.4559

[tpatterson@deancallan.com](mailto:tpatterson@deancallan.com)

#### DEAN CALLAN & COMPANY, INC.

1510 28th Street, Suite 200

Boulder, Colorado 80303

303.449.1420 | [www.deancallan.com](http://www.deancallan.com)



All information furnished regarding this property is obtained from sources deemed reliable. Dean Callan & Company, Inc. makes no representation, guarantee or warranty, expressed or implied, as to the accuracy thereof.