

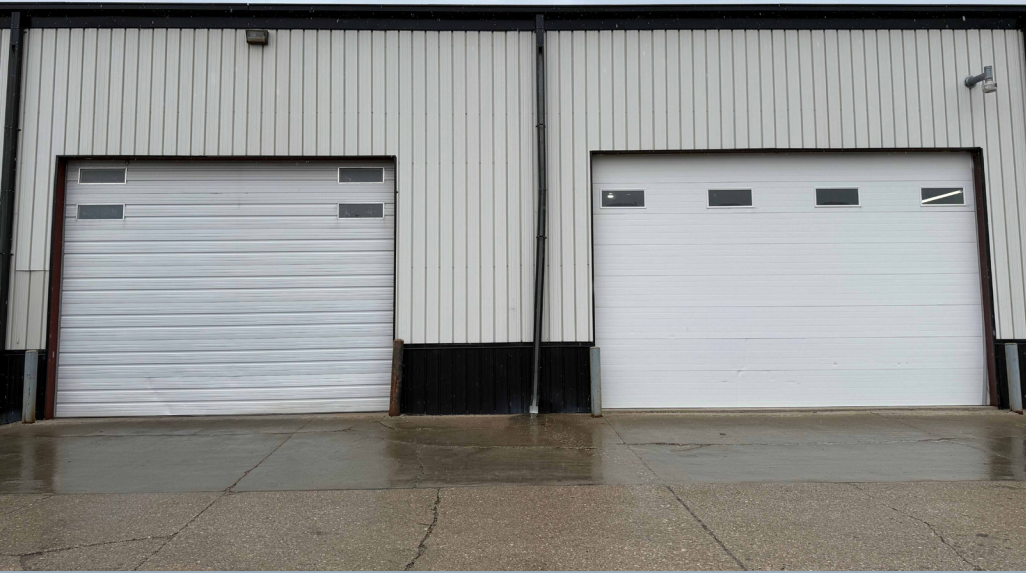
**11,900 SF
FOR LEASE**

5727

NE 16th Street

Des Moines, IA

CBRE



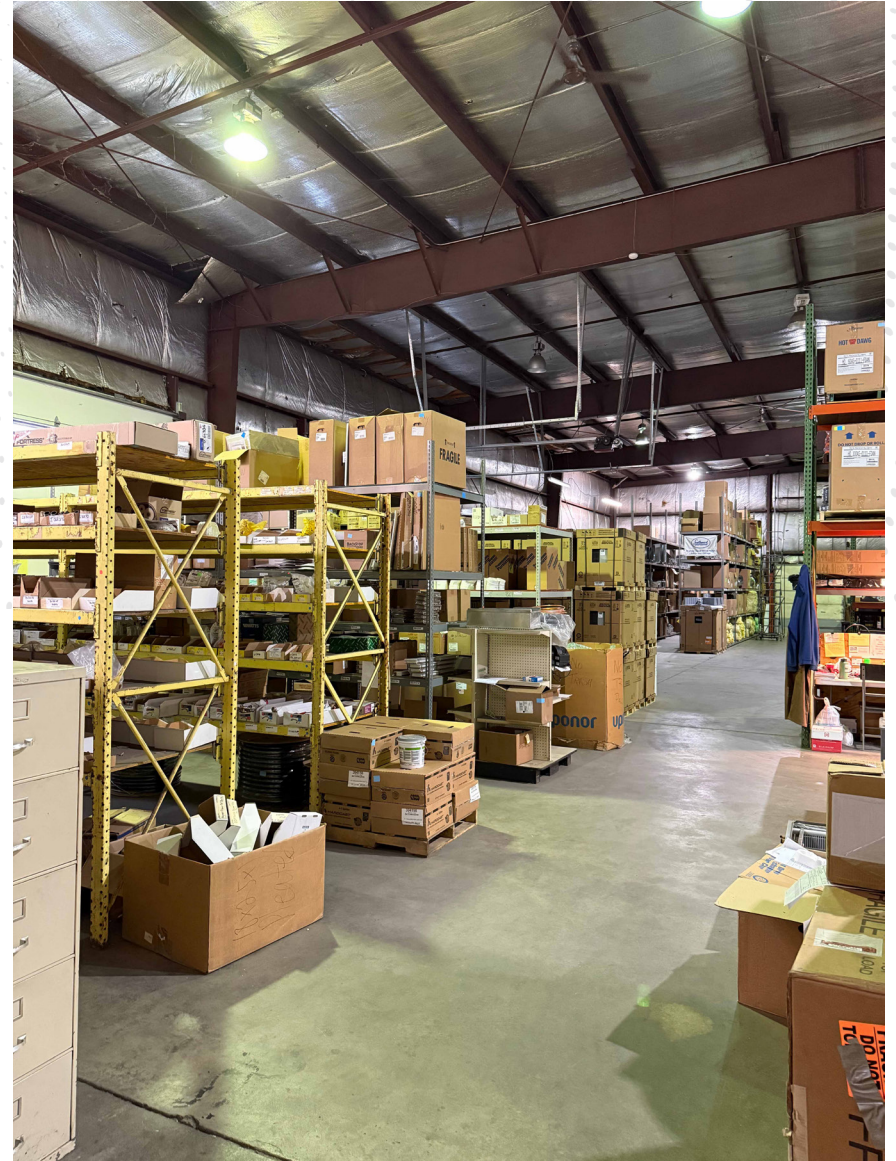
EXECUTIVE SUMMARY

This 11,900 SF flex building in Northeast Des Moines offers a versatile layout featuring two drive-in doors and two dock-high doors to support a variety of industrial or service uses. The property includes approximately 1,900 SF of existing office/showroom buildout, providing immediate functionality with a strong balance of warehouse space for efficient operations.

PROPERTY OVERVIEW

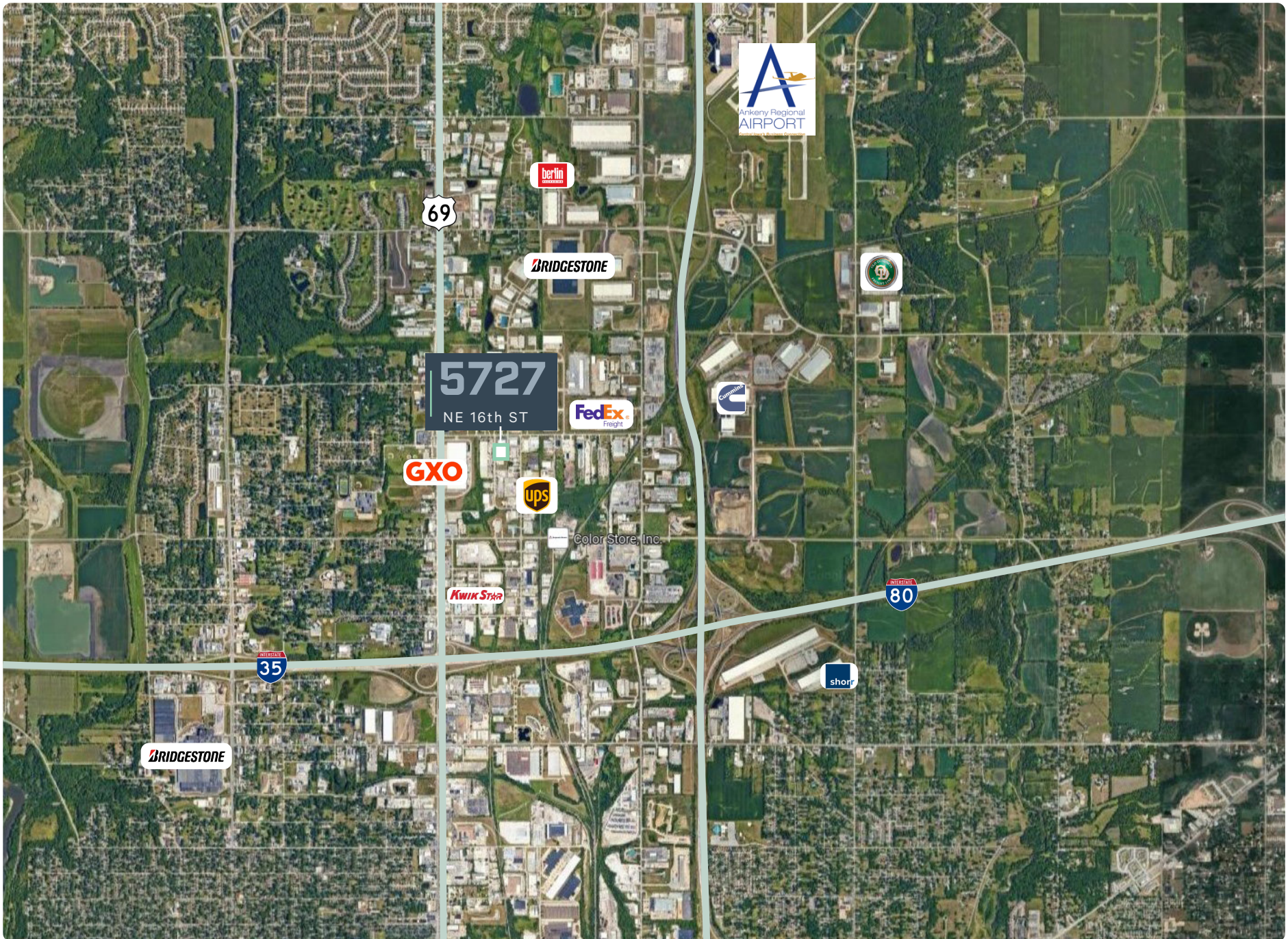
Lease Rate	\$9.25 NNN
Warehouse	10,000 SF
Office/Showroom	1,900 SF <ul style="list-style-type: none">• 3 Private Offices• 2 Restrooms• Breakroom
Drive-In Doors	2 <ul style="list-style-type: none">• 1 (16' x 18')• 1 (16' x 15')
Docks	2 (8' x 10')
Clear Height	22'
Heat	Reznor

INTERIORS



AERIAL





5727
NE 16th St



Harrison Kruse,SIOR,CCIM

First Vice President

+1 515 556 9168

harrison.kruse@cbre.com

Licensed in the State of Iowa

Ned Turner

Senior Associate

+1 515 371 0499

ned.turner@cbre.com

Licensed in the State of Iowa

Francesca Smith

Associate

+1 515 829 0556

francesca.smith@cbre.com

Licensed in the State of Iowa

© 2026 CBRE, Inc. All rights reserved. This information has been obtained from sources believed reliable but has not been verified for accuracy or completeness. You should conduct a careful, independent investigation of the property and verify all information. Any reliance on this information is solely at your own risk. CBRE and the CBRE logo are service marks of CBRE, Inc. All other marks displayed on this document are the property of their respective owners, and the use of such logos does not imply any affiliation with or endorsement of CBRE. Photos herein are the property of their respective owners. Use of these images without the express written consent of the owner is prohibited.

CBRE