

**AVAILABLE | 182,831 SF**

# 116 CAMERON STREET

ELIZABETHTOWN, PA

Ownership Group:



Listing Team:



LEASED

**CERTIFICATE OF  
OCCUPANCY IN PLACE**



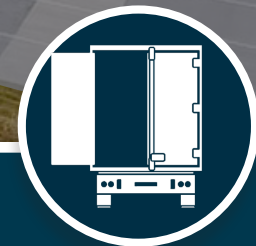
*Centralized Location  
on Rt-283 Corridor*



*Abundant  
Labor Access*



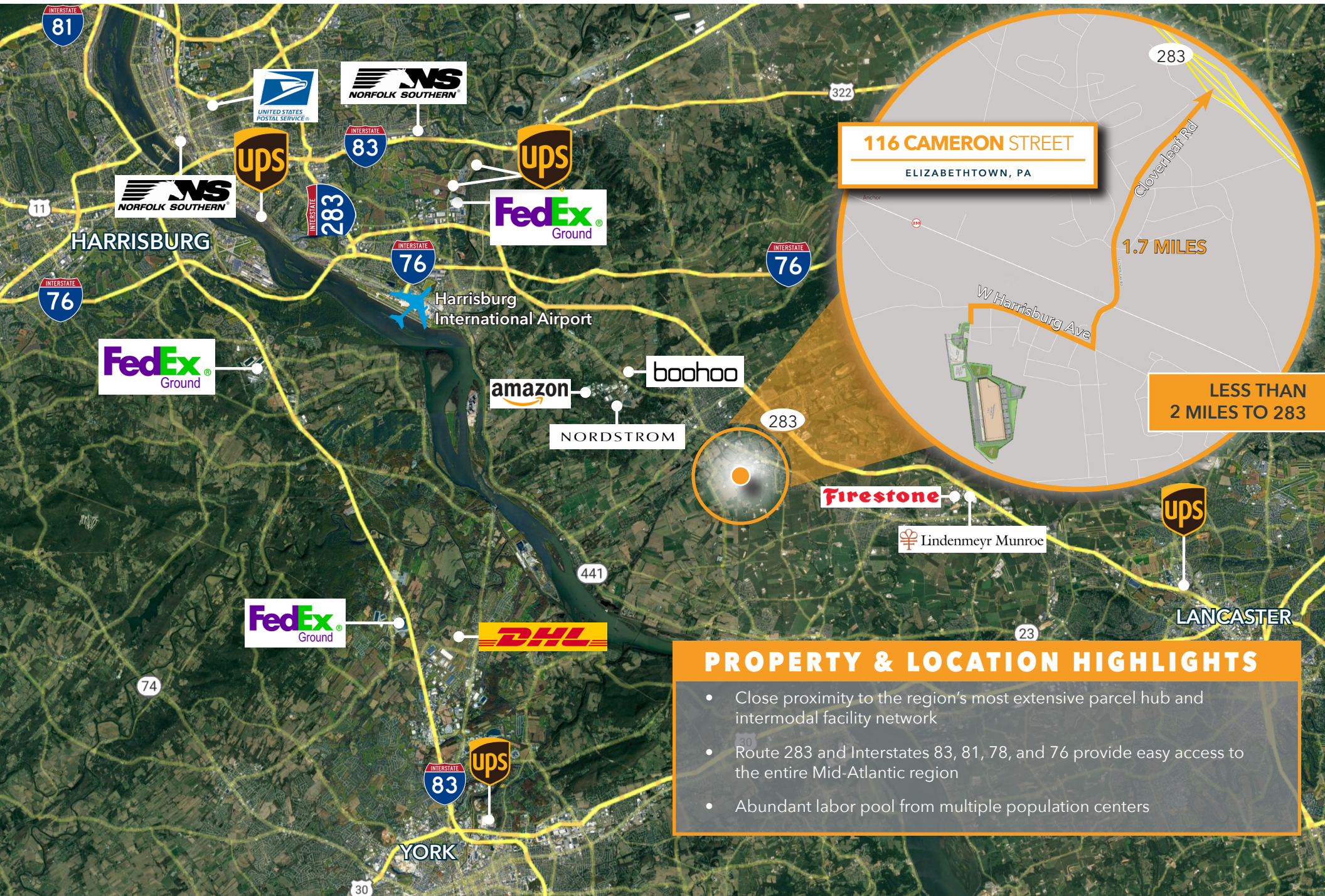
*Unparalleled Access  
to Parcel Hubs*



*Heavy Trailer  
Parking*



# 116 CAMERON STREET | ELIZABETHTOWN, PA



**116 CAMERON STREET**  
ELIZABETHTOWN, PA

1.7 MILES

LESS THAN  
2 MILES TO 283

### PROPERTY & LOCATION HIGHLIGHTS

- Close proximity to the region's most extensive parcel hub and intermodal facility network
- Route 283 and Interstates 83, 81, 78, and 76 provide easy access to the entire Mid-Atlantic region
- Abundant labor pool from multiple population centers

# 116 CAMERON STREET | ELIZABETHTOWN, PA

## MARKET ACCESS AND INFRASTRUCTURE



Same Day Delivery

	Miles	Minutes
Harrisburg, PA	24	31
Baltimore, MD	74	83
Wilmington, DE	85	90
Allentown, PA	87	95
Philadelphia, PA	93	99
New York City, NY	176	173



Ports

Port of Baltimore	74	85
Port of Wilmington	85	102
Port of Philadelphia	98	105
Port of Newark / Elizabeth	177	161



Airports

Harrisburg Intl.	18	19
Newark Liberty Intl.	99	96
Philadelphia Intl.	106	97
Baltimore Washington Intl.	194	182



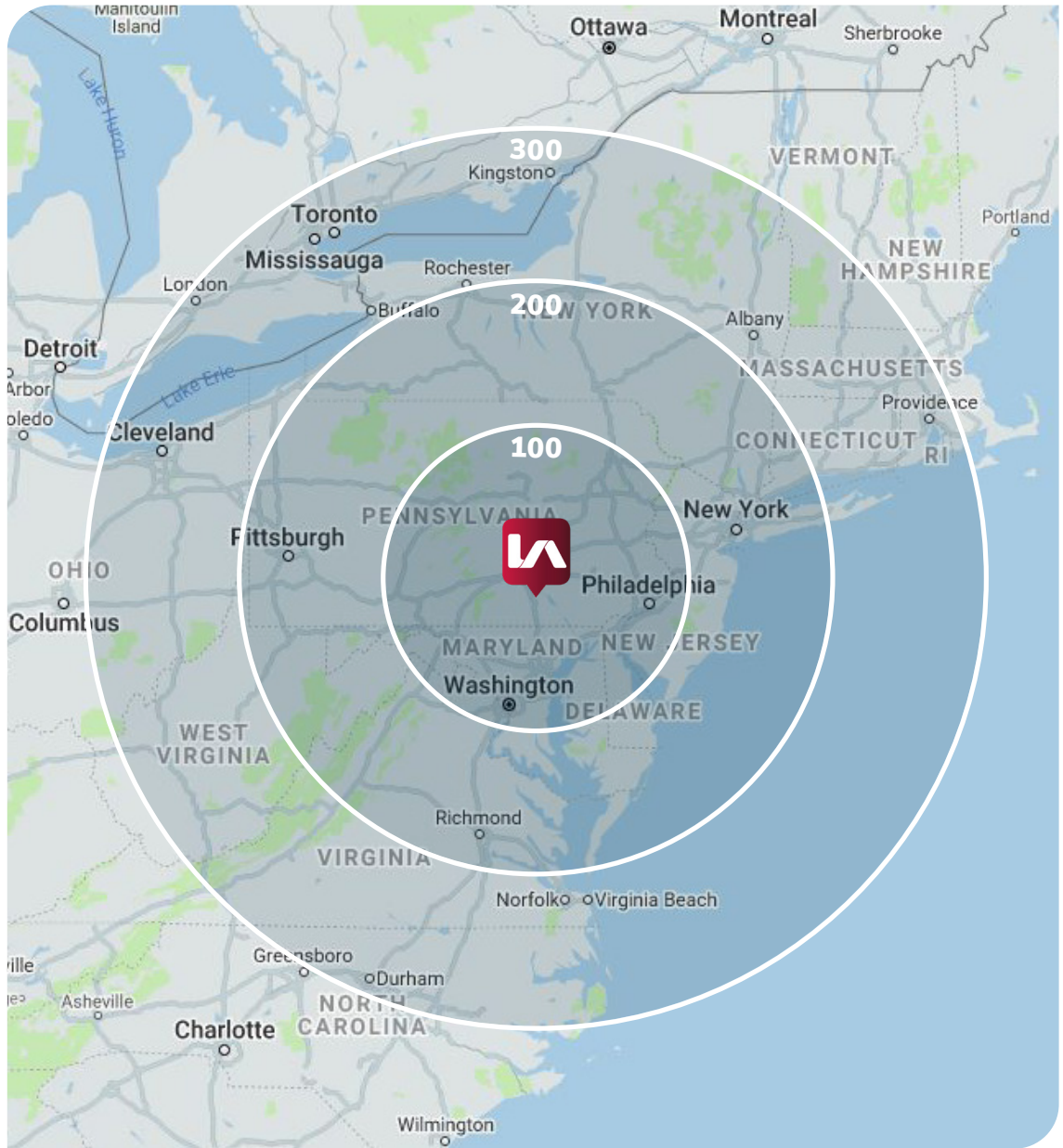
Parcel Facilities

UPS Middletown, PA	14	21
FedEx Middletown, PA	15	20
USPS Lancaster, PA	17	21
FedEx Lewisberry, PA	28	34



Intermodal Yards

Norfolk Southern - Rutherford Harrisburg, PA	21	28
Norfolk Southern - Lucknow Harrisburg, PA	28	32
Norfolk Southern Reading, PA	49	52
CSX Intermodal Chambersburg, PA	78	89



Ownership Group:



Lee Fittipaldi  
lfittipaldi@lee-associates.com  
D 610.215.2320

Kim Jacobsen  
kjacobsen@lee-associates.com  
D 610.400.0501

Selwyn Simpson  
ssimpson@lee-associates.com  
D 610.947.1952

All information furnished regarding property for sale, rental or financing is from sources deemed reliable, but no warranty or representation is made as to the accuracy thereof and same is submitted subject to errors, omissions, change of price, rental or other conditions prior to sale, lease or financing or withdrawal without notice. No liability of any kind is to be imposed on the broker herein.