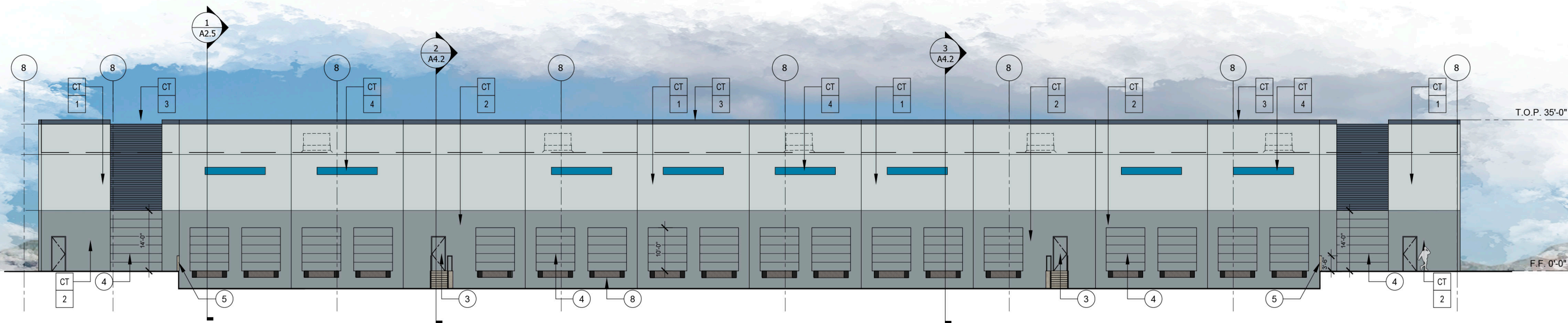
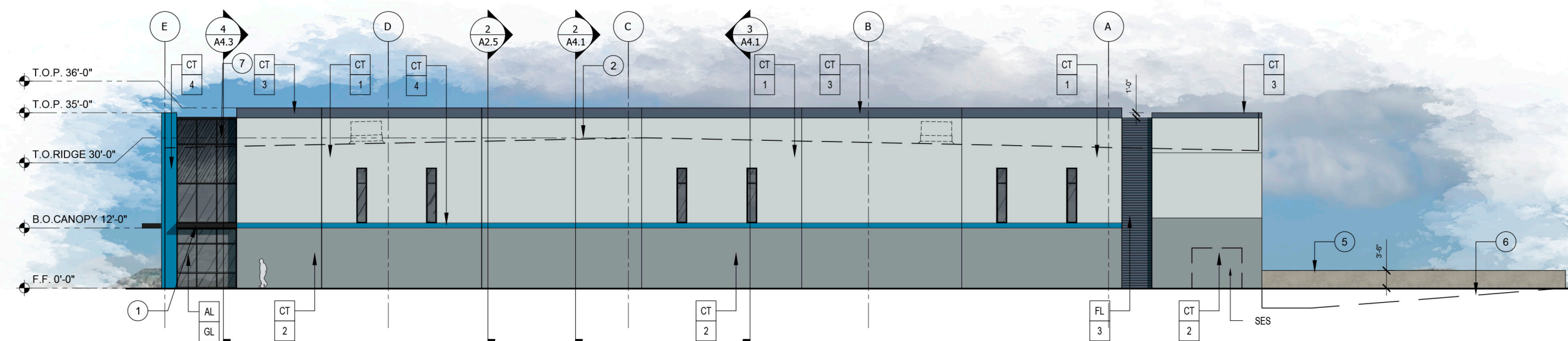


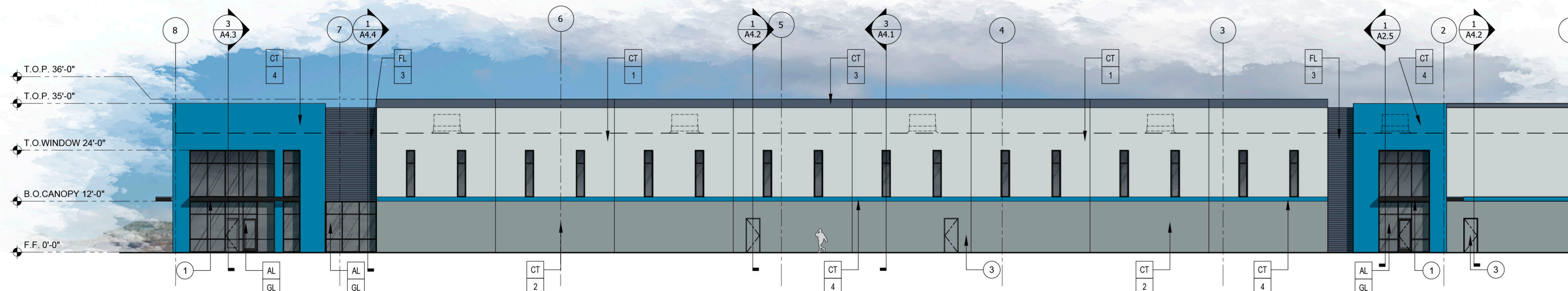
1 BUILDING 2 - NORTH ELEVATION  
SCALE: 1/16" = 1'-0"



2 BUILDING 2 - EAST ELEVATION  
SCALE: 1/16" = 1'-0"



3 BUILDING 2 - SOUTH ELEVATION  
SCALE: 1/16" = 1'-0"



4 BUILDING 2 - WEST ELEVATION  
SCALE: 1/16" = 1'-0"

**MATERIALS**

- CT CONCRETE TILT PANEL PAINTED
- FL CONCRETE TILT FORM LINER PANEL PAINTED - PATTERN 1723 WYOMING FLUTE BY SPEC FORMLINERS, OR EQUAL.
- SC 12" STEEL CHANNEL PAINTED

**STOREFRONT**

- AL DK BRONZE ANODIZED ALUMINUM
- GL SOLAR BAND "GRAY"

**PAINT SCHEDULE**

- 1 SHERWINN WILLIAMS - SW 6232 "MISTY" LRV - 64
- 2 SHERWINN WILLIAMS - SW 7664 "STEELY GRAY" LRV - 30
- 3 SHERWINN WILLIAMS - SW 2740 "MINERAL GRAY" LRV - 10
- 4 SHERWINN WILLIAMS - SW 6796 "BLUE PLATE" LRV - 17
- 5 SHERWINN WILLIAMS - SW 6990 "CAVIAR" LRV - 3

**KEY NOTES**

- 1 STEEL CANOPY ELEMENT PAINTED "P5".
- 2 ROOF LINE BEYOND.
- 3 HOLLOW METAL DOOR PAINTED TO MATCH ADJACENT WALL, TYPICAL.
- 4 OVERHEAD DOOR PAINTED TO MATCH ADJACENT WALL, TYPICAL.
- 5 REQUIRED FALL PROTECTION TO BE PROVIDED @CONC. WALL, TYPICAL.
- 6 TRUCK WELL BEYOND
- 7 SPANDREL GLASS LOCATION
- 8 IN-FLOOR OR EDGE-OF DOCK LEVELER - SEE FLOOR PLAN FOR LOCATIONS

**PAINTING NOTES**

- A. SEALANTS FOR THE PROJECT TO MATCH ADJACENT MATERIAL COLORS.
- B. PAINTER TO PREPARE SAMPLES WITH APPROPRIATE COLOR TO BE APPROVED BY OWNER PRIOR TO APPLICATION ON BUILDING FACADES.

**GENERAL NOTES**

- A. ALL ROOF DRAINAGE TO BE INTERNALIZED WITHIN BUILDING WALLS
- B. HVAC EQUIP. TO BE FULLY SCREENED
- C. ALL STEEL CANOPY FACES TO BE SMOOTH. ROLLER/FABRICATION MARKS FROM TUBE PRODUCTION TO BE FILLED AND SANDED SMOOTH.



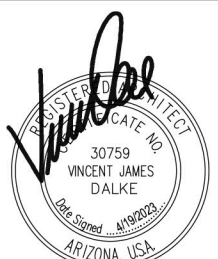
2039 E RICE DR., TEMPE  
AZ, 85283  
480-589-3793  
VINCE@DALKEDESIGNGROUP.COM

C.O.P. PROJECT NUMBERS:  
KIVA: 21-4997  
SDEV: 2100494  
PAPP: 2108583  
PRLM: 2204891  
Q.S.: Q5-31

**JONES INDUSTRIAL**  
 18TH STREET AND JONES  
 PHOENIX, AZ

NUMBER	REVISION	DATE

SEAL



SHEET TITLE  
BUILDING 2 - ELEVATIONS

ISSUE DATE 4/19/2023  
DRAWN DMP  
CHECKED BY VJD  
PROJECT NUMBER -

DRAWING NO.

**A2.4**

REV -