



TO LET

1,444 SQ FT
(134.15 SQ M)

Manufacturing / Processing Unit

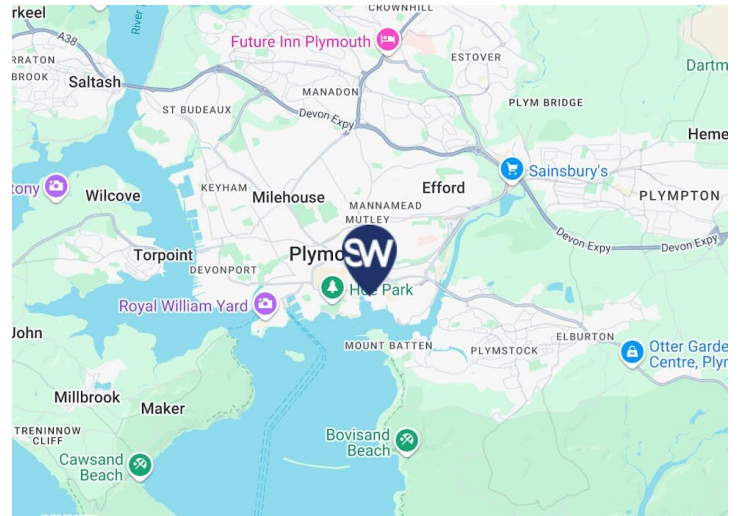
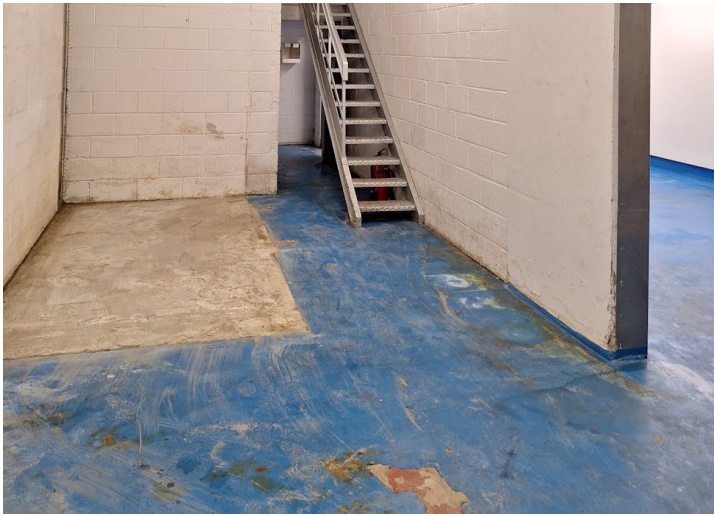
- Central quayside location

- New Lease

- Rent - £10,000pa

Unit 10

Plymouth Fisheries Hub, Plymouth, PL4 0LH



Summary

Available Size	1,444 sq ft / 134.15 sq m
Rent	£10,000 per annum
Rates Payable	£5,988 per annum
Service Charge	Upon Enquiry
Estate Charge	The lease is on effective FRI terms with the tenants contributing to a service charge for the management of the estate
EPC	Upon enquiry

Description

Mid terrace industrial / production units forming part of the Fish Quay. The units are located inside a fenced estate fronting the commercial Fish Quay at Sutton Harbour. Other units are occupied by business related to the fishing or maritime industries.

The unit benefits from warehouse lighting, roller shutter door, washdown/drainage and 3.5 metre eaves. Parking spaces are available by way of a separate agreement.

Location

Accessed via Lockyers Quay Road, the units are located in Sutton Harbour, in a unique position adjacent to the Plymouth's commercial fishing quay.

Terms

Available by way of a new full repairing and insuring agreement, subject to a contribution to service charge for the maintenance of the common parts and areas, at an initial rent of £10,000pax



Mark Slade

01752 968412 | 07771 727819

Mark.Slade@sw.co.uk

