

Venture Point

6226 & 6260 E. Tropical Parkway
Las Vegas, NV 89115

Industrial for Lease

±11,460-22,920 SF



Leasing Information:
702.221.8226

Lincoln

Craig Summers
NRE: S.0077796
Vice President
(702) 487-9811
Craig.Summers@lpc.com

Mel Koich
NRE: BS.0040505
Senior Vice President
(702) 561-8787
Mel.Koich@lpc.com

4755 Dean Martin Drive
Las Vegas, NV 89013

www.lpc.com

Venture Point

6226 & 6260 E. Tropical Parkway | Las Vegas, NV 89115

Industrial for Lease

±11,460-22,920 SF



Craig Summers
(702) 487-9811
Craig.Summers@lpc.com

Mel Koich
(702) 561-8787
Mel.Koich@lpc.com

Lincoln

Venture Point

6226 & 6260 E. Tropical Parkway | Las Vegas, NV 89115

Industrial for Lease

±11,460-22,920 SF



Property Overview

- ±11,460-22,920 SF Industrial Space for Lease
- Zoned M-2

Highlights

- Office with mezzanine storage
- 24' clearance height
- Proximity to I-15
- Located next to Las Vegas Motor Speedway
- Off new E. Tropical Pkwy exit from I-15
- 15 minutes from Las Vegas Strip and Harry Reid International Airport

Craig Summers

(702) 487-9811

Craig.Summers@lpc.com

Mel Koich

(702) 561-8787

Mel.Koich@lpc.com

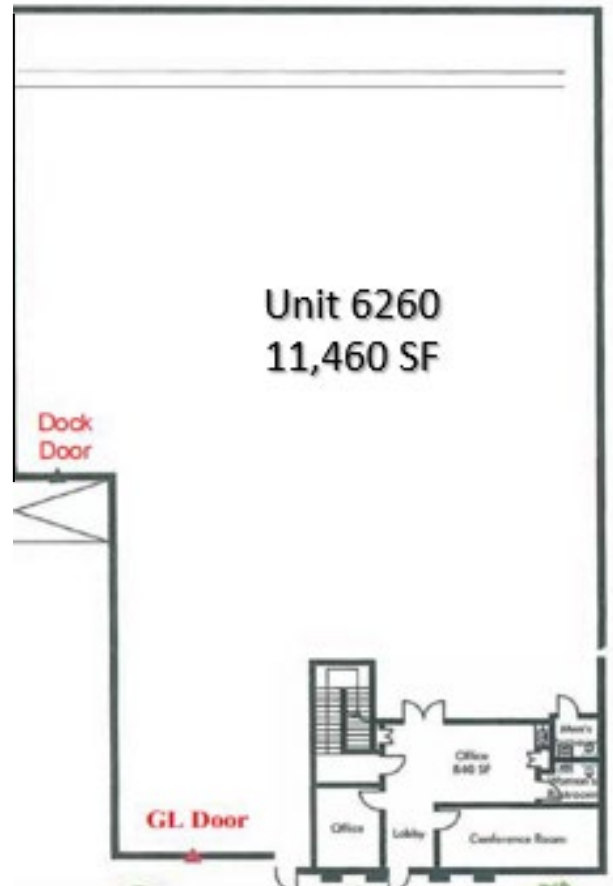
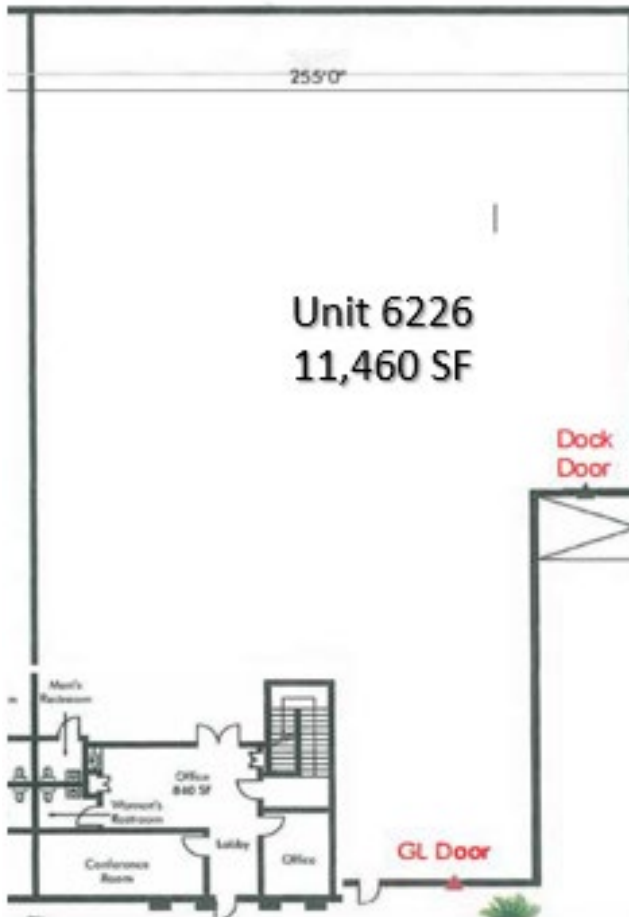
Lincoln

Venture Point

6226 & 6260 E. Tropical Parkway | Las Vegas, NV 89115

Industrial for Lease

±11,460-22,920 SF



Building	Total SF	Office SF	Warehouse SF	Mezzanine SF	Clearance Height	Dock	Grade	Rate
6226	±11,460	±840	±9,820	±800	24 ft	1	1	\$1.30 MG
6260	±11,460	±840	±9,820	±800	24 ft	1	1	\$1.30 MG

Craig Summers
 (702) 487-9811
 Craig.Summers@lpc.com

Mel Koich
 (702) 561-8787
 Mel.Koich@lpc.com

Lincoln

Venture Point

6226 & 6260 E. Tropical Parkway | Las Vegas, NV 89115

Industrial for Lease

±11,460-22,920 SF



Craig Summers
(702) 487-9811
Craig.Summers@lpc.com

Mel Koich
(702) 561-8787
Mel.Koich@lpc.com

Lincoln