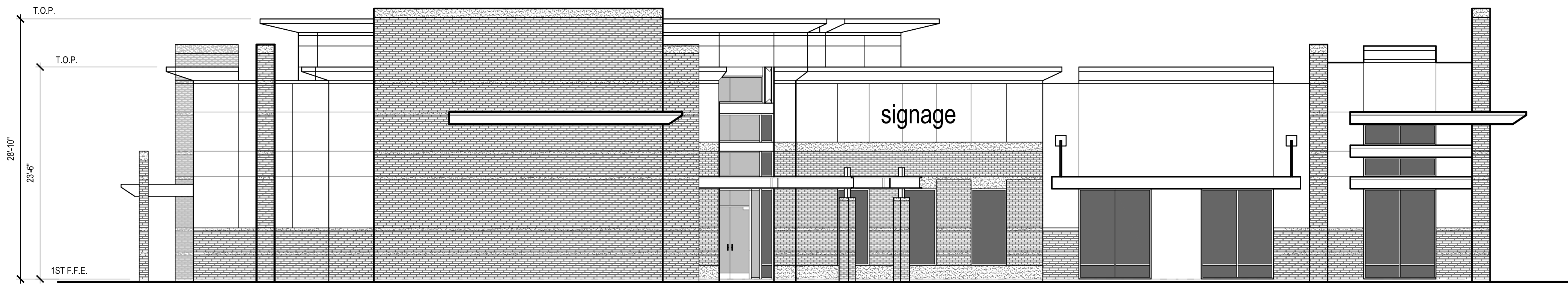
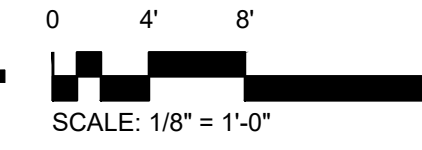
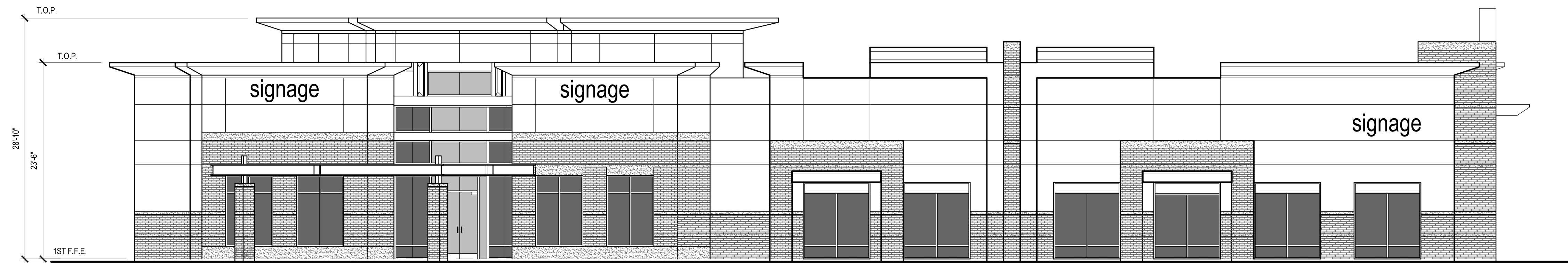
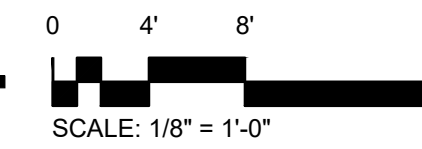


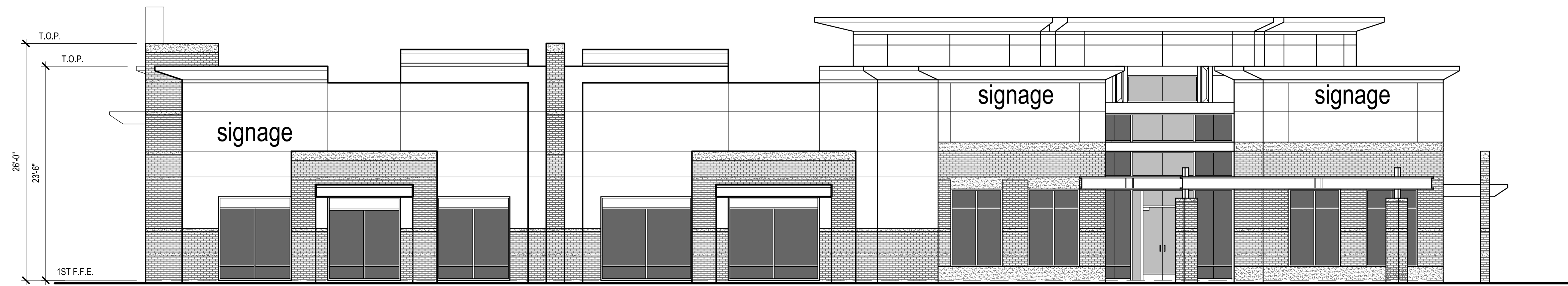
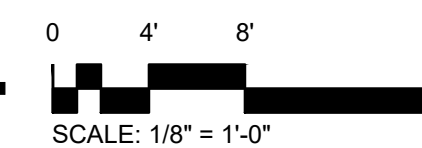
① WEST ELEVATION



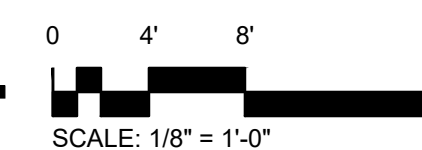
② NORTH ELEVATION



③ EAST ELEVATION



④ SOUTH ELEVATION



GENERAL NOTES

1. T.O.P. = TOP OF PARAPET ELEVATION.
2. F.F.E. = FINISH FLOOR ELEVATION.
3. ALL KEY NOTES ARE TYPICAL.
4. ALL MATERIAL AND PAINT COLOR CHANGES TO OCCUR AT INSIDE CORNERS U.N.O.
5. ALL PAINT FINISHES ARE TO BE FLAT UNLESS NOTED OTHERWISE.
6. ALL ROOF MOUNTED EQUIPMENT TO BE SCREENED BY BUILDING PARAPET.
7. DUAL PANE UNITS TO BE TEMPERED

GLAZING SCHEDULE

- GLAZING: VITRO (PPG) SOLARBAN 67 (2) SOLARGRAY + CLEAR GLASS 1" SYSTEM SET IN 2" X 4" 1/2" ALUM. STOREFRONT SYSTEM, FRONT SET, PTD. W/ FLUOROPON CHAMPAGNE BRONZE. SHGC= .20 U-VALUE= .29
- GLAZING: VITRO (PPG) SOLARBAN 67 (2) CLEAR + CLEAR GLASS 1" SYSTEM, FRONT SET, PTD. W/ FLUOROPON CHAMPAGNE BRONZE. SHGC= .29 U-VALUE= .29
- VITRO SOLARGREY TINTED GLAZING OR EQUAL. 1/4" SOLARGRAY W/ SPANDREL COATING ON (2) SIDE, 1/4" UNIT. CONFIRM COLOR SELECTION WITH ARCHITECT. FRONT LOADED 2 1/4" X 4 3/4" ALUM. STOREFRONT, FACE MOUNTED W. BUTT JOINTS AT VERTICAL FIELD JOINTS, CAPTURED ENDS. STOREFRONT COLOR: CHAMPAGNE BRONZE TO MATCH ADJACENT STOREFRONT

COLOR/ MATERIAL LEGEND

- MAIN BODY LIGHT COLOR PER COLOR/ MATERIAL SCHEDULE (A)
- MAIN BODY MEDIUM COLOR PER COLOR/ MATERIAL SCHEDULE (B)
- THIN BRICK VENEER PER COLOR/ MATERIAL SCHEDULE (C)
- STONE VENEER PER COLOR/ MATERIAL SCHEDULE (D)
- ALUMINUM IN-FILL PANELS AND MULLIONS PER COLOR/ MATERIAL SCHEDULE (E)

COLOR/ MATERIAL SCHEDULE

- (A) PAINTED CONCRETE- COLOR: SW 7036, ACCESSIBLE BEIGE (WHITE- MAIN BODY)
- (B) PAIATED CONCRETE- COLOR: TONY TAUPE (MEDIUM- MAIN BODY)
- (C) THIN BRICK VENEER- ENDICOTT- 60% ORLEANS SANDS AND 40% ORLEANS SANDS HERITAGE WITH RAKED JOINTS OF ORCO GROUT COLOR "OBP KHAKI"- CONTACT THOMPSON BUILDING MATERIALS- 619-616-6677
- (D) STONE VENEER- EL DORADO STONE EUROPEAN LEDGE, COLOR: LINEN
- (E) ALUMINUM IN-FILL PANELS, MULLIONS AND CANOPIES TO BE PAINTED VALSPAR FLUOROPON CLASSIC II CHAMPAGNE BRONZE 399X493

KEYNOTES

- ① BUILDING ADDRESS LOCATION, 12" HIGH MIN. PER CITY OF BEAUMONT STANDARDS. COLOR: MATTE BLACK. CONTRACTOR TO CONFIRM W. FIRE DEPT.
- ② VERTICAL SILICONE BUTT JOINT
- ③ STEEL MAN DOOR PER DOOR SCHEDULE, PTD.
- ④ MEDIUM STYLE ALUMINUM STOREFRONT DOOR PER DOOR SCHEDULE.
- ⑤ 3/4" V-GROOVE REVEAL. SEE DETAIL (4) AD4
- ⑥ 3/4" DEEP 4" WIDE REVEAL. SEE DETAIL (8) AD4
- ⑦ ARCHITECTURAL ACCENT. REINFORCED COATED FOAM TO MATCH ADJACENT STUCCO
- ⑧ LINE OF ROOF BEYOND
- ⑨ PROJECT SIGNAGE. UNDER A SEPARATE PERMIT
- ⑩ ROOF DRAIN LINES BEYOND WALL (DASHED). SEE PLUMBING DRAWINGS
- ⑪ OVERFLOW DRAIN THRU WALL. SEE DETAIL (4) ADS



KIRK MOELLER ARCHITECTS, INC.
2888 LOKER AVE. EAST, STE 220
CARLSBAD, CA 92010
KIRK@KMAARCHITECTSINC.COM
760-814-8128

ALL IDEAS, DESIGNS AND DIRECTION INDICATED WITHIN THESE DRAWINGS ARE THE PROPERTY OF KIRK MOELLER ARCHITECTS, INC. AND ARE INTENDED TO BE ASSOCIATED WITH THIS SPECIFIC PROJECT ONLY AND SHALL NOT OTHERWISE BE USED FOR ANY PURPOSE WHATSOEVER WITHOUT THE WRITTEN CONSENT OF THE KIRK MOELLER ARCHITECTS, INC. THERE SHALL BE NO CHANGES OR DEVIATIONS FROM THESE DRAWINGS OR ACCOMPANYING SPECIFICATIONS WITHOUT THE WRITTEN CONSENT OF THE ARCHITECT.

SUNDANCE CORPORATE CENTER
BUILDINGS E,F,H,J - COLD SHELL BUILDING
HIGHLAND SPRINGS AVE.
BEAUMONT, CA 92220

Date: 9-13-23

Project: SUNDANCE BLDGS. E,F,H,J

File: A3.1E-F

Revisions:

Sheet Title:
BUILDING ELEVATIONS

Sheet Number:

A3.1E-F