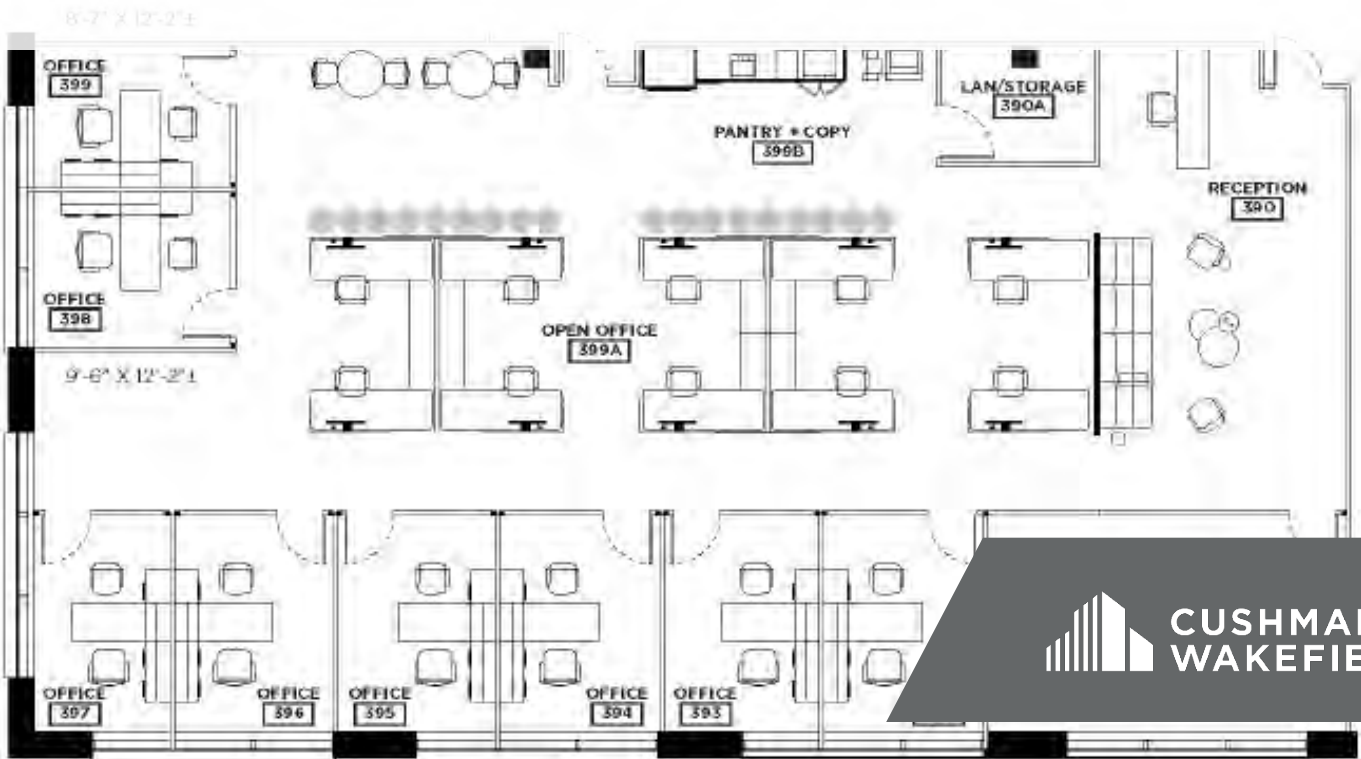




PARKWOOD PHASE II

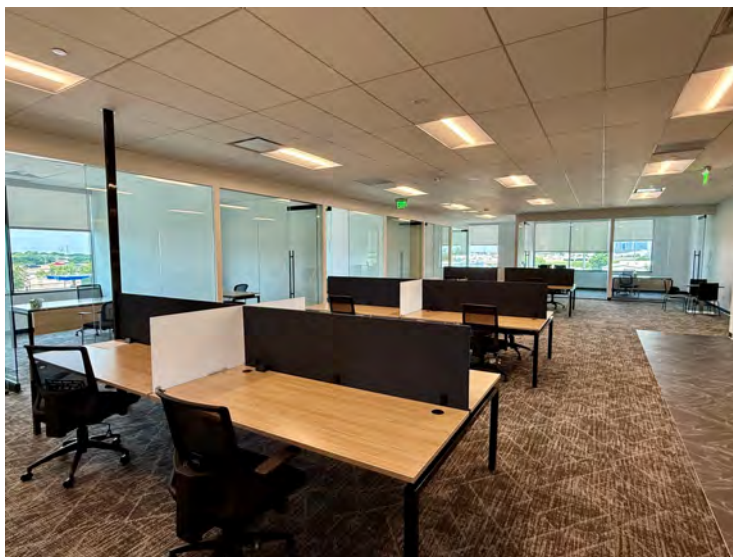
3960 DALLAS PKY, PLANO, TX 75093

4,202 RSF | SUITE 390



SPACE HIGHLIGHTS

- Suite 390 - 4,202 RSF
- LED 1/31/2028
- Asking Rent: \$39.00 NNN (\$10.10) + E (\$1.85)
- Brand new Spec Suite with above standard finishes and fully furnished
- 8 private offices, conference room, reception, server/storage, open kitchen and 14 workstations
- Parking: 13 garage spaces and 8 surface spaces (free of charge)



FOR SUBLEASE

PARKWOOD PHASE II

3960 DALLAS PKY, PLANO, TX 75093

4,202 RSF | SUITE 390



BUILDING HIGHLIGHTS

- New Class A Construction
- Building Completed in 2024
- Tenant Lounge / Café, Conference Center, Dining Patio, Pickleball Court, Fitness Center
- Walkable Restaurants
- Easy access off DNT



FOR SUBLEASE

PARKWOOD PHASE II
3960 DALLAS PKY, PLANO, TX 75093

4,202 RSF | SUITE 390



Travis Boothe

+1 972 663 9843
travis.boothe@cushwake.com

Alexandra Boury

+1 972 663 9659
alexandra.boury@cushwake.com

