



FOR LEASE



## 2ND-GEN RESTAURANT AT THE STREETS

**2nd-Generation Restaurant Space with Outdoor Seating**

± 6,989 SF | Call for Details

**2295 NE Allie Ave, Hillsboro, OR 97124**

- The Streets is a premier open air center providing an essential shopping experience to Hillsboro and the surrounding communities
- Anchored by REI, the center boasts national and local retailers, outstanding food operators, and everyday services.
- 867 Space Parking Structure—free patron parking and grade level parking.
- Planned Development: **Broadstone Tanasbourne** – A New Mixed-Use Housing Development with 308 Apartments and ±5,000 SF of Ground-Floor Retail
- FE&E Negotiable

**MICHELLE D. ROZAKIS**

Principal Broker | Licensed in OR

503-222-1195 | [mrozakis@capacitycommercial.com](mailto:mrozakis@capacitycommercial.com)

**NICHOLAS G. DIAMOND**

Principal Broker | Licensed in OR & WA

503-222-2655 | [ndiamond@capacitycommercial.com](mailto:ndiamond@capacitycommercial.com)

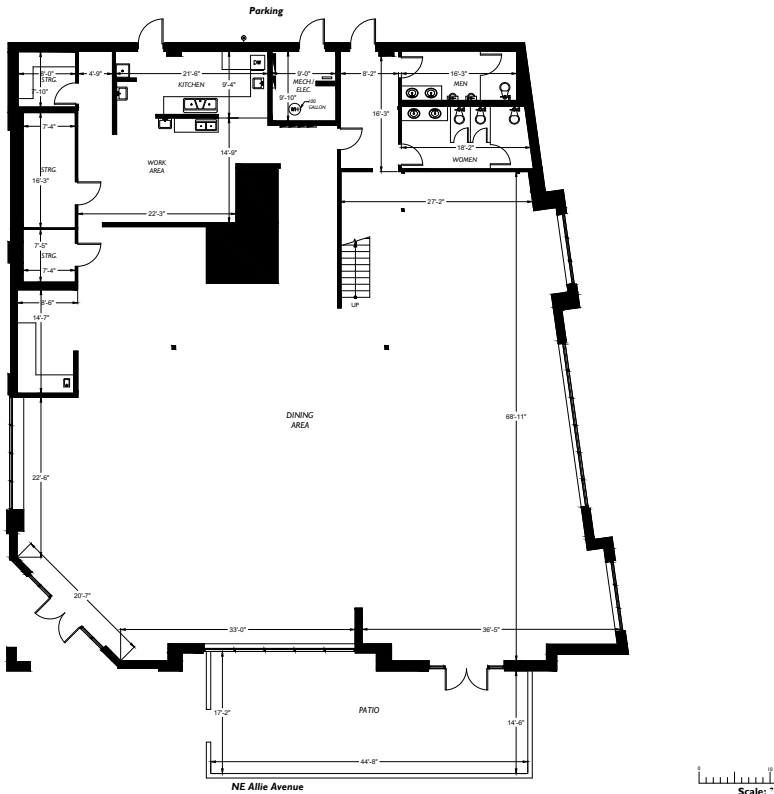


PROPERTY SUMMARY



FOR LEASE

Featured Improvements Underway



PROPERTY DETAILS

Address	2295 NE Allie Ave, Hillsboro, OR 97124
Available Space	6,989 SF
Lease Rate	Call for Details
Use Type	Restaurant
Availability	Now

Location Features

- In the heart of a vibrant community centrally located between a strong office/tech community and an ever-growing residential community, this center offers a high level of visibility and foot traffic, with a diverse mix of service and retail tenants to draw in a broad range of shoppers.
- Patio space for outdoor seating
- Stand alone building with great visibility from NE Stucki Ave - ±7,360 ADTV\*

\*Average Daily Traffic Volume | Traffic Counts are Provided by REGIS Online at SitesUSA.com ©2024

Current Tenants

- REI
- Gap
- H&M
- American Eagle
- Banana Republic
- Bath & Body Works
- Buffalo Wild Wings
- Color Me Mine
- Killer Burger
- Legends Barbershop
- P.F Changs
- Sephora
- Victoria's Secret
- Corner Bakery
- Yummy Time
- The Lash Lounge
- lululemon

Neighborhood Scores



82

Walk Score®  
"Very Walkable"



87

Bike Score®  
"Very Bikeable"



40

Transit Score®  
"Some Transit"

Ratings provided by <https://www.walkscore.com>



# SITE PLAN





# SITE AERIAL MAP



\*Average Daily Traffic Volume | Traffic Counts are Provided by REGIS Online at SitesUSA.com ©2024  
Map data ©2024 Google Imagery ©2024, Airbus, CNES / Airbus, Maxar Technologies, Metro, Portland Oregon, Public Laboratory, State of Oregon, U.S. Geological Survey, USDA/FPAC/Geo