

# LAND FOR SALE

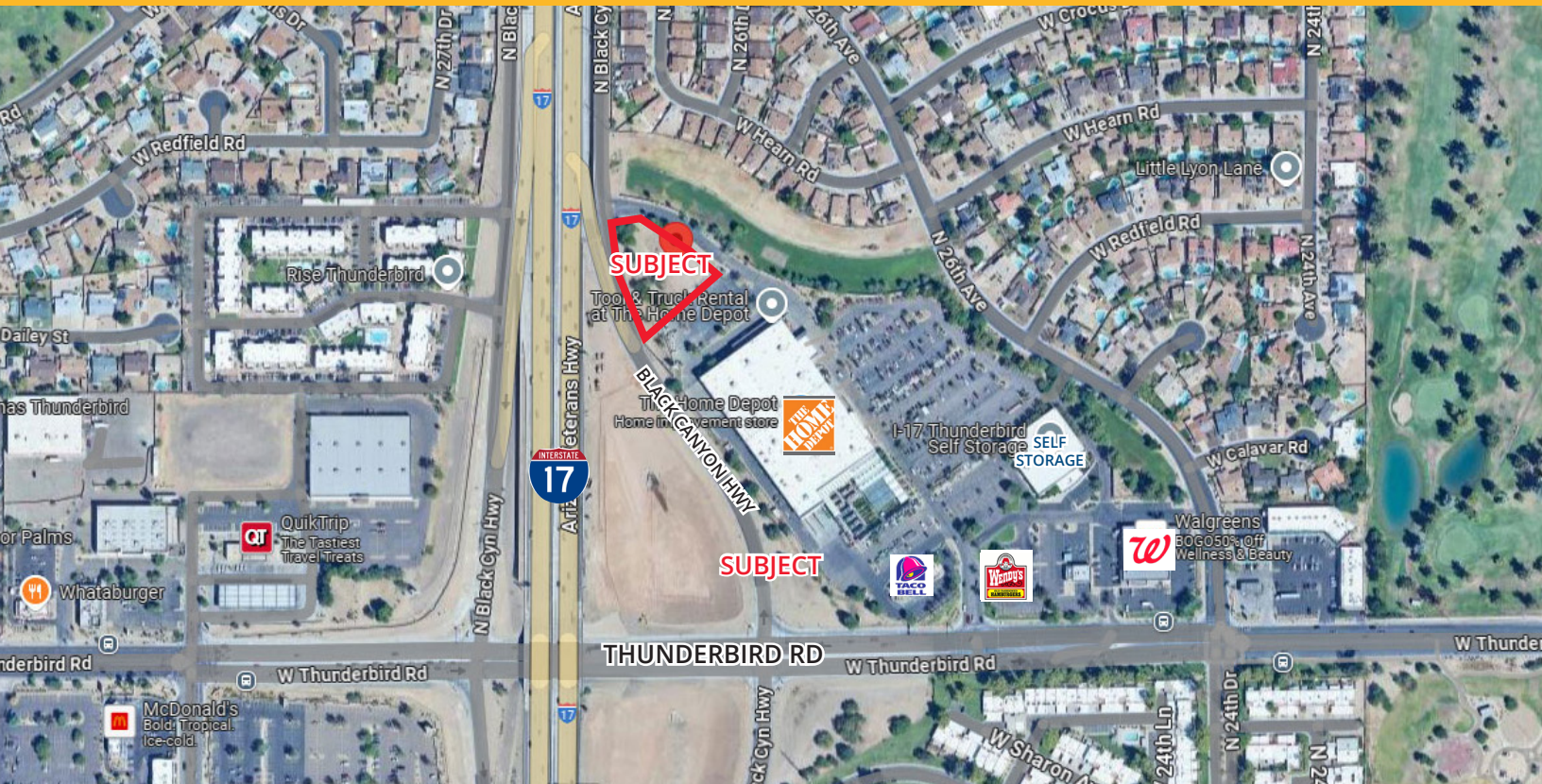
## 1.21 ACRES RETAIL LAND

### HOME DEPOT SHOPPING CENTER

2680 W. THUNDERBIRD RD., PHOENIX, AZ 85023

#### PROPERTY FEATURES:

- Black Canyon Highway Frontage
- 52,533 SF
- Zoned C-2- City of Phoenix

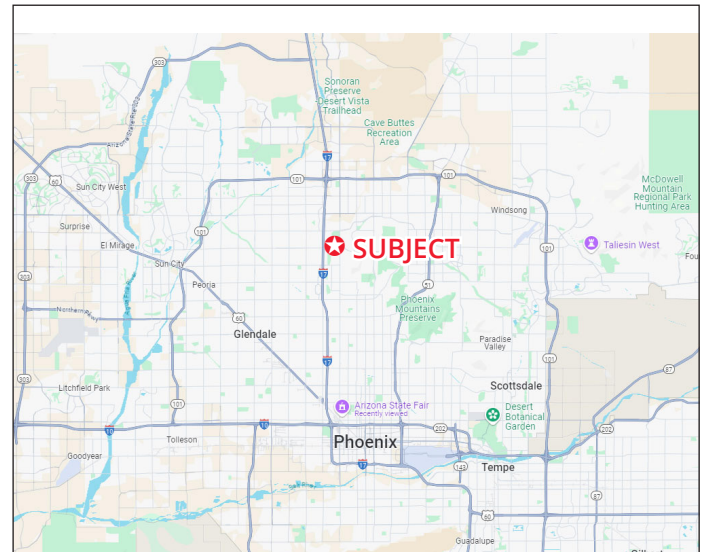


#### ADDITIONAL INFO:

- APN # 208-15-954
- 1.21 Acre Lot
- 52,533 SF Lot
- C-2 Zoning
- Price: \$1,575,990 (\$30 PSF)

Strong mix of national retailers surrounding the lot, bringing high traffic.

Situated within a vibrant and populous commercial hub



No warranty or representation is made to the accuracy of the foregoing information. Terms of sale or lease and availability are subject to change or withdrawal without notice.

**FOR MORE  
INFORMATION  
PLEASE  
CONTACT:**

**Chris Keeley**

President

480.363.9333 Mobile

chris.keeley@phxcb.com

22849 N. 19th Ave.

Phoenix, AZ 85027

623.516.7744 Office



# LAND FOR SALE

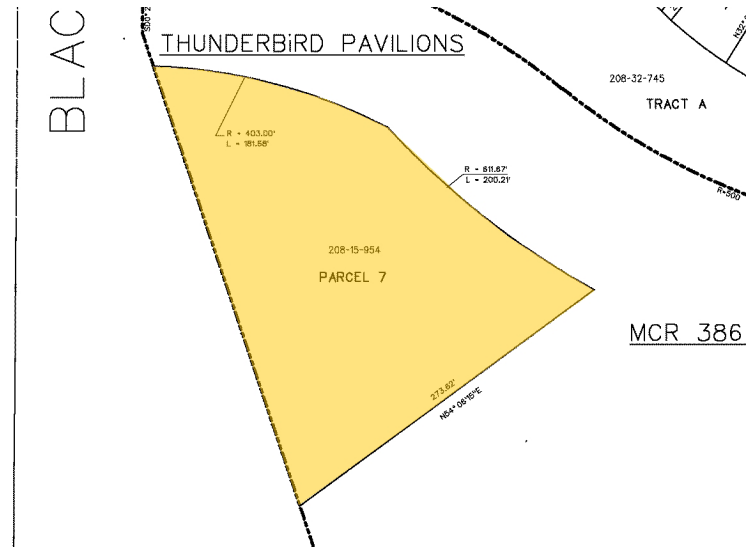
## 1.21 ACRES RETAIL LAND

### HOME DEPOT SHOPPING CENTER

2680 W. THUNDERBIRD RD., PHOENIX, AZ 85023

#### PROPERTY FEATURES:

- Black Canyon Highway Frontage
- 52,533 SF
- Zoned C-2- City of Phoenix



No warranty or representation is made to the accuracy of the foregoing information. Terms of sale or lease and availability are subject to change or withdrawal without notice."

**FOR MORE  
INFORMATION  
PLEASE  
CONTACT:**

**Chris Keeley**

President

480.363.9333 Mobile

chris.keeley@phxcb.com

22849 N. 19th Ave.

Phoenix, AZ 85027

623.516.7744 Office

