

Walzem Pad Sites

Walzem Rd, San Antonio, Tx.

PRELIMINARY

THIS DOCUMENT IS FOR INTERIM REVIEW AND NOT INTENDED FOR BIDDING, PERMIT OR CONSTRUCTION PURPOSES.

CHARLES W. POPE TX#13356

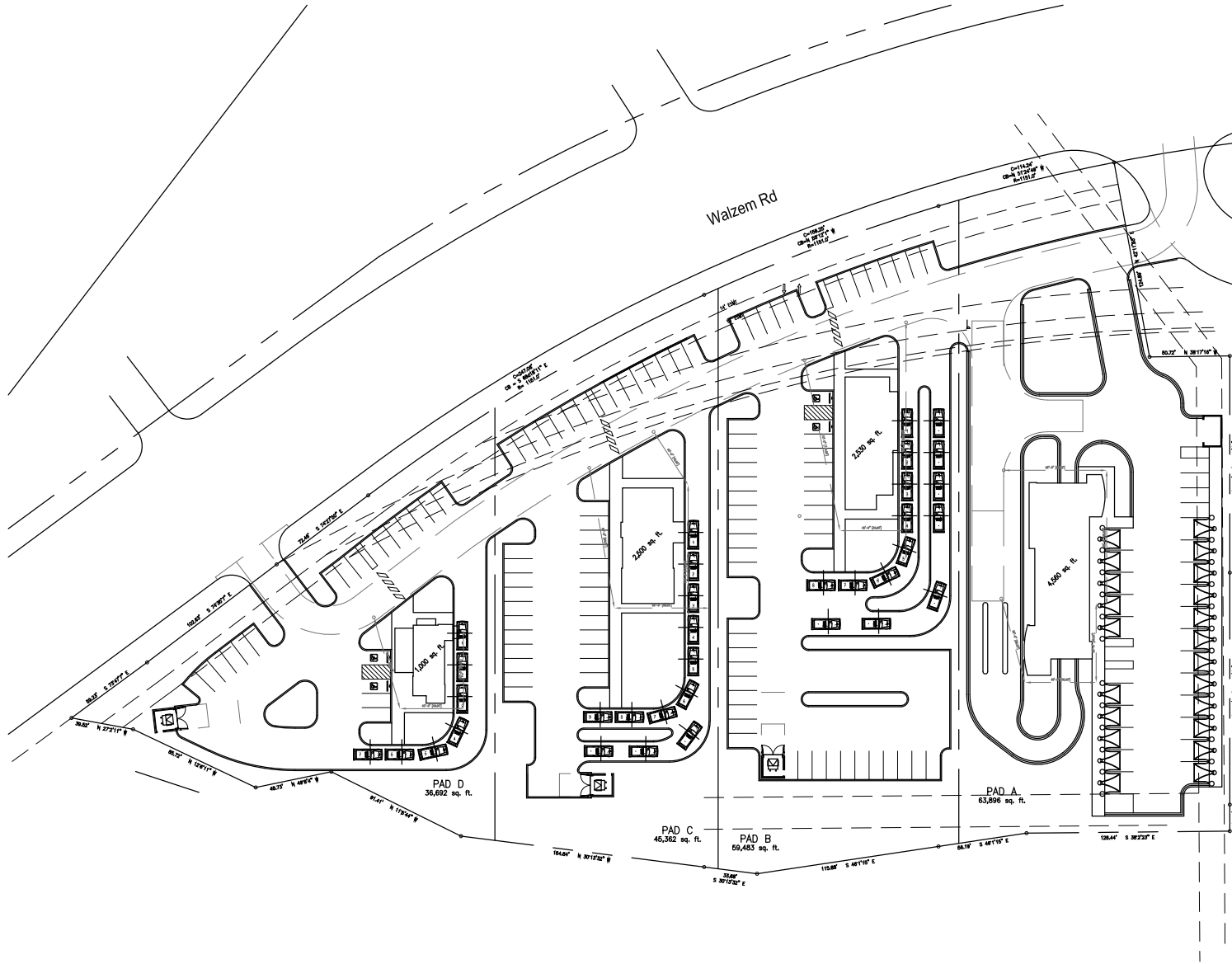
Date: 11.08.22

GENERAL NOTES:

- SURVEY: THIS DRAWING HAS NOT BEEN VERIFIED BY SURVEY OR LEGAL DESCRIPTION
- DETENTION: WATER QUALITY - DETENTION AND / OR FILTRATION HAS NOT BEEN RESEARCHED
- UTILITIES: AVAILABILITY OF ON-SITE UTILITIES HAVE NOT BEEN VERIFIED

PENDING ISSUES:

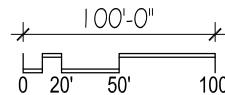
- BUILDING CODE
- ZONING
- COVENANTS
- EASEMENTS & SETBACKS
- CURB CUTS
- ENTRY "THROAT"
- SITE UTILITIES
 - GAS, ELEC, WATER, SEWER
- PARKING REQUIRED
- FIRE LANE
- FIRE HYDRANTS
- DETENTION
- TREES
- LANDSCAPE REVIEW
- PLAT STATUS
- TITLE COMMITMENT
- SITE TOPOGRAPHY
- CIVIL REVIEW
- SIGNAGE
- ROADWAY MEDIAN



PRELIMINARY SITE PLAN

SCALE: 1" = 100'-0"

Version **B**



CHARLES WILLIAM POPE
 & ASSOCIATES - ARCHITECTS
 TEL: (210) 349-6005