

3145 CLARK ROAD  
SUITE #102  
YPSILANTI, MICHIGAN



**SIGNATURE  
ASSOCIATES**  
KNOW SIGNATURE | KNOW RESULTS

**MEDICAL CONDO FOR SALE**  
4,000 Square Feet Available

**CLARK PROFESSIONAL OFFICE PLAZA II**



## PROPERTY FEATURES

- 4,000 square feet available
- Great entry-level (investment) owner-user medical/office condo
- Well-positioned, offering a turnkey investment opportunity
- Immediate proximity to Trinity Health Hospital and Ann Arbor, Washtenaw Community College, and Eastern Michigan University
- Easy access to U-23, strong regional connectivity and built-in patient base
- Fully leased to Probility Physical Therapy
- Features a reception/waiting area, private office, restroom, and large open workspaces
- Local condo association
- Sale Price: \$550,000 (\$137.50/sq. ft.)



For more information, please contact:

**JEFF HIGGINS**  
(248) 359 0650  
jhiggins@signatureassociates.com

**DRAKE FILIPPIS**  
(248) 799 3161  
dfilippis@signatureassociates.com

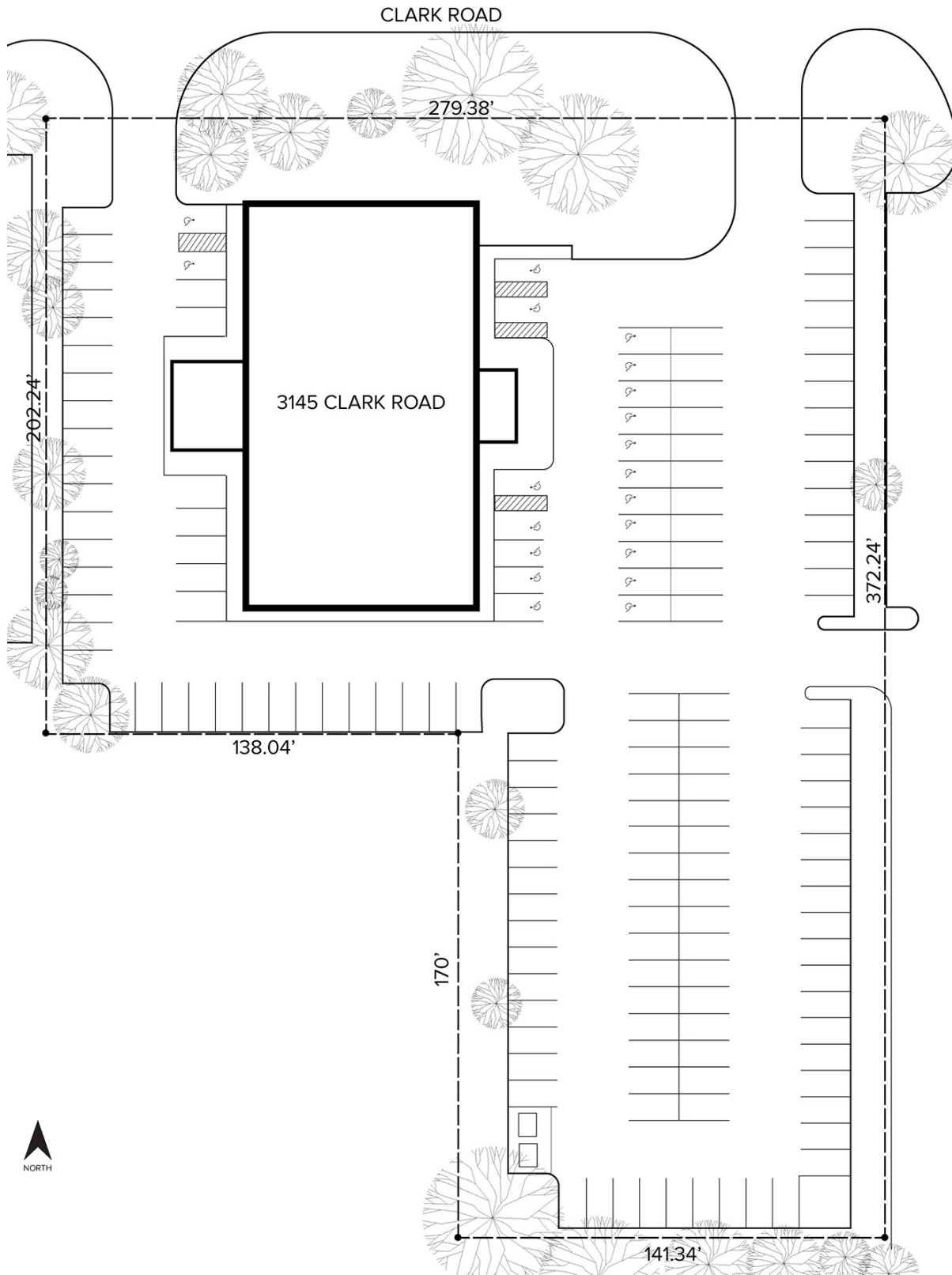
**SIGNATURE ASSOCIATES**  
One Towne Square, Suite 1200  
Southfield, MI 48076  
www.signatureassociates.com

# 3145 Clark Road – Ypsilanti, Michigan

## Medical Condo For Sale

4,000  
Square Feet  
AVAILABLE

### Site Plan



For more information, please contact:

**JEFF HIGGINS**  
(248) 359 0650  
jhiggins@signatureassociates.com

**DRAKE FILIPPIS**  
(248) 799 3161  
dfilippis@signatureassociates.com

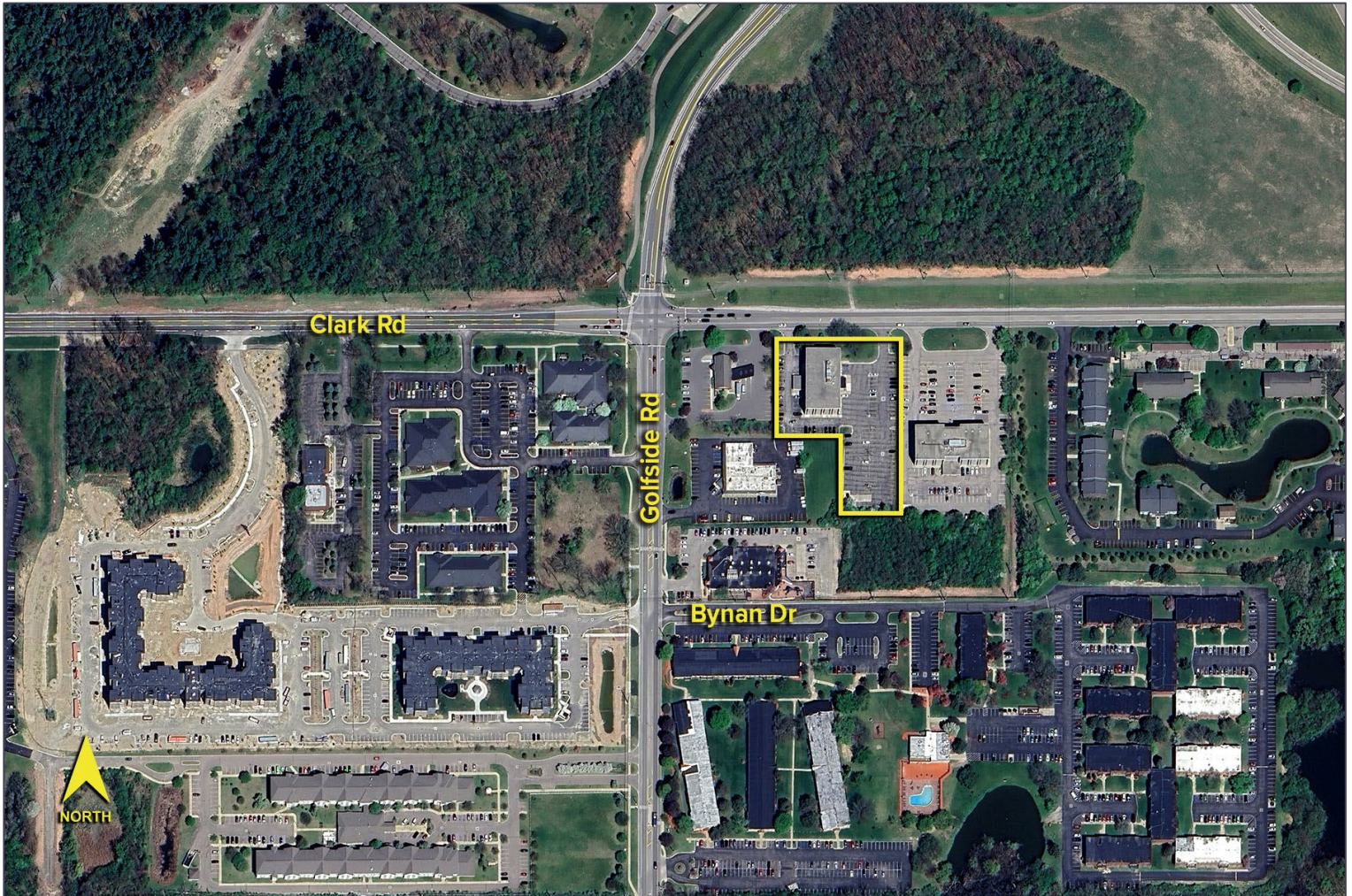
**SIGNATURE ASSOCIATES**  
One Towne Square, Suite 1200  
Southfield, MI 48076  
www.signatureassociates.com

# 3145 Clark Road – Ypsilanti, Michigan

## Medical Condo For Sale

4,000  
Square Feet  
AVAILABLE

Aerial



For more information, please contact:

**JEFF HIGGINS**  
(248) 359 0650  
jhiggins@signatureassociates.com

**DRAKE FILIPPIS**  
(248) 799 3161  
dfilippis@signatureassociates.com

**SIGNATURE ASSOCIATES**  
One Towne Square, Suite 1200  
Southfield, MI 48076  
www.signatureassociates.com