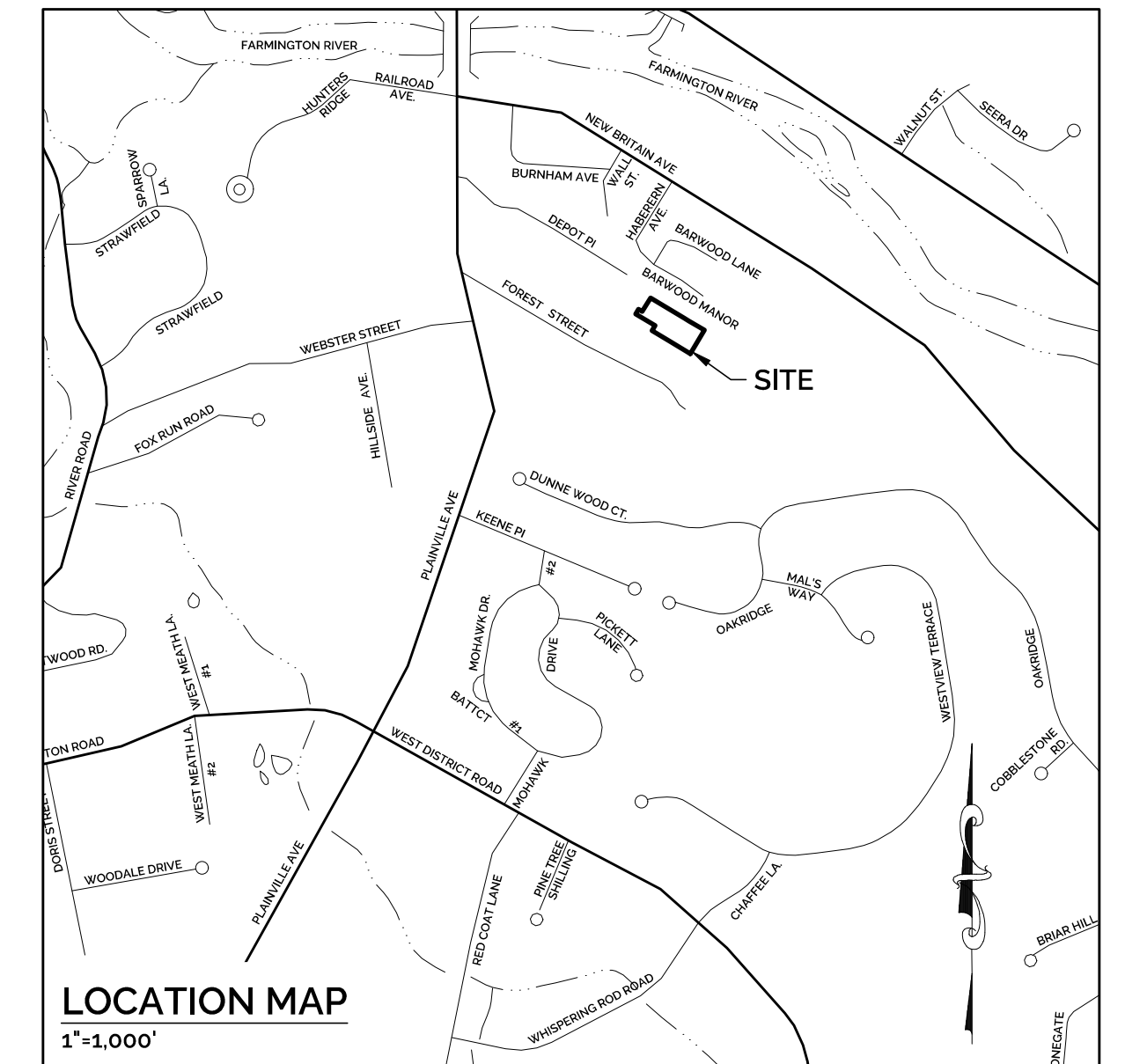


SITE DEVELOPMENT PLANS

NEW COMMERCIAL DEVELOPMENT

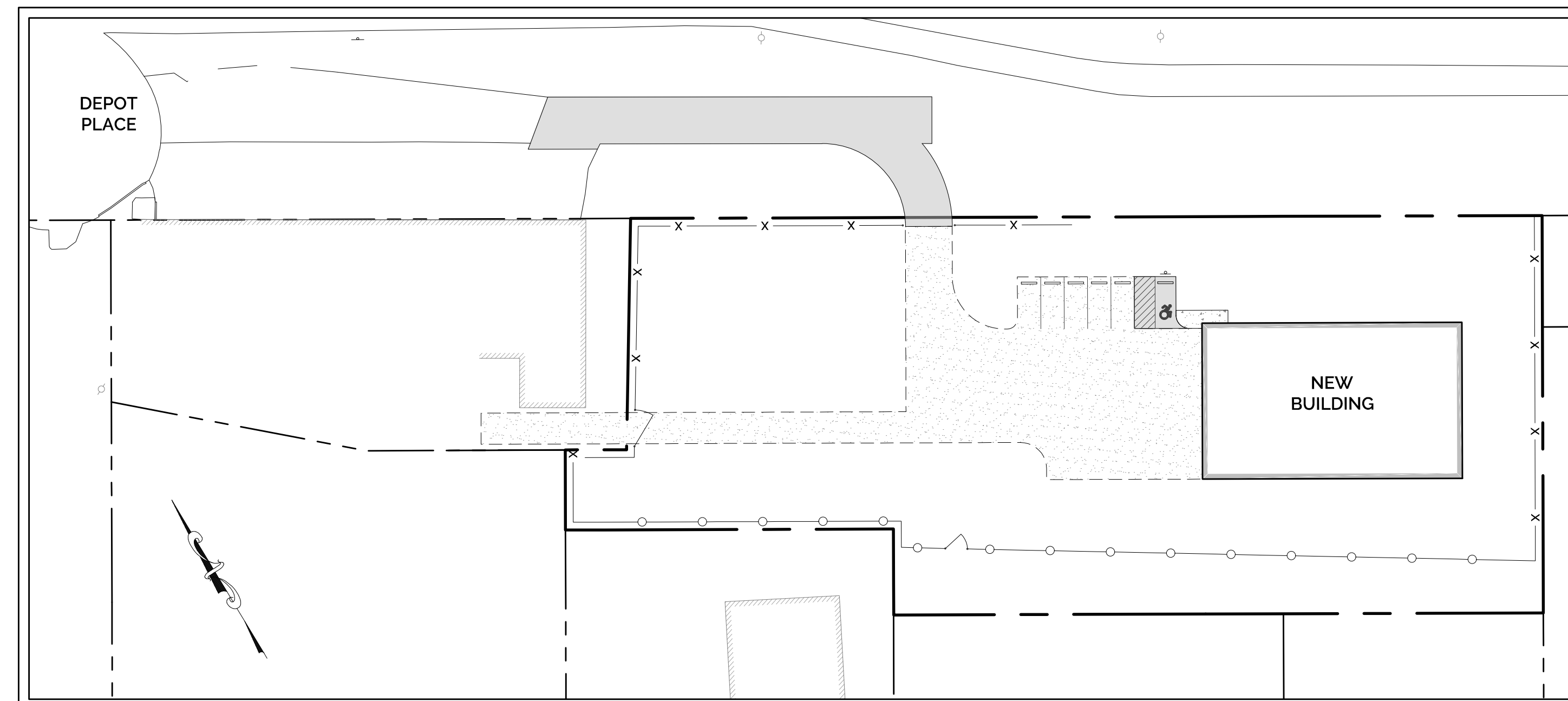
55 DEPOT PLACE, FARMINGTON, CT 06085

PREPARED FOR:
MORIN TREE SERVICE, LLC
 DATE: JULY 1, 2025



LEGEND

PROPERTY LINE	— — — — —
ADJOINER PROPERTY LINE	- - - - -
EASEMENT	— · — · — · — · —
BUILDING SETBACK LINE	— · — · — · — · —
TREELINE	— () — () — () — () —
VINYL FENCE	— [] — [] — [] — [] —
CHAINLINK FENCE	— X — X — X — X —
EX. INDEX CONTOUR	— 90 —
EX. INT. CONTOUR	— 89 —
EX. SPOT GRADE	— 89.5 —
PR. INDEX CONTOUR	— 225 —
PR. INT. CONTOUR	— 224 —
PR. SPOT GRADE	— 225.8 —
OVERHEAD ELECTRIC	— OHE —
UNDERGROUND ELECTRIC	— ETC —
TELEPHONE CABLE	— ETC —
SANITARY SEWER LINE	— SAN —
EXISTING STORM PIPE	— STM —
PROPOSED STORM PIPE	— [] — [] — [] — [] —
WATER LINE	— W — W —
DOMESTIC WATER SERVICE	— DW —
SILT FENCE	— SF —
UTILITY POLE	— () —
TO REMAIN	(TR)
TO BE REMOVED	(TBR)
IRON PIPE/IRON ROD	IP/IR



SHEET INDEX

DWG NO.	TITLE	SHEET NO.
XD-1	EXISTING CONDITIONS & DEMOLITION PLAN	1
SL-1	SITE LAYOUT PLAN	2
GDS-1	GRADING, DRAINAGE & STORMWATER MANAGEMENT PLAN	3
UT-1	UTILITY PLAN	4
SE-1	SOIL EROSION & SEDIMENT CONTROL PLAN	5
SEN-1	SOIL EROSION & SEDIMENT CONTROL NARRATIVE AND DETAILS	6
DT-1	SITE DETAILS	7
DT-2	DRAINAGE DETAIL	8
DT-3	UTILITY DETAILS	9
DT-4	STORMWATER MANAGEMENT DETAILS	10

APPLICANT & PROPERTY OWNER:
 MORIN TREE SERVICE, LLC
 295 PLAINVILLE AVE
 UNIONVILLE, CT 06085

CIVIL ENGINEER:
 H+H ENGINEERING ASSOCIATES, LLC
 SEAMUS MORAN, P.E.
 232 GREENMANVILLE AVENUE, SUITE 201
 MYSTIC, CT 06355

LAND SURVEYOR:
 SARGIS ASSOCIATES, INC.
 25 COMMERCE DRIVE
 CROMWELL, CT 06416

PREPARED BY:

 232 Greenmanville Ave.
 Suite 201
 Mystic, CT 06355
 860-980-8008
 www.hh-engineers.com

REFERENCE INFORMATION:

- THIS PLAN WAS COMPILED USING THE FOLLOWING REFERENCE INFORMATION:
 - A CLASS A-2, T-2 SURVEY MAP ENTITLED, "TOPOGRAPHIC SURVEY, 55 DEPOT PLACE, FARMINGTON, CONNECTICUT, PROPERTY OF MORIN TREE SERVICE, LLC," SCALE: 1"=20', DATED: JULY 7, 2025, PREPARED BY SARGIS ASSOCIATES INC.
 - A NINE SHEET PLAN SET WITH A COVER PAGE ENTITLED, "SPECIAL PERMIT DRAWINGS FOR 55 DEPOT PLACE, MORIN TREE SERVICE, LLC, IN THE TOWN OF FARMINGTON, HARTFORD COUNTY, CONNECTICUT," LAST REVISED MAY 7, 2020, PREPARED BY LANGAN ENGINEERING.
 - TOWN OF FARMINGTON, GIS WEBSITE.

GENERAL NOTES:

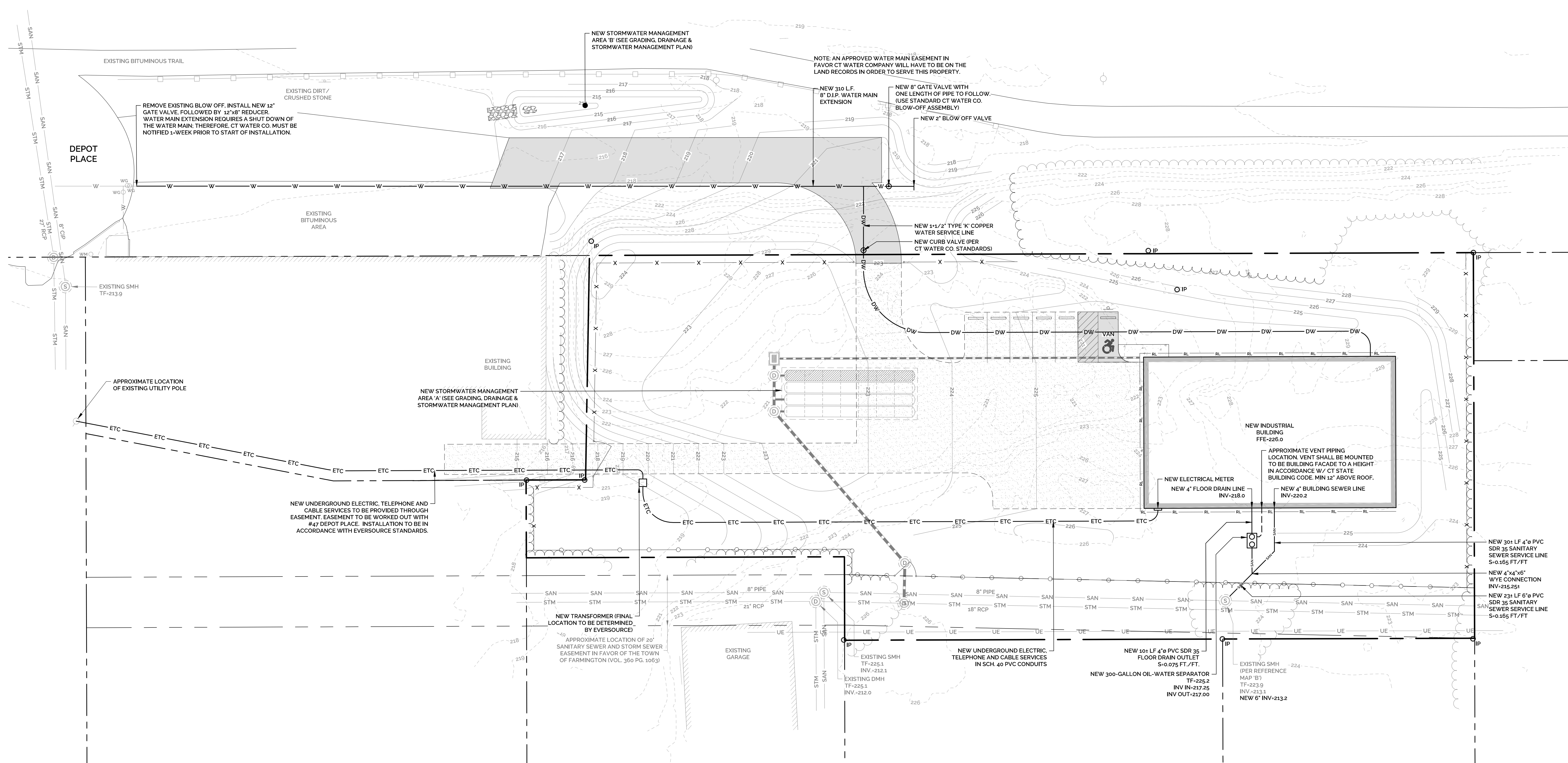
- THE SUBJECT PROPERTY WAS PREVIOUSLY TWO SEPARATE PROPERTIES IDENTIFIED AS 55 DEPOT PLACE (MAP 23 LOT 12B2) AND 8280 FOREST STREET (MAP 23 LOT 12-1). IT UNDERSTOOD THAT THE TWO PROPERTIES WERE LEGALLY MERGED AND THE MERGED PARCEL MAINTAINED THE ADDRESS 55 DEPOT PLACE.
- THE SUBJECT PROPERTY IS LOCATED WITHIN THE INDUSTRIAL 'C' ZONING DISTRICT. THE PROPERTY IS NOT LOCATED IN AN AQUIFER PROTECTION AREA, A DRINKING WATER WATERSHED, OR A FEMA FLOOD ZONE.
- WITH THE EXCEPTION OF A SHED, THE EXISTING PARCEL IS UNDEVELOPED. THE APPLICANT IS PROPOSING TO DEMOLISH THE EXISTING SHED AND CONSTRUCT A NEW ONE-STORY BUILDING WITH A GRAVEL PARKING LOT, UTILITY CONNECTIONS, STORMWATER MANAGEMENT IMPROVEMENTS AND LANDSCAPING IMPROVEMENTS. THE PROPOSED BUILDING WILL BE USED AS A WAREHOUSING FACILITY FOR THE STORAGE AND MAINTENANCE OF EQUIPMENT AND MATERIALS RELATED TO THE OWNER'S TREE SERVICE COMPANY. THE WAREHOUSING FACILITY IS PERMITTED BY SPECIAL PERMIT PER SECTION 14.8.4 OF THE ZONING REGULATIONS.
- THE PURPOSE OF THESE PLANS IS FOR REVIEW BY THE TOWN OF FARMINGTON PLANNING & ZONING COMMISSION FOR A SPECIAL PERMIT APPLICATION. THESE PLANS ARE FOR PERMIT PURPOSES ONLY AND ARE NOT TO BE USED FOR CONTRACT DOCUMENTS.
- THE PROPERTY WILL BE SERVED BY PUBLIC WATER AND PUBLIC SEWER.
- ELEVATIONS SHOWN HEREON ARE BASED ON NAVD-88 DATUM PER REFERENCE MAP 'A'.

CONSTRUCTION NOTES:

- THE CONTRACTOR SHALL CONTACT "CALL BEFORE YOU DIG" AT 800-922-4455 TO MARK OUT ALL UNDERGROUND UTILITIES A MINIMUM OF 3 BUSINESS DAYS PRIOR TO COMMENCING ANY CONSTRUCTION ACTIVITY. CONTRACTOR SHALL VERIFY ALL LOCATIONS, DIMENSIONS AND ELEVATIONS OF ALL UTILITIES PRIOR TO CONSTRUCTION.
- THE LOCATIONS OF SUBSURFACE UTILITIES SHOWN HEREON ARE APPROXIMATE. THE ACTUAL LOCATION OF SUBSURFACE UTILITIES MAY VARY FROM THOSE INDICATED AND ALL UNDERGROUND UTILITIES MAY NOT BE SHOWN.
- ALL PROPERTY LINES SHALL BE VERIFIED IN THE FIELD. NO PRIVATE PROPERTY SHALL BE DISTURBED UNLESS PROPER RIGHTS ARE OBTAINED PRIOR TO CONSTRUCTION.
- THE CONTRACTOR SHALL OBTAIN ALL REQUIRED PERMITS PRIOR TO CONSTRUCTION.
- THE CONTRACTOR SHALL OBTAIN, REVIEW AND ADHERE TO ALL REQUIREMENTS AND ANY CONDITIONS OF APPROVAL OF THE TOWN OF FARMINGTON.
- THE CONTRACTOR SHALL ADHERE TO ALL APPLICABLE TOWN OF FARMINGTON STANDARDS, REGULATIONS, POLICIES AND PRACTICES OF THE DEPARTMENT OF PUBLIC WORKS.
- THE PROPOSED BUILDINGS WILL HAVE A SLAB-ON-GRADE WITH FROST WALLS AND WILL NOT HAVE FOOTING DRAINS.
- ALL EXISTING DRAINAGE PATTERNS SHALL BE MAINTAINED. THE CONTRACTOR SHALL GRADE THE PROPERTY IN SUCH A MANNER TO MAINTAIN EXISTING LOCAL DRAINAGE PATTERNS AND TO PREVENT EXCESS RUNOFF AND/OR PONDING ON ADJACENT PROPERTIES BOTH DURING AND AFTER CONSTRUCTION.
- THE CONTRACTOR SHALL BE RESPONSIBLE TO RESTORE ALL DISTURBED AREAS TO THEIR PRE-CONSTRUCTION CONDITION OR BETTER ONCE ALL WORK IS COMPLETE.
- HOURS OF CONSTRUCTION SHALL BE LIMITED TO 7:00 A.M. TO 6:00 P.M. MONDAY THROUGH FRIDAY, AND 8:00 A.M. TO 6:00 P.M. SATURDAY. NO CONSTRUCTION ACTIVITY SHALL TAKE PLACE ON SUNDAYS. ADDITIONALLY, NO EXTERIOR LIGHTING FOR CONSTRUCTION PURPOSES, FREESTANDING OR OTHERWISE, IS APPROVED WITH THIS APPLICATION.
- DELIVERIES OF MATERIALS/EQUIPMENT TO THE SITE RELATED TO THIS CONSTRUCTION PROJECT ARE LIMITED TO 7:00 A.M. TO 5:00 P.M. MONDAY TO SATURDAY.

UTILITY NOTES:

- ALL NEW ON-SITE UTILITIES, INCLUDING CATV, SHALL BE LOCATED UNDERGROUND.
- ALL UTILITY WORK SHALL ADHERE TO ALL APPLICABLE TOWN OF FARMINGTON STANDARDS, REGULATIONS, POLICIES AND PRACTICES OF THE DEPARTMENT OF PUBLIC WORKS.
- ELECTRIC, TELEPHONE, CABLE, WATER, AND SANITARY SEWER SERVICES SHALL CONFORM TO THE POLICIES AND PRACTICES OF THE APPROPRIATE UTILITY AUTHORITY. ELECTRICAL SERVICES ARE PROVIDED BY EVERSOURCE, WATER SERVICE IS PROVIDED BY CONNECTICUT WATER COMPANY; SANITARY SEWER SERVICES ARE PROVIDED BY THE TOWN OF FARMINGTON.
- ALL UTILITIES AND ON-SITE STORM DRAINAGE SHALL BE STRUCTURALLY SUPPORTED TO MINIMIZE DISRUPTION FROM SETTLEMENT OF UNDERLYING SOIL.
- SANITARY SEWER SERVICES SHALL BE SDR 35 PVC PIPE. SEWER MANHOLES SHALL BE 5' DIA. PRECAST CONCRETE WITH HEAVY DUTY CAST IRON GRATES.
- UTILITY SERVICE SIZES, MATERIALS, AND INSTALLATIONS SHALL BE APPROVED AND INSPECTED BY THE APPROPRIATE UTILITY COMPANY.
- LIGHTING SHALL BE DIRECTED INTERNALLY TOWARDS PARKING AREAS. LIGHT STANDARDS, LUMINARIES, WIRING & LOCATION SHALL BE DESIGNED BY A LICENSED ELECTRICAL ENGINEER.
- LOCATION AND SIZE OF ALL BUILDING UTILITY CONNECTIONS SHALL BE COORDINATED WITH BUILDING ARCHITECTURAL PLANS AND CUSTODIAL UTILITY AUTHORITY.
- WATER SERVICE INSTALLATION NOTES:
 - ALL WATER SERVICE INSTALLATIONS SHALL CONFORM TO THE POLICIES AND PRACTICES OF THE CONNECTICUT WATER COMPANY AND THE TOWN OF FARMINGTON DEPARTMENT OF PUBLIC WORKS AND ENGINEERING DIVISION.
 - APPROVED BACKFLOW PREVENTERS ARE REQUIRED ON ALL FIRE SPRINKLER (IF APPLICABLE) AND DOMESTIC WATER LINES.
 - MINIMUM COVER OVER TOP OF WATER MAIN SHALL BE 5'-0" FROM FINISH GRADE PER THE CONNECTICUT WATER COMPANY STANDARDS.
 - HORIZONTAL PIPE SEPARATIONS:
 - 10' MINIMUM BETWEEN WATER AND SANITARY SEWER
 - 10' MINIMUM BETWEEN WATER AND BUILDINGS
 - 5' MINIMUM BETWEEN WATER AND CATCH BASINS OR DRAIN PIPES
 - SITE MUST BE AT SUBGRADE BEFORE WATER UTILITIES CAN BE INSTALLED.
 - ARCHITECTURAL PLANS SHALL SHOW UTILITY ROOM, ENTRY POINT OF WATER SERVICE, AND METER LOCATIONS.
 - ALL BRANCH LINE VALVES TO BE LOCATED AS CLOSE AS POSSIBLE TO MAIN LINES.
- MINIMUM 6" SEPARATION BETWEEN ELECTRIC AND ALL OTHER PIPES SUCH AS WATER, SEWER AND DRAINS. ALL ELECTRIC FACILITIES SUCH AS CONDUITS AND PRIMARY & SECONDARY HANDHOLES SHALL CONFORM TO THE REQUIREMENTS OF EVERSOURCE.

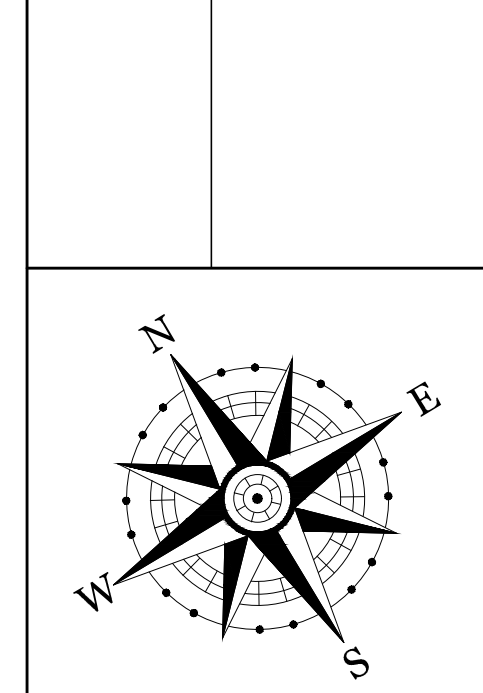


REV.	DESCRIPTION OF REVISION	DATE	APPR.

UTILITY PLAN

NEW COMMERCIAL DEVELOPMENT
 PROPERTY ADDRESS:
 55 DEPOT PLACE, FARMINGTON, CT 06085

PREPARED FOR:
MORIN TREE SERVICE, LLC
 295 PLAINVILLE AVE, UNIONVILLE, CT 06085



PROJECT NO. 2025-0152	SCALE 1" = 20'
DRAWN BY: SMM	DATE 7/1/2025
CHECKED BY: SMM	DATE 7/1/2025

DRAWING
UT-1

SHEET NUMBER: 4 OF 10

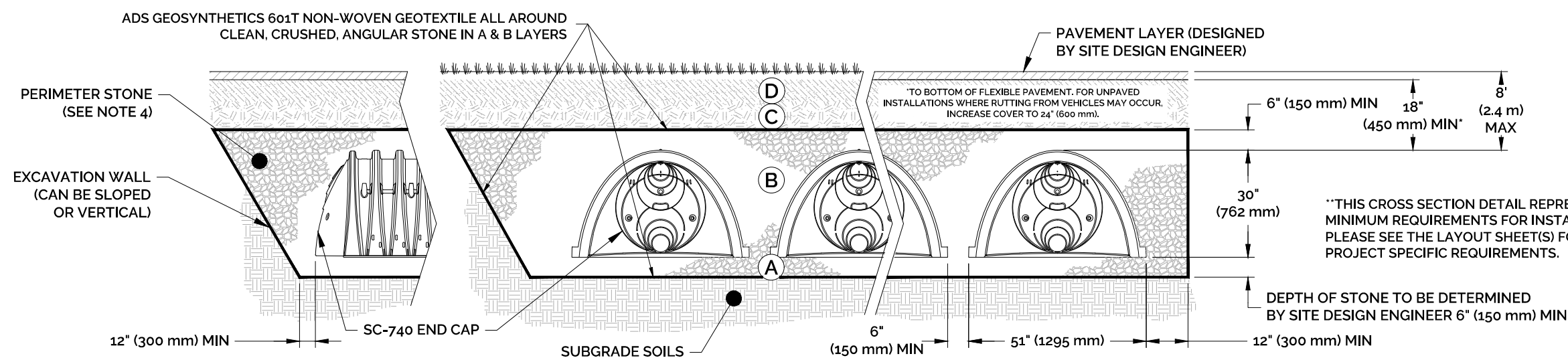
Z:\DRAWING\HH ENGINEERING ASSOCIATES\PROJECTS\2025\2025-0152-0152-UT-1\UTILITIES\DWG\1-UT-1.DWG T:\UTILITIES\Drawings\2025\2025-0152-0152-UT-1.DWG

ACCEPTABLE FILL MATERIALS: STORMTECH SC-740 CHAMBER SYSTEMS

MATERIAL LOCATION	DESCRIPTION	AASHTO MATERIAL CLASSIFICATIONS	COMPACTION / DENSITY REQUIREMENT
D	FINAL FILL: FILL MATERIAL FOR LAYER 'D' STARTS FROM THE TOP OF THE 'C' LAYER TO THE BOTTOM OF FLEXIBLE PAVEMENT OR UNPAVED FINISHED GRADE ABOVE. NOTE THAT PAVEMENT SUBBASE MAY BE PART OF THE 'D' LAYER.	N/A	PREPARE PER SITE DESIGN ENGINEER'S PLANS. PAVED INSTALLATIONS MAY HAVE STRINGENT MATERIAL AND PREPARATION REQUIREMENTS.
C	INITIAL FILL: FILL MATERIAL FOR LAYER 'C' STARTS FROM THE TOP OF THE EMBEDMENT STONE ('B' LAYER) TO 18" (450 mm) ABOVE THE TOP OF THE CHAMBER. NOTE THAT PAVEMENT SUBBASE MAY BE A PART OF THE 'C' LAYER.	AASHTO M145 ¹ A-1, A-2-4, A-3 OR AASHTO M43 ¹ 3, 357, 4, 487, 5, 55, 57, 6, 67, 68, 7, 78, 8, 89, 9, 10	BEGIN COMPACTIONS AFTER 12" (300 mm) OF MATERIAL OVER THE CHAMBERS IS REACHED. COMPACT ADDITIONAL LAYERS IN 6" (150 mm) MAX LIFTS TO A MIN. 95% PROCTOR DENSITY FOR WELL-GRADED MATERIAL AND 95% RELATIVE DENSITY FOR PROCESSED AGGREGATE MATERIALS. ROLLER GROSS VEHICLE WEIGHT NOT TO EXCEED 12,000 lbs (53 kN). DYNAMIC FORCE NOT TO EXCEED 20,000 lbs (89 kN).
B	EMBEDMENT STONE: FILL SURROUNDING THE CHAMBERS FROM THE FOUNDATION STONE ('A' LAYER) TO THE 'C' LAYER ABOVE.	AASHTO M43 ¹ 3, 357, 4, 487, 5, 55, 57	NO COMPACTION REQUIRED.
A	FOUNDATION STONE: FILL BELOW CHAMBERS FROM THE SUBGRADE UP TO THE FOOT (BOTTOM) OF THE CHAMBER.	AASHTO M43 ¹ 3, 357, 4, 487, 5, 55, 57	PLATE COMPACT OR ROLL TO ACHIEVE A FLAT SURFACE. ^{1,2}

- PLEASE NOTE:
- THE LISTED AASHTO DESIGNATIONS ARE FOR GRADATIONS ONLY. THE STONE MUST ALSO BE CLEAN, CRUSHED, ANGULAR. FOR EXAMPLE, A SPECIFICATION FOR #4 STONE WOULD STATE: "CLEAN, CRUSHED, ANGULAR NO. 4 (AASHTO M43) STONE".
 - STORMTECH COMPACTION REQUIREMENTS ARE MET FOR 'A' LOCATION MATERIALS WHEN PLACED AND COMPACTED IN 6" (150 mm) MAX LIFTS WITH TWO FULL COVERAGES WITH A VIBRATORY COMPACTOR.
 - WHERE INFILTRATION SURFACES MAY BE COMPROMISED BY COMPACTION, FOR STANDARD DESIGN LOAD CONDITIONS, A FLAT SURFACE MAY BE ACHIEVED BY RAKING OR DRAGGING WITHOUT COMPACTION EQUIPMENT. FOR SPECIAL LOAD DESIGNS, CONTACT STORMTECH FOR COMPACTION REQUIREMENTS.
 - ONCE LAYER 'C' IS PLACED, ANY SOIL/MATERIAL CAN BE PLACED IN LAYER 'D' UP TO THE FINISHED GRADE. MOST PAVEMENT SUBBASE SOILS CAN BE USED TO REPLACE THE MATERIAL REQUIREMENTS OF LAYER 'C' OR 'D' AT THE SITE DESIGN ENGINEER'S DISCRETION.

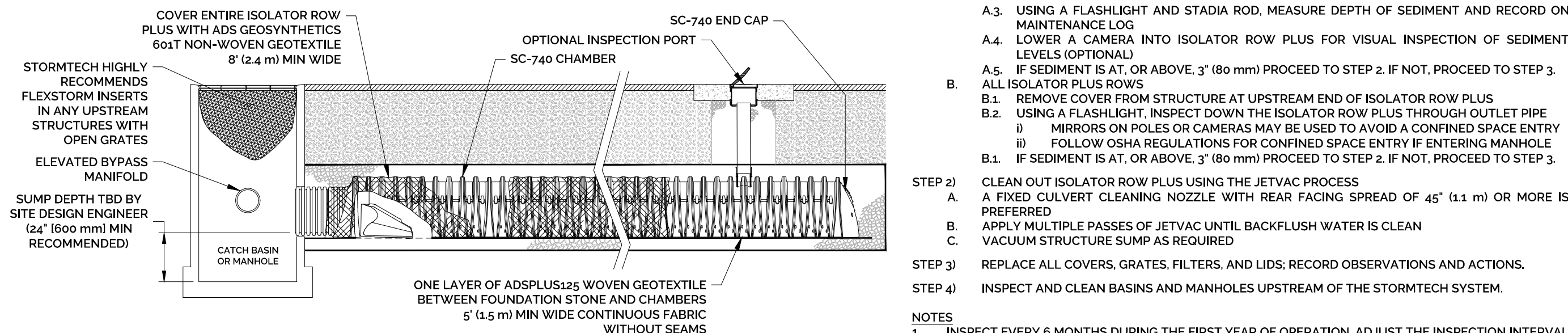
ADS STORMTECH ACCEPTABLE FILL MATERIALS
NOT TO SCALE



NOTES:

- CHAMBERS SHALL MEET THE REQUIREMENTS OF ASTM F2418, "STANDARD SPECIFICATION FOR POLYPROPYLENE (PP) CORRUGATED WALL STORMWATER COLLECTION CHAMBERS".
- SC-740 CHAMBERS SHALL BE DESIGNED IN ACCORDANCE WITH ASTM F2787 "STANDARD PRACTICE FOR STRUCTURAL DESIGN OF THERMOPLASTIC CORRUGATED WALL STORMWATER COLLECTION CHAMBERS".
- PERIMETER STONE MUST BE EXTENDED HORIZONTALLY TO THE EXCAVATION WALL FOR BOTH VERTICAL AND SLOPED DESIGN WALLS.
- REQUIREMENTS FOR HANDLING AND INSTALLATION:
 - TO MAINTAIN THE WIDTH OF CHAMBERS DURING SHIPPING AND HANDLING, CHAMBERS SHALL HAVE INTEGRAL, INTERLOCKING STACKING LUGS.
 - TO ENSURE A SECURE JOINT DURING INSTALLATION AND BACKFILL, THE HEIGHT OF THE CHAMBER JOINT SHALL NOT BE LESS THAN 2".
 - TO ENSURE THE INTEGRITY OF THE ARCH SHAPE DURING INSTALLATION, THE ARCH STIFFNESS CONSTANT AS DEFINED IN SECTION 6.2.8 OF ASTM F2418 SHALL BE GREATER THAN OR EQUAL TO 550 LBS/FT.².
 - AND TO RESIST CHAMBER DEFORMATION DURING INSTALLATION AT ELEVATED TEMPERATURES (ABOVE 73° F / 23° C), CHAMBERS SHALL BE PRODUCED FROM REFLECTIVE GOLD OR YELLOW COLORS.

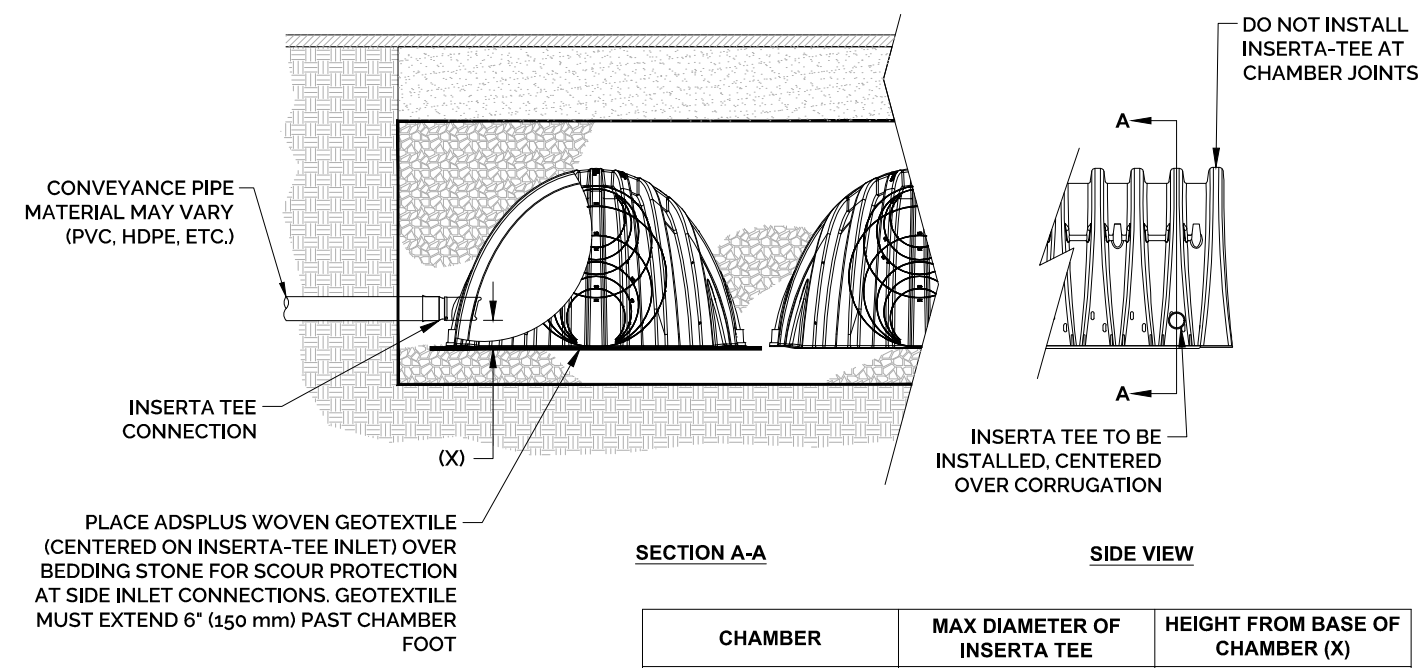
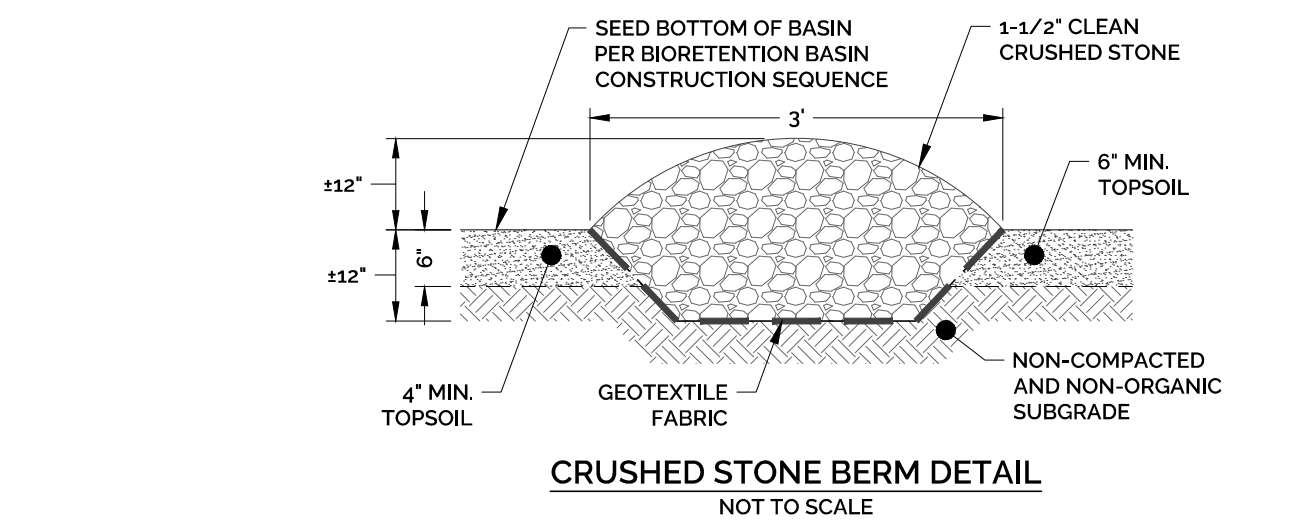
ADS STORMTECH SC-740 CROSS-SECTION DETAIL
NOT TO SCALE



ADS STORMTECH SC-740 ISOLATOR ROW
NOT TO SCALE

INSPECTION & MAINTENANCE

- STEP 1) INSPECT ISOLATOR ROW PLUS FOR SEDIMENT INSPECTION PORTS (IF PRESENT)
- REMOVE/OPEN LID ON NYLOPLAST INLINE DRAIN
 - REMOVE AND CLEAN FLEXSTORM FILTER IF INSTALLED
 - USING A FLASHLIGHT AND STADIA ROD, MEASURE DEPTH OF SEDIMENT AND RECORD ON MAINTENANCE LOG
 - LOWER A CAMERA INTO ISOLATOR ROW PLUS FOR VISUAL INSPECTION OF SEDIMENT LEVELS (OPTIONAL)
 - IF SEDIMENT IS AT, OR ABOVE, 3" (80 mm) PROCEED TO STEP 2. IF NOT, PROCEED TO STEP 3.
- ALL ISOLATOR PLUS ROWS
- REMOVE COVER FROM STRUCTURE AT UPSTREAM END OF ISOLATOR ROW PLUS THROUGH OUTLET PIPE
 - USING A FLASHLIGHT, INSPECT DOWN THE ISOLATOR ROW PLUS THROUGH OUTLET PIPE
 - MIRRORS ON POLES OR CAMERAS MAY BE USED TO AVOID A CONFINED SPACE ENTRY
 - FOLLOW OSHA REGULATIONS FOR CONFINED SPACE ENTRY IF ENTERING MANHOLE
 - IF SEDIMENT IS AT, OR ABOVE, 3" (80 mm) PROCEED TO STEP 2. IF NOT, PROCEED TO STEP 3.
- CLEAN OUT ISOLATOR ROW PLUS USING THE JETVAC PROCESS
- A FIXED CULVERT CLEANING NOZZLE WITH REAR FACING SPREAD OF 45° (1.1 m) OR MORE IS PREFERRED
 - APPLY MULTIPLE PASSES OF JETVAC UNTIL BACKFLUSH WATER IS CLEAN
 - VACUUM STRUCTURE SUMP AS REQUIRED
- REPLACE ALL COVERS, GRATES, FILTERS, AND LIDS; RECORD OBSERVATIONS AND ACTIONS.
- STEP 4) INSPECT AND CLEAN BASINS AND MANHOLES UPSTREAM OF THE STORMTECH SYSTEM.
- NOTES
- INSPECT EVERY 6 MONTHS DURING THE FIRST YEAR OF OPERATION. ADJUST THE INSPECTION INTERVAL BASED ON PREVIOUS OBSERVATIONS OF SEDIMENT ACCUMULATION AND HIGH WATER ELEVATIONS.
 - CONDUCT JETTING AND VACTORING ANNUALLY OR WHEN INSPECTION SHOWS THAT MAINTENANCE IS NECESSARY.

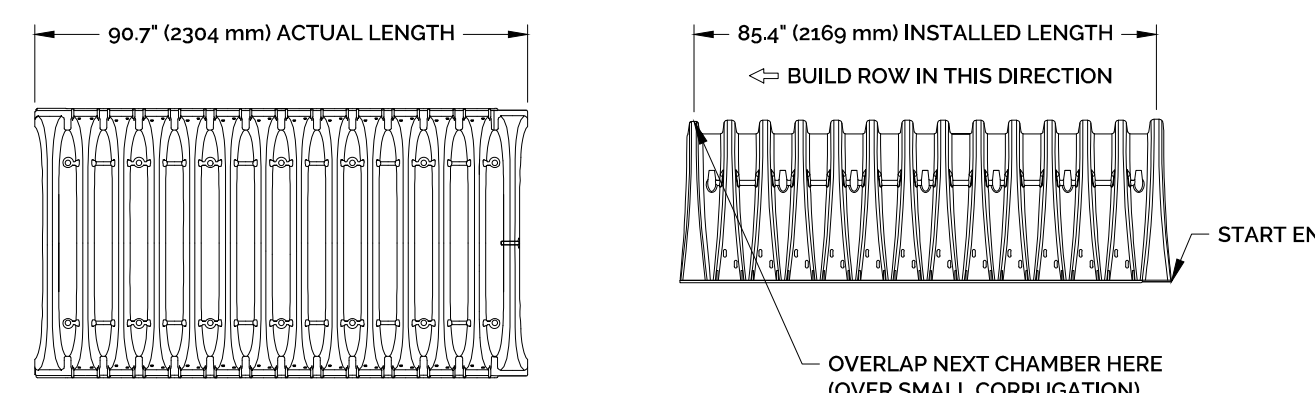


CHAMBER	MAX DIAMETER OF INSERTA TEE	HEIGHT FROM BASE OF CHAMBER (X)
SC-310	6" (150 mm)	4" (100 mm)
SC-740	10" (250 mm)	4" (100 mm)
DC-780	10" (250 mm)	4" (100 mm)
MC-3500	12" (300 mm)	6" (150 mm)
MC-4500	12" (300 mm)	8" (200 mm)
MC-7200	12" (300 mm)	8" (200 mm)

INSERTA TEE FITTINGS AVAILABLE FOR SDR 26, SDR 35, SDR 40 IPS GASKETED & SOLVENT WELD, N-12, HP STORM, C-900 OR DUCTILE IRON

- NOTES:
- PART NUMBERS WILL VARY BASED ON INLET PIPE MATERIALS. CONTACT STORMTECH FOR MORE INFORMATION.
 - CONTACT ADS ENGINEERING SERVICES IF INSERTA TEE INLET MUST BE RAISED AS NOT ALL INVERTS ARE POSSIBLE.

ADS STORMTECH SC-740 INSERTA TEE
NOT TO SCALE



NOMINAL CHAMBER SPECIFICATIONS

SIZE (W X H X INSTALLED LENGTH)	CHAMBER STORAGE	MINIMUM INSTALLED STORAGE*	WEIGHT
51.0" X 30.0" X 85.4" (1295 mm X 762 mm X 2169 mm)	45.0 CUBIC FEET (1.30 m ³)	74.9 CUBIC FEET (2.12 m ³)	75.0 lbs. (33.6 kg)

*ASSUMES 6" (152 mm) STONE ABOVE, BELOW, AND BETWEEN CHAMBERS

PRE-FAB STUBS AT BOTTOM OF END CAP WITH FLAMP END WITH 'BR'
PRE-FAB STUBS AT BOTTOM OF END CAP FOR PART NUMBERS ENDING WITH 'B'
PRE-FAB STUBS AT TOP OF END CAP FOR PART NUMBERS ENDING WITH 'T'
PRE-CORED END CAPS END WITH 'PC'

PART #	STUB	A	B	C
SC740EP06T / SC740EP06TPC	6" (150 mm)	10.9" (277 mm)	18.5" (470 mm)	---
SC740EP08B / SC740EP08BPC	8" (200 mm)	12.2" (310 mm)	16.5" (419 mm)	0.5" (13 mm)
SC740EP08T / SC740EP08TPC	8" (200 mm)	12.2" (310 mm)	14.5" (368 mm)	0.6" (15 mm)
SC740EP08B / SC740EP08BPC	10" (250 mm)	13.4" (340 mm)	---	0.7" (18 mm)
SC740EP10B / SC740EP10BPC	12" (300 mm)	14.7" (373 mm)	12.5" (318 mm)	---
SC740EP12T / SC740EP12TPC	15" (375 mm)	18.4" (467 mm)	9.0" (229 mm)	1.2" (30 mm)
SC740EP12B / SC740EP12BPC	15" (375 mm)	18.4" (467 mm)	9.0" (229 mm)	1.3" (33 mm)
SC740EP12T / SC740EP12TPC	18" (450 mm)	19.7" (500 mm)	5.0" (127 mm)	---
SC740EP12B / SC740EP12BPC	18" (450 mm)	19.7" (500 mm)	5.0" (127 mm)	1.6" (41 mm)
SC740EP24B	24" (600 mm)	18.5" (470 mm)	---	0.1" (3 mm)
SC740EP24BR	24" (600 mm)	18.5" (470 mm)	---	0.1" (3 mm)

ALL STUBS, EXCEPT FOR THE SC740EP24B/SC740EP24BR ARE PLACED AT BOTTOM OF END CAP SUCH THAT THE OUTSIDE DIAMETER OF THE STUB IS FLUSH WITH THE BOTTOM OF THE END CAP. FOR ADDITIONAL INFORMATION CONTACT STORMTECH AT 1-888-892-2694.

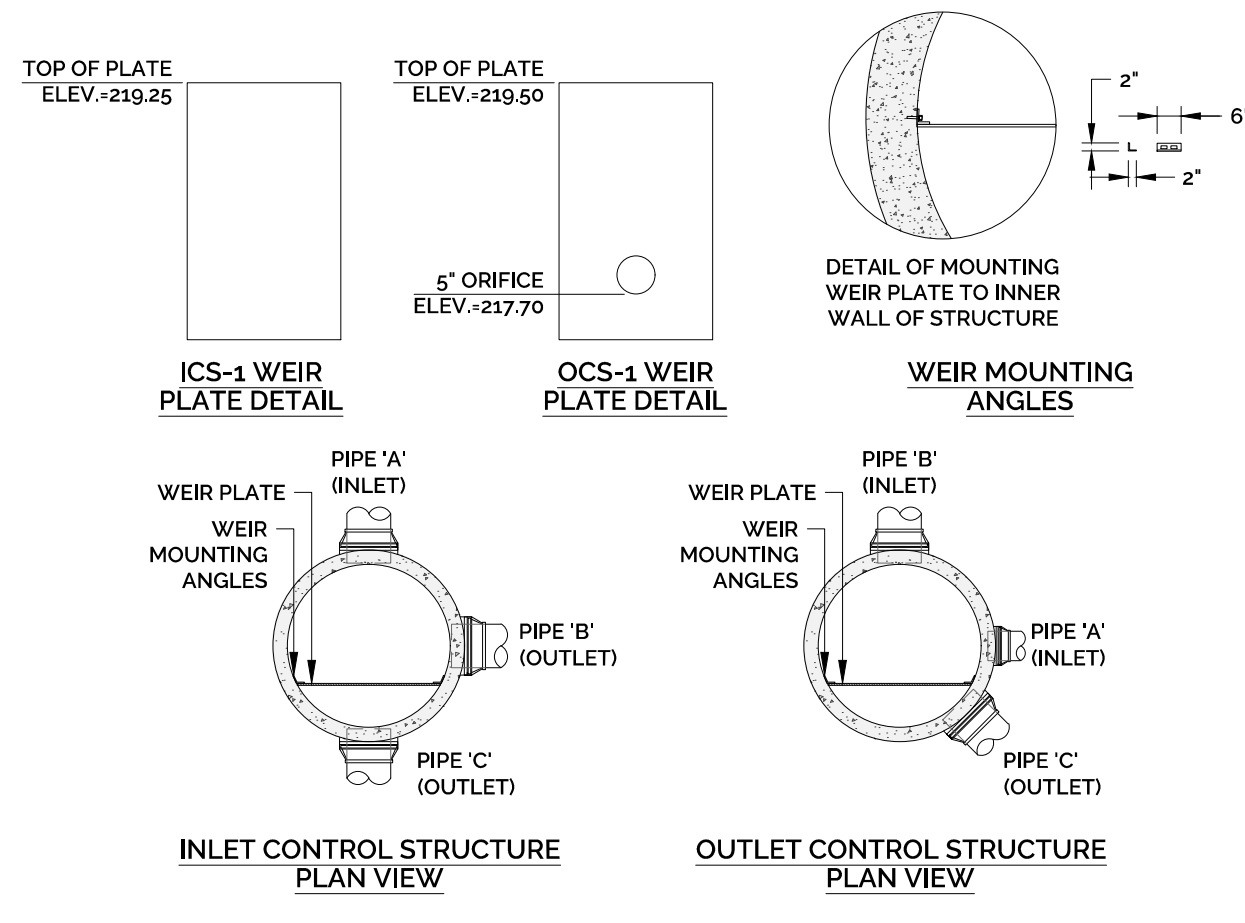
*FOR THE SC740EP24B/SC740EP24BR THE 24" (600 mm) STUB LIES BELOW THE BOTTOM OF THE END CAP APPROXIMATELY 1.75" (44 mm). BACKFILL MATERIAL SHOULD BE REMOVED FROM BELOW THE N-12 STUB SO THAT THE FITTING SITS LEVEL.

NOTE: ALL DIMENSIONS ARE NOMINAL

ADS STORMTECH SC-740 STUB LOCATIONS IN END CAPS
NOT TO SCALE

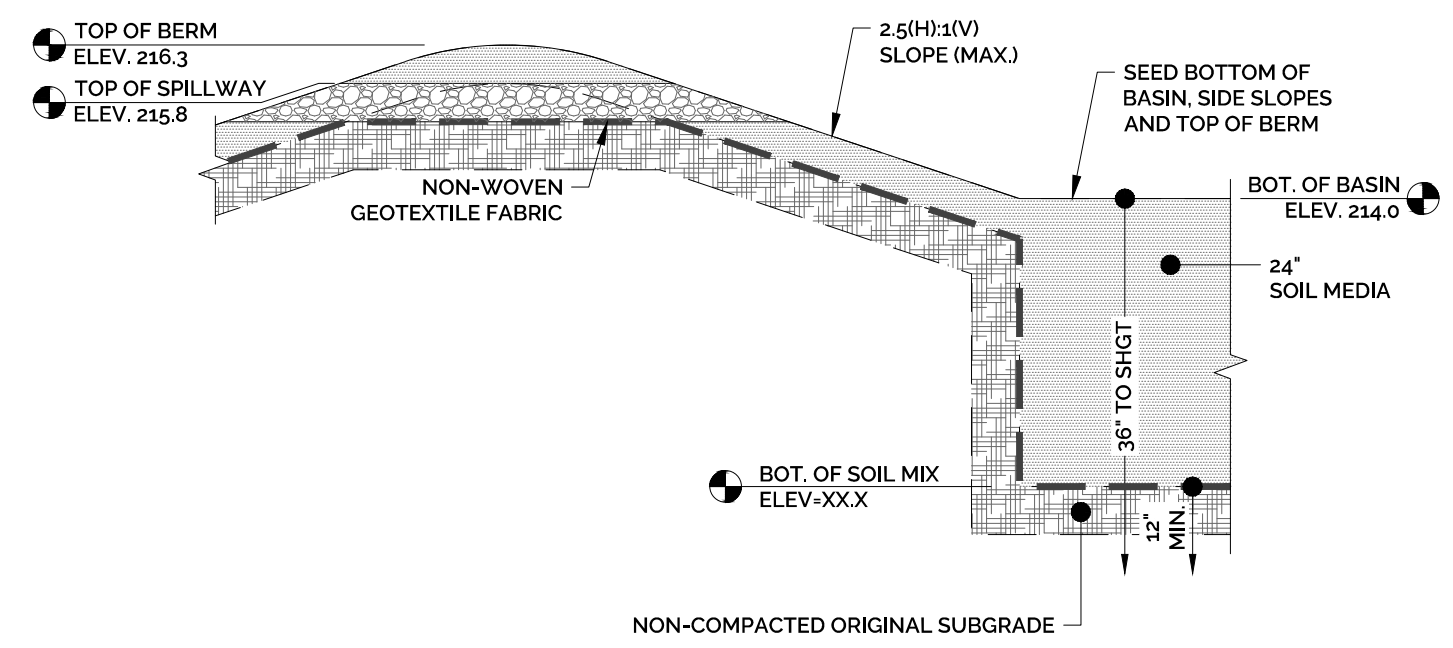
INLET/OUTLET CONTROL STRUCTURE ELEVATION SUMMARY TABLE

STRUCTURE ID	TOP OF FRAME ELEV.	LOW-FLOW ORIFICE ELEV.	TOP OF WEIR PLATE ELEV.	PIPE 'A' INV. ELEV.	PIPE 'B' INV. ELEV.	PIPE 'C' INV. ELEV.
ICS-1	222.15 [±]	---	219.25	217.10 (12") (NE)	217.30 (12") (SE)	217.05 (12") (SW)
OCS-1	222.70 [±]	217.70	219.50	217.05 (12") (NE)	217.05 (8") (SE)	217.00 (12") (S)



NOTE: INLET AND OUTLET CONTROL STRUCTURE MAY USE 6" OR 8" DIA. PRECAST BASES WHEN REQUIRED DUE TO SIZE OR NUMBER OF PIPES AT THE MANHOLE. PRECAST REDUCERS WILL BE PLACED ABOVE THE 6" AND 8" BASES. WALL THICKNESS TO INCREASE 1" FOR EACH 1" OF INSIDE DIAMETER INCREASE.

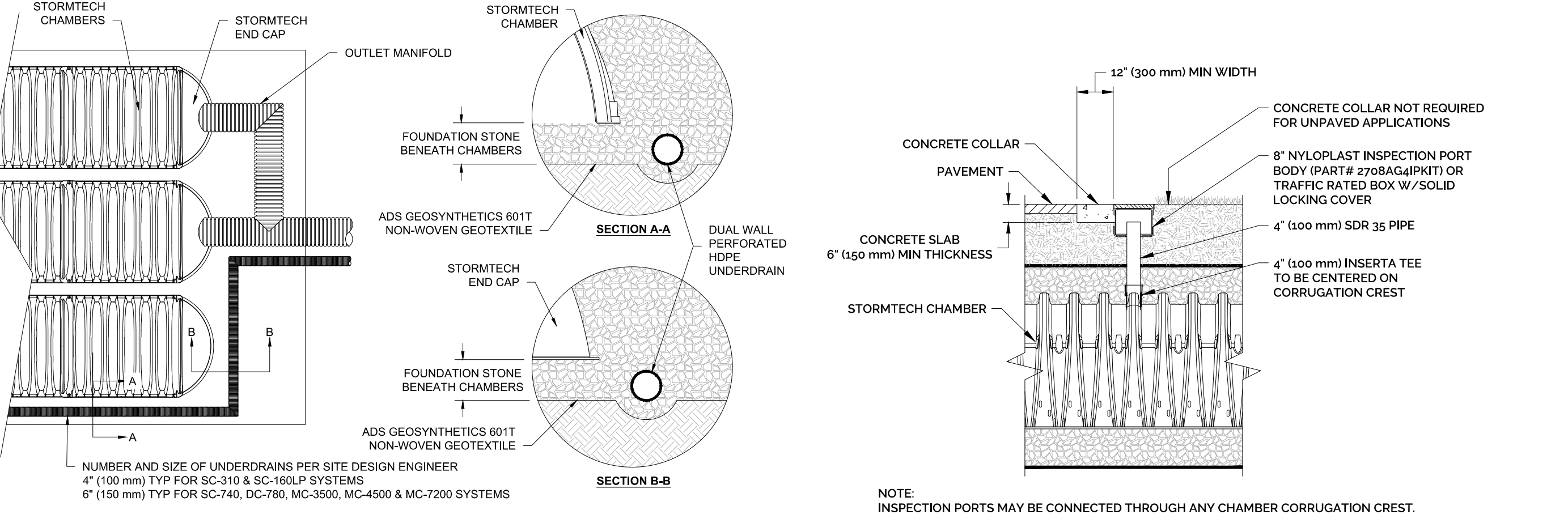
INLET/OUTLET CONTROL STRUCTURE DETAIL
NOT TO SCALE



RAINGARDEN CONSTRUCTION SEQUENCE:

- REMOVE EXISTING TOPSOIL, SURFACE LEAF LITTER, ETC. FROM RAINGARDEN AREA AND STOCKPILE FOR REUSE.
- AVOID COMPACTION OF NATURAL SOILS WITHIN BOTTOM AREA OF RAINGARDEN BY CONSTRUCTION EQUIPMENT. THE AREA OF THE RAINGARDEN SHALL BE MARKED OFF BY APPROPRIATE FENCING TO PREVENT THE MOVEMENT OF CONSTRUCTION VEHICLES OVER AND THE POSSIBLE COMPACTION OF THE NATURAL SOILS.
- SCARIFY NATURAL SOILS WITHIN THE BOTTOM OF BASIN PRIOR TO PLACING SOIL MEDIA.
- MIX BASIN SOIL MEDIA. SOIL MEDIA SHALL CONSIST OF THE FOLLOWING:
 - 60-95% ASTM C-33 SAND
 - 15-25% TOPSOIL. TOPSOIL SHOULD CONTAIN 5-20% ORGANIC MATERIAL, HAVE LESS THAN 5% CLAY, BE A SANDY LOAM, LOAMY SAND OR LOAM, AND HAVE A pH RANGE OF 5.5-7.0.
 - 3-8% ORGANIC MATTER. ORGANIC MATTER SHALL CONSIST OF PARTIALLY DECOMPOSED PEAT MOSS (100% PASSING THE 1/2" SIEVE) OR WOOD DERIVATIVES (SHREDDED WOOD, WOOD CHIPS, GROUND BARK).
- SOIL MEDIA PROVIDE FOR A MINIMUM INFILTRATION RATE OF 1.0 INCHES/HOUR. CONTRACTOR SHALL HAVE THE SOIL MEDIA TESTED PRIOR TO PLACEMENT. THE DESIGN ENGINEER SHALL REVIEW AND CERTIFY THAT THE SOIL MEDIA MEETS THE SOIL MEDIA SPECIFICATIONS.
- PLACE SOIL MEDIA IN THE BASIN IN 6-12" LIFTS USING LIGHT EQUIPMENT. ALLOW SOIL TO SETTLE NATURALLY THROUGH RAIN EVENTS OR PRESOAK AFTER PLACEMENT.
- SIDE SLOPES AND ALL AREAS DISTURBED OUTSIDE THE BASIN SHALL BE FINE GRADED WITH 6" TOPSOIL, RAKED, SEEDED AND MULCHED.
- SEED BOTTOM OF BASIN, SIDE SLOPES AND TOP OF BERM WITH NEW ENGLAND WETLAND PLANTS, INC. ROADSIDE SEED MIX AT 1 LB/1250 S.F. OR EQUIVALENT. SEEDING SHALL BE QUICKLY ESTABLISHED AND MAINTAINED TO PREVENT ANY SILT ACCUMULATION ALONG THE BOTTOM OF THE BASIN. MINIMUM VEGETATIVE COVERAGE OF 90% SHALL BE TARGETED AND MAINTAINED.
- RAINGARDEN SHALL NEVER BE USED FOR SEDIMENT CONTROL DURING AN ACTIVE CONSTRUCTION PERIOD.
- DURING CONSTRUCTION, SEDIMENT SHALL BE PREVENTED FROM ENTERING THE AREA OF THE BASIN. THE CONTRACTOR SHALL ENSURE THAT THE AREAS DRAINING TO THE RAINGARDEN ARE STABILIZED IN A TIMELY MANNER AND MAINTAINED OVER THE ENTIRE AREA DRAINING TO THE BASIN.
- DESIGN ENGINEER SHALL INSPECT THE INSTALLATION OF THE RAINGARDEN BASIN DURING THE FOLLOWING STAGES OF CONSTRUCTION:
 - AFTER EXCAVATION OF THE BASIN AND SCARIFICATION OF BOTTOM AND SIDEWALLS OF EXCAVATION.
 - AFTER PLACEMENT OF SOIL MEDIA.
 - A LICENSED LAND SURVEYOR SHALL PROVIDE AN AS-BUILT OF THE RAINGARDEN. DESIGN ENGINEER SHALL CERTIFY THAT THE SYSTEM WAS INSTALLED IN ACCORDANCE WITH THE DESIGN PLANS.

RAINGARDEN DETAIL
NOT TO SCALE



NO.	DATE	DESCRIPTION OF REVISION

STORMWATER MANAGEMENT DETAILS

NEW COMMERCIAL DEVELOPMENT
PROPERTY ADDRESS:
55 DEPOT PLACE, FARMINGTON, CT 06085
PREPARED FOR:
MORIN TREE SERVICE, LLC
295 PLAINVILLE AVE., UNIONVILLE, CT 06085

PROJECT NO. 2025-0152	SCALE AS NOTED
DRAWN BY: SMH	DATE 7/1/2025
CHECKED BY: SMH	DATE 7/1/2025

DRAWING
DT-3

STATE OF CONNECTICUT
REGISTERED PROFESSIONAL ENGINEER
No. 29798
EXPIRES 12/31/2026

SHEET NUMBER: 10 OF 10