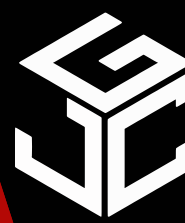


# FOR LEASE

480 24th Ave NW,  
Suite 106-108  
Norman, OK 73069



# Johnson

Commercial Group

JohnsonCommercialGroup.com



## Offering Summary

**Suite SF: 3,120 SF**

**Lease Rate: \$18 SF/YR**

**NNN Rate: \$4.50 SF/YR**

**Zoning: C-2**

**Year Built: 2010**

**Traffic Count: 18,451**

**Building Size: 85,726 SF**

## Property Overview

Suite 106-108 at Madison Square offers 3,120 SF of fully built-out office space, ideal for professional or service-based users. The layout features a large foyer with reception area, creating a strong first impression, along with two conference rooms, four private offices, and a dedicated copy/IT room to support daily operations.

Additional amenities include two restrooms, a breakroom, and a utility room, providing both functionality and convenience for staff and clients.

Located in a high-visibility center in NW Norman, this suite offers a turnkey office environment in a well-positioned and easily accessible location.

**Chris Johnson**  
chris@jcgok.com  
405.435.3572



**BRICK & BEAM**  
REALTY

**Sally Allen**  
sally@jcgok.com  
405.623.7920

# FOR LEASE

480 24th Ave NW,  
Suite 106-108  
Norman, OK 73069



# Johnson

Commercial Group

JohnsonCommercialGroup.com



**Chris Johnson**  
chris@jcgok.com  
405.435.3572



**Sally Allen**  
sally@jcgok.com  
405.623.7920

# FOR LEASE

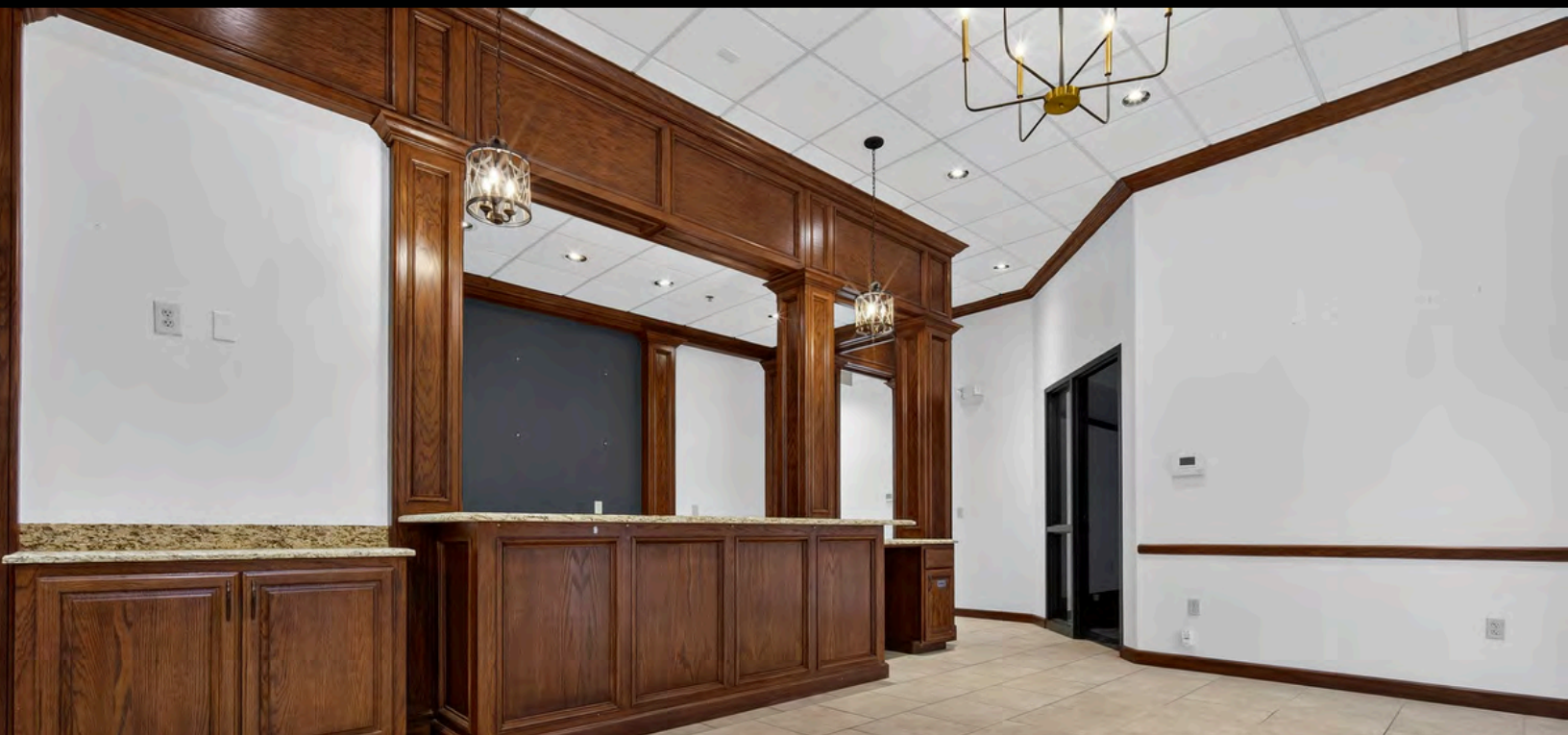
480 24th Ave NW,  
Suite 106-108  
Norman, OK 73069



# Johnson

Commercial Group

JohnsonCommercialGroup.com



**Chris Johnson**  
chris@jcgok.com  
405.435.3572

 **BRICK & BEAM**  
REALTY

**Sally Allen**  
sally@jcgok.com  
405.623.7920

# FOR LEASE

480 24th Ave NW,  
Suite 106-108  
Norman, OK 73069



# Johnson

Commercial Group

JohnsonCommercialGroup.com



**Chris Johnson**  
chris@jcgok.com  
405.435.3572

 **BRICK & BEAM**  
REALTY

**Sally Allen**  
sally@jcgok.com  
405.623.7920

# FOR LEASE

480 24th Ave NW,  
Suite 106-108  
Norman, OK 73069



# Johnson

Commercial Group

JohnsonCommercialGroup.com



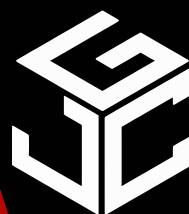
**Chris Johnson**  
chris@jcgok.com  
405.435.3572

 **BRICK & BEAM**  
REALTY

**Sally Allen**  
sally@jcgok.com  
405.623.7920

# FOR LEASE

480 24th Ave NW,  
Suite 106-108  
Norman, OK 73069



# Johnson

Commercial Group

JohnsonCommercialGroup.com



**Chris Johnson**  
chris@jcgok.com  
405.435.3572

 **BRICK & BEAM**  
REALTY

**Sally Allen**  
sally@jcgok.com  
405.623.7920

# FOR LEASE

480 24th Ave NW,  
Suite 106-108  
Norman, OK 73069



# Johnson

Commercial Group

JohnsonCommercialGroup.com



**Chris Johnson**  
chris@jcgok.com  
405.435.3572



**Sally Allen**  
sally@jcgok.com  
405.623.7920

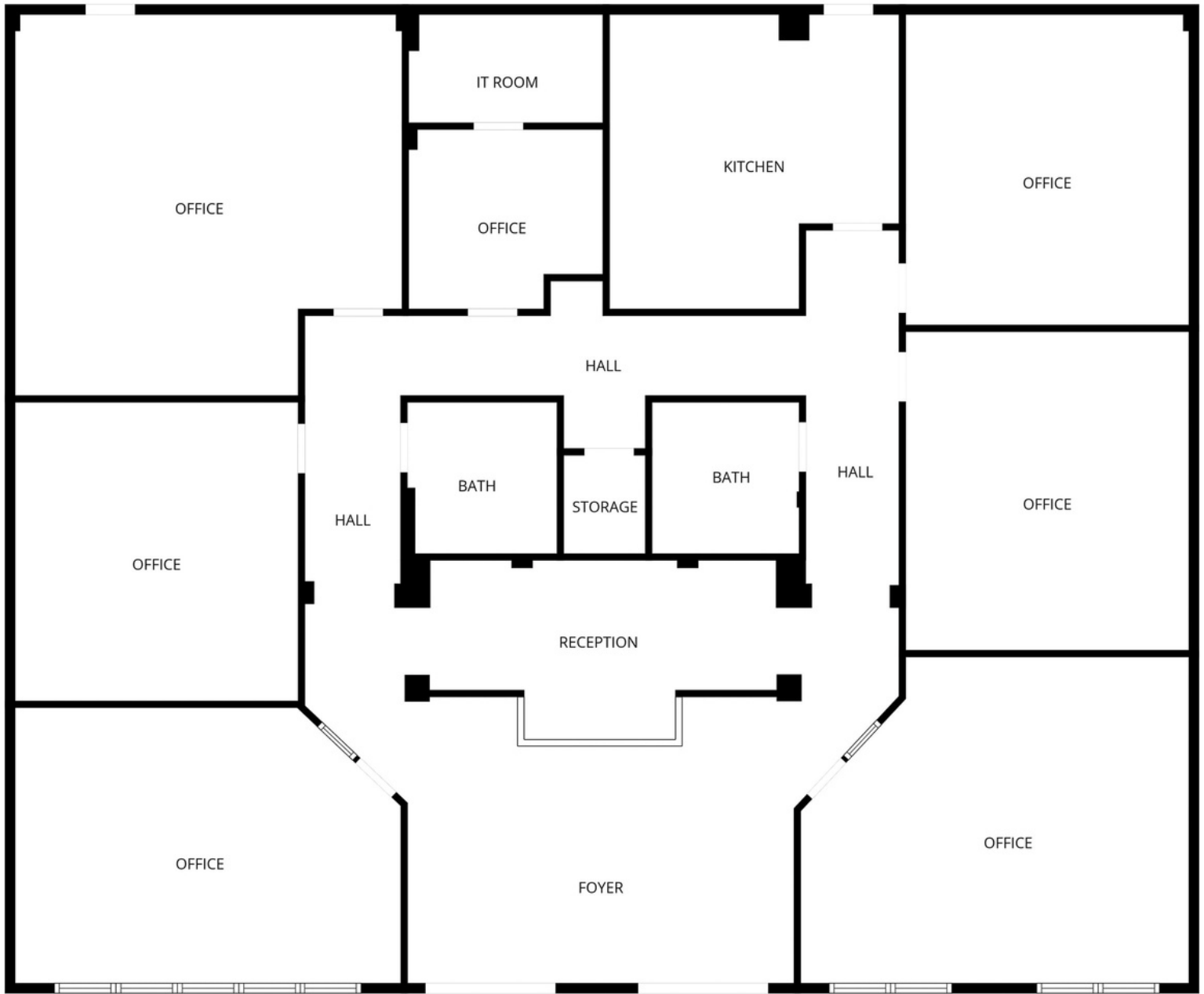
# FOR LEASE

480 24th Ave NW,  
Suite 106-108  
Norman, OK 73069



**Johnson**  
Commercial Group

JohnsonCommercialGroup.com



**Chris Johnson**  
chris@jcgok.com  
405.435.3572



**BRICK & BEAM**  
REALTY

**Sally Allen**  
sally@jcgok.com  
405.623.7920

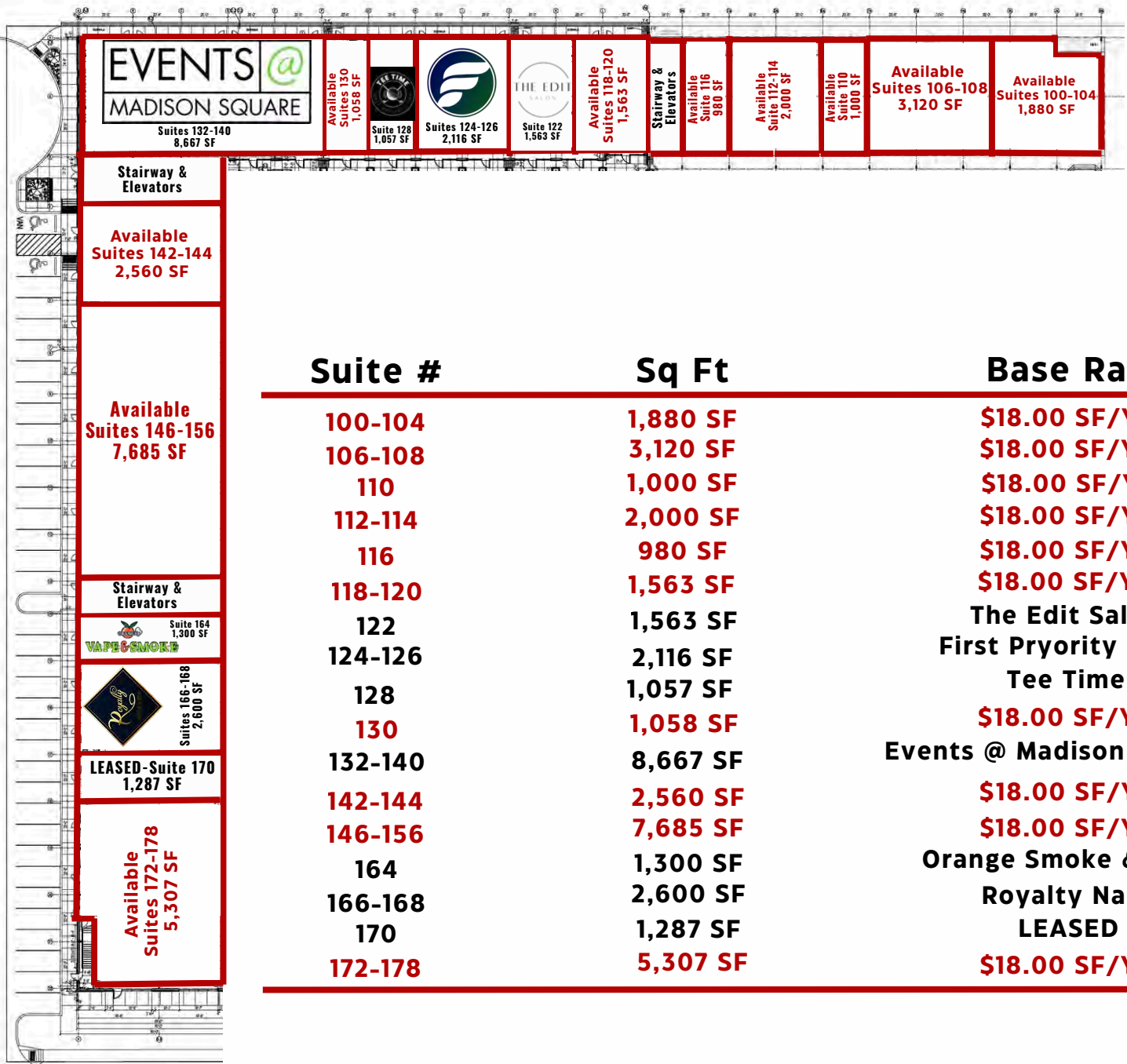
# FOR LEASE

**First Floor  
Suites 100-178**



**Johnson**  
Commercial Group

JohnsonCommercialGroup.com



Suite #	Sq Ft	Base Rate
100-104	1,880 SF	\$18.00 SF/YR
106-108	3,120 SF	\$18.00 SF/YR
110	1,000 SF	\$18.00 SF/YR
112-114	2,000 SF	\$18.00 SF/YR
116	980 SF	\$18.00 SF/YR
118-120	1,563 SF	\$18.00 SF/YR
122	1,563 SF	The Edit Salon
124-126	2,116 SF	First Priority Bank
128	1,057 SF	Tee Time
130	1,058 SF	\$18.00 SF/YR
132-140	8,667 SF	Events @ Madison Square
142-144	2,560 SF	\$18.00 SF/YR
146-156	7,685 SF	\$18.00 SF/YR
164	1,300 SF	Orange Smoke & Vape
166-168	2,600 SF	Royalty Nails
170	1,287 SF	LEASED
172-178	5,307 SF	\$18.00 SF/YR

**Chris Johnson**  
chris@jcgok.com  
405.435.3572



**Sally Allen**  
sally@jcgok.com  
405.623.7920

# FOR LEASE

Second Floor  
Suites 210-272



**Johnson**  
Commercial Group

JohnsonCommercialGroup.com

**Suites 210-272**  
**39,983 SF of Available**  
**Contiguous Space**

**Executive Suites**  
**Fully Leased**

## Suite #

## Sq Ft

## Base Rate

210	1,007 SF	\$16.00 SF/YR
212	1,007 SF	\$16.00 SF/YR
214	1,007 SF	\$16.00 SF/YR
216	1,237 SF	\$16.00 SF/YR
218	1,027 SF	\$16.00 SF/YR
220	1,048 SF	\$16.00 SF/YR
222	1,048 SF	\$16.00 SF/YR
224	1,048 SF	\$16.00 SF/YR
226	1,048 SF	\$16.00 SF/YR
228	1,048 SF	\$16.00 SF/YR
230	1,048 SF	\$16.00 SF/YR
232-246	6,904 SF	\$16.00 SF/YR
248-258	10,306 SF	\$16.00 SF/YR
260-266	7,000 SF	\$16.00 SF/YR
268-272	4,200 SF	\$16.00 SF/YR

**Chris Johnson**  
chris@jcgok.com  
405.435.3572

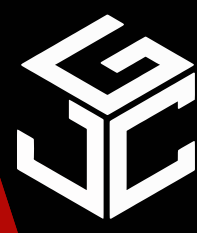


**BRICK & BEAM**  
REALTY

**Sally Allen**  
sally@jcgok.com  
405.623.7920

# FOR LEASE

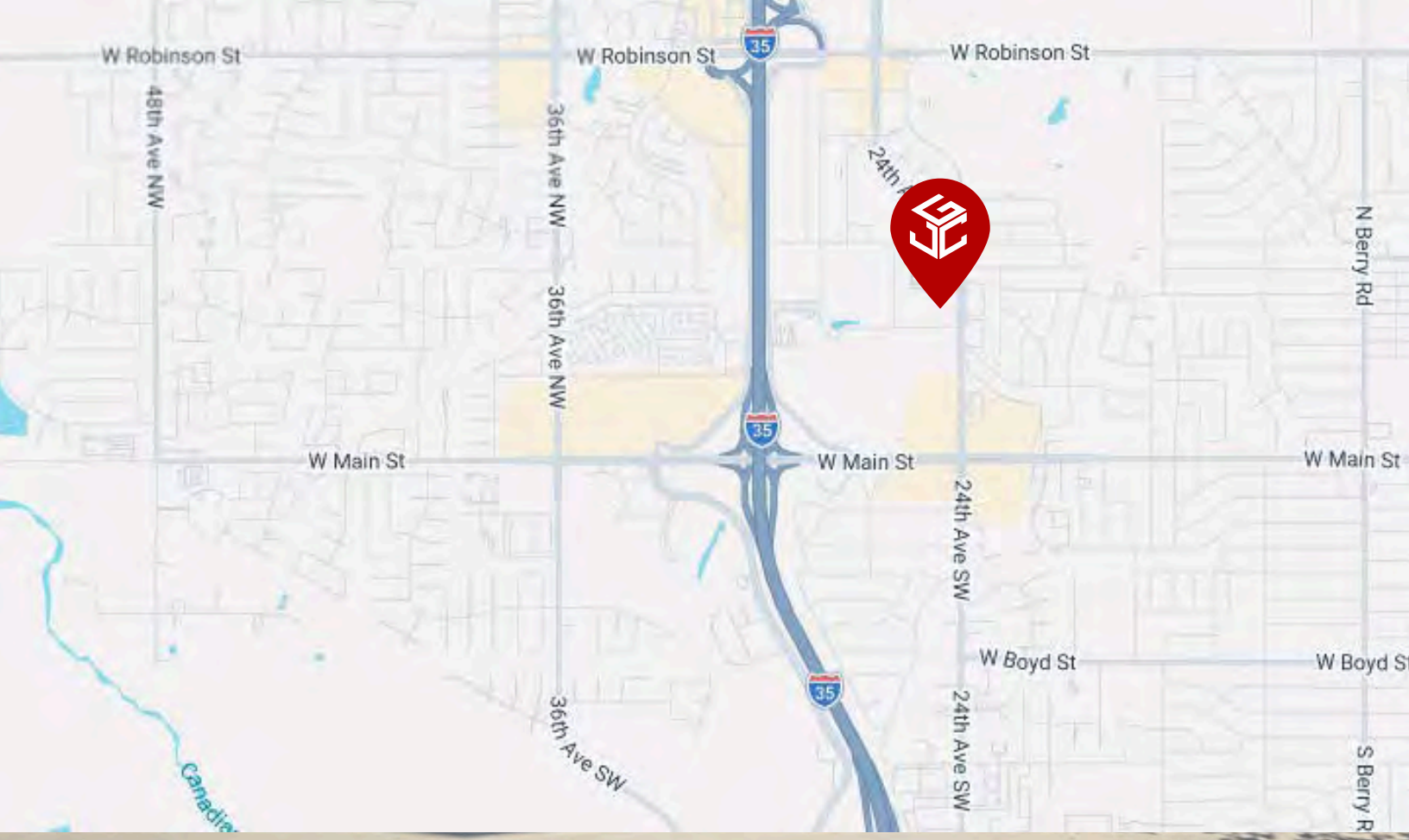
480 24th Ave NW,  
Norman, OK 73069



# Johnson

Commercial Group

JohnsonCommercialGroup.com



**Chris Johnson**  
chris@jcgok.com  
405.435.3572



**Sally Allen**  
sally@jcgok.com  
405.623.7920



# FOR LEASE

480 24th Ave NW,  
Norman, OK 73069



# Johnson

Commercial Group

JohnsonCommercialGroup.com



## Disclaimer

A real estate broker is not authorized to give legal or tax advice. No representation is made by Johnson Commercial Group, its agents or employees, as to the legal effect or tax consequences of the information contained herein or any transaction relating thereto. Although all information furnished regarding property sales or financing options are from sources deemed to be reliable, such information has not been verified and no express representation is made on, or is in any way implied as to the accuracy thereof and is subject to errors, omissions, change of price, or other conditions prior to sale or withdrawal without notice.

**Chris Johnson**  
chris@jcgok.com  
405.435.3572



**Sally Allen**  
sally@jcgok.com  
405.623.7920