

MEDICAL / OFFICE FOR LEASE
CROWN POINT PROFESSIONAL
19284 COTTONWOOD DR., PARKER, CO 80138

TREVEY
COMMERCIAL



PROPERTY FEATURES

- ±1,993 SF Available Immediately
- Move-In Ready Medical / Office Space
- Just 0.4 Miles from Parker Adventist Hospital; Children's Hospital Colorado Onsite
- Ample Onsite Parking (4.2:1,000)
- Beautifully Maintained Building with Nightly Janitorial
- Individually Controlled Heating & Cooling in Each Suite
- Adjacent to Life Time Fitness and Surrounded by Ample Dining Options
- Stunning Mountain Views
- Prime Location with High Visibility & Easy Access to E-470 and Parker Rd.

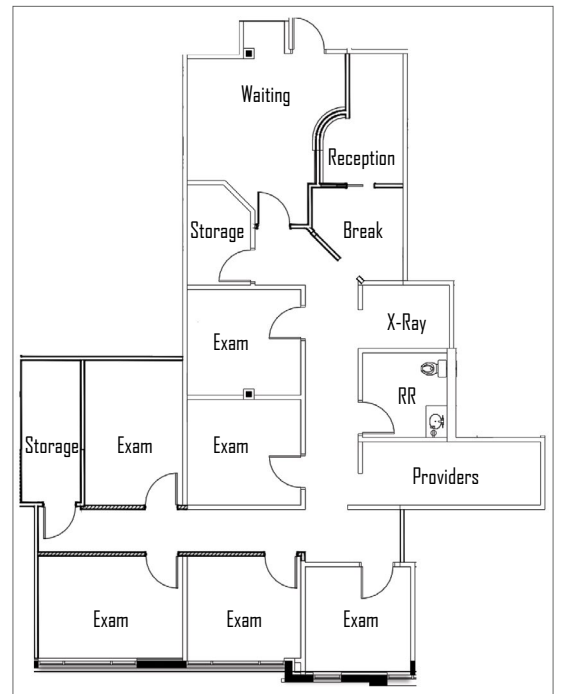
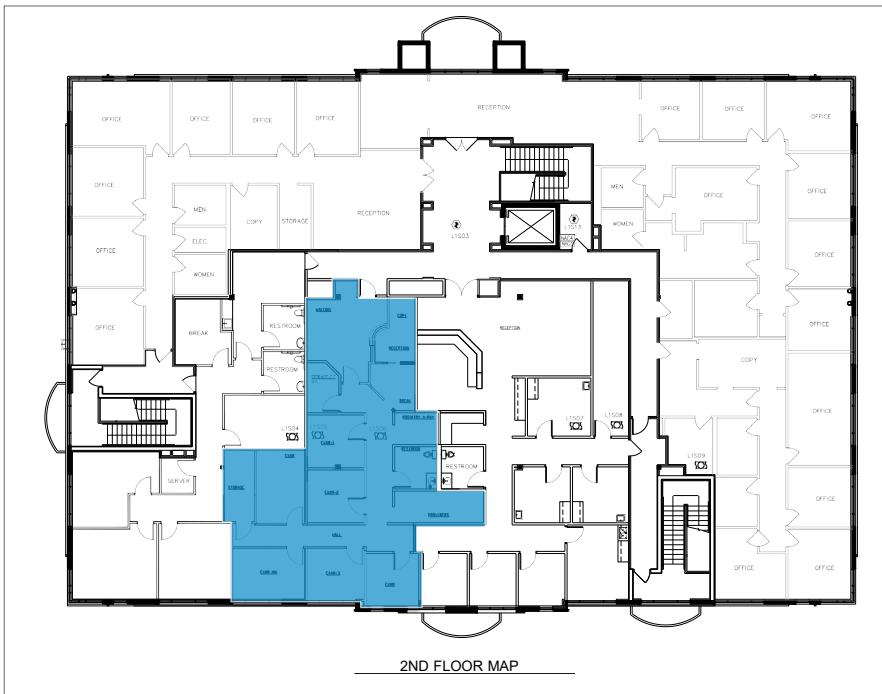
PROPERTY DETAILS

AVAILABLE	<u>Second Floor</u> <ul style="list-style-type: none">• Suite 201B: ±1,993 SF
LEASE RATE	\$27.00 / SF
LEASE TYPE	NNN
USE	Medical / Office
PARKING	4.20:1,000
BUILDING SIZE	27,154 SF
Y.O.C.	2006
ZONING	Commercial
CITY / COUNTY	Parker / Douglas

REGIONAL AERIAL



SITE & FLOOR PLAN



BROKERAGE DISCLOSURE