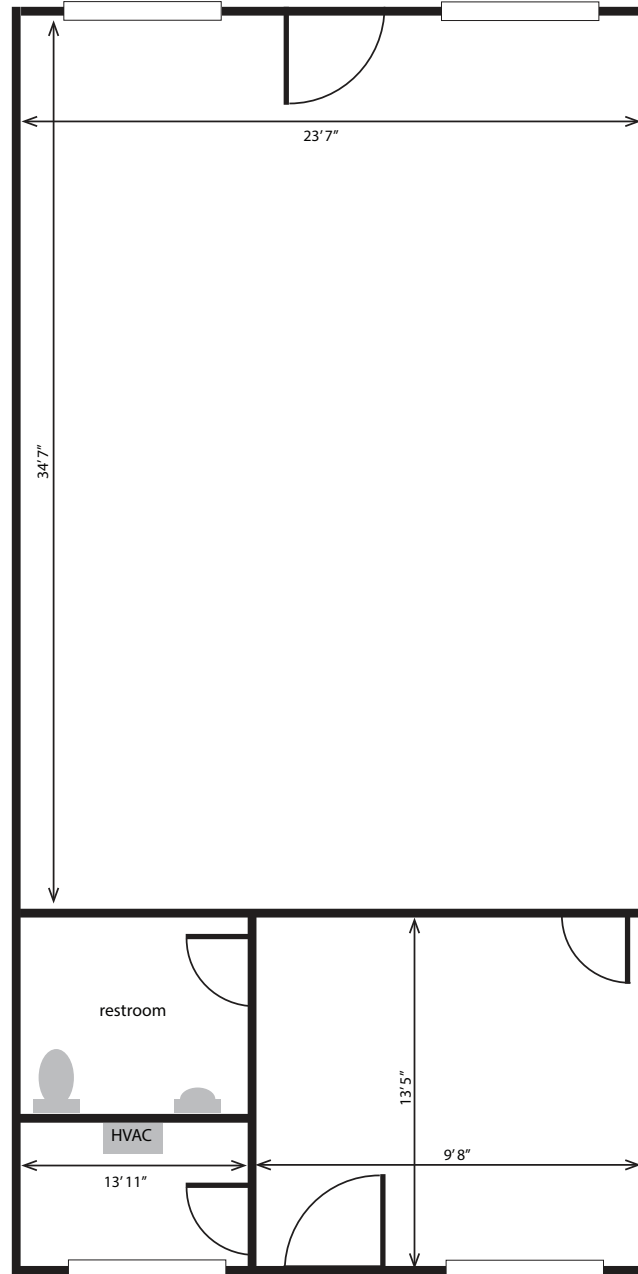


Ashrose Plaza
1100 US 127 South

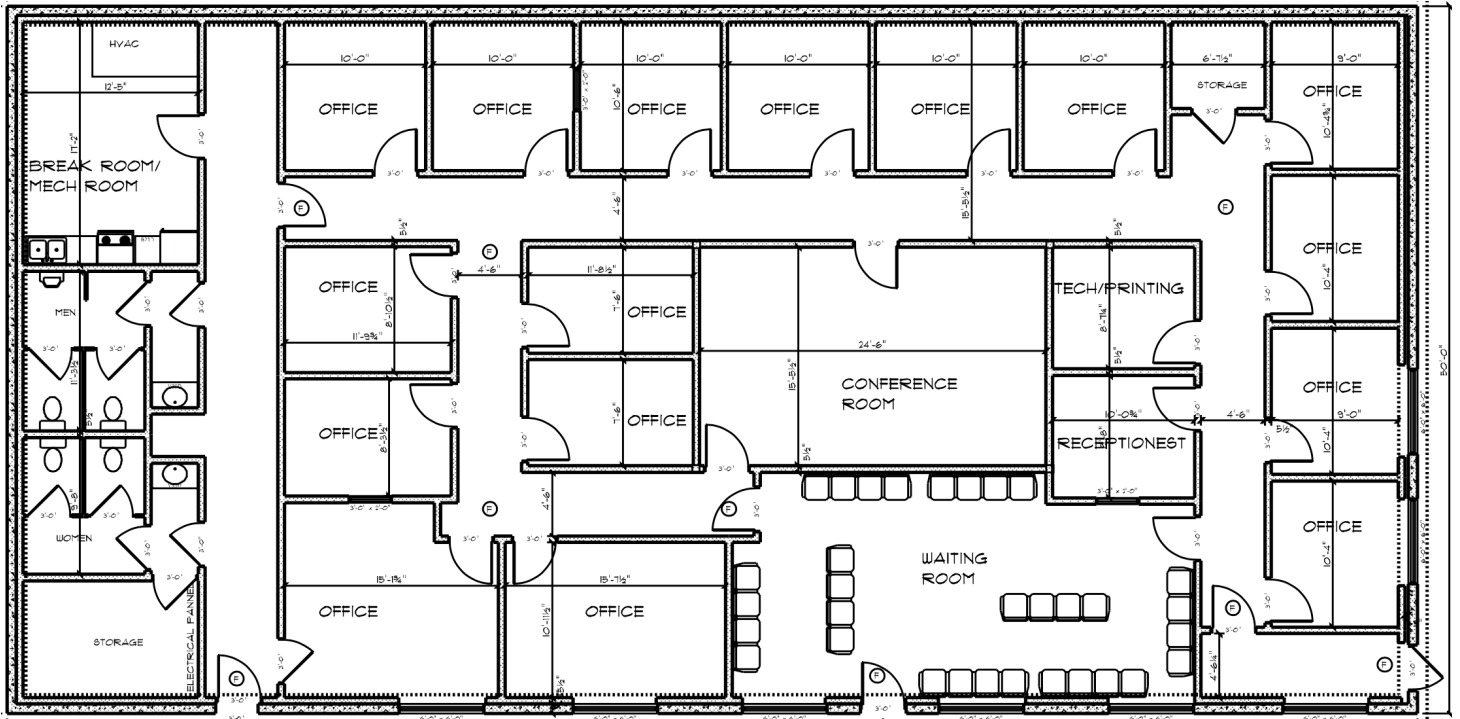
- Ashrose Plaza sits right off of US 127 South, one of the highest trafficked in Frankfort.
- Center boasts a variety of tenants including professional offices, retail, restaurant, and medical
- 2 miles north of I-64 at the west side Frankfort exit
- Ample parking

1,150 SF



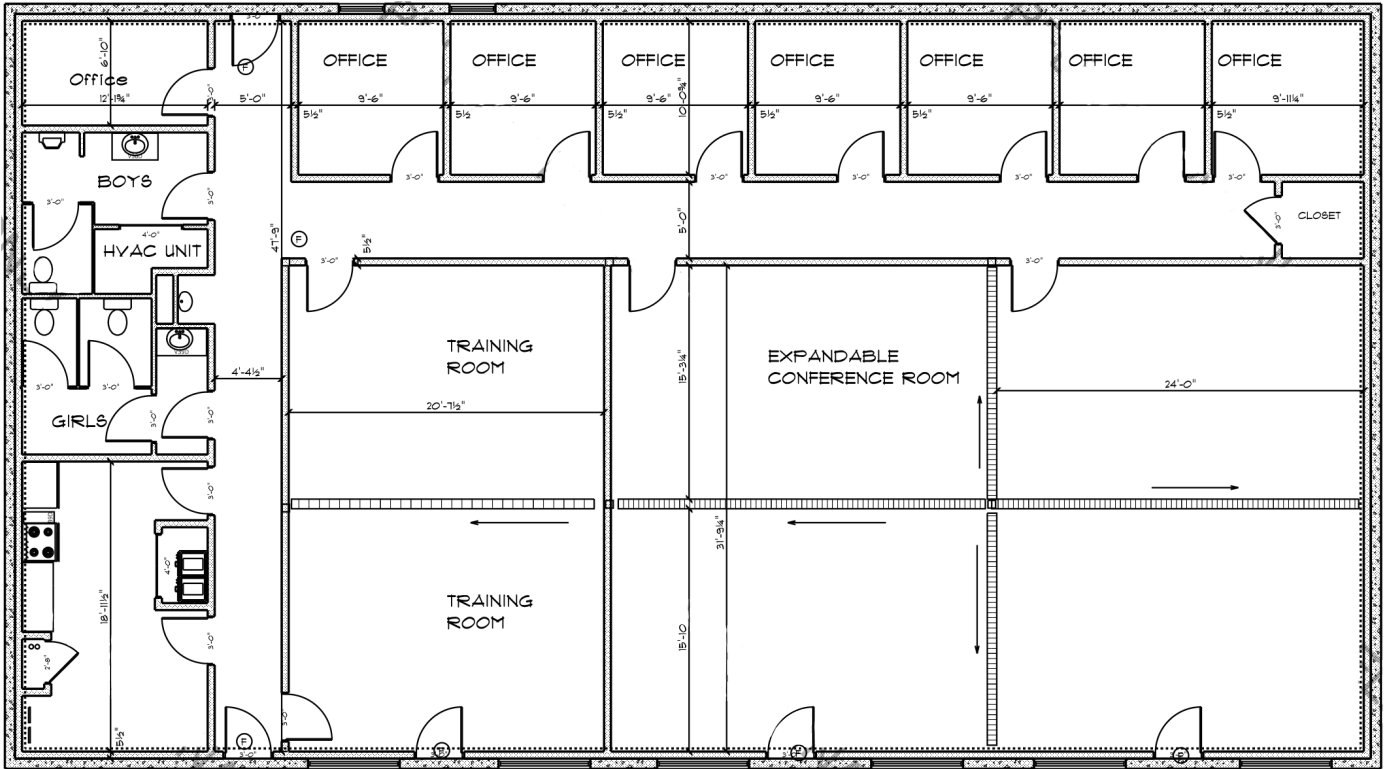
- Currently built as open retail space with private office and restroom.

5,000 SF



- Men's/Women's restrooms
- Breakroom/Kitchenette
- Most offices can be re-configured

4,500 SF



- Men's/Women's restrooms
- Breakroom/Kitchenette
- Most offices can be re-configured
- Collapsible walls for customized meeting space