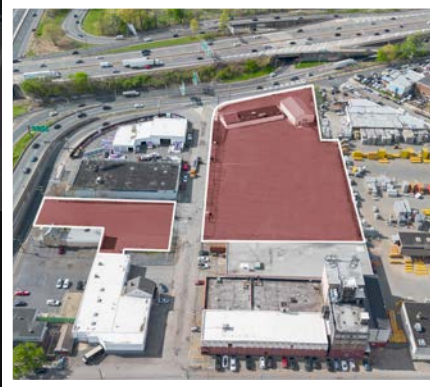
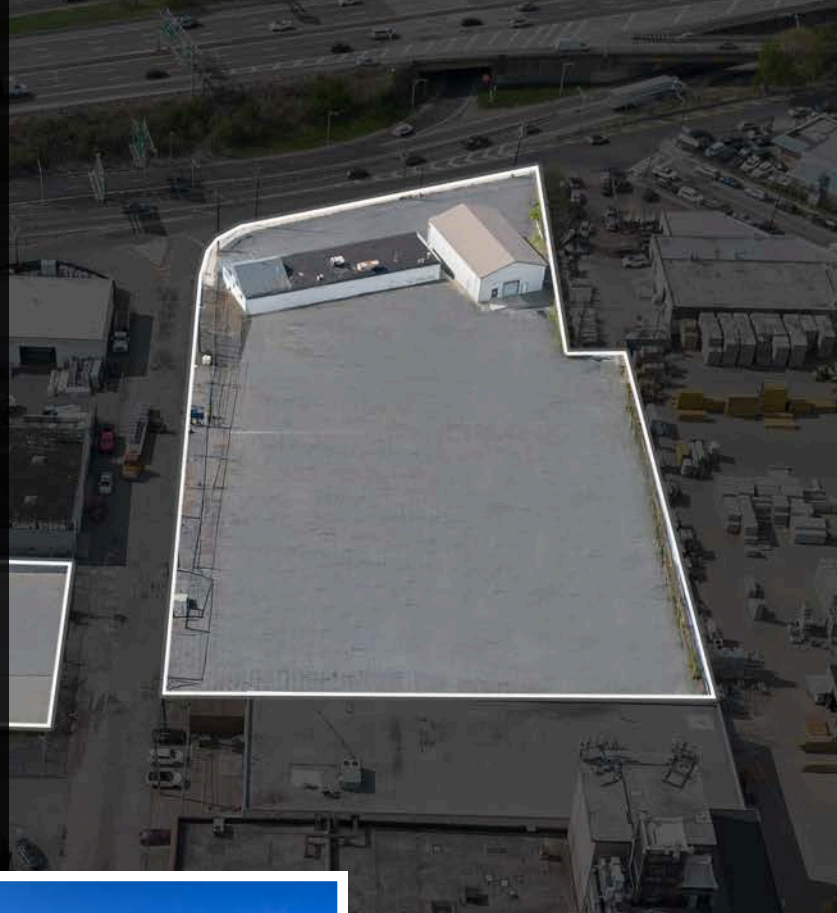


EMILY ABDY
REALTY GROUP SINCE 1959

FOR LEASE

ROUTE 80
INDUSTRIAL OUTDOOR
STORAGE FACILITY

+/- 3.3 ACRE PROPERTY



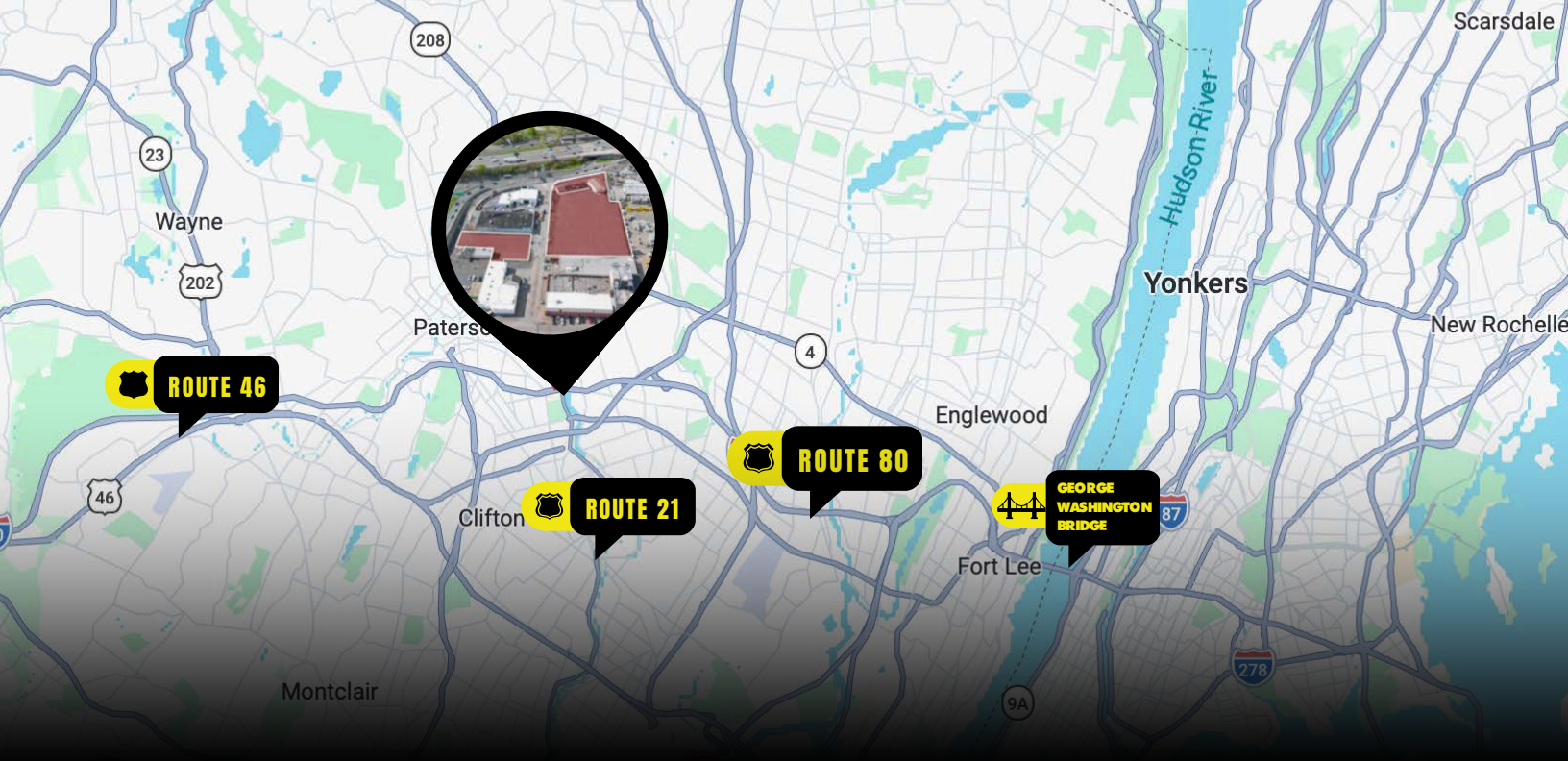
3,000 SF SITUATED ON 3.3 ACRES AT THE HIGHLY VISIBLE INTERSECTION OF ROUTE 80 AND 20/21, JUST 12 MILES FROM NYC. THE PROPERTY IS NEWLY PAVED, FULLY FENCED, AND WELL-LIT, OFFERING A SECURE AND FUNCTIONAL SPACE FOR A WIDE RANGE OF INDUSTRIAL USES. THIS SITE IS IDEAL FOR CONTRACTORS, FLEET STORAGE AND/OR HEAVY EQUIPMENT. SURROUNDED BY ESTABLISHED HEAVY INDUSTRIAL TENANTS, IT PROVIDES A STRATEGIC LOCATION FOR BUSINESSES SEEKING CONVENIENCE, ACCESSIBILITY, AND FLEXIBILITY.

1065 MARKET ST, PATERSON, NJ 07513

EMILY ABDY
REALTY GROUP SINCE 1959

RICHARD ABDY
C. 973-632-7307
richard@abdyrealty.com

KENNETH ABDY
C. 973-632-8602
ken@abdyrealty.com



PROPERTY HIGHLIGHTS



3,000 SQFT



3.3 ACRE PROPERTY



GREAT ACCESS TO RT 80 &
RT 20/21



24/7 ACCESS



NO RESTRICTIONS

CONTACT US

1065 MARKET ST,
PATERSON, NJ 07513

FOR LEASE

THE INFORMATION CONTAINED HEREIN HAS BEEN OBTAINED FROM SOURCES DEEMED RELIABLE; HOWEVER, NO GUARANTEE, WARRANTY, OR REPRESENTATION IS MADE AS TO ITS ACCURACY. NO REPRESENTATION IS MADE REGARDING ZONING, TITLE CONDITION, PROPERTY DIMENSIONS, OR ANY LEGAL OR ENVIRONMENTAL MATTERS. PROSPECTIVE PARTIES SHOULD CONSULT THEIR OWN LEGAL COUNSEL FOR VERIFICATION. TERMS AND CONDITIONS ARE SUBJECT TO CHANGE WITHOUT NOTICE. SUBJECT TO ERRORS AND OMISSIONS.

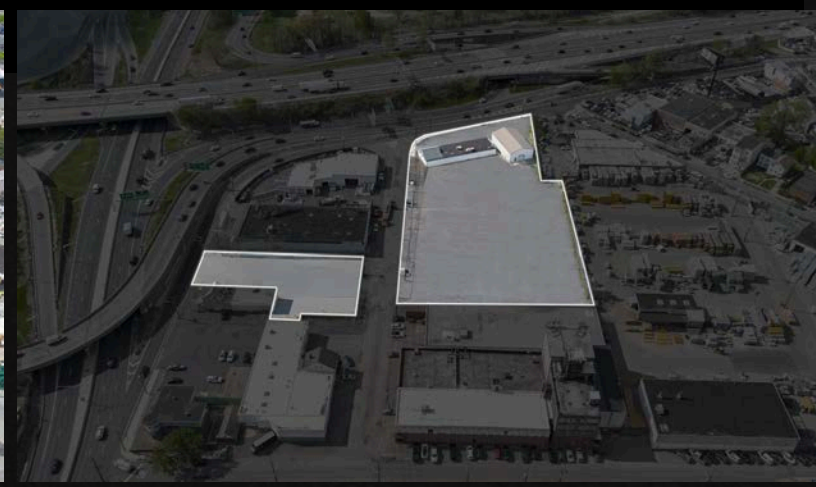
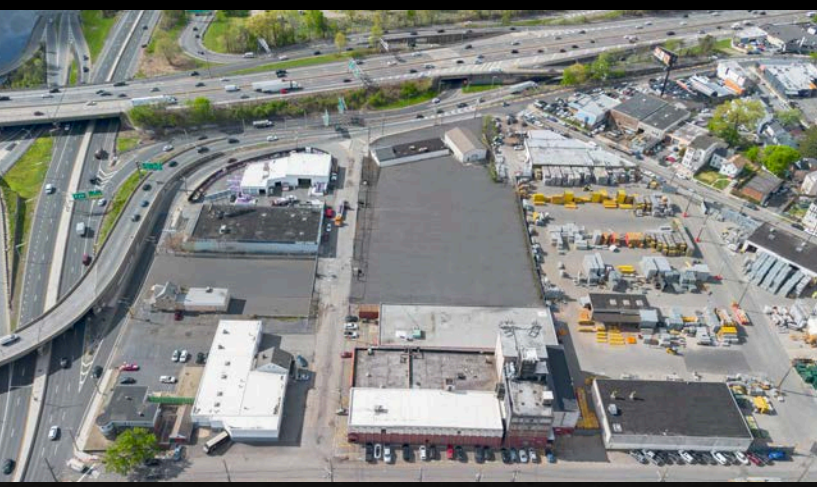
EMILY ABDY
REALTY GROUP SINCE 1959

RICHARD ABDY
C. 973-632-7307
richard@abdyrealty.com

KENNETH ABDY
C. 973-632-8602
ken@abdyrealty.com

EMILY ABDY

REALTY GROUP SINCE 1959



THE INFORMATION CONTAINED HEREIN HAS BEEN OBTAINED FROM SOURCES DEEMED RELIABLE; HOWEVER, NO GUARANTEE, WARRANTY, OR REPRESENTATION IS MADE AS TO ITS ACCURACY. NO REPRESENTATION IS MADE REGARDING ZONING, TITLE CONDITION, PROPERTY DIMENSIONS, OR ANY LEGAL OR ENVIRONMENTAL MATTERS. PROSPECTIVE PARTIES SHOULD CONSULT THEIR OWN LEGAL COUNSEL FOR VERIFICATION. TERMS AND CONDITIONS ARE SUBJECT TO CHANGE WITHOUT NOTICE. SUBJECT TO ERRORS AND OMISSIONS.

EMILY ABDY

REALTY GROUP SINCE 1959

RICHARD ABDY
C. 973-632-7307
richard@abdyrealty.com

KENNETH ABDY
C. 973-632-8602
ken@abdyrealty.com