

# MANCHESTER BUSINESS PARK

825 S. Kelly, Suite 170, Edmond, OK 73003

OFFICE SPACE FOR SUBLEASE

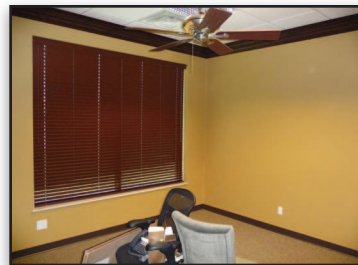
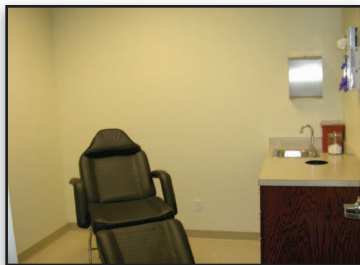


Price Edwards & Company  
210 Park Ave. Suite 1000  
Oklahoma City, OK 73102  
Phone: (405) 843-7474  
Fax: (405) 236-1849  
www.priceedwards.com



## ***Building Profile and Amenities:***

This available sublease is in a brand new garden-style office complex in west Edmond. The space contains 2,500 square feet MOL, hardwood entry, crown molding, 4 exam rooms with water, a break room, two ADA restrooms and a large administrative/file office. This space was gently used by a plastic surgeon and is move-in ready.



**For more information, contact:**  
**Derek James** [djames@priceedwards.com](mailto:djames@priceedwards.com)  
**(405) 843-7474**

# MANCHESTER BUSINESS PARK

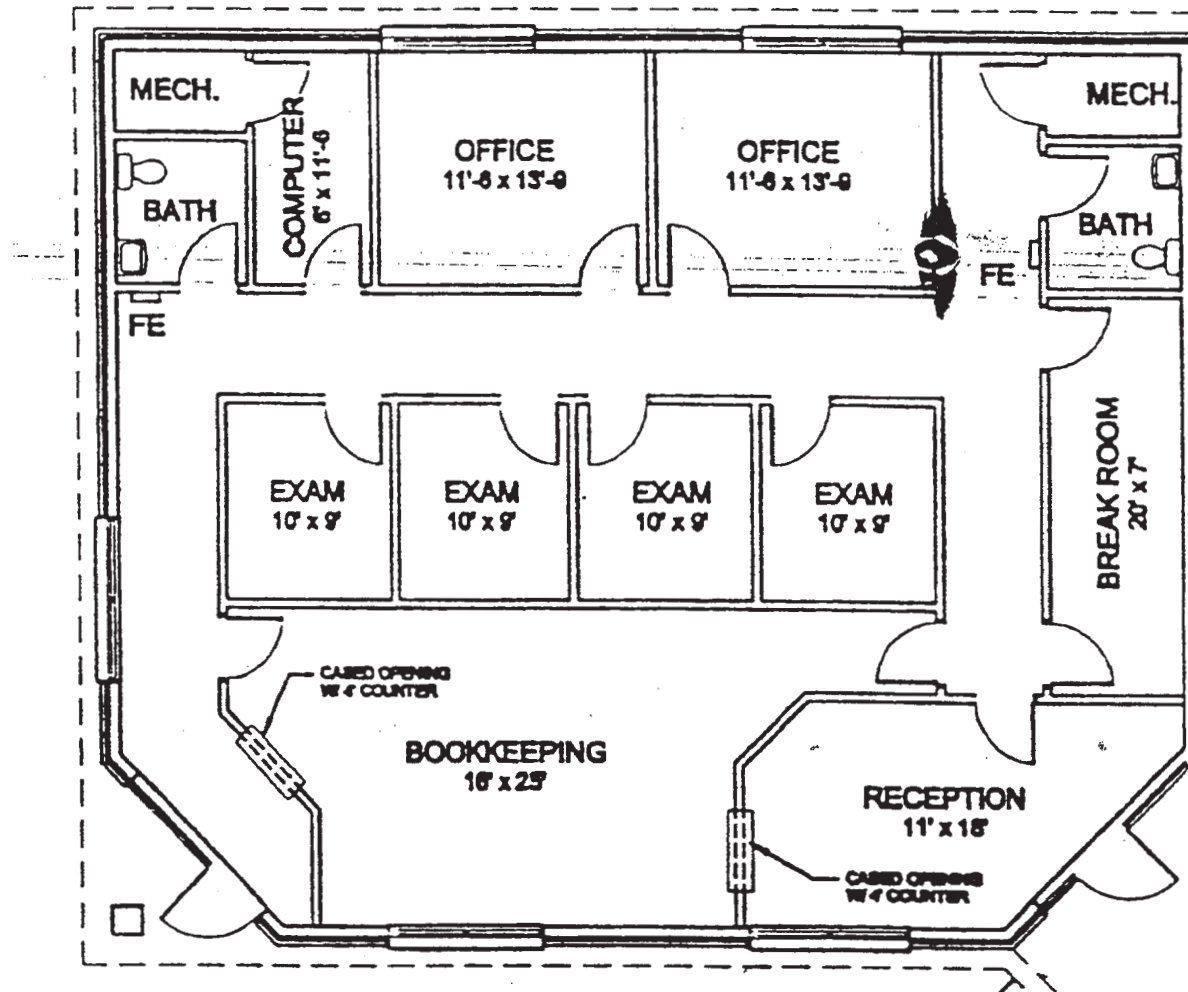
825 S. Kelly, Suite 170, Edmond, OK 73003

OFFICE SPACE FOR SUBLEASE



Price Edwards & Company  
210 Park Ave. Suite 1000  
Oklahoma City, OK 73102  
Phone: (405) 843-7474  
Fax: (405) 236-1849  
www.priceedwards.com

Suite 170  
+/- 2,500 RSF



The information above has been obtained from sources believed reliable. While we do not doubt its accuracy, we have not verified it and make no guarantee, warranty, or representation about it. You and your legal and technical advisors should conduct a careful, independent investigation of the property to determine to your satisfaction to the suitability of the property for your needs.