

COMMERCE BANK TOWER

2,479 SF 1st FLOOR RETAIL SPACE

In Class A+ New Clayton Office Building



COMMERCE BANK TOWER

Expansive Window Line

+ Great visibility along Meramec Ave



Prominent Front Door Entry

Portico features travertine stone and bronze "Divided Circles" sculpture by British artist Barbara Hepworth



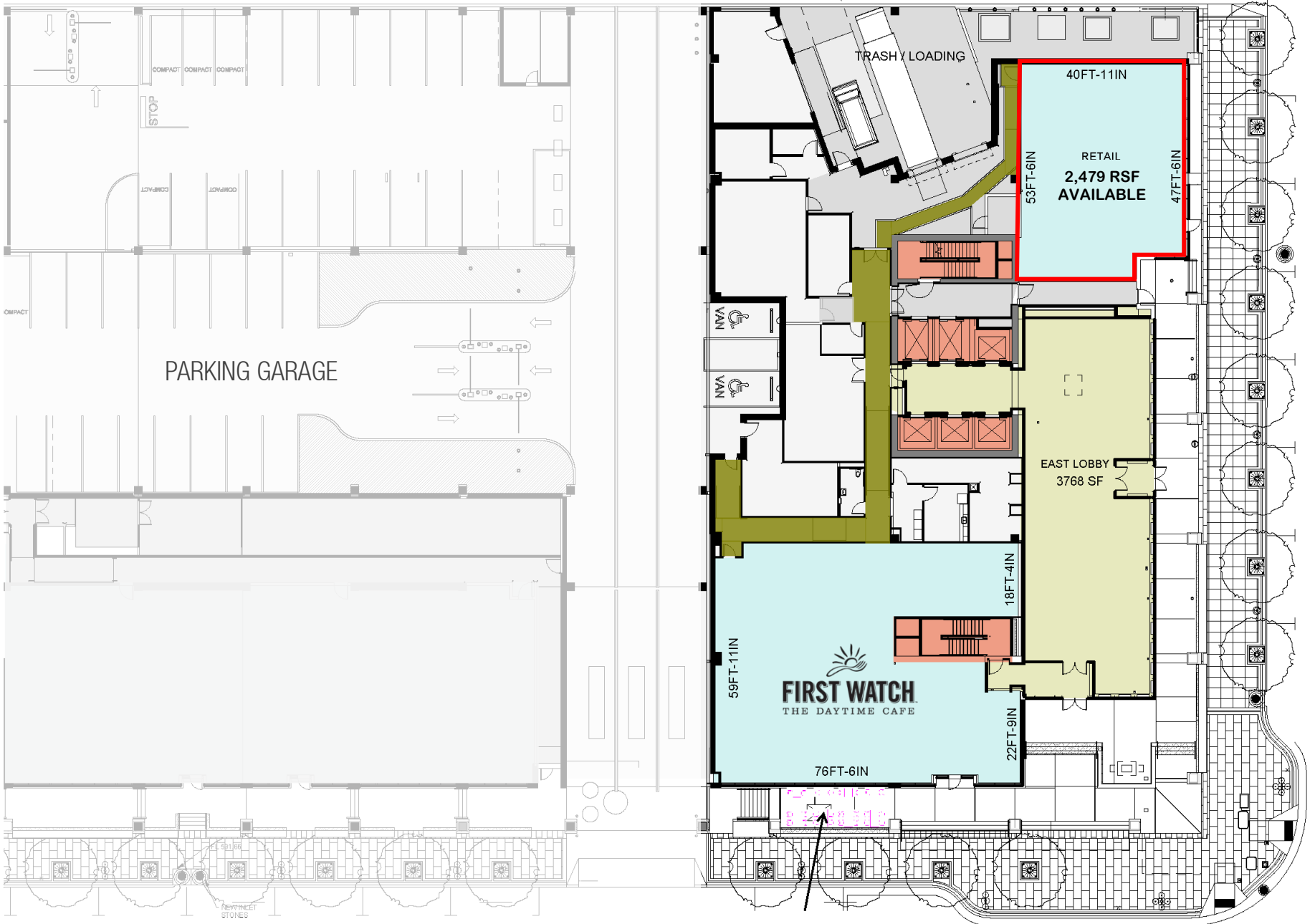
Retail serving the thriving Clayton CBD

- First floor retail in new Class A+ 15-story office building
- One space available: 2,479 RSF
- Frontage on Meramec Ave
- On-site visitor parking
- Join First Watch Café on the ground floor
- Office tenants Husch Blackwell, Commerce Bank Executive Offices, Varsity Tutors and Eagle Capitol occupy the upper floors
- For Lease: \$36.00 psf, NNN



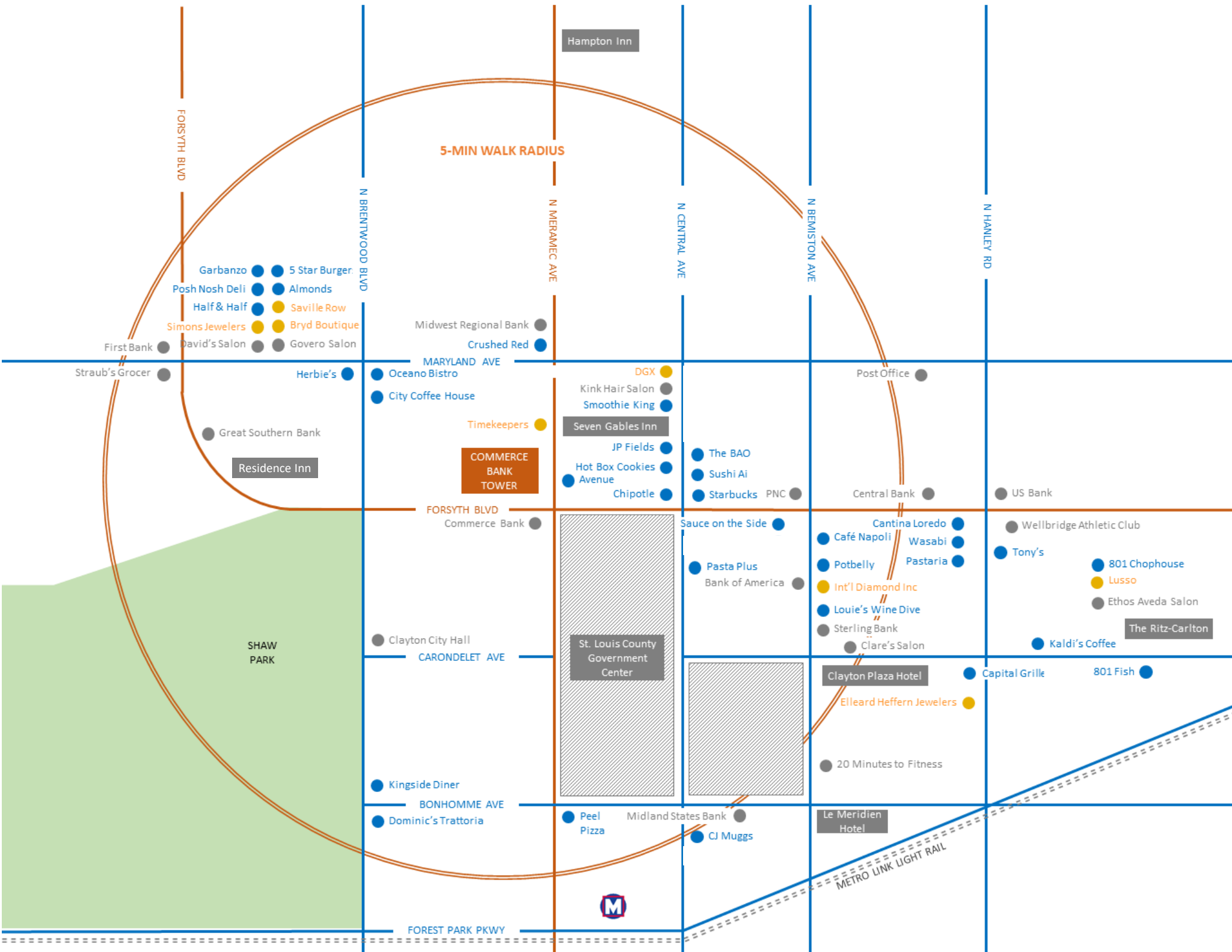
COMMERCE BANK TOWER

Main Floor Plan: Lobby, Parking & Retail



FORSYTH BLVD

MERRIMEC AVE



5-MIN WALK RADIUS

- Garbanzo ● 5 Star Burger
- Posh Nosh Deli ● Almonds
- Half & Half ● Saville Row
- Simons Jewelers ● Bryd Boutique
- David's Salon ● Govero Salon

Hampton Inn

Midwest Regional Bank

Crushed Red

MARYLAND AVE

Straub's Grocer

Herbie's

Oceano Bistro

City Coffee House

DGX

Kink Hair Salon

Smoothie King

Seven Gables Inn

JP Fields

Hot Box Cookies Avenue

Chipotle

The BAO

Sushi Ai

Starbucks

PNC

Post Office

Great Southern Bank

Residence Inn

COMMERCE BANK TOWER

FORSYTH BLVD

Commerce Bank

Sauce on the Side

Cantina Loredo

Café Napoli

Potbelly

Int'l Diamond Inc

Louie's Wine Dive

Bank of America

Sterling Bank

Clare's Salon

Clayton Plaza Hotel

Elleard Heffern Jewelers

20 Minutes to Fitness

US Bank

Wellbridge Athletic Club

Tony's

801 Chophouse

Lusso

Ethos Aveda Salon

The Ritz-Carlton

Kaldi's Coffee

Capital Grille

801 Fish

Clayton City Hall

CARONDELET AVE

St. Louis County Government Center

Kingside Diner

BONHOMME AVE

Dominic's Trattoria

Peel Pizza

Midland States Bank

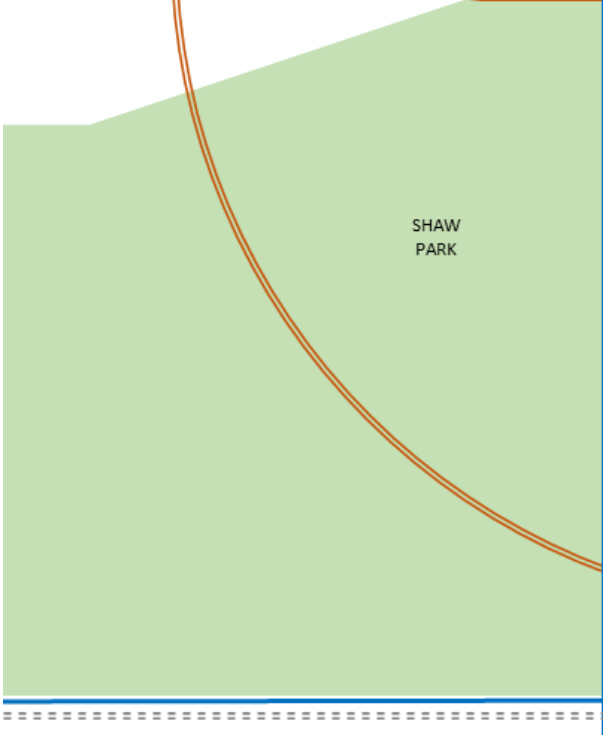
CJ Muggs

Le Meridien Hotel

FOREST PARK PKWY



METRO LINK LIGHT RAIL





Peter Sheahan

Principal, NAI DESC0

psheahan@naidesco.com

Direct: 314.994.4081

Mobile: 314.420.3095

A photograph of a modern building with a glass facade and a sidewalk. A tree is planted in a brick-lined area on the sidewalk. A white SUV is parked on the street to the left. The building has a grey metal frame and large glass windows reflecting the sky and surrounding environment. The sidewalk is made of large, light-colored concrete tiles. A tree is planted in a brick-lined area on the sidewalk. A white SUV is parked on the street to the left.

COMMERCE BANK TOWER