

The Colliers logo is located in the top right corner of the image. It consists of the word "Colliers" in a white serif font, centered within a blue rectangular box with rounded corners. Below the text, there are three horizontal lines in yellow, red, and blue.A photograph of a modern, single-story office building with a light-colored stucco and brick facade. The building has large windows and a flat roof. The address "9280" is visible on the corner, and the phrase "Your Sign Here" is written in large white letters along the side of the building. The building is surrounded by a well-maintained lawn, shrubs, and a paved sidewalk. The sky is clear and blue.

9280
Your Sign Here

Available Office Suite

Kyrene Corporate Center

9280 S Kyrene Rd | Tempe, AZ 85284

For Lease | ±2,929 SF - ±6,312 SF

Michael Marsh, CCIM

Vice President

+1 602 222 5177

michael.marsh@colliers.com

Matt Baniszewski

Vice President

+1 602 222 5176

matt.baniszewski@colliers.com

Kyrene Corporate Center

9280 S Kyrene Rd | Tempe, AZ 85284

Project Highlights

- Modern architectural design and detail
- Excellent frontage on Kyrene Rd with easy ingress/egress
- Located 3/4 miles east of I-10
- Minutes from Phoenix Sky Harbor International Airport
- Numerous amenities within a five-minute drive
- Major employers include Intel, Motorola and Honeywell

Property Summary

Project ±86,160 SF / 11.5 Acres

Year Built 1998

Parking 5.00/1,000 SF

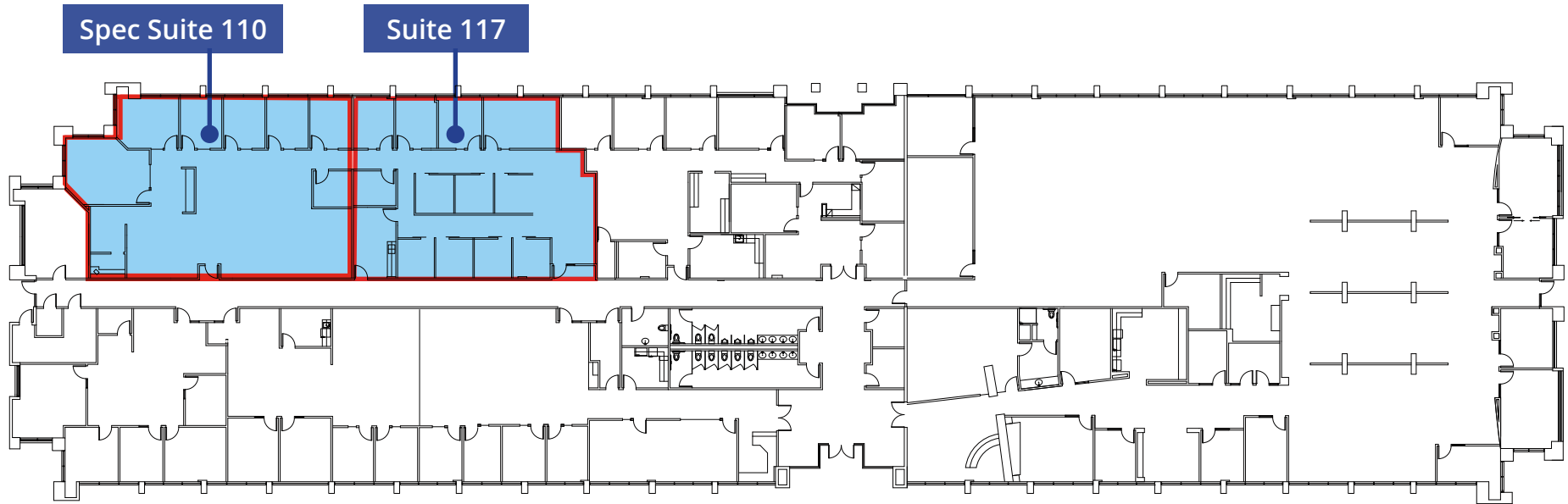
Zoning GID, Tempe

Lease Rate \$24.50 PSF FSG



Kyrene Corporate Center

9280 S Kyrene Rd | Tempe, AZ 85284



Availability

Spec Suite	110	±3,383 SF
Suite	117	±2,929 SF
Lease Rate	\$24.50 PSF FSG	

Kyrene Corporate Center

9280 S Kyrene Rd | Tempe, AZ 85284

Michael Marsh, CCIM

Vice President

+1 602 222 5177

michael.marsh@colliers.com

Matt Baniszewski

Vice President

+1 602 222 5176

matt.baniszewski@colliers.com

Colliers

2390 East Camelback Road

Suite 100

Phoenix, AZ 85016

