

# MARKETPLACE SQUARE

251-287 WASHINGTON STREET • ATTLEBORO, MASSACHUSETTS



## MERGED SOUTH ATTLEBORO SQUARE & MAYFAIRE CENTRE

### LOCATION

Strategically located at the intersection of Washington Street (Route 1) and May Street - a high-traffic retail corridor near Route 123, offering outstanding visibility & easy access for both local shoppers & regional traffic.



### SPACE (GLA)

441,041 SF

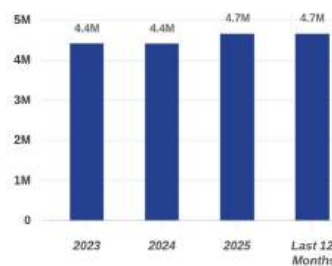
### NEARBY

Emerald Square (Macy's, JC Penney), Target, Old Navy, Marshall's, Savers, Michael's, Pet Smart, Walmart, Lowe's, Dicks Sporting Goods, DSW, Panera Bread, Five Below

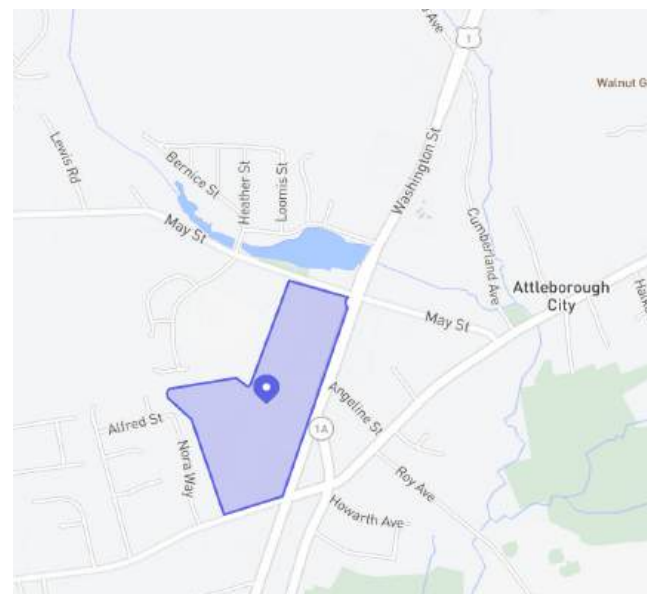


### FOOT TRAFFIC TREND

Visits YoY: **+5.7%**  
Visits Yo2Y: **+5.6%**  
Visits Yo3Y: **+5.4%**



*94.26% of visits are from visitors who visited at least two times*



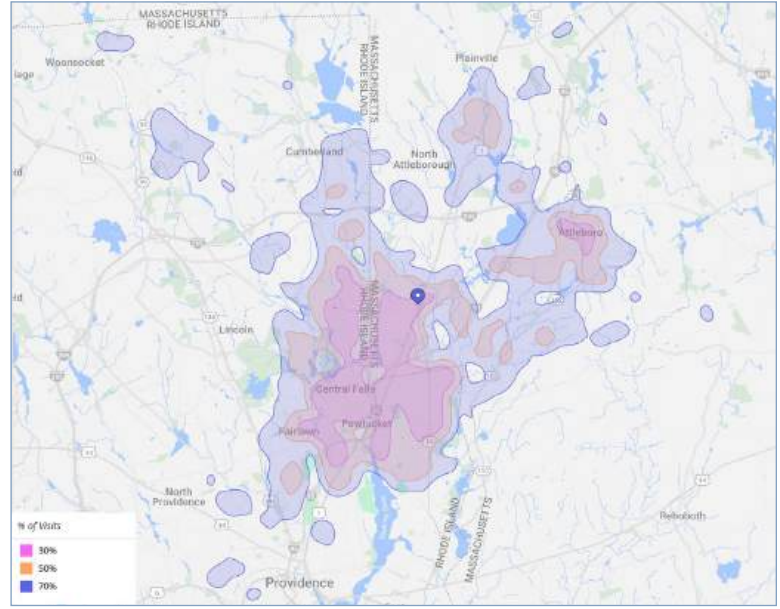
## LOCATION & DEMOGRAPHICS

TRAFFIC COUNT	CARS/DAY
Washington St. (Route 1)	12,400
Route 95	95,500
Route 295	60,900

LAT/LON	PARKING
41.925902/-71.3595065	1,936

2025	1-MILE	3-MILE	5-MILE
<i>Estimated Population</i>	4,566	81,575	209,659
<i>Estimated Avg. HH Income</i>	\$141,052	\$110,865	\$111,801

## TRUE TRADE AREA



## TRADE MAP



SITE PLAN



AVAILABLE RETAIL		
	SQUARE FEET	WIDTH x LENGTH
RETAIL A	968	10'-5" x 92'-2"
RETAIL B	5,888	

TENANTS		
Ace Liquors	Chuck E. Cheese	Sally
Advanced Auto Parts	Cosmo Prof	Sassy Nails
Anytime Fitness	Dave's Hot Chicken	Sola Salon Studios
Aspen Dental	First Watch	Staples
Biolife Plasma Services	Harbor Freight Tools	Stop & Shop
BJ's Wholesale Club	Matress Firm	Town Fair Tire
Boot Barn	Papa Gino's	Wayfair Outlet
Burlington	Petco	
CAVA	Rent-A-Center	

# Carpionato GROUP

1414 Atwood Avenue • Johnston, RI • 02919 • 401.273.6800 • [www.CarpionatoGroup.com](http://www.CarpionatoGroup.com)



## FOR MORE INFORMATION, CONTACT:

Peter Flynn • 401.273.6800 x141 • [PFlynn@CarpionatoGroup.com](mailto:PFlynn@CarpionatoGroup.com)

Joe Pierik • 401.273.6800 x126 • [JPierik@CarpionatoGroup.com](mailto:JPierik@CarpionatoGroup.com)