

TAMPA DISTRIBUTION CENTER

TAMPA
TAMPA EAST SIDE

4740 TRANSPORT DRIVE
TAMPA, FL 33605



FOR LEASE

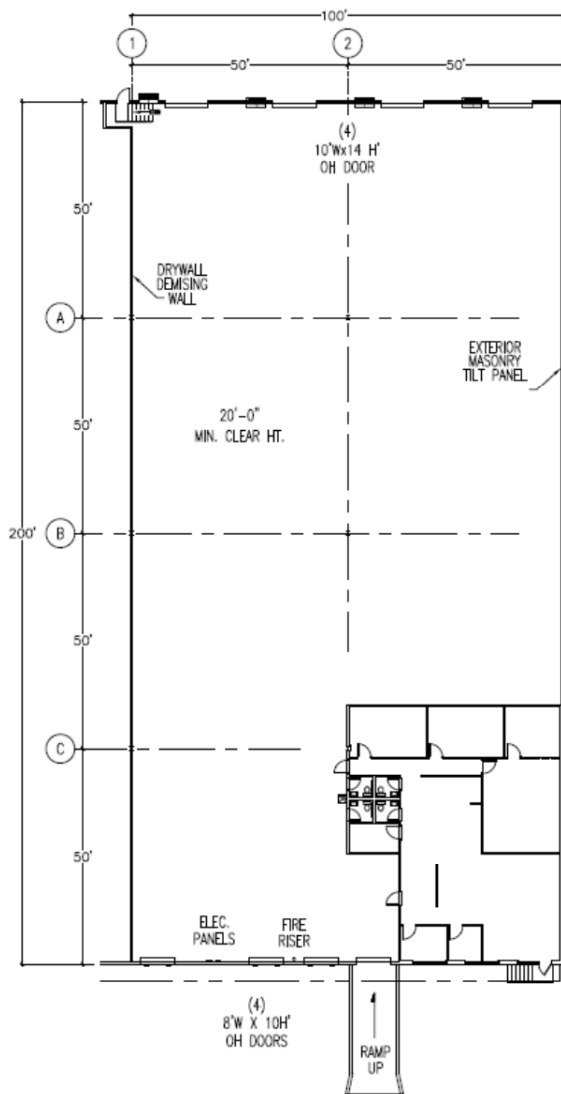
BLDG 6 | SUITE 4740

20,000 SF



LEASED BY





LOCATION OVERVIEW

Tampa Distribution Center, situated at 4740 Distribution Drive, Tampa, FL 33605, is an industrial property suited for warehousing and distribution users. This facility provides a solution for businesses in need of a strategically located and highly efficient distribution center within Tampa's industrial hub, offering immediate access to I-4, I-75, the Lee Roy Selmon Expressway, and Adamo Drive (SR 60).

SR 60	0.3 miles	1 minute
I-4	0.8 miles	3 minutes
U.S. Hwy. 301	2.9 miles	7 minutes
Selmon Expwy	3.0 miles	8 minutes
Port Tampa Bay	4.9 miles	12 minutes
I-75	5.5 miles	15 minutes
Tampa Int'l Airport	10.5 miles	32 minutes

BLDG 6 | SUITE 4740

TOTAL SF	20,000
OFFICE SF	± 2,640
OCCUPANCY	Available Now
CLEAR HEIGHT	20'
LOADING	3 Dock-High Doors, 1 Drive-in Ramp
RAIL	4 Rail Doors
POWER	3 Phase, 120/208v, 150 Amp
SPRINKLERS	Wet Pipe

CONTACT INFORMATION

4740 TRANSPORT DRIVE
TAMPA, FL 33605

Sam Korolos

sam.korolos@cushwake.com
(704) 989 1327

Lisa Ross, SIOR

lisa.ross@cushwake.com
(813) 760 3209

Melissa Watterworth

melissa.watterworth@cushwake.com
(813) 599 2190

Trey Carswell, SIOR

trey.carswell@cushwake.com
(813) 230 6131

This document is for informational purposes only and does not constitute an offer or acceptance of a lease. Any lease agreement must be in writing and signed by the landlord. No representations or warranties are made except as expressly stated in a signed lease. Information is provided "as is" and may be subject to errors or change without notice.



LEASED BY

