

# 623 REGIONAL ROAD

GREENSBORO, NC

**TWO NEW BUILDINGS**  
**±12,200 SF AND ±6,800 SF**

**\$15.50 PSF | NNN**

Delivery March 2027

**FOR  
LEASE**

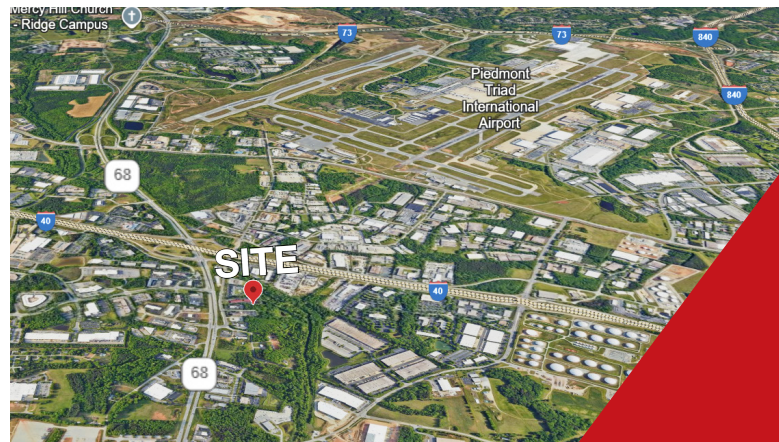
**Professional Flex Space**  
\*\* Subject to change

## PROPERTY HIGHLIGHTS

### New Flex Space Near Greensboro Airport

Looking for clean modern space for your business - this brand new flex space is perfect for design firms, electricians, engineers, plumbers, HVAC and other professionals. Spaces to be customized to fit your needs.

- Brand new buildings with quality finishes, 20' ceiling heights, 2 drive-in overhead doors/building, plus dedicated outdoor storage
- Just off I-40 - Easy drive to Greensboro, Winston-Salem, & High Point
- Built for trades and light industrial businesses.



**NAI Piedmont Triad**

Commercial Real Estate Services, World Wide

**WILL BLACKWELL, SIOR**  
BROKER  
336.345.1500  
wblackwell@naipt.com

**JASON SMITH**  
BROKER  
336.709.6745  
jsmith@naipt.com

348 N Elm Street - Greensboro, NC 27401 • naipt.com

# Building Design

Coming March 2027



This material may contain content generated with AI assistance and publicly sourced data. NAI Piedmont Triad makes every effort to verify the information but makes no warranties or representations regarding the accuracy, completeness, or reliability of the information. Independent verification of all details is strongly encouraged. Prices, terms, and availability are subject to change without prior notice.

**WILL BLACKWELL, SIOR**  
BROKER  
336.345.1500  
wblackwell@naipt.com

**JASON SMITH**  
BROKER  
336.709.6745  
jsmith@naipt.com