

4201 NW 37TH CT, MIAMI, FL 33142

MIA LOGISTICS CENTER

FOR LEASE

MULTIPLE SPACES AVAILABLE:
± 3,300 SF TO 14,000 SF

OWNED & OPERATED BY:



Kevin Perez

(786) 657-6736

kevin@thehypegroup.com

Raul Pino

(786) 503-5583

raul@thehypegroup.com

SPACES AVAILABLE

UNIT	SF AVAILABLE	MOVE-IN
3725	7,200 SF	Immediate Occupancy
3728	7,000 SF	Immediate Occupancy
4237-A	3,300 SF	Immediate Occupancy
4237-B	3,300 SF	Immediate Occupancy
4239	3,991 SF	Immediate Occupancy
4234	11,000 SF	Immediate Occupancy

REACH OUT FOR LEASING INFORMATION

Looking for a different size space?
Reach out—we may have flexible solutions available.



Kevin Perez
(786) 657-6736
kevin@thehypegroup.com

Raul Pino
(786) 503-5583
raul@thehypegroup.com

Pablo Vignolo
(305) 303-3837
pablo@thehypegroup.com

PROPERTY DETAILS

ABOUT THE PROPERTY

Prime Industrial Warehouse

Located on NW 37th Court, just minutes from Miami International Airport and major expressways. This 104,075 SF warehouse offers versatile space for a range of business needs. Features include multiple oversized grade-level doors, 18'–20' clear ceiling heights, ample parking, and a roof under warranty.

Professionally managed and positioned in the East Airport submarket, which provides excellent accessibility and growth potential for businesses seeking a prime location.

BUILDING HIGHLIGHTS



Industrial Warehouse with variety of spaces



Professionally managed



3,300 SF to 14,000 SF available



Expansive 18' - 20' clear ceiling height



Grade-level doors



Ample Parking Spaces



Roof Under warranty



East airport sub-market location



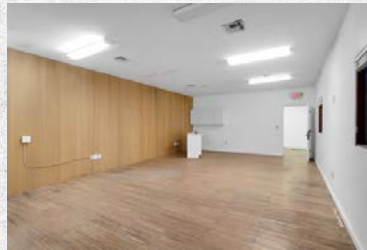
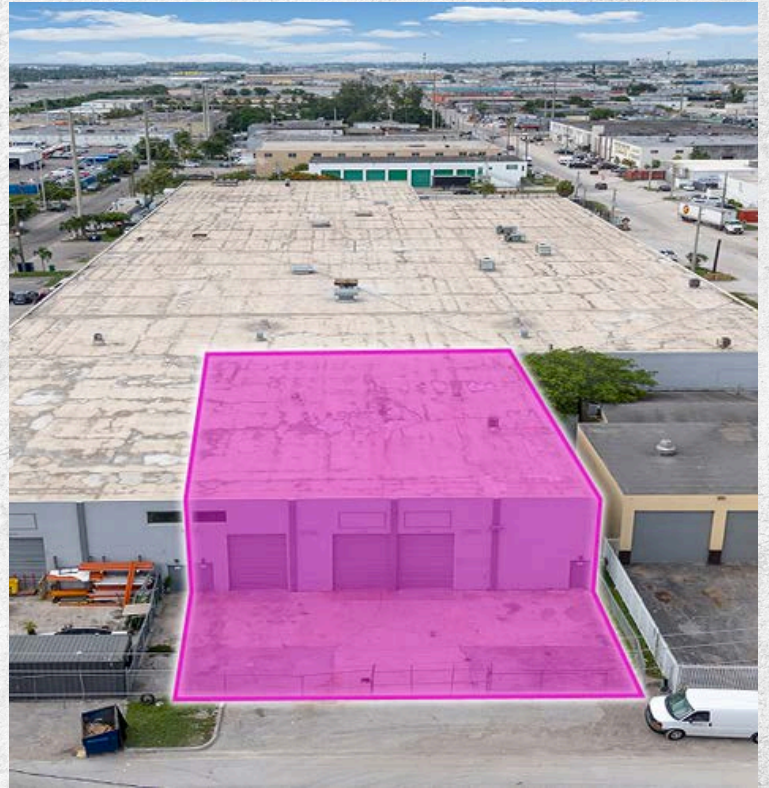
All electric is 3-phase 120/240V with a high leg; B phase is 240V to ground.

SPACE FEATURES

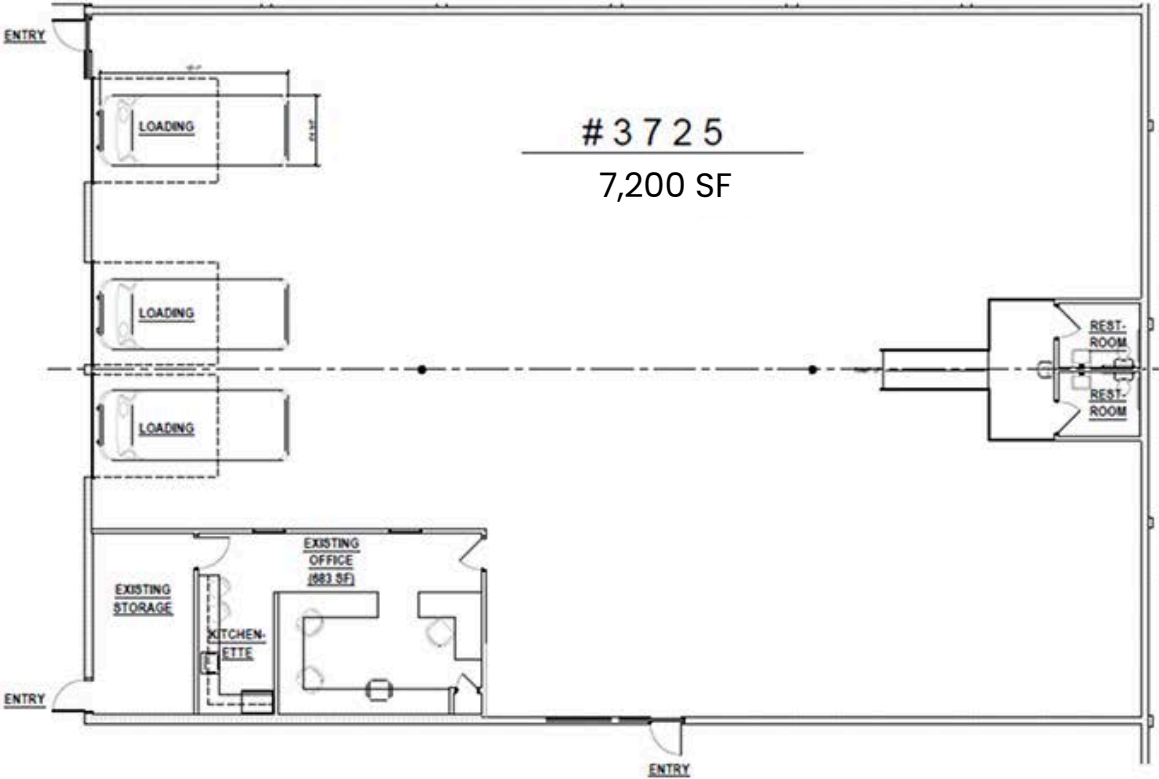
UNIT 3725

Features:

- 7,200 SF
- Flexible property layout divisible by two
- 3 Street level bay doors
- Gated yard space
- Dedicated private office space
- Expansive high ceilings



FLOOR PLAN | UNIT 3725



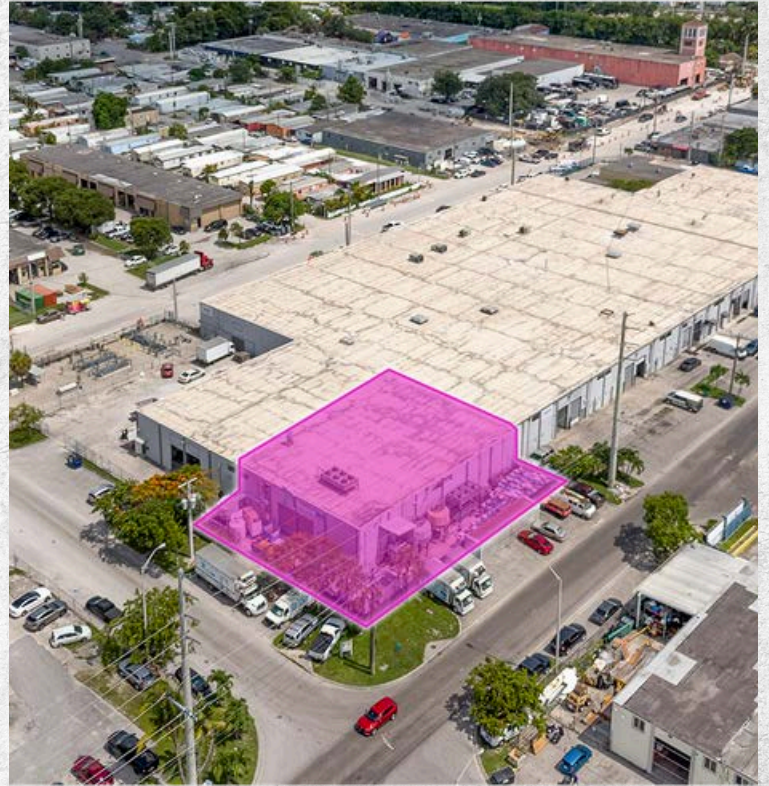
OVERALL FLOOR PLAN | UNIT #3725 | 7,200 SF

SPACE FEATURES

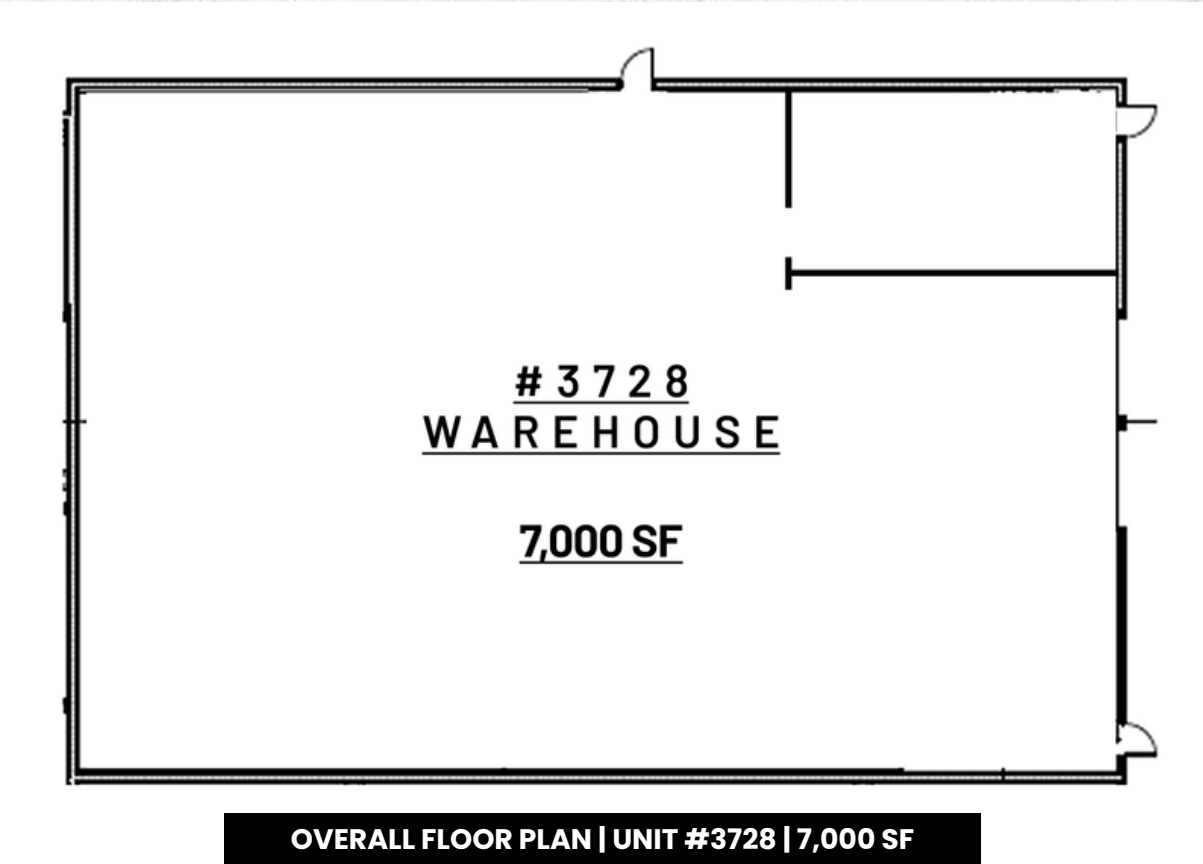
UNIT 3728

Features:

- 7,000 SF
- 2 Street level bay doors
- Office space available
- Private, fully secured loading and parking area
- Expansive high ceilings



FLOOR PLAN | UNIT 3728

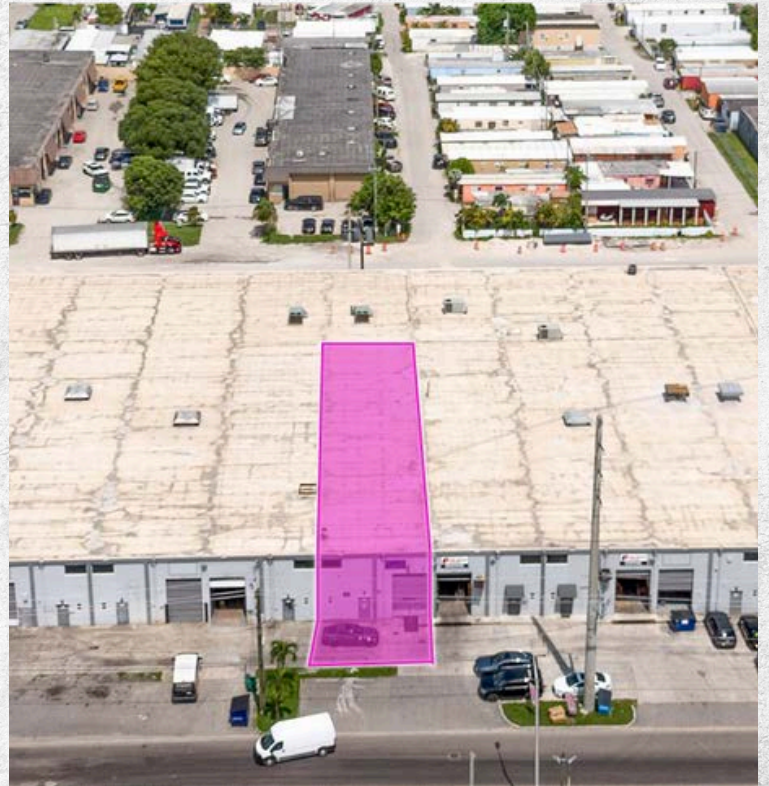


SPACE FEATURES

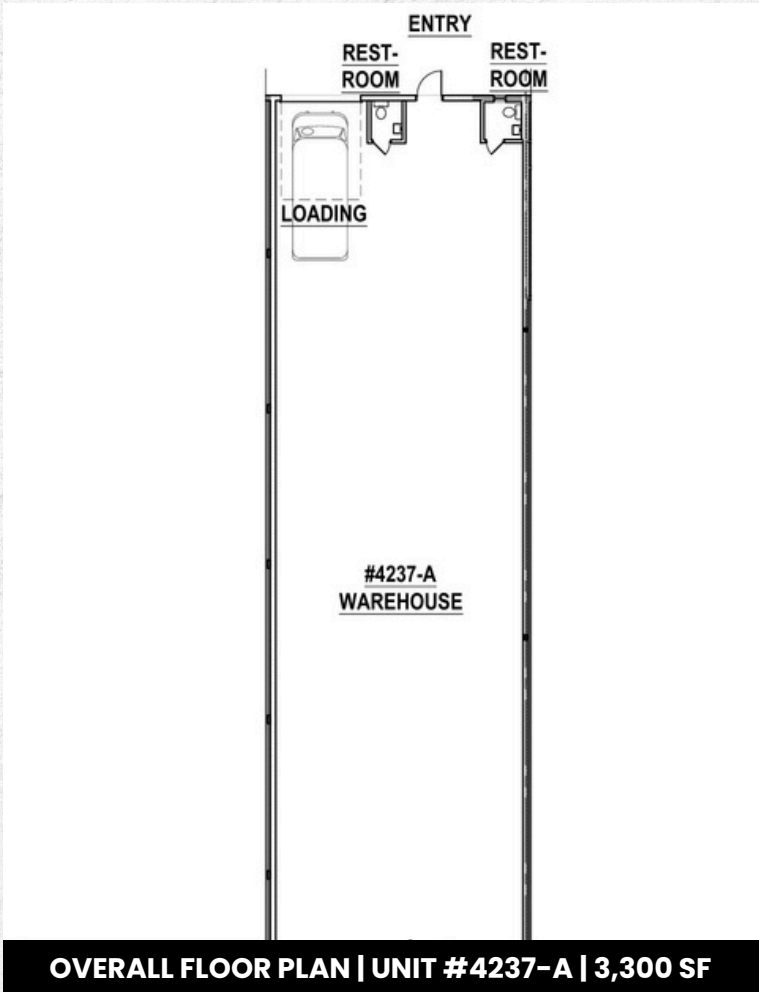
UNIT 4237-A

Features:

- 3,300 SF
- 1 Street level bay door
- Expansive high ceilings
- User-friendly and practical layout



FLOOR PLAN | UNIT 4237-A



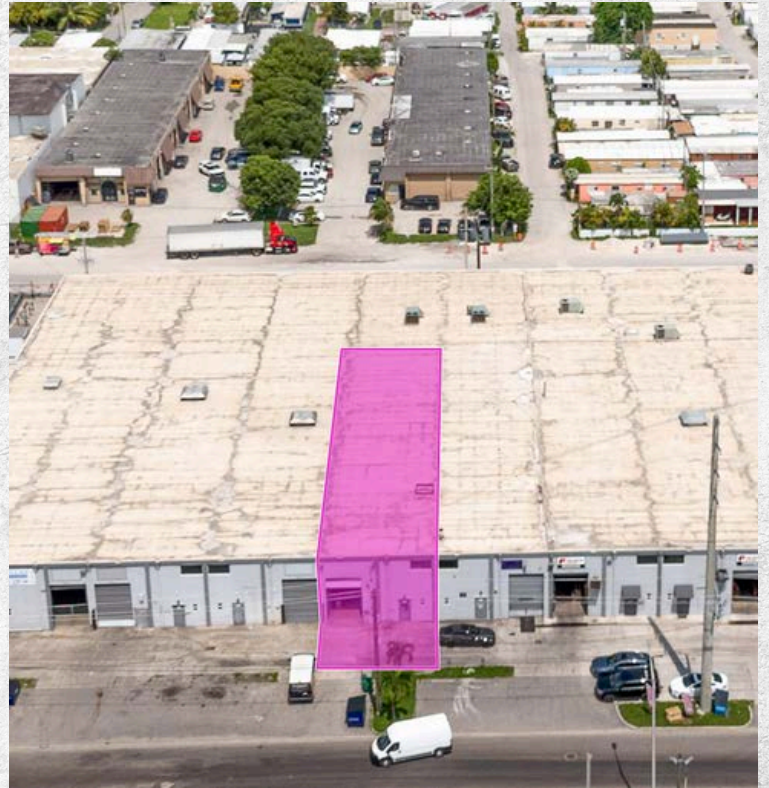
OVERALL FLOOR PLAN | UNIT #4237-A | 3,300 SF

SPACE FEATURES

UNIT 4237-B

Features:

- 3,300 SF
- 1 Street level bay door
- Expansive high ceilings
- User-friendly and practical layout



FLOOR PLAN | 4237-B



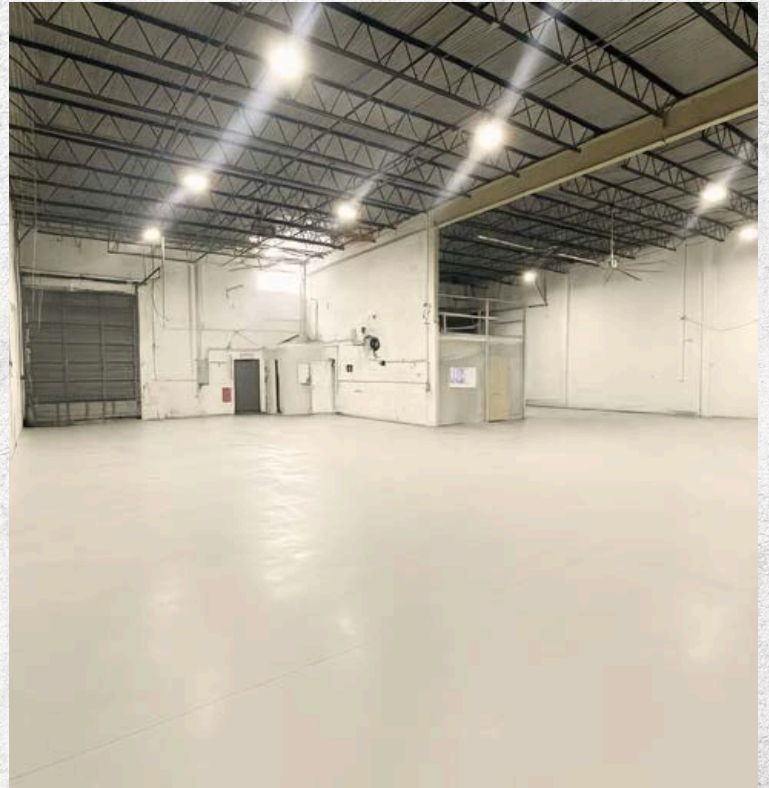
OVERALL FLOOR PLAN | UNIT #4237-B | 3,300 SF

SPACE FEATURES

UNIT 4239

Features:

- 3,991 SF
- Expansive high ceilings
- User-friendly and practical layout
- 2 Street level bay doors
- 8 parking spots



FLOOR PLAN | 4239



OVERALL FLOOR PLAN | UNIT #4239 | 3,991 SF

SPACE FEATURES

UNIT 4234

Features:

- 11,000 SF
- Office space available
- User-friendly and practical layout
- Bay doors on both sides of the building
- Significant parking





CONTACT US!

Kevin Perez
(786) 657-6736
kevin@thehypegroup.com

Raul Pino
(786) 503-5583
raul@thehypegroup.com

Pablo Vignolo
(305) 303-3837
pablo@thehypegroup.com

Disclaimer

All information provided in this marketing material is sourced from reliable channels and is subject to errors, omissions, changes, or withdrawal of listings from sale or lease without notice. All square footage, dimensions, floor plans, and technical specifications are approximate and should be independently verified.



www.thehypegroup.com



www.alliancehp.com