

FULLY FURNISHED OFFICE/WAREHOUSE WITH RACKING

10 JEWEL DRIVE

Wilmington, Massachusetts

10,213 SF Available



10 JEWEL DRIVE

Wilmington, Massachusetts

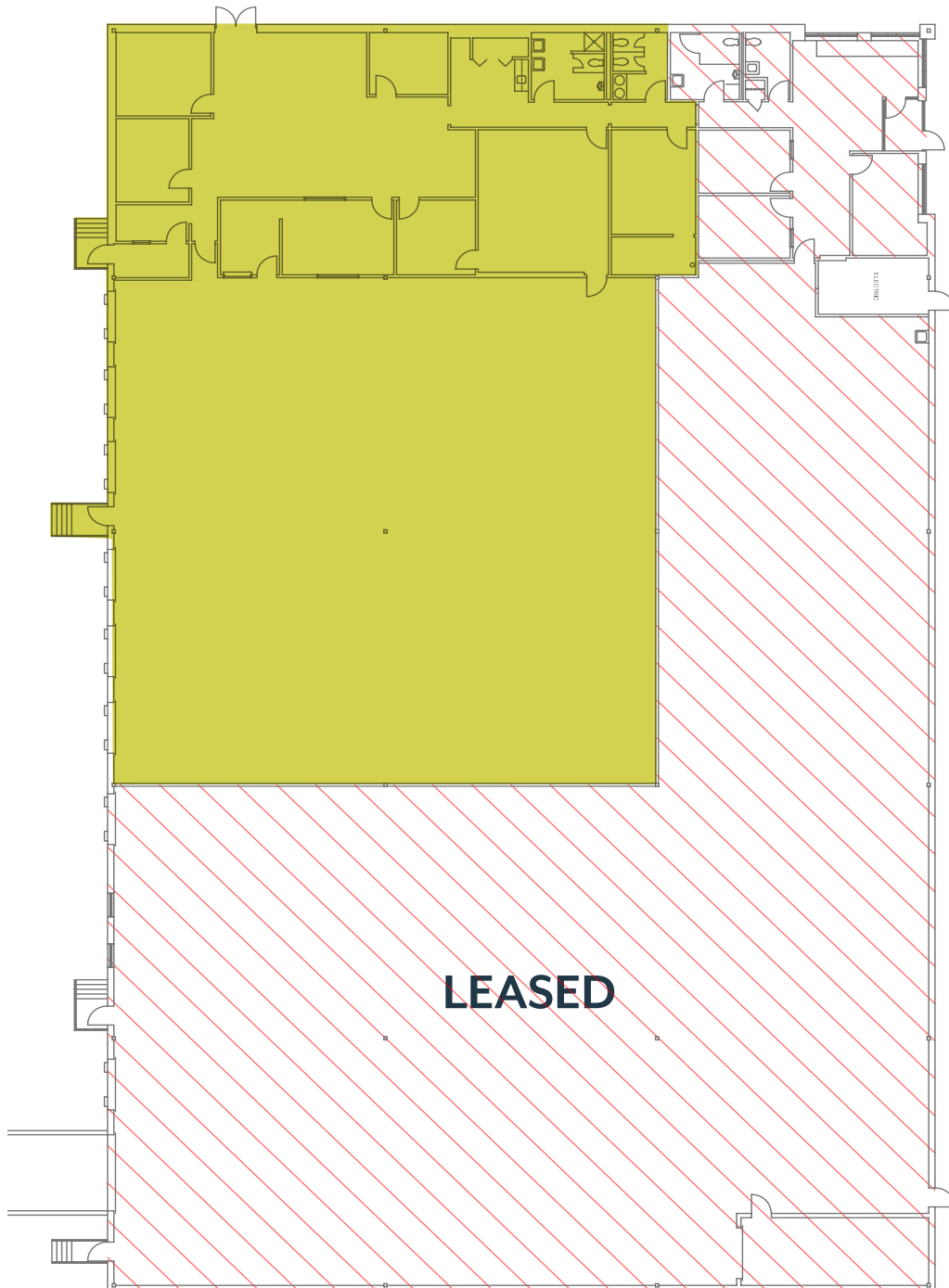


PROPERTY SPECIFICATIONS

AVAILABLE SF:	10,213 SF: -3,613 SF Office -6,600 SF Warehouse
BUILDING SIZE:	25,000 SF
ZONING:	(GI)- General Industrial
CLEAR HEIGHT:	16'
POWER:	400 amps, 480 volts, 3-phase
LAND AREA:	2.77 Acres
LOADING:	Six-(6) Tailboard Height Loading Docks with Dock Levelers
YEAR BUILT:	1982
COLUMN SPACING:	39' X 40'
PARKING:	2/1,000 SF
HVAC:	Office fully HVAC'd Warehouse-Heated

FLOOR PLAN | 10,213 SF

 = Available Space



INDUSTRIAL/OFFICE SPACE AVAILABLE

10 JEWEL DRIVE

Wilmington, Massachusetts



I-93	I-95	Anderson/Woburn	Downtown Boston	Logan Airport
2.1 mi	2.4 mi	2.7 mi	15.6 mi	16.8 mi

CONTACT US TO ARRANGE A TOUR

KEN OPPENHEIM

Executive Vice President

617.457.3301

koppenheim@hunnemanre.com

CHRIS CURLEY

Executive Vice President

617.457.3211

ccurley@hunnemanre.com

MIKE ALLEN

Senior Vice President

617.457.3276

mallen@hunnemanre.com



303 Congress Street, Boston, MA 02210 617.457.3400 www.hunnemanre.com

©2026 Hunneman. All rights reserved. All information has been obtained from sources believed reliable but no warranty or representation is verified for accuracy or completeness. Caution and independent investigation of property and information should be verified. Reliance on this information is at your own risk.