

HRI

HARTWELL REALTY
INCORPORATED

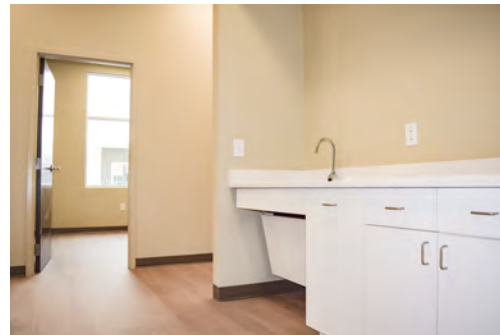
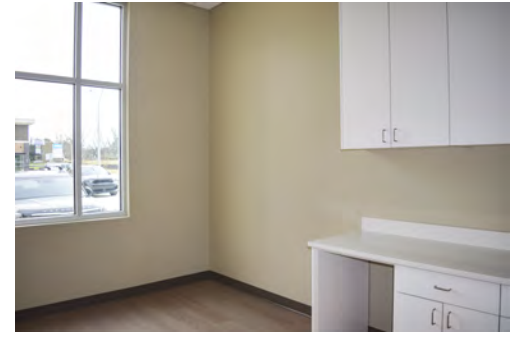
FOR LEASE

111 Logan Ct.
Angier, NC 27501



TURN KEY MEDICAL/ PROFESSIONAL OFFICE SPACE

- LOCATED ALONG HWY 55 WITH VPD OF 25,000 + IN HARNETT COUNTY, ONE OF THE FASTEST GROWING COMMUNITIES IN NORTH CAROLINA
- STAND ALONE MEDICAL CLINIC; IN MEDICAL OFFICE PARK
- FULLY BUILT OUT WITH SHARED BREAK ROOM



HRI

HARTWELL REALTY
INCORPORATED

Megan A. Pumarejo
Broker, Business Development
HARTWELL REALTY, INC.

512-230-5193 Direct
919-772-0170 Office
www.hartwellrealty.net

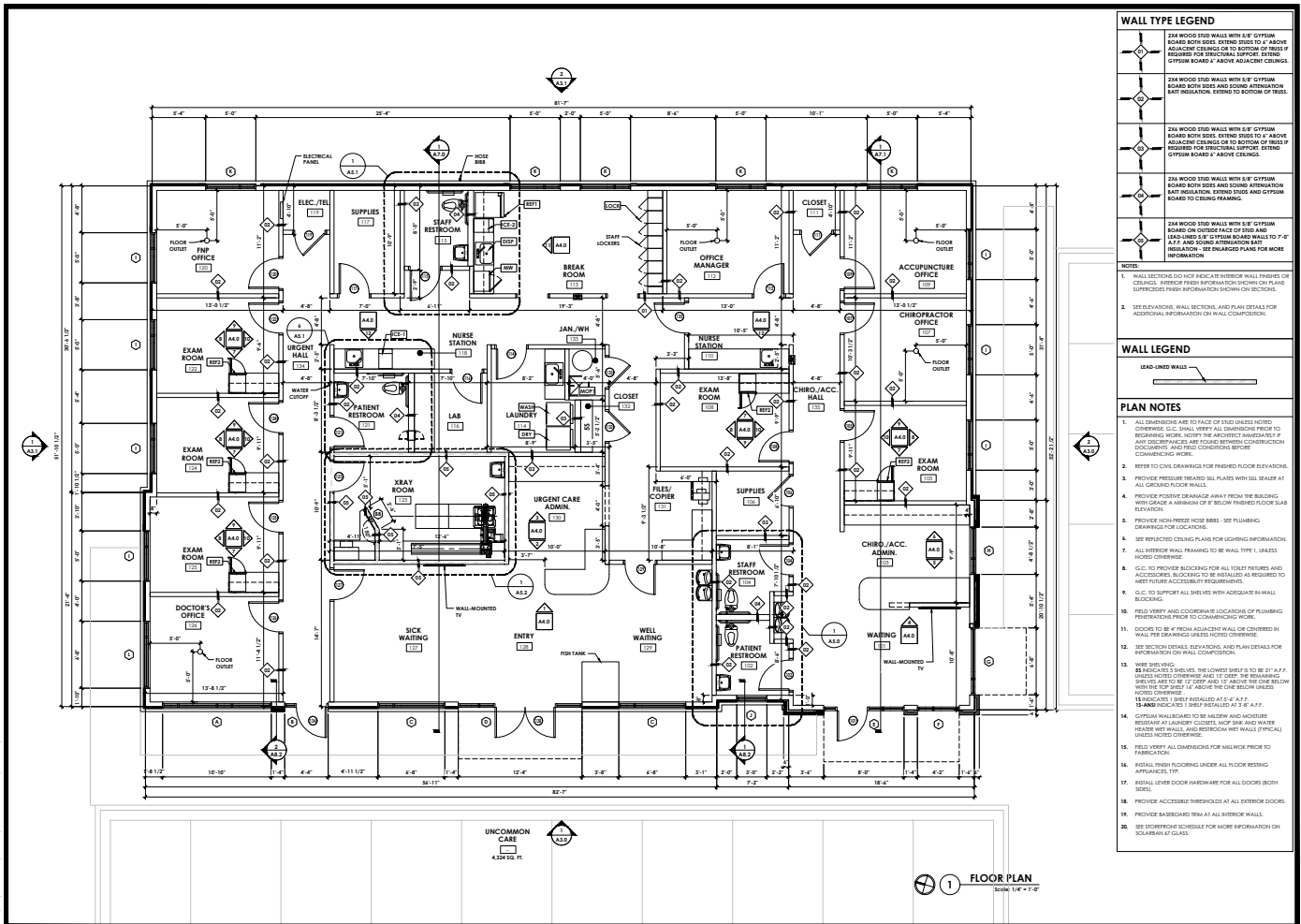
PROPERTY FEATURES

111 Logan Ct. | Angier, NC 27501

SQUARE FOOTAGE	1419 SF + SHARED BREAK ROOM
ASKING RATE	\$44 SF
TICAM	\$4.00
AVAILABLE	4TH QUARTER 2025
SIGNAGE	EXTERIOR BUILDING



FLOOR PLAN



Finley Design PA
7804 NC HWY 751
Suite 110
Durham, NC 27713
919-493-8200
FINLEYDESIGNARCH.COM

ISSUED FOR PERMIT

ANGIER MEDICAL COMPLEX
BUILDING 2
ANGIER, NC

REVISIONS

NO.	DATE	DESCRIPTION

FLOOR PLAN
A1.0

The information contained herein has been obtained from sources deemed reliable; however, Hartwell Realty, Inc. makes no guarantees, representations or warranties, as to the completeness or accuracy thereof. The presentation of this property is submitted subject to errors, omission and changes of price or conditions prior to sale or lease of the property. The property is subject to withdrawal without notice. It is the responsibility of the prospective Buyer(s), Tenant(s) or Investor(s) to verify the information contained herein.