

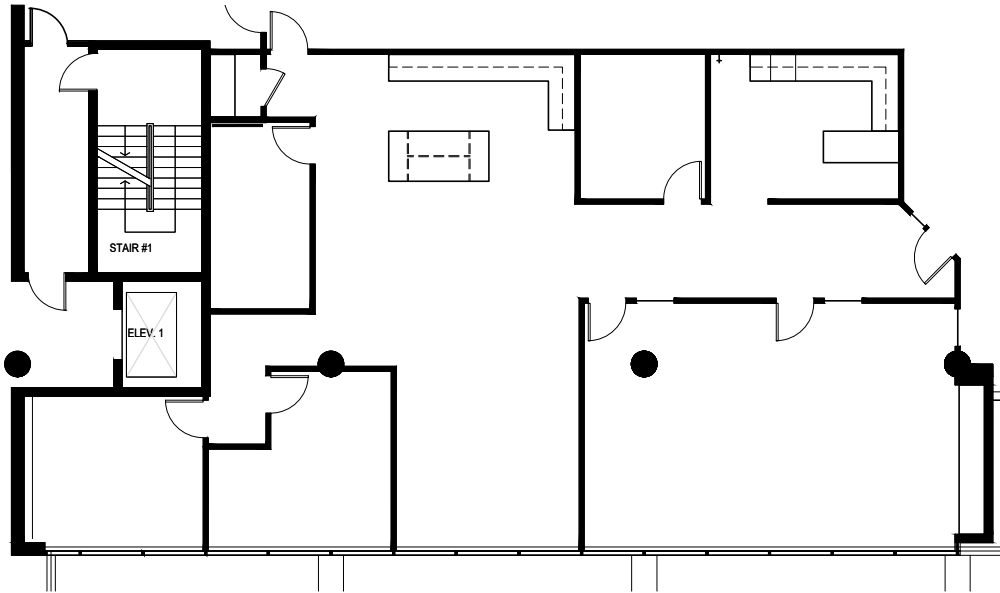
OFFICE SPACE FOR LEASE

455 SHERMAN STREET

DENVER, COLORADO 80203

SUITE 250
±2,965 RSF

AVAILABLE
Q4 2026



SUITE	SIZE	LAYOUT	AVAILABILITY
250	±2,965 RSF	4 offices, 1 conference room, reception area, kitchen & break area, open workstation area, access to restrooms, elevator and stairs	Available Q4 2026

JR BITZER

303 501 8778
jrbitzer@lee-associates.com