

METCALF
PLAZA



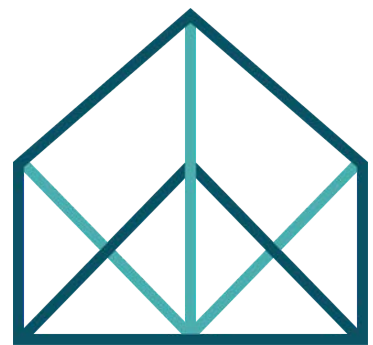
7171 W 95TH ST, OVERLAND PARK, KS 66212

OFFICE & RETAIL SPACE FOR LEASE



BRAIN GROUP



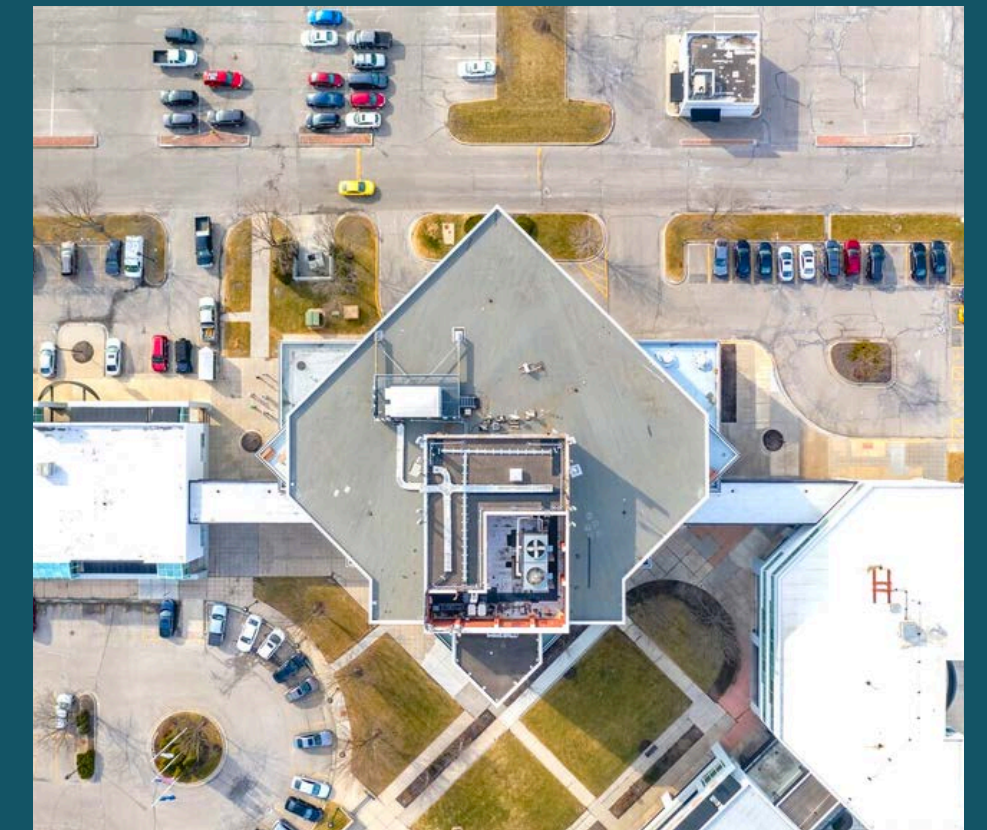


WELCOME TO METCALF PLAZA

Metcalfe Plaza is conveniently located on the corner of 95th Street and Metcalfe Avenue in Overland Park, Kansas. Metcalfe Plaza is currently offering several office and retail suites for lease. This iconic property features a variety of amenities and immediate access to a diverse selection of retail and restaurants in the 95th & Metcalfe Corridor.

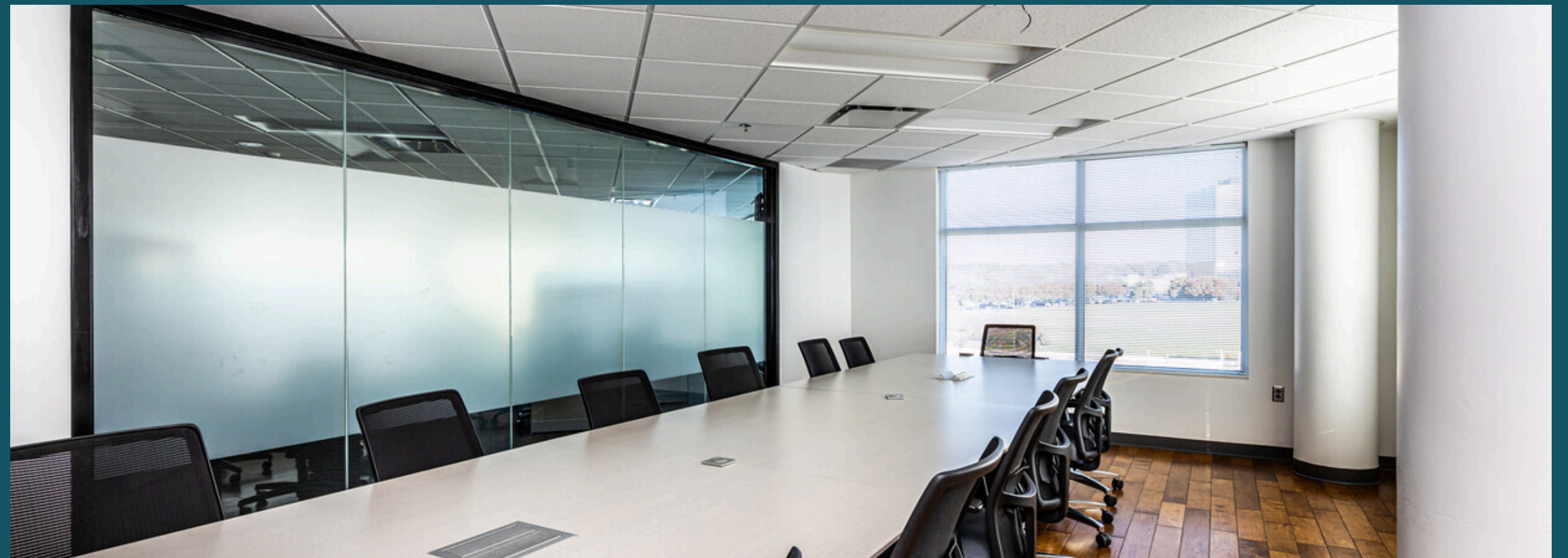


PROPERTY FEATURES



- 1,150 - 13,000+ SF available for lease
- First floor space with building signage - ideal for retail, office or showroom
- Building conference room accessible to all tenants
- 56,100 CPD through intersection of 95th St & Metcalf Ave
- Responsive, on-site property maintenance
- Immediate access to a variety of retail and restaurants: Jack Stack BBQ, Long Horn Steakhouse, Lowe's, Home Depot, Natural Grocers, Whataburger, Chick-Fil-A, Sickie's Garage, Topsy's, Andy's Frozen Custard, and others
- Google Fiber available

PROPERTY VISUALS

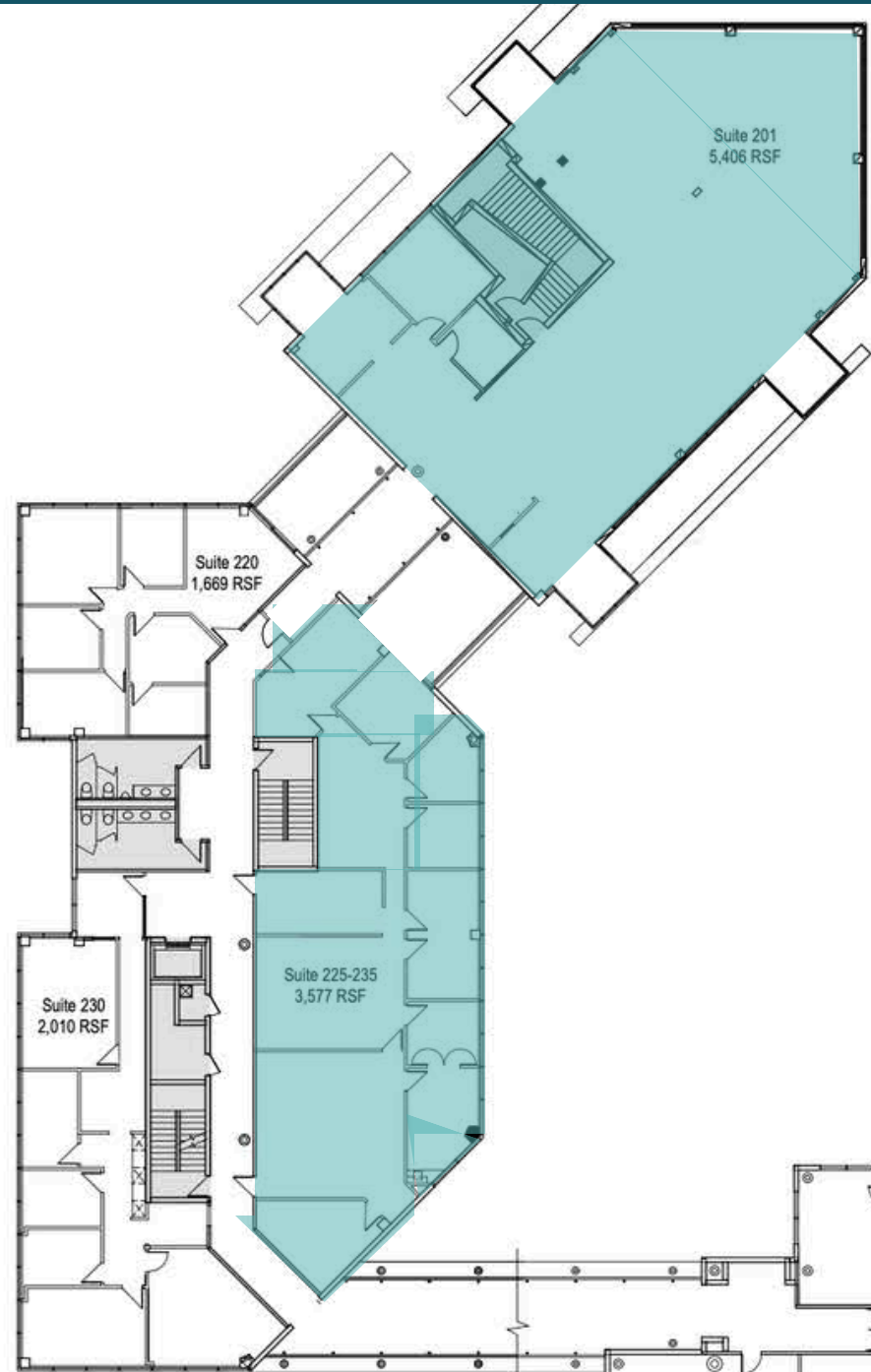




AVAILABLE SPACE

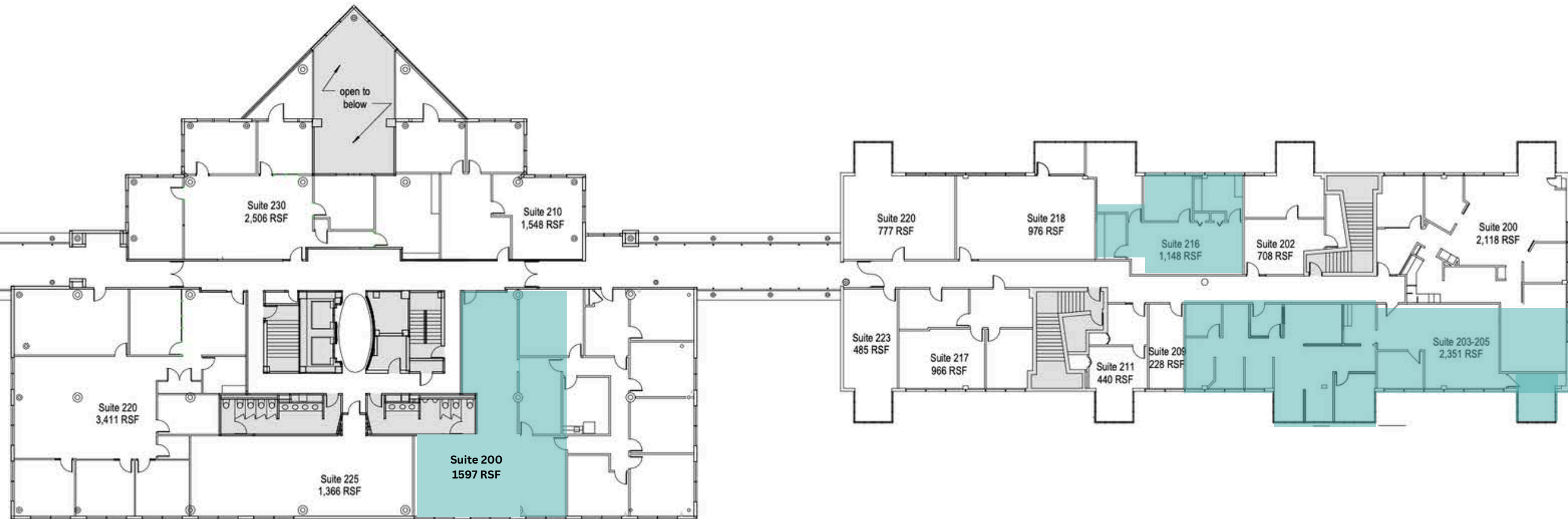
7171 W 95TH ST, OVERLAND PARK, KS 66212

AVAILABLE SPACE | FLOOR 2



- 💰 RATES: \$20/SF, FULL SERVICE RATE
- 🔧 TI: NEGOTIABLE
- 🅑 PARKING: 4.5 PER 1,000 SF
- 📄 LEASE TERM: NEGOTIABLE
- 🏢 BUSINESS PARK TYPE: OFFICE/RETAIL

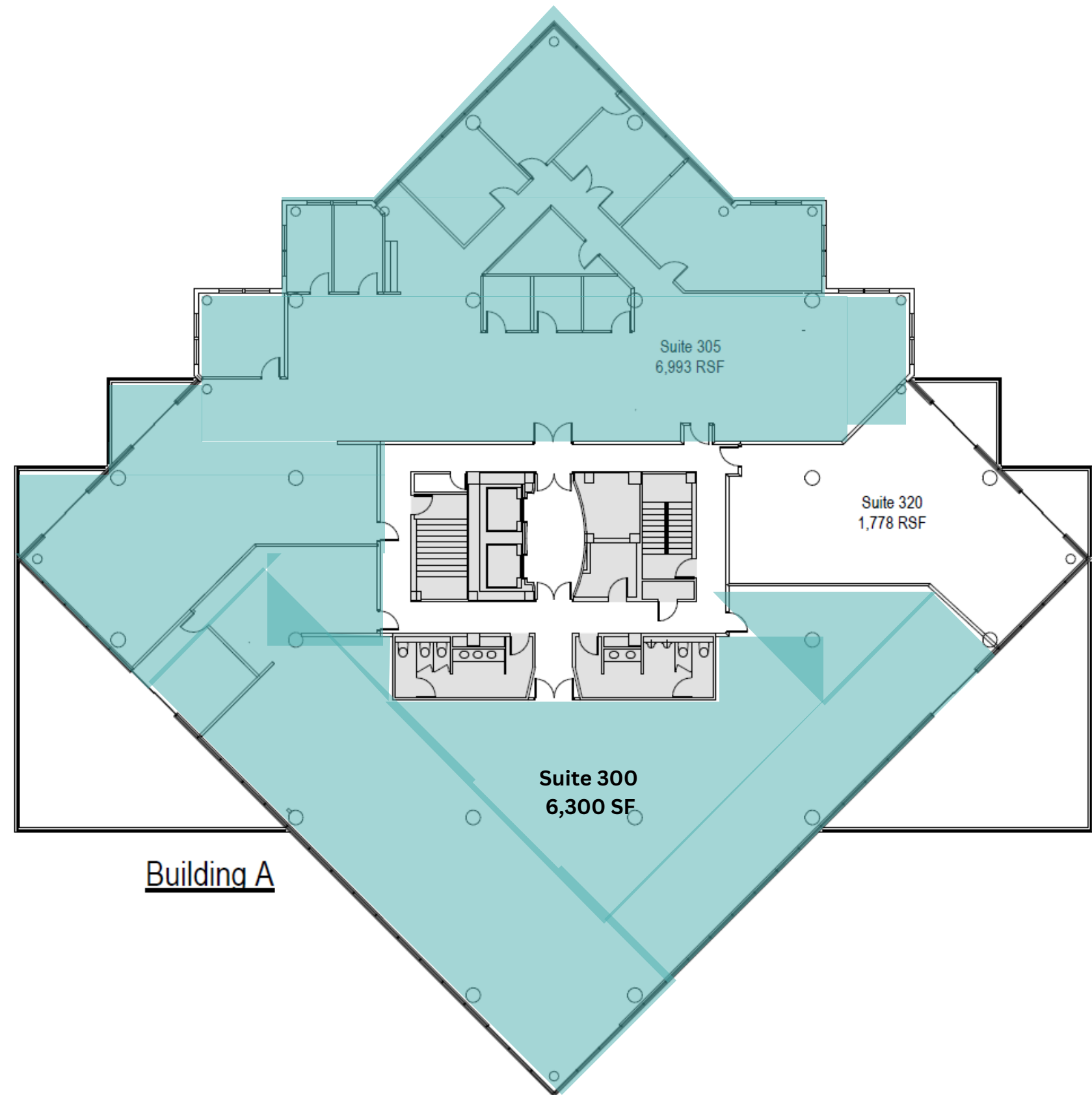
- SUITE 201: 5,406 RSF
- SUITE 225: 3,577 RSF
- SUITE 200: 1,587 RSF
- SUITE 216: 1,148 RSF
- SUITE 203: 2,351 RSF



AVAILABLE SPACE: FLOOR 3

- 💰 RATES: \$21 /SF, FULL SERVICE RATE
- 🔧 TI: NEGOTIABLE
- 🅑 PARKING: 4.5 PER 1,000 SF
- 📄 LEASE TERM: NEGOTIABLE
- 🏢 BUSINESS PARK TYPE: OFFICE/RETAIL

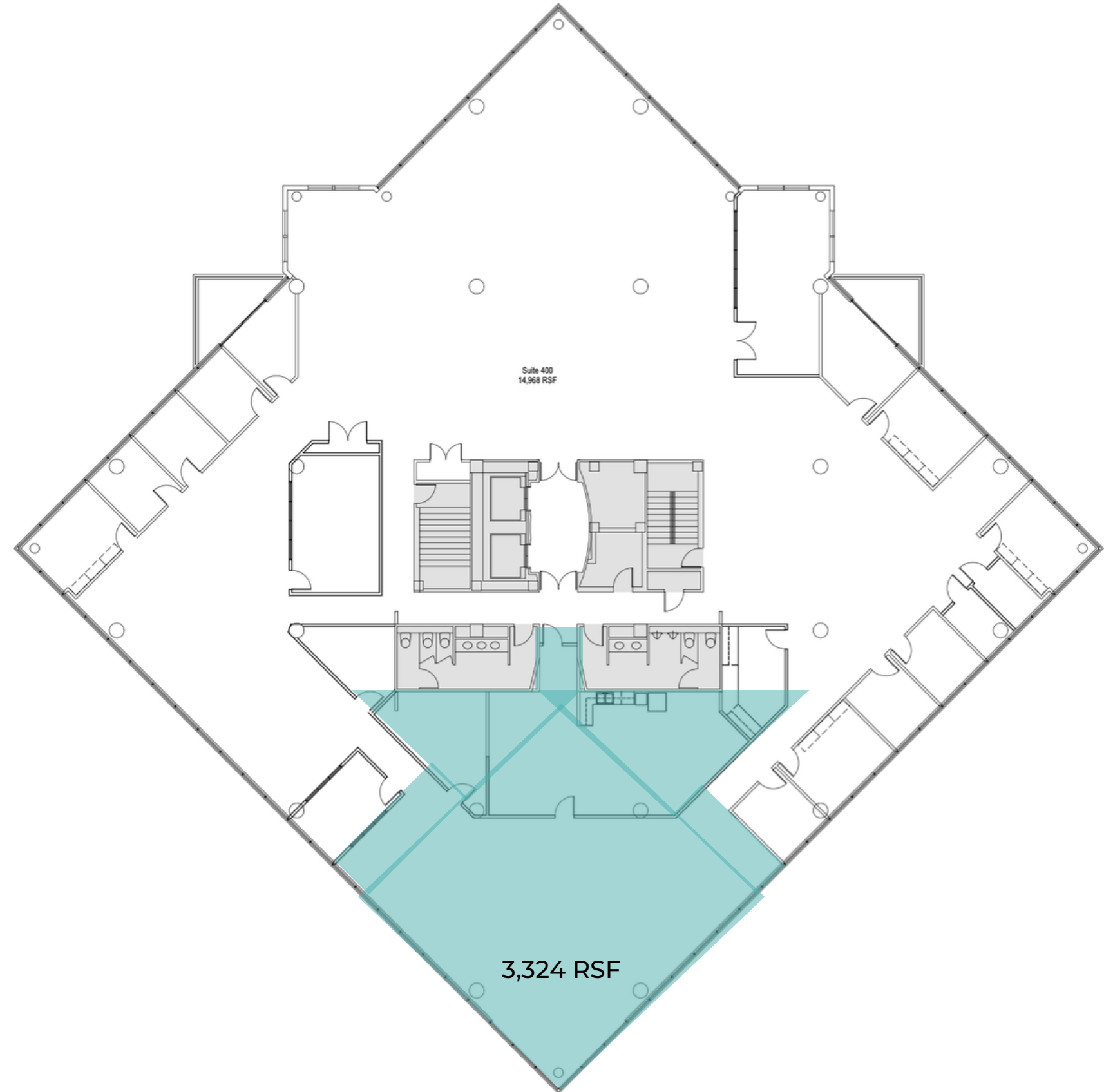
- SUITE 305: 6,993 SF
- SUITE 300: 6,300
- SUITES COULD BE COMBINED
FOR 13,293 RSF



AVAILABLE SPACE

SUITE 401

- 💰 RATES: \$20/SF, FULL SERVICE RATE
- 🔧 TI: NEGOTIABLE
- 🅑 PARKING: 4.5 PER 1,000 SF
- 📄 LEASE TERM: NEGOTIABLE
- 🏢 BUSINESS PARK TYPE: OFFICE/RETAIL



AVAILABLE SPACE

SUITE 500

- 💰 RATES: \$21/SF, FULL SERVICE RATE
- 🔧 TI: NEGOTIABLE
- 🅑 PARKING: 4.5 PER 1,000 SF
- 📄 LEASE TERM: NEGOTIABLE
- 🏢 BUSINESS PARK TYPE: OFFICE/RETAIL



95TH & METCALF TRADE AREA

Located in the heart of the 95th & Metcalf Retail/Office Corridor with a daytime population of 111,000+ within a 3-mile radius.



95TH STREET

NATURAL GROCERS
Vintage Stock
music, movies, video games, & more
TABLETOP **CHIEFS FIT**
Jersey Mike's **CINZETTI'S**
MICRO CENTER computers & electronics **FirstWatch** THE DAYTIME CAFE

SHAMROCK TRADING CORPORATION



THE HOME DEPOT
JACK STACK BARBECUE
Topsy's

Walmart Neighborhood Market

METCALF AVENUE

FIREHOUSE SUBS
pie five PIZZA CO.
AT&T
Summer Moon COFFEE

CHEVROLET

RED LOBSTER

Wendy's

ARVEST BANK

LONGHORN STEAKHOUSE

Chick-fil-c

Overland Park Racquet Club

91ST STREET

SHAMROCK TRADING CORPORATION

Shamrock Trading Office Development
Phase I: Completed

Olive Garden

LOWE'S

n|p novel place
senior living

95TH STREET

John Diemer Elementary School

CONTACT US

ANDREW BRAIN
(816) 281-5900
ABRAIN@BRAINGROUP.COM

KIMMY ANGIER
(816) 281-5900
KANGIER@BRAINGROUP.COM

300 E 39TH ST KCMO, 64111
WWW.BRAINGROUP.COM

