



614 CANTRILL DRIVE SUITES E & G

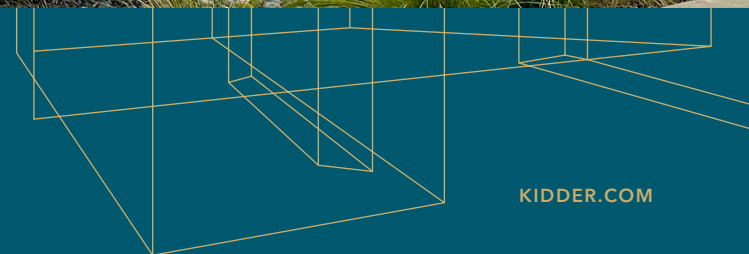
FOR LEASE | SUITE E: ±1,347 SF, SUITE G: ±1,329 SF | DAVIS, CA



**Kidder
Mathews**

JIM GRAY, LEED AP, CCIM
916.947.5142
jim.gray@kidder.com
LIC N° 00524597

NAHZ ANVARY, CCIM
916.284.8385
nahz.anvary@kidder.com
LIC N° 01468557



KIDDER.COM

FOR LEASE

614 Cantrill Drive, Suites E & G

FOR LEASE | SUITE E: ±1,347 SF & SUITE G: ±1,329 SF | DAVIS, CA



For Lease: \$1.60/SF, NNN

BUILDING FEATURES

SIZE Suite E: ±1,347 SF and Suite G: ±1,329 SF

NEW MODERN CONSTRUCTION including 17-foot ceiling height, clerestory windows, and roll-up doors

POWER Up to 100 amps of 3 phase, 4 wire power

ENERGY CONSERVATION AND SUSTAINABILITY including extra insulation, LED Lighting, water conserving landscape and site work, pre wired for electric car charger and much more.

LOCATION FEATURES

LOCATED near the Interstate 80 and Mace Boulevard exit

EASILY accessible from the freeway and to downtown Davis

JIM GRAY, LEED AP, CCIM

916.947.5142

jim.gray@kidder.com

LIC N° 00524597

NAHZ ANVARY, CCIM

916.284.8385

nahz.anvary@kidder.com

LIC N° 01468557

KIDDER.COM

This information supplied herein is from sources we deem reliable. It is provided without any representation, warranty, or guarantee, expressed or implied as to its accuracy. Prospective Buyer or Tenant should conduct an independent investigation and verification of all matters deemed to be material, including, but not limited to, statements of income and expenses. Consult your attorney, accountant, or other professional advisor.



FOR LEASE

614 Cantrill Drive, Suites E & G

FOR LEASE | SUITE E: ±1,347 SF & SUITE G: ±1,329 SF | DAVIS, CA



ENTRANCE AND ROLL-UP DOOR TO SUITE E



ENTRANCE AND ROLL-UP DOOR TO SUITE G



SINK INCLUDED



SAMPLE INTERIOR OF SUITE (PERSONAL PROPERTY TO BE REMOVED)



SECURED COMMON AREA RESTROOMS

KIDDER.COM

This information supplied herein is from sources we deem reliable. It is provided without any representation, warranty, or guarantee, expressed or implied as to its accuracy. Prospective Buyer or Tenant should conduct an independent investigation and verification of all matters deemed to be material, including, but not limited to, statements of income and expenses. Consult your attorney, accountant, or other professional advisor.

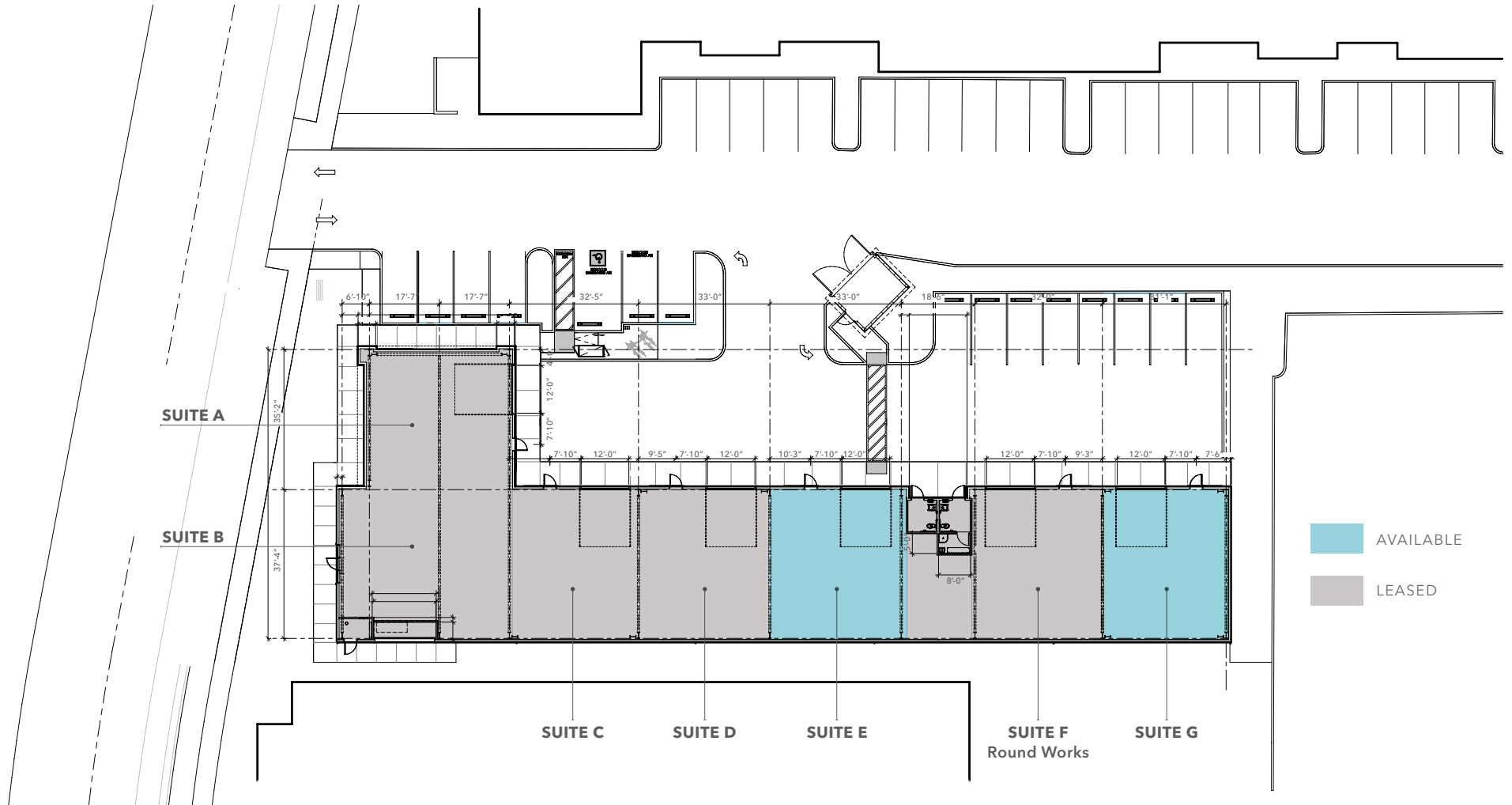
km Kidder Mathews

FOR LEASE

614 Cantrill Drive, Suites E & G

FOR LEASE | SUITE E: ±1,347 SF & SUITE G: ±1,329 SF | DAVIS, CA

Site and Floor Plan



KIDDER.COM

This information supplied herein is from sources we deem reliable. It is provided without any representation, warranty, or guarantee, expressed or implied as to its accuracy. Prospective Buyer or Tenant should conduct an independent investigation and verification of all matters deemed to be material, including, but not limited to, statements of income and expenses. Consult your attorney, accountant, or other professional advisor.

km Kidder Mathews

FOR LEASE

614 Cantrill Drive, Suites E & G

FOR LEASE | SUITE E: ±1,347 SF & SUITE G: ±1,329 SF | DAVIS, CA

Location



NEIGHBORING USES

- 1 ±100,000 SF multi-tenant office
- 2 ±100,000 SF multi-tenant office
- 3 Technip FMC single user
- 4 3 office/R&D buildings
- 5 UC Davis Physics lab
- 6 Construction and engineering offices
- 7 Multi-tenant retail - food and amenities
- 8 Small offices (law firm, dentist)
- 9 Day care / Preschool
- 10 Small light industrial / flex space (606 AND 630 PENA)
University of California Agriculture and Natural Resources single user office
- 11 Large industrial / flex space
- 12 UC Davis Lighting & Technology Center
- 13 Winery
- 14 Live/work units
- 15 Cafe/Bakery
- 16 Carlton Senior Living
- 17 Davis Police Department
- 18 Small light industrial / flex space
- 19 Apartment Building

KIDDER.COM

This information supplied herein is from sources we deem reliable. It is provided without any representation, warranty, or guarantee, expressed or implied as to its accuracy. Prospective Buyer or Tenant should conduct an independent investigation and verification of all matters deemed to be material, including, but not limited to, statements of income and expenses. Consult your attorney, accountant, or other professional advisor.

km Kidder
Mathews

FOR LEASE

614 Cantrill Drive, Suites E & G

FOR LEASE | SUITE E: ±1,347 SF & SUITE G: ±1,329 SF | DAVIS, CA

Location



KIDDER.COM

This information supplied herein is from sources we deem reliable. It is provided without any representation, warranty, or guarantee, expressed or implied as to its accuracy. Prospective Buyer or Tenant should conduct an independent investigation and verification of all matters deemed to be material, including, but not limited to, statements of income and expenses. Consult your attorney, accountant, or other professional advisor.

km Kidder Mathews