

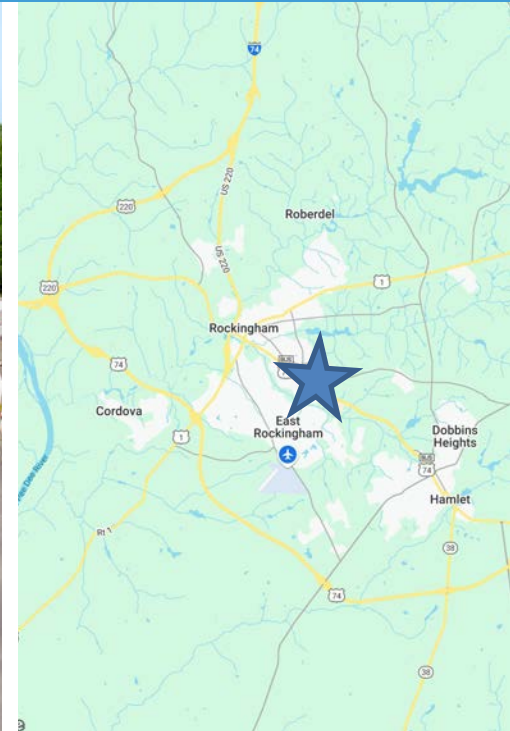
RICHMOND PLAZA

1305 E. BROAD AVENUE, ROCKINGHAM, NC 28379

FOR LEASE

NS New South
Properties
NEWSOUTHPROP.COM

± 1,458 - 6,400 SF RETAIL & OFFICE SPACE AVAILABLE (MOVE IN READY)



PROPERTY HIGHLIGHTS

- ± 1,458 - 6,400 SF retail & office space available
- ± 202,444 square foot power center at the heart of Rockingham and Richmond County's primary retail corridor
- First class national co-tenancy including Belk, Ross Dress for Less, Bealls, Planet Fitness, & Kay Jewelers
- Fully renovated facade
- Highest Traffic shopping center in the region (22,000 VPD)
- 2.5M SF of retail within one-mile; including Lowe's Home Improvement, Walmart, Food Lion, Tractor Supply & Harbor Freight Tools



CALL BROKER FOR PRICING

BROKER CONTACT

JOHN CALHOUN

704.927.2883

jcalhoun@newsouthprop.com



"The information contained herein was obtained from sources believed reliable, however, no guarantees, warranties, or representations have been made as to the completeness or accuracy thereof. No liability assumed for error or omissions."

RICHMOND PLAZA

1305 E. BROAD AVENUE, ROCKINGHAM, NC 28379

SITE PLAN

± 1,458 - 6,400 SF RETAIL & OFFICE SPACE AVAILABLE (MOVE IN READY)

RICHMOND PLAZA		
SUITE	TENANT	SF
1227	Ruest Realty Company, LLC	2,860
1231	Regional Finance Corp.	1,750
1501A	Dunkin' Donuts	1,950
1501B	Kay Jewelers	2,004
1505	USMC	1,308
1	Fuji Restaurant	2,200
2	AVAILABLE	2,250
3	Steele Uniforms	2,140
5	Planet Fitness	14,370
7	AVAILABLE	1,800
8	Belk	45,074
9	AVAILABLE	1,458
10	Ross	18,284
10A	Rainbow	7,500
11	Shoe Show	4,920
12	Bath & Body Works	3,960
13A	Hibbett Sports	7,500
13B	Bealls	25,311
14	Headlines	2,940
23	South Gate	1,800
24	Roses Express	20,409
25	AVAILABLE	6,400
26	Pee Dee Outfitters	3,960
27	Tropical Smoothie	2,060
28	DKD Nails	2,500
29	Merle Norman	1,800
30-31	AVAILABLE	4,610
32	Black's Auto Service	8,186
37	Little Caesars	1,200
TOTAL:		202,504



"The information contained herein was obtained from sources believed reliable, however, no guarantees, warranties, or representations have been made as to the completeness or accuracy thereof. No liability assumed for error or omissions."



RICHMOND PLAZA

1305 E. BROAD AVENUE, ROCKINGHAM, NC 28379

SUITE 25
PHOTOS

NS New South
Properties
NEWSOUTHPROP.COM

SUITE 25: ± 6,400 SF RETAIL SPACE (MOVE IN READY)

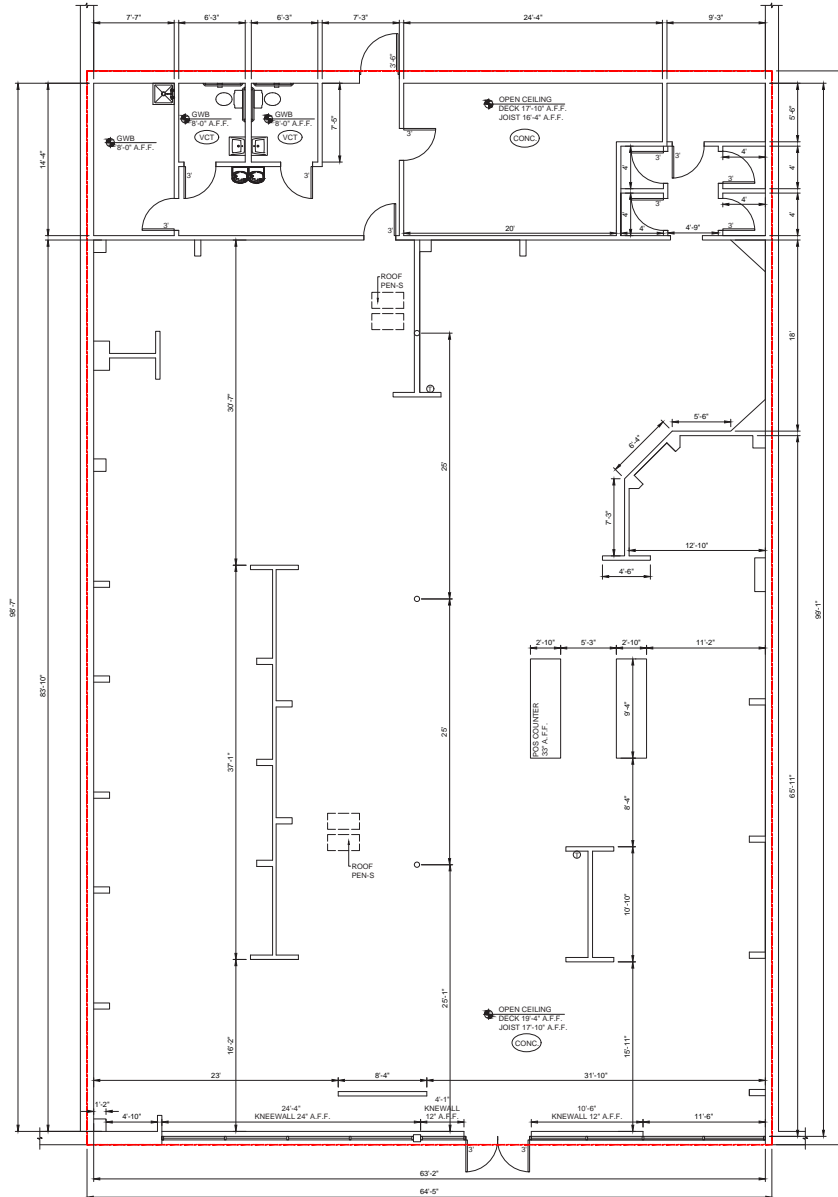


"The information contained herein was obtained from sources believed reliable, however, no guarantees, warranties, or representations have been made as to the completeness or accuracy thereof. No liability assumed for error or omissions."



JOHN CALHOUN | 704.927.2883 | jcalhoun@newsouthprop.com

SUITE 25: ± 6,400 SF RETAIL SPACE (MOVE IN READY)



"The information contained herein was obtained from sources believed reliable, however, no guarantees, warranties, or representations have been made as to the completeness or accuracy thereof. No liability assumed for error or omissions."



RICHMOND PLAZA

1305 E. BROAD AVENUE, ROCKINGHAM, NC 28379

SUITE 30-31
PHOTOS

NS New South
Properties
NEWSOUTHPROP.COM

SUITE 30-31: ± 4,610 SF OFFICE OR RETAIL SPACE (MOVE IN READY)



"The information contained herein was obtained from sources believed reliable, however, no guarantees, warranties, or representations have been made as to the completeness or accuracy thereof. No liability assumed for error or omissions."



JOHN CALHOUN | 704.927.2883 | jcalhoun@newsouthprop.com

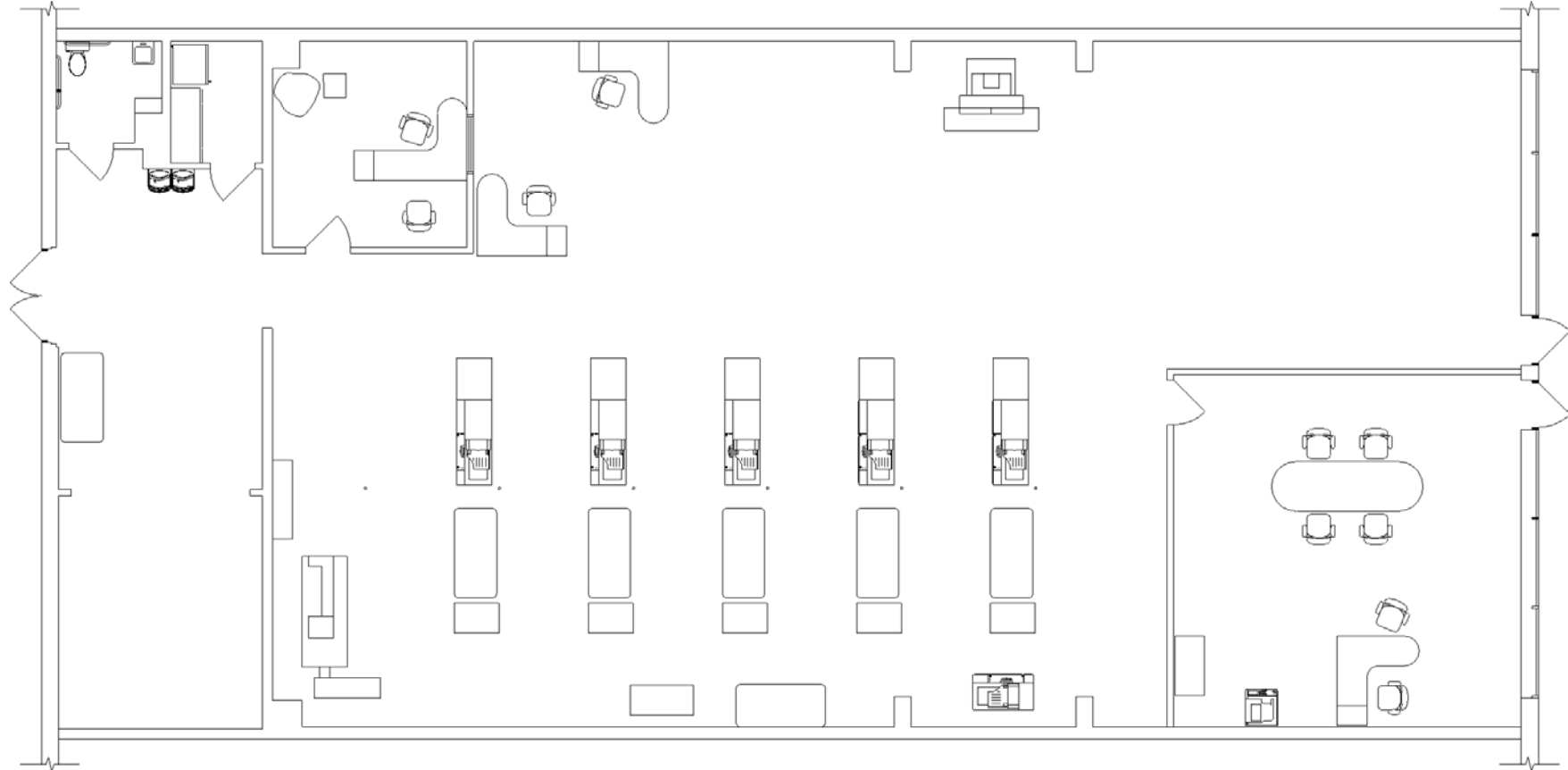
RICHMOND PLAZA

1305 E. BROAD AVENUE, ROCKINGHAM, NC 28379

SUITE 30-31
FLOOR PLAN

NS New South
Properties
NEWSOUTHPROP.COM

SUITE 30-31: ± 4,610 SF OFFICE OR RETAIL SPACE (MOVE IN READY)



"The information contained herein was obtained from sources believed reliable, however, no guarantees, warranties, or representations have been made as to the completeness or accuracy thereof. No liability assumed for error or omissions."



JOHN CALHOUN | 704.927.2883 | jcalhoun@newsouthprop.com

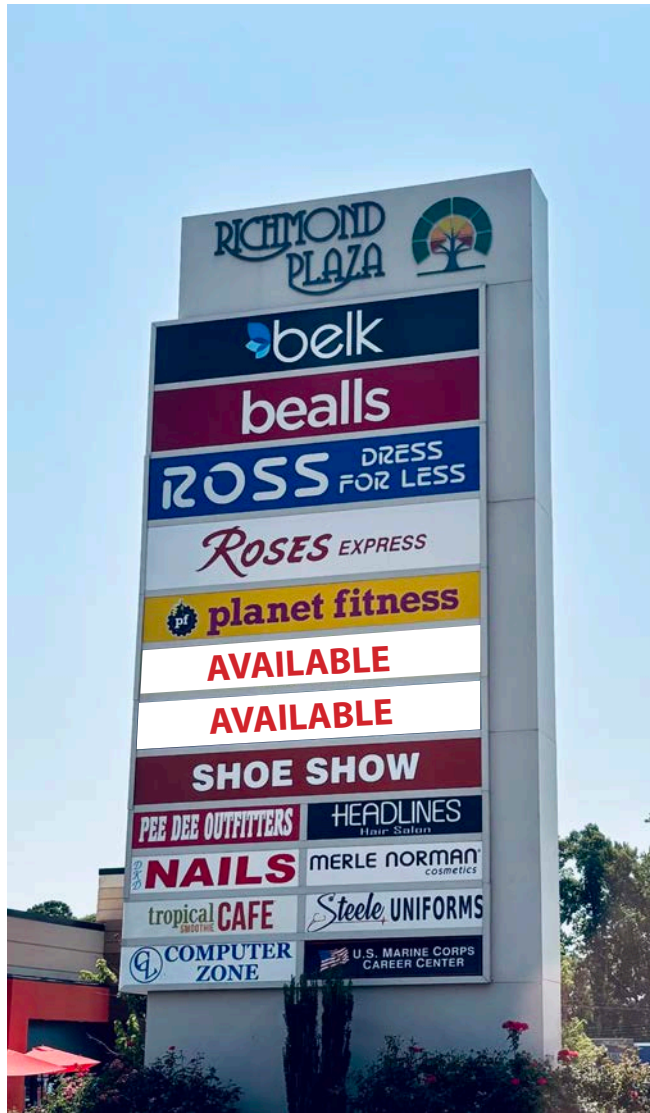
RICHMOND PLAZA

1305 E. BROAD AVENUE, ROCKINGHAM, NC 28379

SITE PHOTOS

NS New South Properties
NEWSOUTHPROP.COM

± 1,458 - 6,400 SF RETAIL & OFFICE SPACE AVAILABLE (MOVE IN READY)



"The information contained herein was obtained from sources believed reliable, however, no guarantees, warranties, or representations have been made as to the completeness or accuracy thereof. No liability assumed for error or omissions."



JOHN CALHOUN | 704.927.2883 | jcalhoun@newsouthprop.com

RICHMOND PLAZA

1305 E. BROAD AVENUE, ROCKINGHAM, NC 28379

CORRIDOR
AERIAL

NS New South
Properties
NEWSOUTHPROP.COM

± 1,458 - 6,400 SF RETAIL & OFFICE SPACE AVAILABLE (MOVE IN READY)



"The information contained herein was obtained from sources believed reliable, however, no guarantees, warranties, or representations have been made as to the completeness or accuracy thereof. No liability assumed for error or omissions."



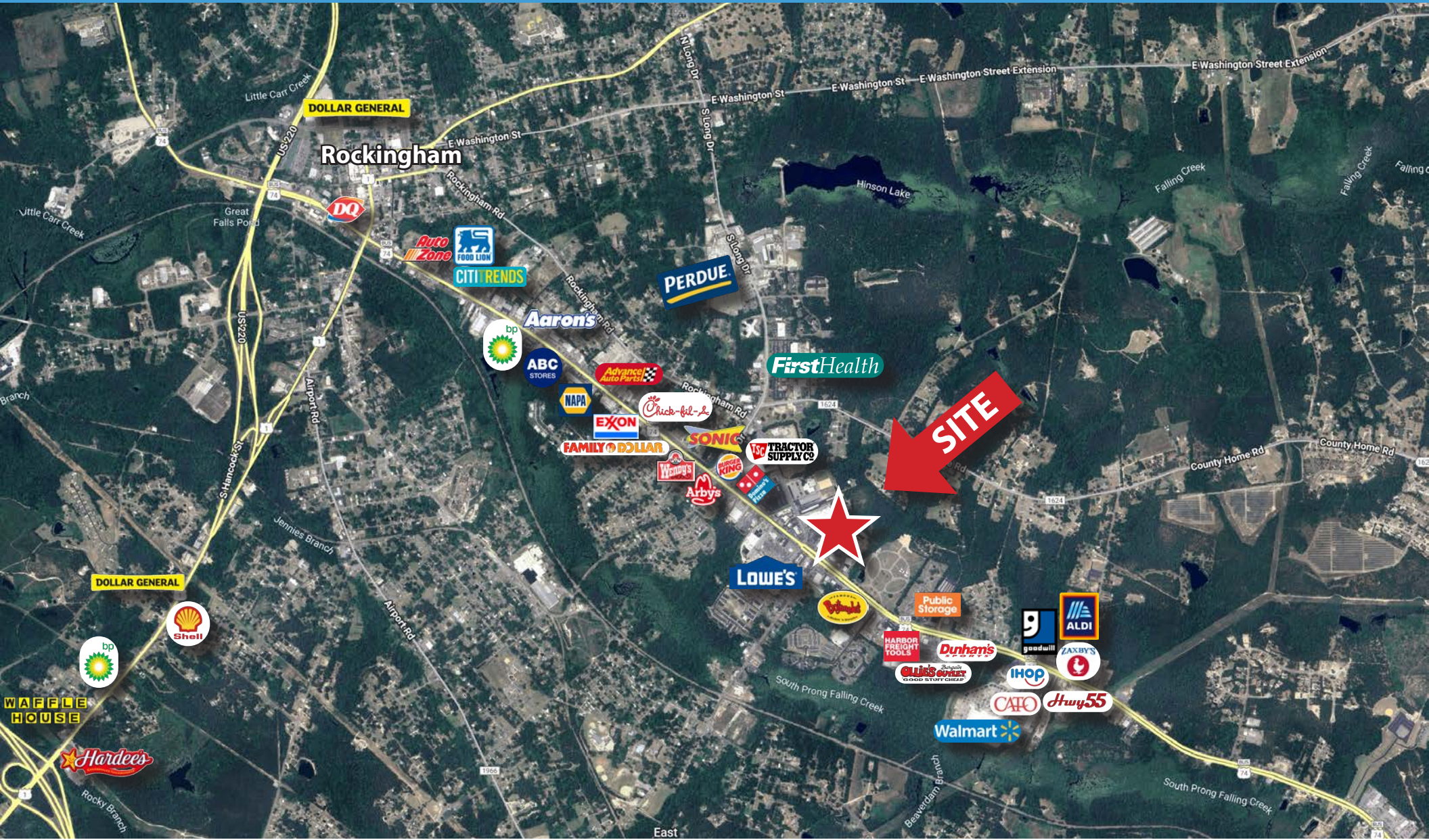
JOHN CALHOUN | 704.927.2883 | jcalhoun@newsouthprop.com

RICHMOND PLAZA

1305 E. BROAD AVENUE, ROCKINGHAM, NC 28379

**MARKET
AERIAL**

± 1,458 - 6,400 SF RETAIL & OFFICE SPACE AVAILABLE (MOVE IN READY)

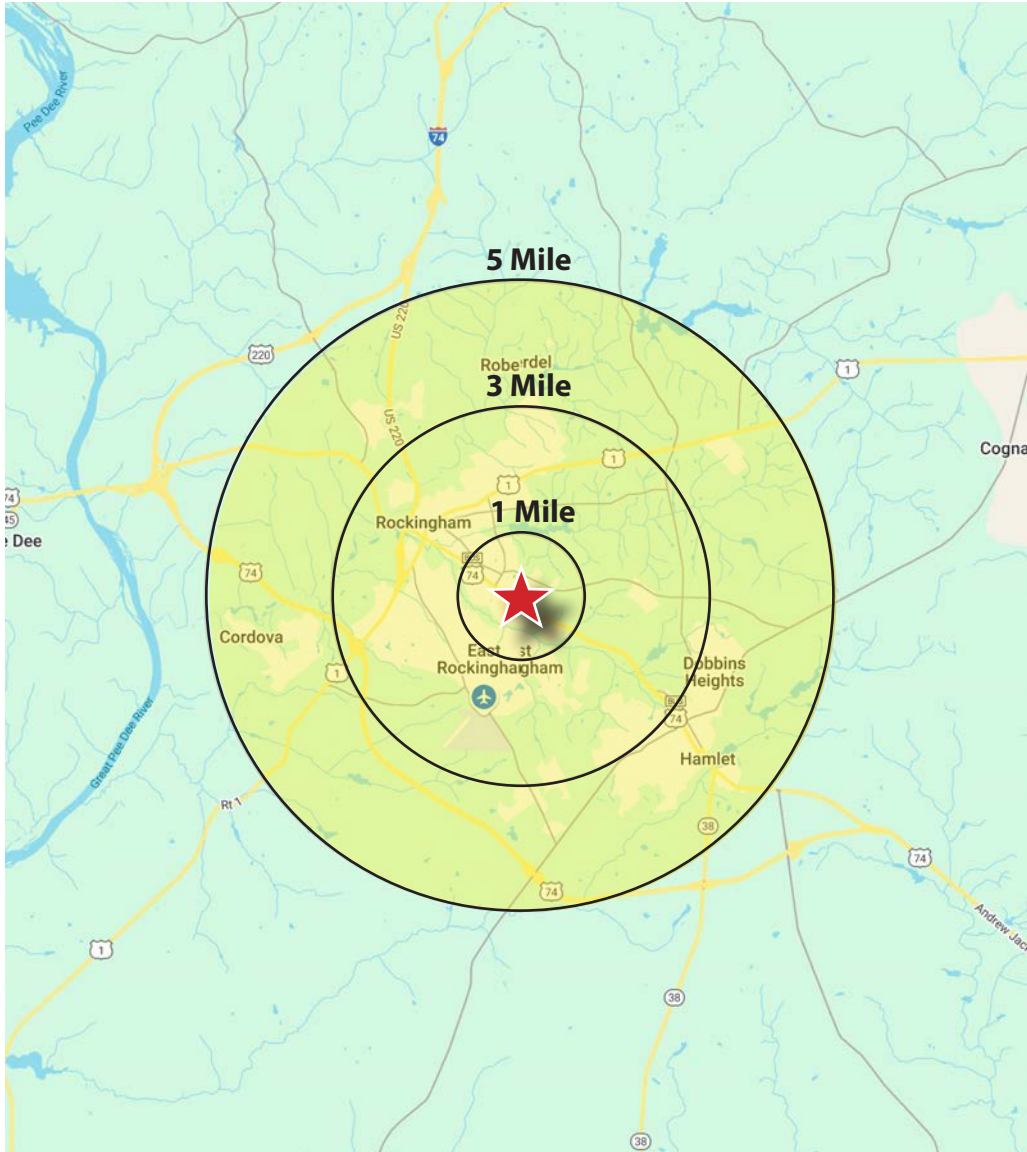


"The information contained herein was obtained from sources believed reliable, however, no guarantees, warranties, or representations have been made as to the completeness or accuracy thereof. No liability assumed for error or omissions."



JOHN CALHOUN | 704.927.2883 | jcalhoun@newsouthprop.com

± 1,458 - 6,400 SF RETAIL & OFFICE SPACE AVAILABLE (MOVE IN READY)



POPULATION	1 MILE	3 MILE	5 MILE
2025 Estimated Population	2,813	17,323	30,086
2030 Projected Population	2,743	16,910	29,473
Projected Annual Growth (2025-2030)	-70 -0.5%	-413 -0.5%	-613 -0.4%
HOUSEHOLDS			
2025 Estimated Households	1,234	7,134	12,308
2030 Projected Households	1,185	6,890	11,952
HOUSEHOLD INCOME			
2025 Estimated Average Household Income	\$45,165	\$59,544	\$60,708
BUSINESSES			
2025 Estimated Total Businesses	246	775	1,174
2025 Estimated Total Employees	3,208	8,074	11,472

"The information contained herein was obtained from sources believed reliable, however, no guarantees, warranties, or representations have been made as to the completeness or accuracy thereof. No liability assumed for error or omissions."

