



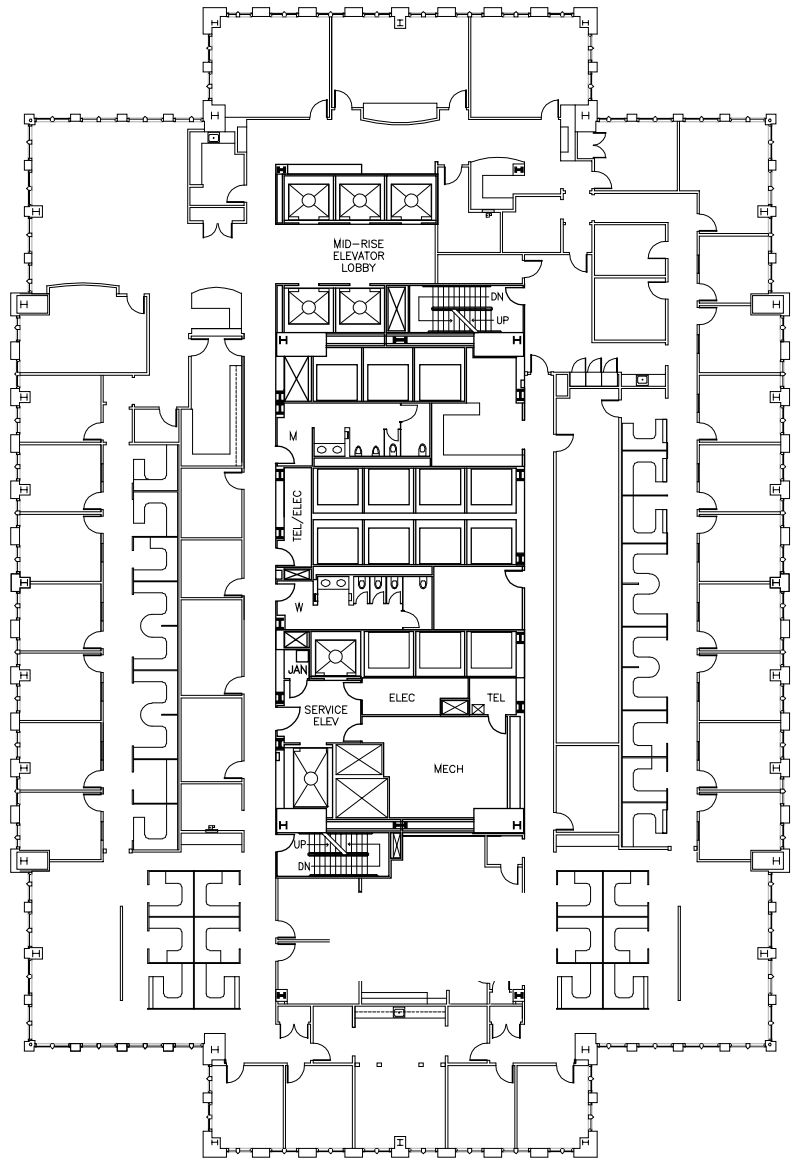
KEY TOWER

127 PUBLIC SQUARE, CLEVELAND, OH

SUITE 2200 22,623 SF

FEATURING:

- Elevator exposure
- 24 large windowed offices, 7 interior offices, conference rooms, built in cubes, reception area
- 360 Degree views



Exclusive Broker: JLL, Inc.

KRISTY (HULL) PETERS
Senior Vice President
(440) 226-1550
kristy.hull@jll.com

HEATHER GILLELAND
Vice President
(330) 316-4164
heather.gilleland@jll.com



Although information has been obtained from sources deemed reliable, neither Owner nor JLL makes any guarantees, warranties or representations, express or implied, as to the completeness or accuracy as to the information contained herein. Any projections, opinions, assumptions or estimates used are for example only. There may be differences between projected and actual results, and those differences may be material. The Property may be withdrawn without notice. Neither Owner nor JLL accepts any liability for any loss or damage suffered by any party resulting from reliance on this information. If the recipient of this information has signed a confidentiality agreement regarding this matter, this information is subject to the terms of that agreement.