



SPENCER/HINES
P R O P E R T I E S

LAND

S. Church Street Extension
Roebuck, SC



- 1.12+/- acres on S. Church Street Extension.
 - Located beside Roebuck Post Office
 - 195'+/- road frontage
 - Spartanburg County Tax Map # 6-29-12-030.01
 - 5 miles to downtown Spartanburg
 - Easy access to I-26 – approximately 3 miles.
- SALE PRICE:**
\$250,000

CONTACT | Andy Hayes 864-706-0189
ahayes@spencerhines.com POWERBROKER

WWW.SPENCERHINES.COM

COMMERCIAL REAL ESTATE SALES, LEASING, & INVESTMENTS
215 N. Pine Street, 1st floor , Spartanburg, SC - 864.583.1001

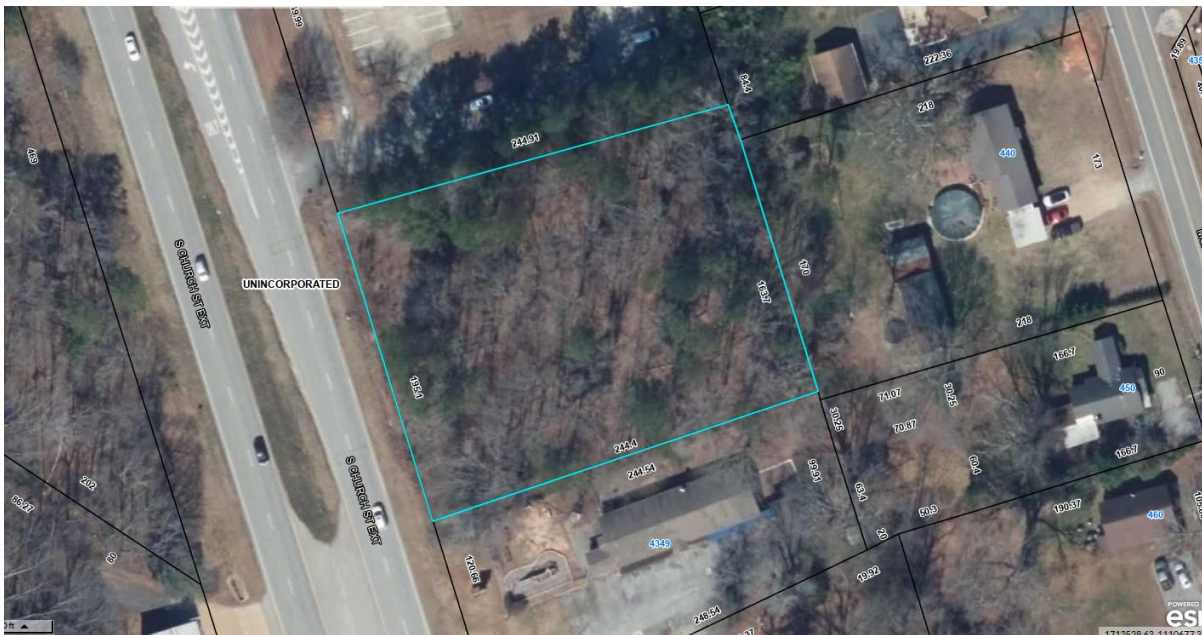
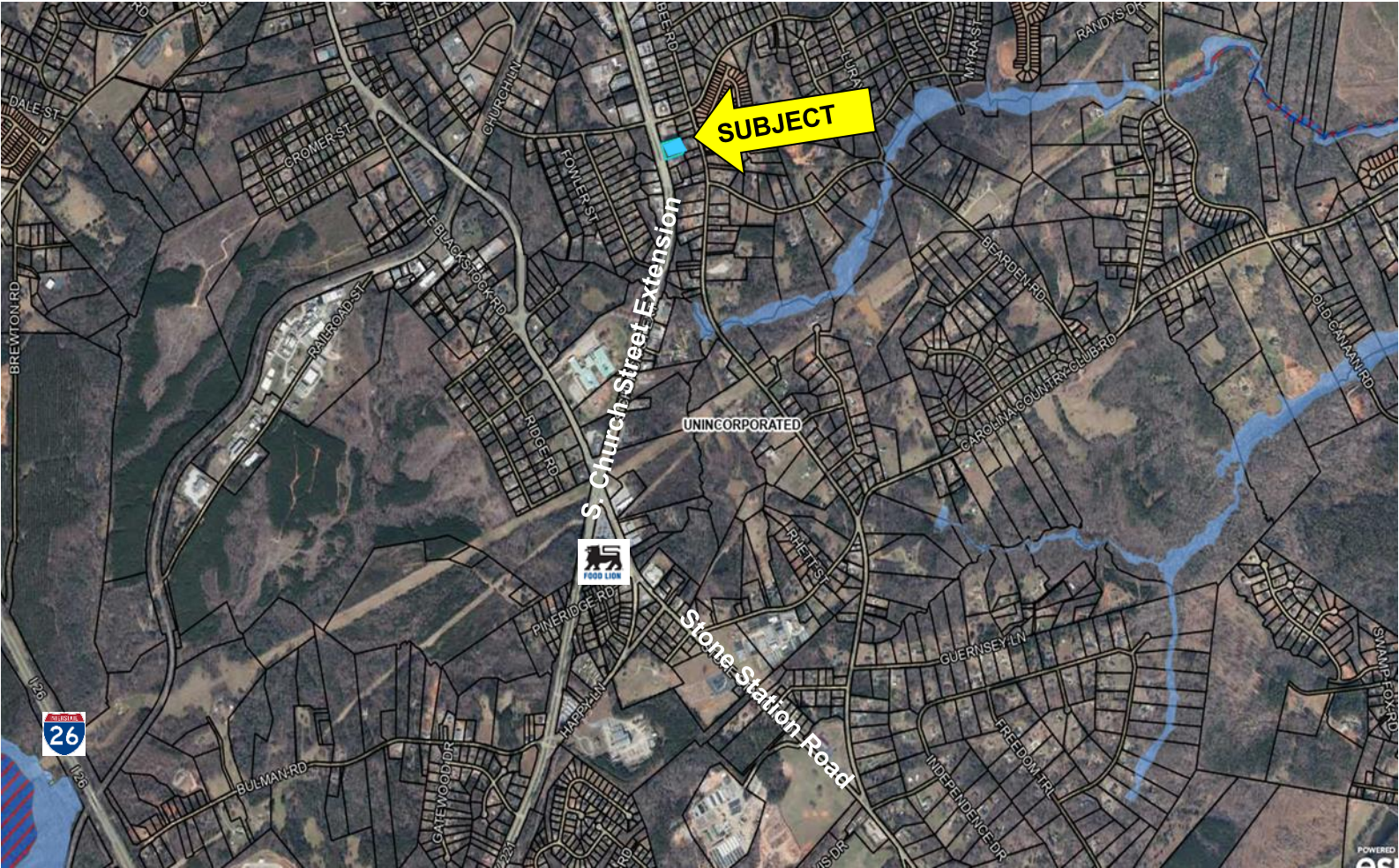
No warranty or representation, expressed or implied, is made to the accuracy of the information contained herein, and the same is submitted subject to errors, omissions, change of price, rental or other conditions, imposed by the principles.



SPENCER/HINES
P R O P E R T I E S

LAND

S. Church Street Extension
Roebuck, SC



WWW.SPENCERHINES.COM

No warranty or representation, expressed or implied, is made to the accuracy of the information contained herein, and the same is submitted subject to errors, omissions, change of price, rental or other conditions, imposed by the principles.



SPENCER/HINES
P R O P E R T I E S

LAND

S. Church Street Extension
Roebuck, SC



WWW.SPENCERHINES.COM

No warranty or representation, expressed or implied, is made to the accuracy of the information contained herein, and the same is submitted subject to errors, omissions, change of price, rental or other conditions, imposed by the principles.



SPENCER/HINES

PROPERTIES

LAND

S. Church Street Extension
Roebuck, SC

