

# San Raphael Medical Plaza

## 899 N. Wilmot Road, Tucson, AZ



### Space Available for Lease

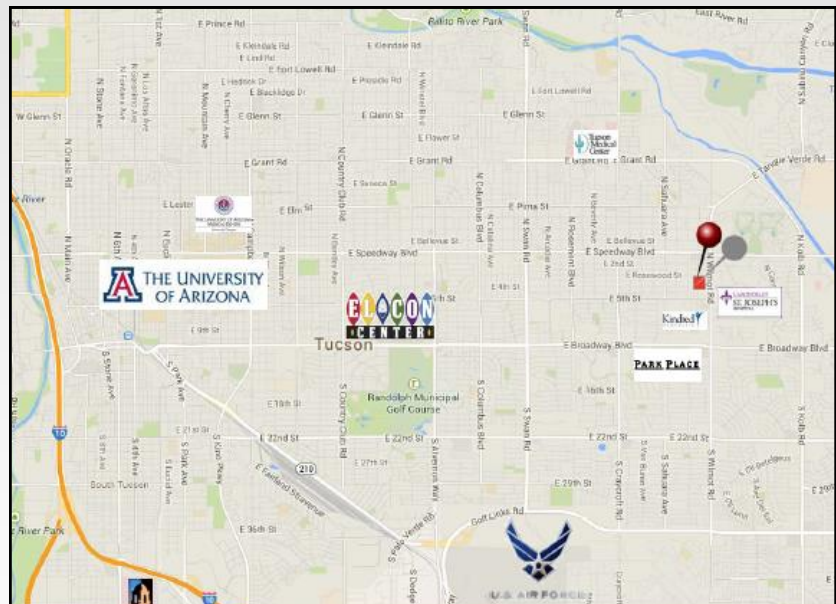
- **Availability:** Suite A-3:  $\pm$  1,557 SF  
Suite \*\*D-3:  $\pm$  1,982 SF  
Suite \*\*D-5:  $\pm$  1,229 SF  
(The above quoted square footage has no load factor added and is purely \*usable square footage)  
(\*\*Suites D-3 and D-5 have recently been upgraded and improved)
- **Lease Rate:** \$23.00/USF
- **Lease Type:** Full Service (excluding janitorial)
- **Zoned:** O-3

### Highlights:

- 1/2 mile from Carondelet St. Joseph's Hospital and close proximity to Tucson Medical Center.
- Quality, well established medical and professional offices.
- Attractive landscaping.
- Plentiful parking.
- Traffic count on Wilmot Rd is 40,249\* vehicles per day.

\*CoStar 2023

### Location Map



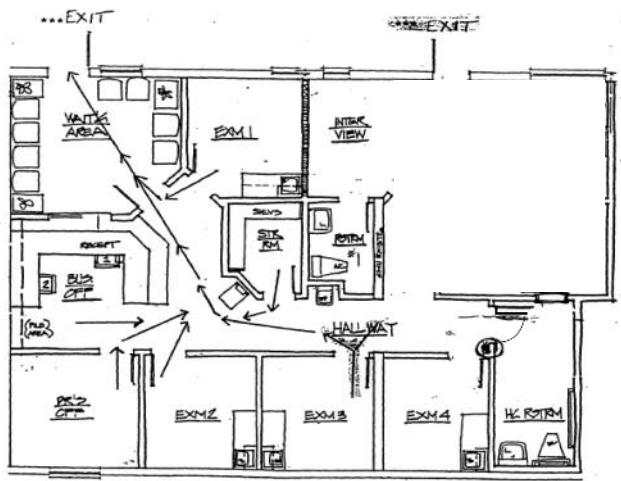
Exclusively Represented by:

Lori Casey  
Doug Marsh  
Cameron Casey

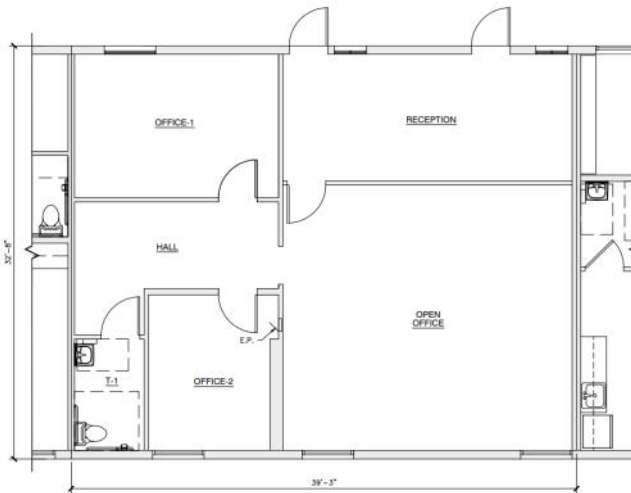
**Oxford**  
REALTY ADVISORS

6262 N. Swan Road, Suite 175  
Tucson, AZ 85718  
Phone (520) 232-0200  
Fax (520) 232-0300  
www.oxfordrealtyadvisors.com

# Floor Plans



**A-3 FLOOR PLAN - 1,557 RSF**



**D-5 FLOOR PLAN - 1,229 RSF**



**D-3 FLOOR PLAN - 1,982 RSF**

# Site Plan



*Exclusively Represented by:*

**Lori Casey  
Doug Marsh  
Cameron Casey**



**6262 N. Swan Road, Suite 175  
Tucson, AZ 85718  
Phone (520) 232-0200  
Fax (520) 232-0300  
www.oxfordrealtadv.com**

The information contained herein has been given to us by the owner of the property or obtained from sources we deem reliable. While we do not doubt its accuracy, we have not verified it and make no guarantee, warranty or representation about it. It is your responsibility to independently confirm its accuracy and completeness. You and your advisors should conduct a careful, independent investigation of the property to determine to your satisfaction the suitability of the property for your needs.