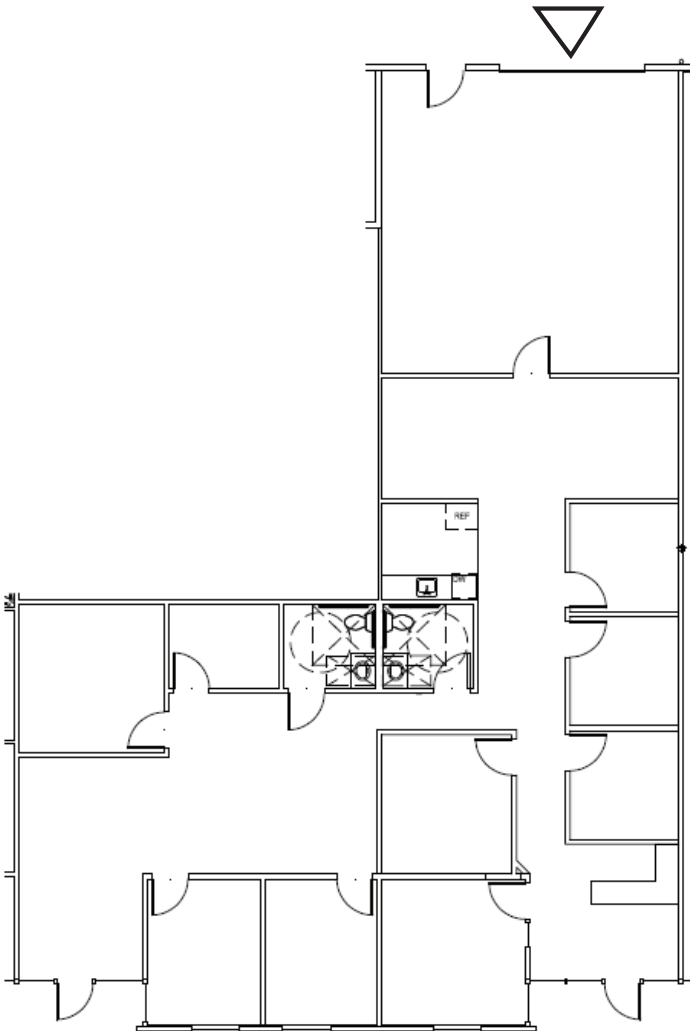


**3,067 SF INDUSTRIAL SPACE AVAILABLE
BUILDING 19, SUITE 1930/1940**

12117 NE 99TH STREET, SUITE 1930/1940, VANCOUVER, WA 98682

1930
30'-0" x 35'-0"
~1067 SF

1940
25'-0" x 80'-0"
~2000 SF



◁ = Grade Door

**SUITE 1930/1940
HIGHLIGHTS & FEATURES**

- 2,452 SF Office Space
- 615 SF Warehouse Space
- Multiple Private Offices
- 1 Grade Door
- 14' Clear Height
- 120/208 Volt, 3-Phase Power
- Sprinklered Building
- Zoned for Light Industrial Use
- Ample Parking
- On-Site Property Management
- Restaurants and Retail Amenities nearby: Los Jalapenos, Columbia Credit Union, Papa John's Pizza, Chevron & Many More

paddencp.com

Available: July 2026



NOW AVAILABLE! BUILDING 19, SUITE 1930/1940

12117 NE 99th Street, Suite 1930/1940, Vancouver, WA 98682



LEASING CONTACT

Coleman Brown, CCIM
Columbia Commercial, LLC
Coleman@CCPprop.com
360.952.4758

paddencp.com

