

Park 10 Business Center

16802 Barker Springs Rd., Suite 651, Houston, TX

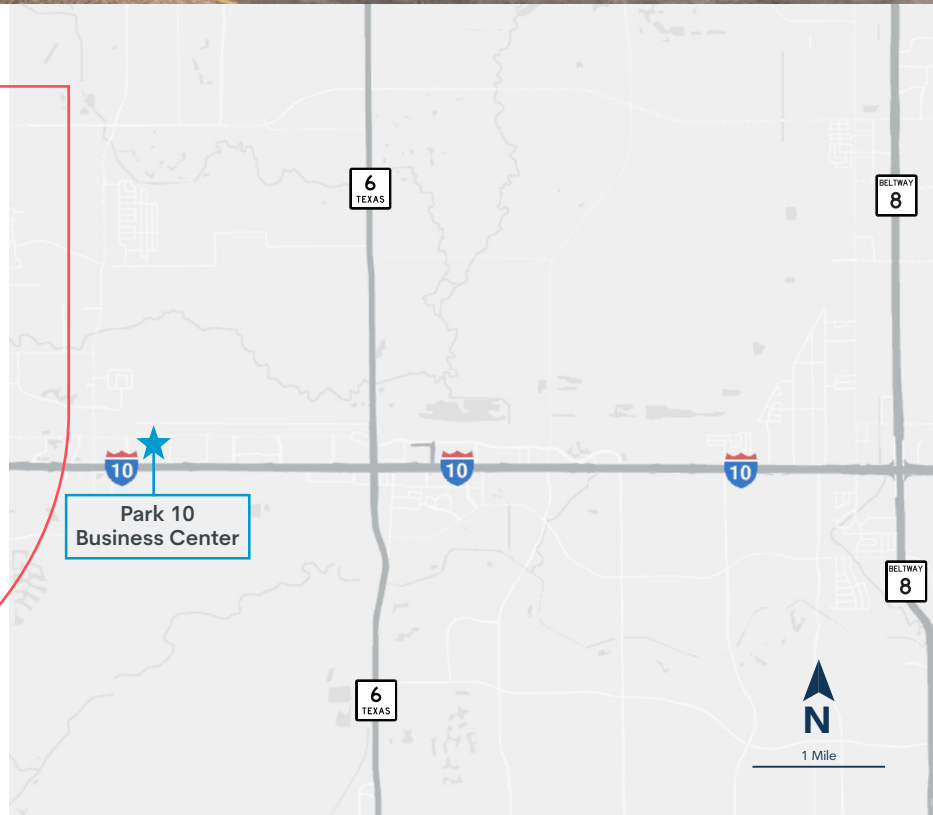
Brookfield
Properties

9,840 SF
Industrial Space
for Lease



Facility Highlights

- Total building: 19,821 SF
- Available SF: 9,840 SF
 - Warehouse: 9,164 SF
 - Office: 646 SF
- Clear height: 22'
- Front-load configuration
- (1) dock-high door
- (1) drive-in ramp



Leasing Contacts

Garret Geaccone
713.300.0232
garret.geaccone@streamrealty.com

Meg Zschappel
713.300.0284
meg.zschappel@streamrealty.com

Natalie Gilbert
713.332.3413
natalie.gilbert@streamrealty.com

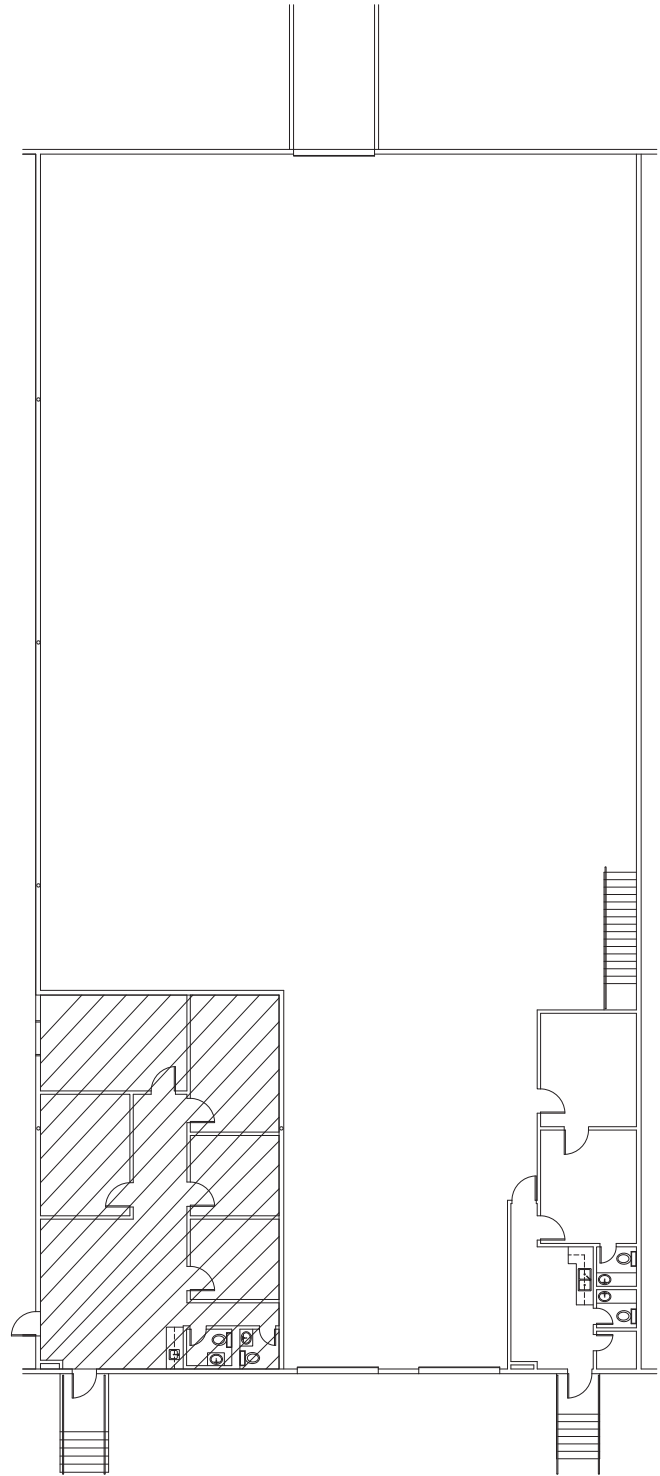
Brookfield
Properties

STREAM

Park 10 Business Center

16802 Barker Springs Rd., Suite 651, Houston, TX

Brookfield
Properties



Leasing Contacts

Garret Geaccone
713.300.0232
garret.geaccone@streamrealty.com

Meg Zschappel
713.300.0284
meg.zschappel@streamrealty.com

Natalie Gilbert
713.332.3413
natalie.gilbert@streamrealty.com

Brookfield
Properties

STREAM®