

FOR LEASE | 104 ½ and 106 West 39th Street, Kansas City, MO



- ✓ 2 separate 625 SF +/- spaces available. Can be combined for a total of 1,250 SF +/-
- ✓ Kansas City Streetcar stop within walking distance
- ✓ Perfect location for retail or professional use, with ample parking, rare in midtown
- ✓ Call for pricing

2025 Demographics	1 mile	3 miles	5 miles
Population	24,031	115,718	276,476
# Households	14,179	57,033	124,902
Avg HH Income	\$91,029	\$101,252	\$96,662

Joel Hutchings

joel@fishmancommercial.com
913.747.3324 O | 913.488.7201 C

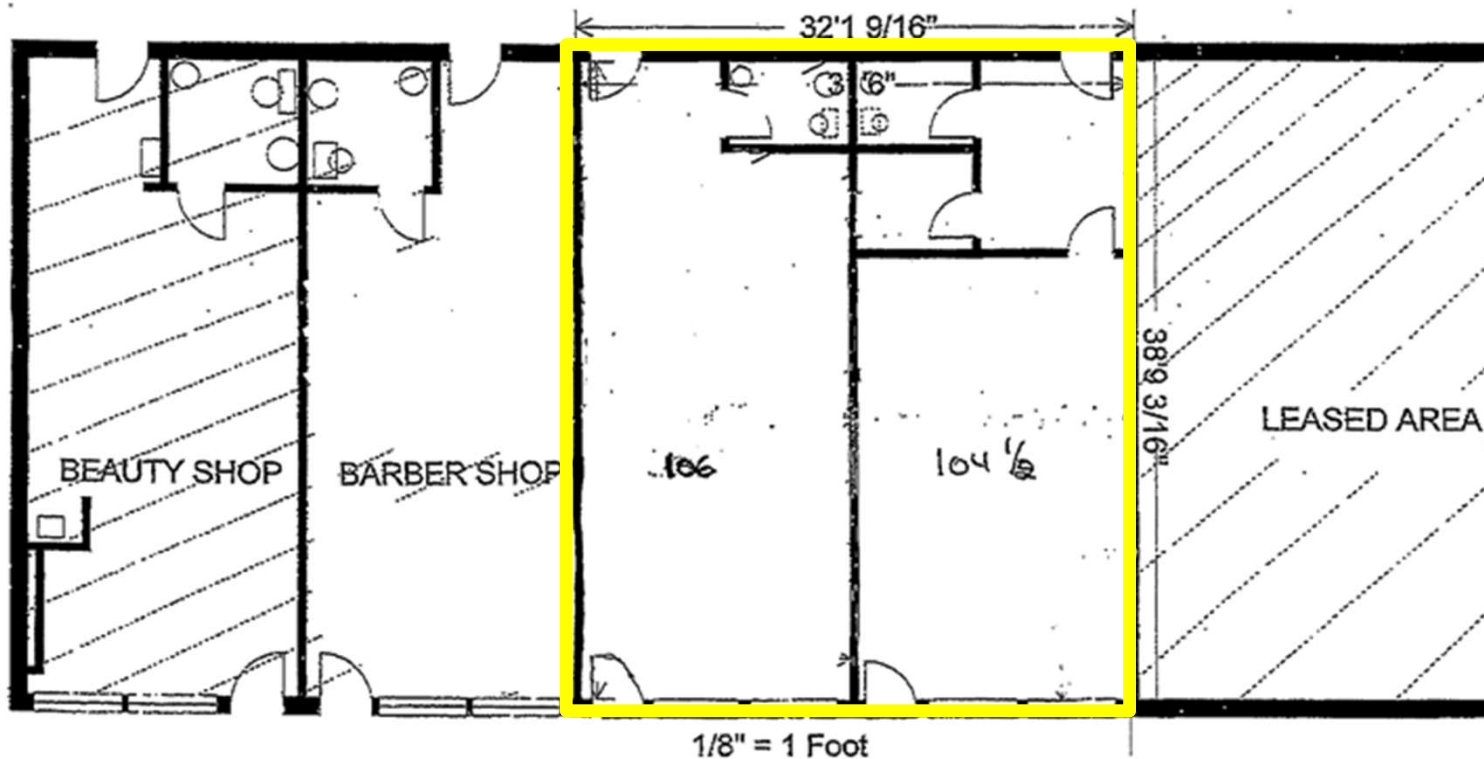
Kayla Hutchings

kayla@fishmancommercial.com
913.747.3325 O | 913.850.9810 C



FOR LEASE | 104 ½ and 106 West 39th Street, Kansas City, MO

FLOOR PLAN OF AVAILABLE SPACE



Joel Hutchings

joel@fishmancommercial.com

913.747.3324 O | 913.488.7201 C

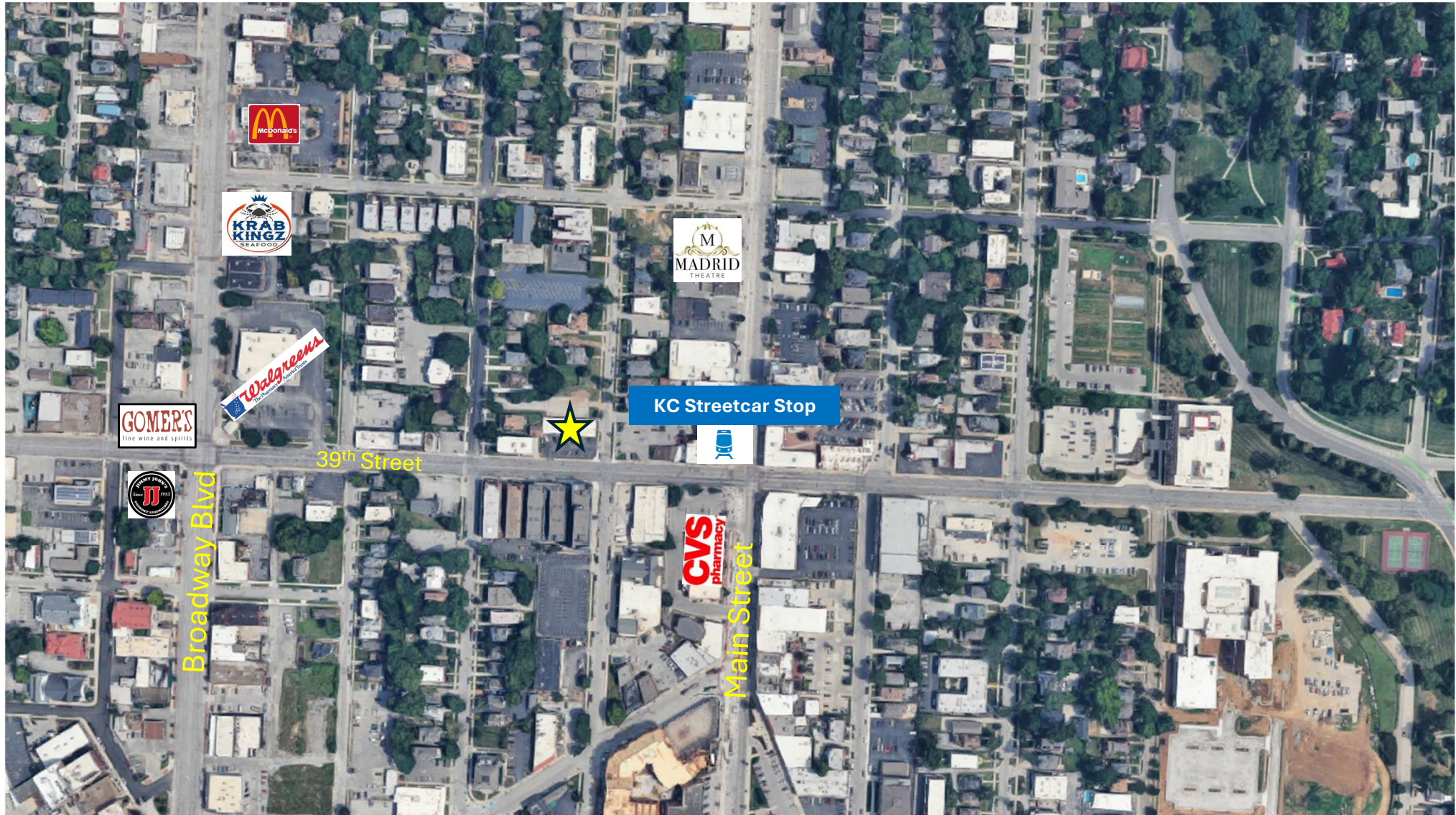
Kayla Hutchings

kayla@fishmancommercial.com

913.747.3325 O | 913.850.9810 C

FISHMAN
COMMERCIAL REAL ESTATE

FOR LEASE | 104 ½ and 106 West 39th Street, Kansas City, MO



Joel Hutchings

joel@fishmancommercial.com

913.747.3324 O | 913.488.7201 C

Kayla Hutchings

kayla@fishmancommercial.com

913.747.3325 O | 913.850.9810 C

