

# Tri-Temp Distribution/Production Facility

730 N Great SW Pkwy  
Arlington, TX

18,323 SF on  $\pm$  1.03 acres  
for Sale or Lease!



## Contact Us:

Kevin Griffiths  
Kevin.griffiths@jll.com  
610.955.7502

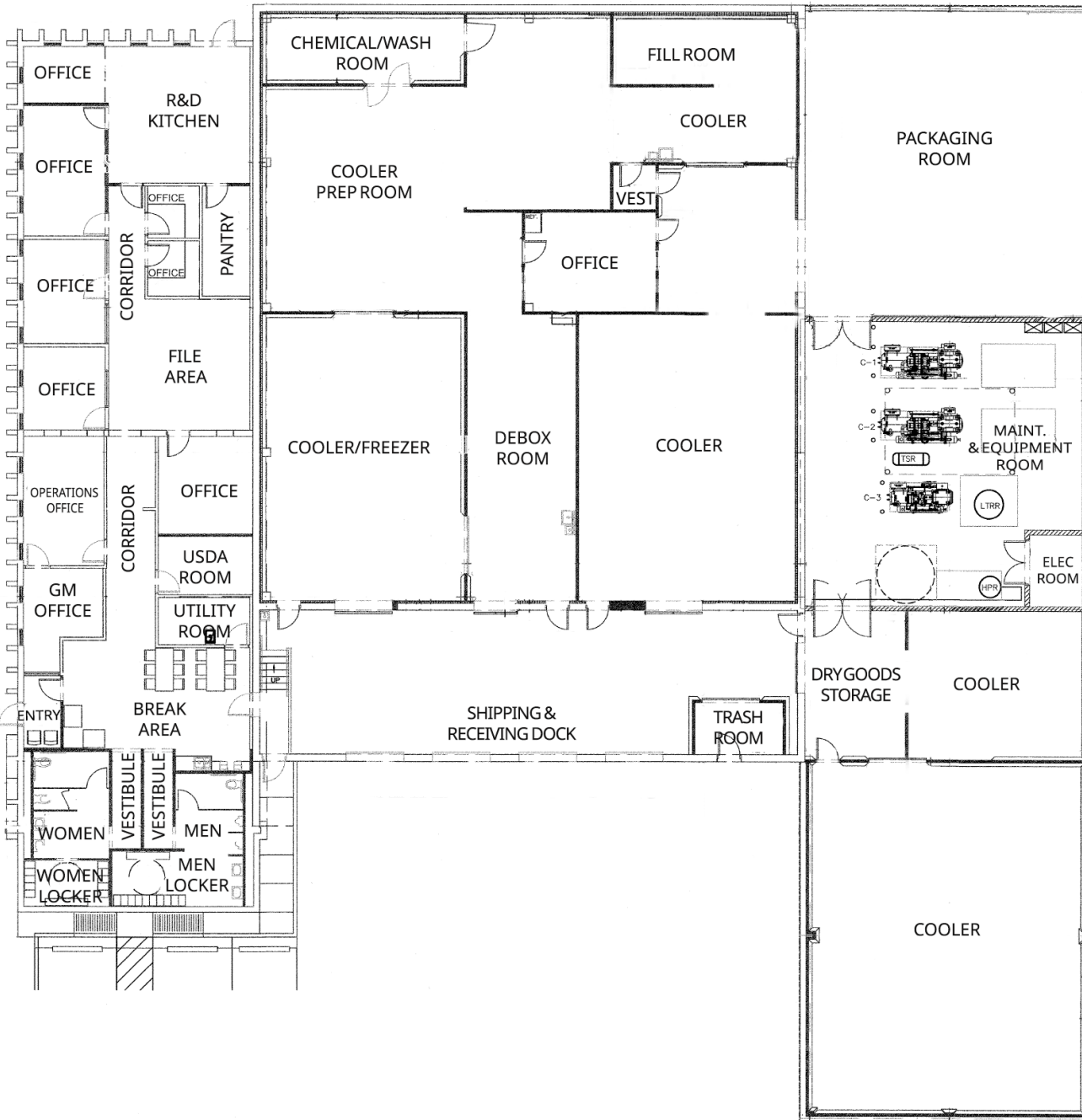
Turner Wisehart  
Turner.wisehart@onpacepartners.com  
770.654.4334

Chris Cummings  
Chris.cummings@onpacepartners.com  
678.612.9958



# 730 N. Great SW Pkwy, Arlington, TX

## Floor Plan & Building Specs.



## Buildings Specs

Address:	730 N. Great SW Pkwy, Arlington, TX
Total SF:	± 18,323
Freezer SF:	± 1,500
Cooler SF:	± 12,150
Refrigerated Dock:	4 Dock High Doors
Office SF:	± 4,100
Clear Height:	14' (production) to 18' (storage)
Dock High Doors:	4
Acres:	1.03

## Other Features

- Previous user USDA/FDA inspected
- Floors drains
- Power / utility drops
- Process boilers & air compressors
- R & D Kitchen
- New cooling tower installed 2025