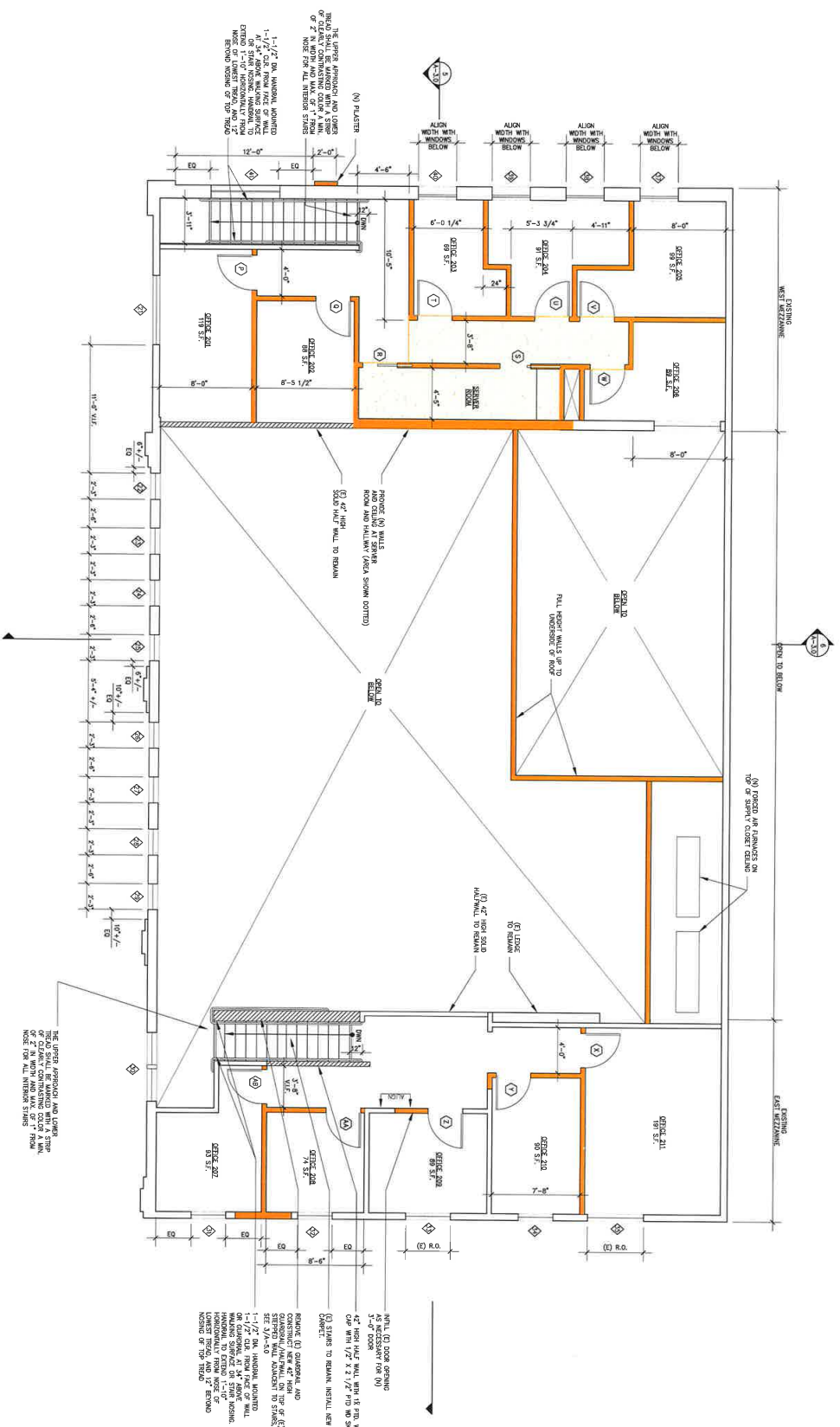


1 PROPOSED MEZZANINE PLAN



- 3'-0" GLASS WALL
- 4'-0" HIGH WALL
- 6'-0" HIGH WALL
- 10'-0" HIGH WALL
- 12'-0" HIGH WALL
- 14'-0" HIGH WALL
- 16'-0" HIGH WALL
- 18'-0" HIGH WALL
- 20'-0" HIGH WALL
- 22'-0" HIGH WALL
- 24'-0" HIGH WALL
- 26'-0" HIGH WALL
- 28'-0" HIGH WALL
- 30'-0" HIGH WALL
- 32'-0" HIGH WALL
- 34'-0" HIGH WALL
- 36'-0" HIGH WALL
- 38'-0" HIGH WALL
- 40'-0" HIGH WALL
- 42'-0" HIGH WALL
- 44'-0" HIGH WALL
- 46'-0" HIGH WALL
- 48'-0" HIGH WALL
- 50'-0" HIGH WALL
- 52'-0" HIGH WALL
- 54'-0" HIGH WALL
- 56'-0" HIGH WALL
- 58'-0" HIGH WALL
- 60'-0" HIGH WALL
- 62'-0" HIGH WALL
- 64'-0" HIGH WALL
- 66'-0" HIGH WALL
- 68'-0" HIGH WALL
- 70'-0" HIGH WALL
- 72'-0" HIGH WALL
- 74'-0" HIGH WALL
- 76'-0" HIGH WALL
- 78'-0" HIGH WALL
- 80'-0" HIGH WALL
- 82'-0" HIGH WALL
- 84'-0" HIGH WALL
- 86'-0" HIGH WALL
- 88'-0" HIGH WALL
- 90'-0" HIGH WALL
- 92'-0" HIGH WALL
- 94'-0" HIGH WALL
- 96'-0" HIGH WALL
- 98'-0" HIGH WALL
- 100'-0" HIGH WALL
- (E) WALL TO REMAIN

A - 2.1

Michelli & Reed Architects, LLP

M A R S A R C H I T E C T S
97 Linden Street, Oakland, CA 94607
Tel 510.663.2144 Fax 510.663.2147

NEW HARBINGER PUBLICATIONS BUILDING RENOVATION
5720 SHATTUCK AVENUE
OAKLAND, CA

CONSULTANTS
STRUCTURAL ENGINEERING
4401 TELEGRAPH AVENUE, SUITE 300
OAKLAND, CA 94612
P. 510.438.4400
F. 510.438.4401
WWW.MRSARCHITECTS.COM

1514#

PROPOSED MEZZANINE FLOOR PLAN

DATE: 09/13/10
SCALE: 1/8" = 1'-0"
DRAWN: LAM, SP